

Zojirushi Stainless Steel Vacuum Mug Comparison Chart

Zojirushi stainless mugs utilize high quality vacuum insulation to keep beverages hot or cold for as long as 6 hours. They are lightweight, durable and economical, so take your beverage with you today. Also see our Stainless Steel Vacuum Bottles and Cool Bottles.

Product Image											
Model No.		SM-HAE25	SM-BTE35	SM-BA35	SM-CTE35	SM-CA35	SM-DA35	SM-DA50	SM-DB35	SM-DB50	
Color		White, Pink, Black	Red, Blue, Black	Brown, Black, Green	Pearl Pink, Pearl Blue	Pearl White, Precious Brown	Clear Pink, White, Clear Black	Clear Blue, White, Clear Black	Brown, Pink	Blue, Black	
Product Specs	Capacity	8-1/2 oz. / 0.25 liter	11-3/4 oz. / 0.35 liter	11-3/4 oz. / 0.35 liter	11-3/4 oz. / 0.35 liter	11-3/4 oz. / 0.35 liter	11-3/4 oz. / 0.35 liter	17 oz. / 0.5 liter	11-3/4 oz. / 0.35 liter	17 oz. / 0.5 liter	
	Dimensions (D x H) in Inches	2-3/4 x 6-3/4	3 x 7-1/8	3 x 7-1/8	3 x 6-3/4	3 x 6-3/4	3 x 7-1/4	3 x 9	3 x 7-1/4	3 x 9	
	Weight	10 oz.	13 oz.	12 oz.	9 oz.	9 oz.	9 oz.	10 oz.	9 oz.	10 oz.	
	Heat Retention*	After 1 Hour	185°F	181°F	181°F	181°F	181°F	189°F	190°F	189°F	190°F
		After 6 Hours	142°F	140°F	140°F	140°F	140°F	156°F	165°F	156°F	165°F
Cold Retention**	After 6 Hours	50°F	50°F	50°F	50°F	50°F	48°F	48°F	48°F	48°F	
Features	D-mug	●	●	●							
	Removable Mouth Ring	●		●		●					
	Removable Tea Strainer		●		●						
	Tealeaves Holder on Lid		●	●	●	●					
	Flip Open Lid with Air Vent						●	●	●	●	
	Dimpled Surface						●	●			
	Diamond Press Finish								●	●	
Ease of Use	Nonstick Coated	●	●	●	●	●	●	●	●	●	
	Wide Opening	1-1/2 inches	2 inches	2 inches	2 inches	2 inches	1-1/2 inches	1-1/2 inches	1-1/2 inches	1-1/2 inches	
	Warranty	5 year warranty***									

*Rating is based on water at a starting temperature of 203°F (95°C) at a room temperature of 68°F (20°C) **Rating is based on water at a starting temperature of 40°F (4°C) at a room temperature of 68°F (20°C) ***Zojirushi America Corporation warrants only the thermal insulation of this product against defects for a period of five years from the date of original purchase

What is a stainless mug?

A stainless mug is a vacuum insulated mug that is designed to drink directly from the mug. Although similar to travel mugs, it offers better heat retention because of its tight fitting lid, and can be stored in a bag or purse without spilling.

How does it keep beverages hot?










The air between two thin layers of stainless steel that make up the body of the mug is removed to create a vacuum. Because there is no air, the temperature on the other side of the wall does not transfer over, keeping beverages hot or cold for hours.



The Story About Zojirushi:

Zojirushi (pronounced 'zoh-jee-ROO-shee') began in Japan in 1918 as a manufacturer of hand-blown vacuum bottles. Today, Zojirushi's product line extends to high-end small appliances such as rice cookers, breadmakers and coffee makers, high quality vacuum insulated products like vacuum bottles, lunch jars and carafes, and commercial restaurant and coffee equipment. The name Zojirushi means "Elephant brand" in Japanese.



Product Image																				
Model No.		SM-JA36		SM-JA48		SM-KHE36		SM-KHE48		SM-AFE35		SM-AFE50		SM-EAE20		SM-EAE25		SM-EAE30		
Color		Black, Silver, Red, Rosé		Black, Silver, Red, Rosé		Smoky Blue, Champagne Gold		Smoky Blue, Champagne Gold		Stainless, Clear Black, White, Clear Blue		Stainless, Clear Black, White, Clear Blue		Clear Blue, Clear Lime, Clear Pink		Blue, White, Milky Pink, Milky Vanilla Clear Blue, Clear Pink, Clear Lime		Clear Blue, Clear Lime, Clear Pink		
Product Specs	Capacity	12 oz. / 0.36 liter		16 oz. / 0.48 liter		12 oz. / 0.36 liter		16 oz. / 0.48 liter		12 oz. / 0.36 liter		17 oz. / 0.5 liter		6-3/4 oz. / 0.2 liter		8-1/2 oz. / 0.25 liter		10 oz. / 0.3 liter		
	Dimensions (D x H) in Inches	2-5/8 x 6-3/4		2-5/8 x 8-1/2		2-3/4 x 7-3/8		2-3/4 x 9-1/4		2-3/4 x 6-3/4		2-3/4 x 8-1/2		2-3/8 x 5-1/8		2-3/8 x 6-1/8		2-3/8 x 6-7/8		
	Weight	8 oz.		9 oz.		7 oz.		9 oz.		8 oz.		9 oz.		5 oz.		6 oz.		6 oz.		
	Heat Retention*	After 1 Hour	186°F		188°F		185°F		187°F		181°F		189°F		185°F		187°F		189°F	
		After 6 Hours	150°F		158°F		147°F		154°F		140°F		160°F		149°F		156°F		160°F	
Cold Retention**	After 6 Hours	50°F		48°F		48°F		48°F		50°F		48°F		50°F		48°F		48°F		
Features	Removable Mouth Ring	●		●										●		●		●		
	Stopper Disassembles	●		●		●		●												
	Tealeaves Holder on Lid									●		●								
Ease of Use	Nonstick Coated	●		●				●		●		●		●		●		●		
	SlickSteel™ Finish					●		●												
	Wide Opening	1-1/2 inches		1-1/2 inches		1-1/2 inches		1-1/2 inches		2 inches		2 inches		1 inch		1 inch		1 inch		
	Warranty	5 year warranty***																		

*Rating is based on water at a starting temperature of 203°F (95°C) at a room temperature of 68°F (20°C) **Rating is based on water at a starting temperature of 40°F (4°C) at a room temperature of 68°F (20°C) ***Zojirushi America Corporation warrants only the thermal insulation of this product against defects for a period of five years from the date of original purchase

~Stainless Mug Glossary~

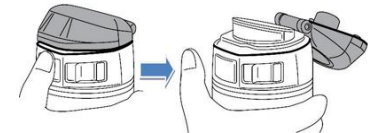
D-mug: Allows you to create and print a custom wrap from the D-mug Studio website.



Removable Mouth Ring: Plastic mouth ring around the opening of the mug for a more comfortable feel.



Flip Open Lid: Lid flips open at the touch of a button.



Removable Tea Strainer: Allows you to brew fresh tea on-the-go. The tea strainer comes with a handle for easy removal, and conveniently sits on the lid when not in use.



Tealeaves Holder on Lid: Secret compartment on the lid for storing tealeaves and teabags.



Wide Opening: Wide opening accommodates large ice cubes and makes it easier to clean.

SlickSteel™ Finish: 18/8 stainless steel interior with SlickSteel™ finish resists corrosion and repels stains.

Nonstick Coating: The interior nonstick coating makes the mug easy-to-clean.

