

Zojirushi Electric Water Boiler & Warmer Comparison Chart

A Zojirushi electric water boiler boils water and keeps it hot at a set temperature for as long as it's plugged in.



		Micom							
		VE Hybrid		Non-VE					
Product Image									
Model No.		CV-DYC40	CV-DSC40	CD-LCC30/40/50	CD-WBC30/40	CD-JSC22/30	CD-FAC22	CW-PZC22/30	
Capacity		135 oz.	135 oz.	101 oz., 135 oz. or 169 oz.	101 oz. or 135 oz.	74 oz. or 101 oz.	74 oz.	74 oz. or 101 oz.	
Color		Stainless Steel	Stainless Steel	White (169 oz. size also in Black)	Champagne Gold	Marguerite (101 oz. size also in Herb Cacao)	Silver	White Ballerina (74 oz. size also in White)	
Warming Functions	Keep Warm Temperatures	140°F			●	●	●		
		175°F	●	●	●	●			
		195°F	●	●	●	●	●		
		208°F	●	●	●	●	●	●	
		Vacuum (Non-Electric)	●	●				●	
Reboil Mode		●	●	●	●	●	●	●	
Ease of Use	Dispense Mechanism	One-Touch Electric	●	●	●	●	●		
		Battery Operated Cordless Dispensing	●						
		Push Button							●
	Water Level Gauge	Panorama Window® Water Level Gauge	●	●	●				
		Wide Window Gauge				●			
		Regular Water Gauge					●	●	●
		Red Air-Filled Ball						●	
	Timer		6-10 hours	6-10 hours	7 hours	6-10 hours	6-10 hours		
	Nonstick Interior		●	●	●	●	●	●	●
	LCD Display		●	●	●	●	●	●	
	Swivel Base		●	●	●	●	●	●	●
	Café Drip Dispensing Mode		●	●		●			
	Magnetic Detachable Power Cord		●	●	●	●	●	●	●
Detachable Lid		●	●	●	●	●	●	●	
Melody Signal		●	●		●				
Safety Features	Dechlorinate Mode		●	●	●	●	●	●	
	Descaling Mode		●	●	●	●	●	●	
	Safety Auto Shut-Off		●	●	●	●	●	●	
	Steam-Save Function		●	●	●	●	●		
	Unlocking Feature	One-Touch Button	●	●	●	●	●	●	
Lever Lock								●	

What are the multiple temperatures for?

Temperature	Use
208°F / 212°F	Brew black, herbal and puh-erh tea; prepare coffee and instant noodles
195°F	Brew oolong tea; reduces energy consumption by 27-28% compared to 208°F keep warm
175°F	Brew green tea (bancha, hojicha, genmaicha) and white tea
140°F	Brew high quality green tea (gyokuro)

The Story About Zojirushi:

Zojirushi (pronounced 'zoh-jee-ROO-shee') began in Japan in 1918 as a manufacturer of hand-blown vacuum bottles. Today, Zojirushi's product line extends to high-end small appliances such as rice cookers, breadmakers and coffee makers, high quality vacuum insulated products like vacuum bottles, lunch jars and carafes, and commercial restaurant and coffee equipment. Recently, Zojirushi has enhanced the focus on design and how appliances fit into everyday lives with the introduction of their ZUTTO® Collection and RIZO®. The name Zojirushi means "Elephant brand" in Japanese.



All Zojirushi Electric Water Boilers Have:

Micom Technology:

Micro computerized technology that keeps water at the selected temperature for as long as it is plugged in.

Safety Auto Shut-Off:

Automatically turns off the unit to prevent overheating when there is no water left inside or when the lid is left open.

Unlocking Feature:

Locks the unit from dispensing unless the unlock button is pressed or the locking lever is set to unlock. Prevents accidental dispensing of hot water.

Unique Dispense Mechanism:

Unique dispensing method works like an *air pot*® and does not require lifting or pouring to dispense hot water. One-touch electric dispense models allow you to dispense hot water simply by pushing a button.



Reboil Mode:

Reboils the water to 212°F.

Swivel Base:

Conveniently rotates.

Dechlorinate Mode:

Reduces chlorine and musty odors from tap water by extending the boiling time.

Descaling Mode:

Keeps the pot sparkling clean by simply using Zojirushi Activated Descaling Cleaner (ADC-05) or citric acid.

Nonstick Interior:

Makes it easy to clean.



~Electric Water Boiler Glossary~

Timer:

Have hot water ready within a specified time. Saves electricity by staying off while not needed.

LCD Display:

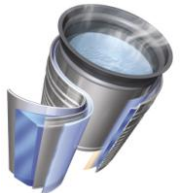
Displays actual water temperature at all times.

Melody Signal:

Chimes a tune to alert when boiling completes or the timer is set.

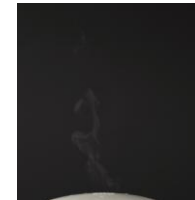
Vacuum Insulation or VE Hybrid:

Turns off the heater and keeps water hot utilizing its vacuum insulation. Also called VE (vacuum-electric) technology.

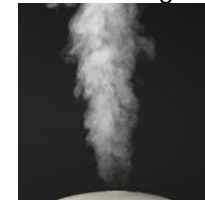


Steam-Save Function:

Decreases the amount of steam that comes out of the steam vent to reduce furniture damage.



With Steam-Save



Without Steam-Save

Café Drip Dispensing Mode:

Decreases the amount of water dispensed to 60% of the normal setting, making it suitable for brewing café drip coffee.

