



COMMERCIAL WATER BOILER & WARMER OPERATING INSTRUCTIONS

CD-LTC50

INDEX

IMPORTANT SAFEGUARDS.....	2
SPECIFICATIONS.....	5
PARTS NAMES AND FUNCTIONS.....	6
BOIL MODE.....	8
DISPENSE HOT WATER.....	10
DISPOSE WATER.....	10
AUTOMATIC SHUT-OFF FUNCTION / REBOIL MODE.....	11
208°F KEEP WARM MODE / 175°F KEEP WARM MODE...	12
7H TIMER FUNCTION.....	13
QUICK TEMP MODE.....	14
CLEANING AND MAINTENANCE.....	15
● HOW TO REPLACE THE INNER LID GASKET.....	15
HOW TO PERFORM CITRIC ACID CLEANING.....	16
REPLACEMENT PARTS.....	16
Q&A ON PRODUCT USE.....	17
TROUBLESHOOTING GUIDE.....	17

IMPORTANT SAFEGUARDS

Basic safety precautions should always be followed when using electrical appliances, including the following:

1. Read all instructions thoroughly.
2. Avoid touching hot surfaces and do not close or clog the steam vent opening under any circumstances. The handles and knobs are provided for your safety and protection.
3. To safeguard against fire, electric shock and possible injury, keep the power cord, plugs and the appliance away from water or other liquids.
4. Close supervision is recommended when any appliance is used by or near children.
5. Unplug from outlet when not in use and before cleaning. Allow the appliance to cool before adding or removing parts, and before cleaning the appliance.
6. Do not use or operate any appliance with a damaged cord or plug. If the appliance malfunctions or has been damaged in any manner, unplug the appliance and return it to the nearest authorized service facility or dealer for examination, repair or adjustment.
7. The use of accessories or attachments not recommended by the appliance manufacturer may result in fire, electric shock or other injury to persons.
8. Do not use outdoors.
9. Keep the power cord away from hot surfaces and do not let the cord hang over the edge of tables or counters.
10. Do not place on or near a heated surface such as a gas or electric stove, or in a heated oven.
11. Always use extreme caution when moving an appliance containing hot liquids.
12. The plug to the appliance should be attached first before plugging the cord into a wall outlet.
13. Do not use the appliance for other than intended or specified purposes.
14. To protect against electrical hazard, unplug the cord before cleaning.
15. Scalding may occur if the lid is removed during boiling.
16. For risk of fire and electric shock, replace only with manufacturer's cord set.

SAVE THESE INSTRUCTIONS

THIS APPLIANCE IS FOR COMMERCIAL USE ONLY.

- A. A short detachable power-supply cord has been provided for your safety. To reduce risks from entanglement or tripping, a longer cord is not recommended.
- B. Extension cords should only be used if care is exercised.
- C. If using an extension cord: (1) the marked electrical rating of the detachable power-supply cord or extension cord should be at least as high as the electrical rating of the appliance; (2) if the appliance is of the grounded type, the extension cord should have a ground-type 3-pronged plug; and (3) the longer cord should not drape over the countertop or tabletop where it can be pulled on by children or tripped over.

Before use

These WARNINGS and CAUTIONS are intended to protect you and others from personal injury and household damage. To ensure safe operation, please follow carefully.

WARNINGS

Do not modify the product. Only a repair technician may disassemble or repair this unit.

- Attempting to do so may cause fire, electric shock or injury. Make any repair inquiries to Zojirushi Customer Service.

Do not immerse the product in water or splash it with water, and do not put it on a wet surface such as a sink.

- Doing so may cause short circuit or electric shock.

Do not allow liquid to come into contact with the Receptacle or Power Cord.

- Doing so may cause short circuit or electric shock.

Do not plug or unplug the Power Cord if your hands are wet.

- Doing so may cause electric shock or injury.

Do not touch the Steam Vent or bring your hands or face near the Steam Vent.

- Doing so may cause burns or scalding. Take special precautions with children and infants.

Do not cover the Steam Vent with anything such as a dishcloth.

- Hot water may spill out, resulting in scalds. It may also cause deformation or discoloration of the Upper Lid or breakdown of the product.

Do not allow children to use the product unsupervised. Keep it out of the reach of infants.

- Children are at risk of burns, electric shock or injury.

Do not fill over the Maximum Water Level Line.

- Overfilling may cause hot water to spill out, resulting in scalds.

Always remove the Upper Lid before disposing hot water.

- The Upper Lid may fall off and cause hot water to splash, resulting in scalds.

Do not tilt or shake the product or carry in your arms. Do not move it or drain hot water by holding the Upper Lid.

- Doing so may result in scalding by hot water spilling out from the Spout or Steam Vent, even if the Automatic Dispense Lock is on. Always use the handle when carrying.

Do not tilt the product or tip it over.

- Hot water may spill from the Spout or Steam Vent, even if the Automatic Dispense Lock is on.

Do not slam the Upper Lid when closing.

- Hot water may dispense or spill out, resulting in scalds.

Do not use the product if the Power Plug or Power Cord is damaged or if the Power Plug is loosely inserted into the electrical outlet.

- Doing so may cause electric shock, short circuit or fire.

Close the Upper Lid securely.

- Hot water may spill out when the product is overturned, resulting in scalds.

Do not remove the Upper Lid while boiling.

Do not damage the Power Cord. Do not bend, pull, twist, fold, or attempt to modify the Power Cord. Do not place it on or near high temperature surfaces or appliances, under heavy items or between objects.

- A damaged Power Cord can cause fire or electric shock.

Do not use the product as a cooler or place ice inside of it.

- Doing so may cause condensation, resulting in electric shock or breakdown of the product.

Do not allow the end of the Appliance Plug to become soiled with dust or come into contact with any metal objects.

- Doing so may cause electric shock, short circuit or fire.

Do not allow infants or children to put the Appliance Plug in their mouth.

- Doing so may cause electric shock or injury. Take special precautions with children and infants.

Insert the Power Plug completely and securely into the electrical outlet.

- A loosely inserted Power Plug may cause electric shock, short circuit, smoke or fire.

Use only an electrical outlet rated at 15 amperes minimum, and do not plug other devices into the same outlet.

- Plugging other devices into the same outlet may cause the electrical outlet to overheat, resulting in fire.

If the blades or surface of the Power Plug become soiled, wipe them clean.

- A dirty Power Plug may cause fire.

Do not use a power source other than 120V AC.

- Use of any other power supply voltage may cause fire or electric shock.

Do not boil anything other than water.

- Attempting to boil, cook, or heat up the following items may cause bubbling or boiling over, which may cause scalding. Doing so may also cause clogging of the water route, corrosion of the Inner Container, or peeling of the Nonstick Coating.

- Milk, sake, soup, charcoal, tea bags or tea leaves.
- Instant food.
- Food and sauce pouches or foods in plastic bags.

Replace the Inner Lid Gasket if it becomes discolored white.

- Hot water may spill out when the product is tilted or tipped over accidentally, and may cause scalding.

●The illustrations used in this Operating Instructions may vary from the actual product you have purchased.

IMPORTANT SAFEGUARDS (cont.)

This product is not intended for use by persons (including children) with reduced physical, sensory or mental capabilities, or lack of experience and knowledge, unless they have been given supervision or instruction concerning use of the product by a person responsible for their safety. Children should be supervised to ensure that they do not play with the product.

Stop using immediately if you notice any of the following symptoms indicating a malfunction or breakdown.

- Continued use of the product may cause smoke, fire, electric shocks or injury.
- The Power Plug or Power Cord has become very hot.
- The Power Cord is damaged or the electricity turns on and off when touched.
- The Body is deformed or unusually hot.
- Smoke is arising from the product or there is a burning smell.
- Some parts of the product is cracked, loose or unstable.
- The product emits steam for at least 10 minutes continuously and does not turn to Keep Warm mode.

If any of the above occurs, unplug the product immediately and return to the store where you purchased it for check-ups and/or repairs.

CAUTIONS

Always use caution when opening the Upper Lid and avoid skin contact with steam.

- Loose water or steam may escape upon opening the Upper Lid and cause scalds.

Do not touch hot surfaces during or for a short period of time after use.

- Touching hot surfaces may cause burns. Be especially careful with metal parts such as the Inner Lid and the Inner Container.

Please allow the product to cool down before cleaning.

- Touching hot surfaces may cause burns.

Do not use the product near walls, furniture or beneath shelving.

- Steam or heat may damage, discolor or deform walls, furniture or shelving.

Do not swivel or move the product while dispensing water.

- Hot water may splash out, resulting in scalds.

Do not place or use the product on unstable surfaces or on surfaces that are vulnerable to heat.

- Doing so may cause fire.

Do not attempt to dispense hot water while it is boiling.

- Hot water can spurt out, resulting in scalds.

Do not use other Power Cords than the one provided.

Do not use the Power Cord for other appliances.

Do not use the Power Cord for overseas models.

- Doing so may cause malfunction or fire.

Do not use the product near a heat source or on top of induction heating cookers.

- Doing so may cause fire, breakdown or damage of the product.

Unplug the Power Plug from the outlet when the product is not in use.

- Leaving the Power Plug in an outlet may cause the insulation to become damaged, resulting in electric shock, short circuit or fire, or result in injuries or scalds.

Do not touch the Lid Lock when carrying the product.

- Doing so may cause the Upper Lid to open, resulting in injuries or scalds.

Always unplug the product by holding the Power Plug, not by pulling the Power Cord.

- Pulling the Power Cord to unplug the product may cause electric shock, short circuit or fire.

If the Power Cord is damaged, it must be replaced by an appropriate cord or assembly made available by the manufacturer or its service agent.

IMPORTANT

Do not operate the product when it is empty.

- Doing so may burn or damage the product.

Avoid rough handling, dropping or bumping the product.

- Doing so may cause damage or cease operation of the product.

Avoid letting steam make contact with cabinets and walls when using near or under a kitchen shelf.

- Doing so may cause discoloration or deformation.

Allow the product to dry completely when storing the product in an area where it may freeze for a long period of time.

- If water left inside freeze, it may cause breakdown or malfunction.

Do not drag the product over any surface while attempting to move.

- Doing so may cause damage to surfaces such as countertops.

Avoid using the product near a radio, TV, computer, etc.

- The product may cause interference with certain electronics.

Do not allow hot water to come into contact with the Control Panel or the Water Level Gauge.

- Doing so may cause breakdown of the product.

Do not use the product where its steam may come into contact with other electrical appliances.

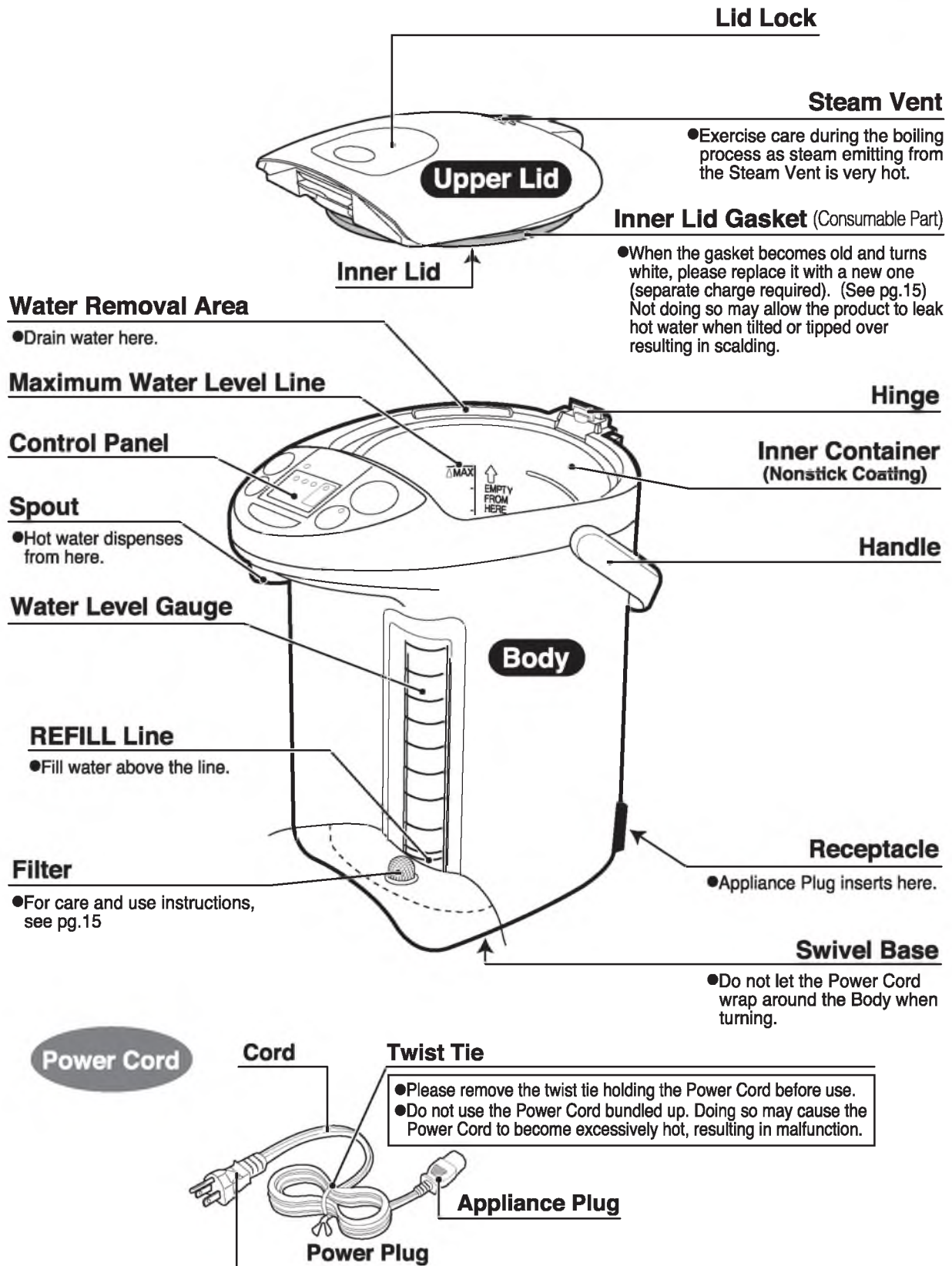
- The steam may cause fire, malfunction, discoloration or deformation to other electrical appliances.

SPECIFICATIONS

Model No.		CD-LTC50
Capacity		169 oz. (5.0 liters / 5.29 qt.)
Rating		AC 120V 60Hz
Electric Consumption		800W
Average Power Consumption during Keep Warm	208°F (98°C)	Approx. 58W
	195°F (90°C)	Approx. 49W
	175°F (80°C)	Approx. 39W
Length of the Power Cord		2' 11" (0.9 m)
External Dimensions	(approx. inches)	9- $\frac{1}{8}$ (W) x 11- $\frac{7}{8}$ (D) x 13- $\frac{1}{8}$ (H)
	(approx. cm)	23 (W) x 30 (D) x 33 (H)
Weight (including the Power Cord)		Approx. 6 lbs. (2.6 kg)

- The average Keep Warm electric power consumption is for one hour, provided that the Inner Container is full and the room temperature is approximately 73°F (23°C).
- The height refers to the product when the handle is down.
- In high altitudes or severely cold areas, the product may not perform as specified. Avoid using the product in such areas or in other extreme conditions.

PARTS NAMES AND FUNCTIONS



Control Panel

● Press buttons down firmly.

BOIL/QUICK TEMP light

When the light turns on: the Boil or Reboil mode is activated.
When the light is blinking: the Quick Temp mode is activated.

TIMER light

KEEP WARM light

DISPENSE button

Press to dispense hot water. (see pg.10)

REBOIL/QUICK TEMP button

Starts the Reboil mode. (see pg.11)

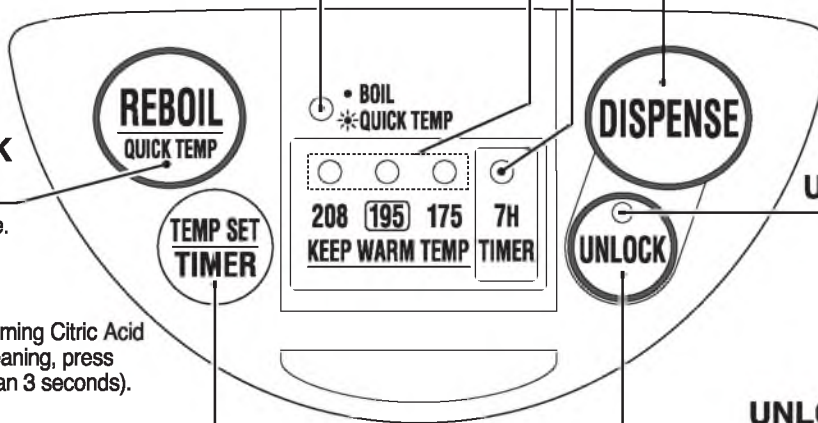
Sets the Quick Temp mode. (see pg. 14)

Also used when performing Citric Acid Cleaning (to initiate cleaning, press this button for more than 3 seconds). (see pg.16)

TEMP SET/TIMER button

Sets the Keep Warm temperature. (see pg.12)

Sets the Timer. (see pg.13)



UNLOCK light

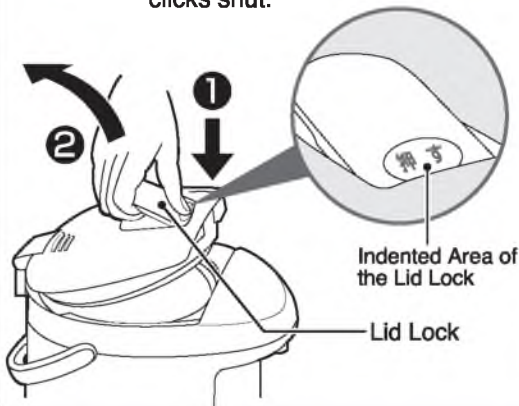
UNLOCK button

This button must be pressed to dispense hot water. (see pg.10)

How to Open/Close the Upper Lid

- To Open**
- 1 Press the indented area of the Lid Lock with thumb.
 - 2 Pull the Lid Lock up with fingers to open the Upper Lid.

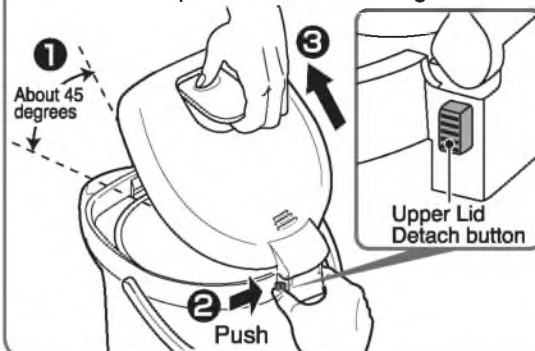
To Close Depress the Upper Lid until it clicks shut.



How to Detach/Attach the Upper Lid

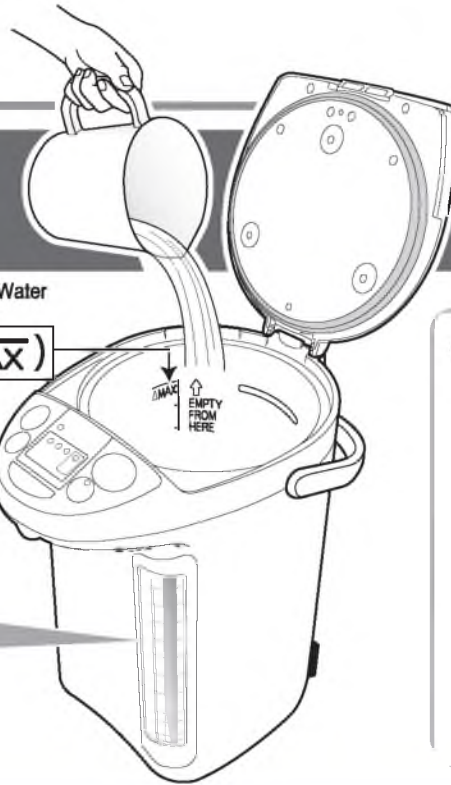
- To Detach**
- 1 Open the Upper Lid to about a 45-degree angle.
 - 2 Push the Upper Lid Detach button.
 - 3 Pull the Upper Lid forward and up at an angle.

To Attach Push the Upper Lid back into place at the same angle.

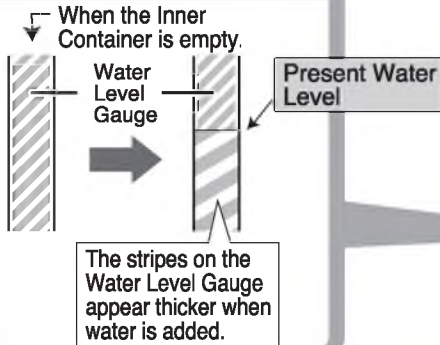


BOIL MODE

1 Open the Upper Lid and fill the Inner Container with water using a pitcher or other container.



To monitor the amount of water you are filling, look at the thickness of the stripes on the Water Level Gauge.



NOTE

● Do not fill the Inner Container directly from a water faucet or place the product on a wet surface such as a sink. (Exposing the heating element directly to water may cause malfunction.)



2 Close the Upper Lid and connect the Power Cord.

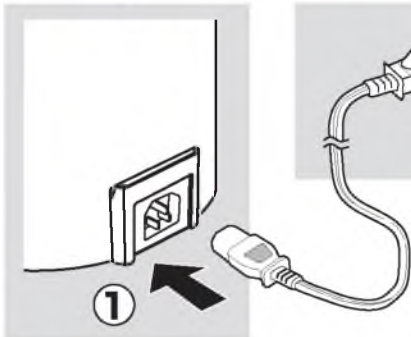


Close the Upper Lid securely.

(To ensure safe operation while boiling and to prevent scalds if the product is overturned.)

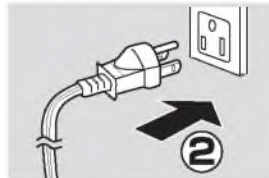
It automatically starts the boiling process.

The BOIL/QUICK TEMP light turns on and the KEEP WARM light begins to blink.



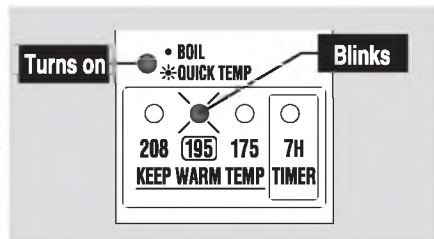
Be sure to insert the Power Cord securely.

(Otherwise, may cause electric shock, short circuit, smoke or fire.)



NOTE

● Do not allow the end of the Appliance Plug to become soiled with dust or come into contact with any metal objects.



Temperature Conversion Guide

Fahrenheit (°F)	Celsius (°C)
195	90
73	23

The first time you use the product you may notice the smell of plastic. This is normal and will gradually fade away.

- Avoid splashing water on the Body or Control Panel. (May cause malfunction.)
- Do not fill over the Maximum Water Level Line. (Hot water may overflow from the Steam Vent.)
- Do not fill the Inner Container with hot water. (The Automatic Shut-Off function may be activated.) (see pg.11)
- Do not fill the Inner Container with any liquid other than water.
- Do not use water additives such as charcoal for water purification or mineral additives. (Small particles may get clogged inside of the product.)

● At your initial use or when using the product after a long period of storage:

Attach the Filter, fill the Inner Container with water to the MAX line and boil as directed. Once it reaches a boil, dispense about 34 oz. (1 liter) of water and dispose the remaining water. Fill with fresh water.

● When using mineral or Alkalized Ionic water:

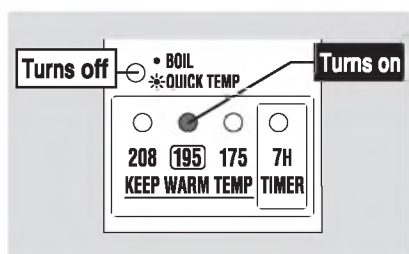
When mineral or Alkalized Ionic water is used, a floating residue may develop or a milky white substance may form on the surface of the Inner Container. This is due to the ingredients in the water and is harmless to your health. Frequent cleaning is recommended.

When boiling has completed, it automatically switches to 195°F Keep Warm mode.

The BOIL/QUICK TEMP light turns off and the KEEP WARM light turns on.

How to set the Keep Warm mode: see pg.12

How to set the Quick Temp mode: see pg.14



Time required to boil water:

Approx. 40 minutes*

(At a room temperature of 73°F with the Inner Container filled to the Maximum Water Level Line with water temperature at 73°F.)

* Includes approx. 3 minutes to Dechlorinate.

Length of time until the water temperature reaches about 195°F:

Approx. 40 minutes

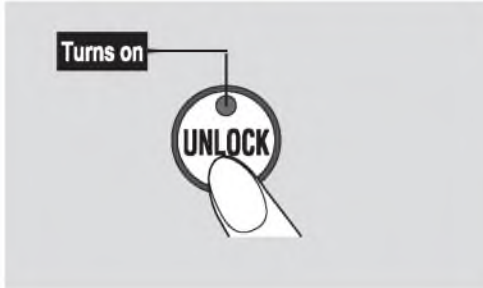
(At a room temperature of 73°F with the Inner Container filled to the Maximum Water Level Line with water.)

NOTE

- Add water when the water level is low during the Keep Warm mode. (The product automatically begins heating the water.) If the water level is still not high enough, it will not automatically switch to Boil. In this case, press the REBOIL/QUICK TEMP button to manually start the process. (see pg.11)
- Please follow the instructions below to reduce the risk of scalding:
 - Do not cover the Steam Vent with a cloth.
 - Be careful of steam coming out from the Steam Vent.
 - Do not open the Upper Lid while the BOIL/QUICK TEMP light is on or blinking.
 - Do not dispense hot water while it is boiling.
- If you wish to shorten the time, add less water to the Inner Container.

DISPENSE HOT WATER

1 Press the **UNLOCK** button.

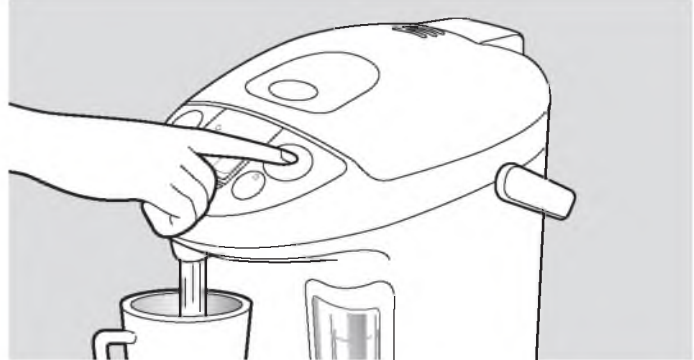


The **UNLOCK** light turns on and hot water can be dispensed.

NOTE

- Do not unlock and press the **DISPENSE** button if the Inner Container is empty.

2 Press the **DISPENSE** button to dispense hot water.

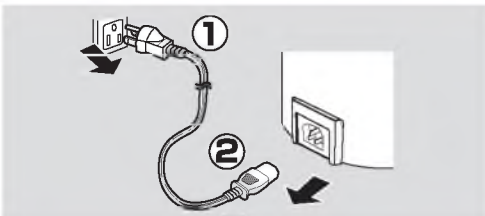


Do not swivel the product while dispensing water.

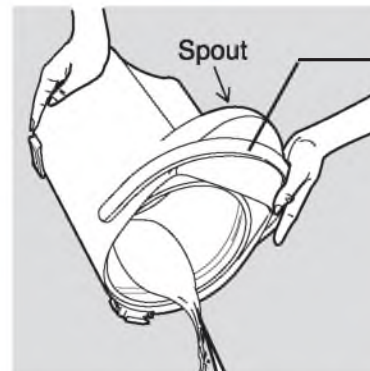
- Initially upon boiling or if it has been a while after dispensing, the water may not be very hot. Please discard the first cup (of the hot water).
- Do not attempt to dispense hot water while boiling.
- Water may not dispense smoothly immediately after boiling.
- Be careful as the Body heats up during the Boil and Keep Warm modes.

DISPOSE WATER

1 Unplug the Power Cord and detach the Upper Lid.



2 Hold the product with both hands and dispose water where indicated "EMPTY FROM HERE" on the wall of the Inner Container.



Hold the Handle securely.

When disposing hot water:

- Take precaution with the hot water and steam. You may scald yourself.
- Take precaution as hot water may drip from the Spout, causing scalds.

Water Removal Area
EMPTY FROM HERE



10 seconds after dispensing, the UNLOCK light turns off and the Automatic Dispense Lock is activated.

Automatic Dispense Lock

A safety function to prevent hot water from dispensing if the DISPENSE button is accidentally pressed.

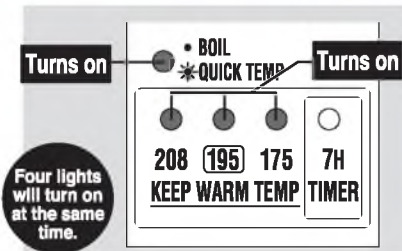
- Even if no water is dispensed, the Automatic Dispense Lock will be activated after about 10 seconds.

Do not tilt or shake the product after dispensing. Hot water may drip from the Spout, causing scalds.

NOTE

- Do not plug or unplug the Power Plug or Appliance Plug with wet hands. (May cause electric shock or injury.)
- Do not dispose hot water with the Upper Lid in place. (The Upper Lid may come off, spilling hot water and causing scalds.)
- Do not allow water to splash on the Control Panel, Hinge, Handle or Receptacle. (Could cause scalding or breakdown.)
- Please do not lose the Filter while disposing water.
- Dispose the water at least once a day. (Leaving water in the Inner Container can cause unwanted odor or scale build-up.)

Automatic Shut-Off function



- Be careful not to repeat the boiling process without filling the Inner Container with water, as the Nonstick Coating may discolor and peel.

The Automatic Shut-Off function activates to shut down power to the heater in order to prevent damage from overheating. Four lights will turn on to alert you that the Automatic Shut-Off has been activated. The following conditions may cause activation:

- When plugged in without filling the Inner Container with water.
- When the water level is lower than the REFILL Line and boiling has been attempted.
- When the Inner Container is empty or the Upper Lid is left open for adding water.
- When pouring in hot water immediately after plugging in the unit.

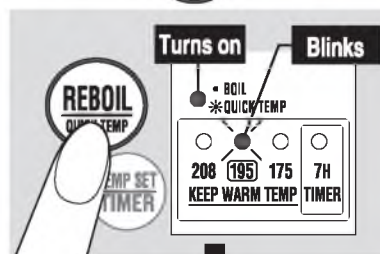
Remedy

Unplug the product. Allow the Inner Container to cool. Fill the Inner Container with water and plug back in.

Reboil Mode

This function is used when reboiling water in the Keep Warm mode.

Press the **REBOIL QUICK TEMP** button.



The BOIL/QUICK TEMP light turns on when the boiling process begins.

Time required to finish reboiling

208°F Keep Warm Mode
Approx. 2~3 minutes
195°F Keep Warm Mode
Approx. 4~6 minutes

(At a room temperature of 73°F (23°C) with the Inner Container filled to the Maximum Water Level Line.)

When the Reboil process is completed, the product switches to Keep Warm mode.

- Pressing the REBOIL/QUICK TEMP button twice activates the Quick Temp mode. (see pg. 14) Pressing the REBOIL/QUICK TEMP button again switches it back to Reboil mode.
- Do not attempt to dispense hot water while reboiling.
- Water may not dispense smoothly for a short period of time after reboiling.

NOTE

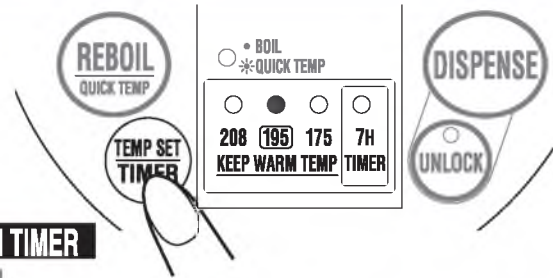
- Make sure the water level is above the REFILL Line before pressing the REBOIL/QUICK TEMP button.

208°F KEEP WARM MODE / 175°F KEEP WARM MODE /

Press the  button to change the settings.

Each press of the button changes the position of the lights turned on.

195 → 208 → 195 → 175 → 208 ·7H TIMER → 195 ·7H TIMER
(Default) ↑

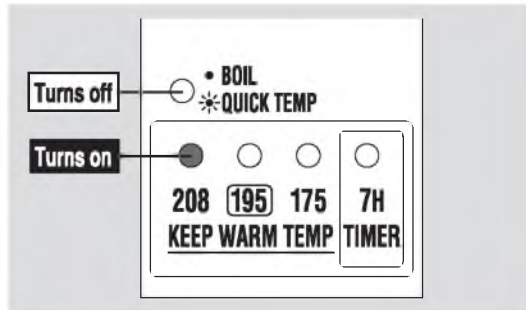


For making coffee, tea or instant noodles

208°F Keep Warm Mode

208°F (98°C) is ideal for making coffee, tea or instant noodles.

Select the "208".



When the boiling process has completed, the BOIL/QUICK TEMP light turns off and the KEEP WARM light turns on.

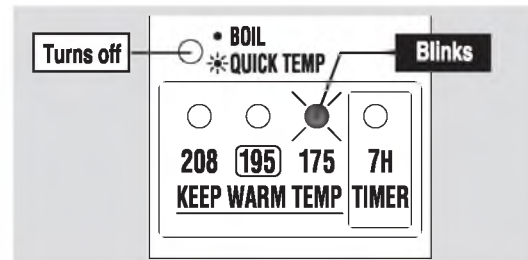
- Depending on the altitude where the product is used, the Keep Warm mode may be set at 205°F-207°F, in order to prevent continuous boiling.

For making Japanese (green) tea

175°F Keep Warm Mode

175°F (80°C) is ideal for making Japanese (green) tea.

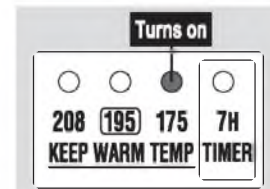
Select the "175".



When the boiling process has completed, the BOIL/QUICK TEMP light turns off and the KEEP WARM light begins to blink.
(If initiated during Keep Warm mode, the light will blink 2 seconds after the selection.)



When the water temperature reaches 175°F, the KEEP WARM light stops blinking and remains on.



(If you select the Quick Temp mode, the KEEP WARM light will turn on without blinking. (see pg.14))

- Length of time for the water temperature to reach 175°F after boiling:

Approx. 1 hour and 40 minutes

(At a room temperature of 73°F with the Inner Container filled to the Maximum Water Level Line.)

- The length of time for the water temperature to reach 175°F will vary depending on the amount of water and room temperature.

Temperature Conversion Guide

Fahrenheit (°F)	Celsius (°C)
208	98
207	97
205	96
195	90
175	80
73	23

7H TIMER FUNCTION

- You can change the temperature setting during Keep Warm mode.
(It may start reboiling depending on the water temperature and the selected setting.)
- You cannot select 208°F Keep Warm mode while Quick Temp mode is activated. (see pg.14)

If the Power Cord is detached:

- Reinsert the Power Cord if it is accidentally detached.
- If the cord is detached for more than a few minutes and reinserted, the product returns to the 195°F Keep Warm mode and may start reboiling automatically.

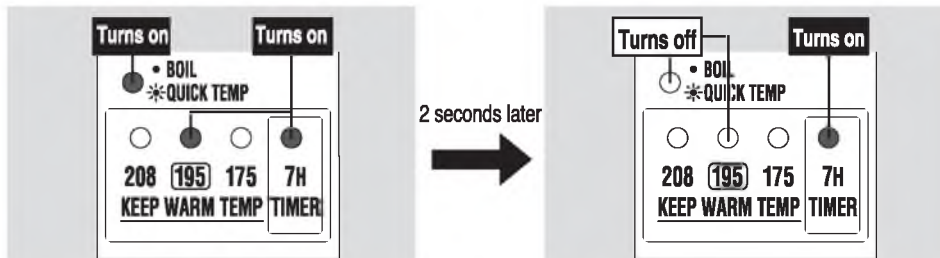
For saving electricity by keeping the heater turned off

7H Timer Function

This function helps save energy by shutting off electricity to the product when not in use, and completes boiling in 7 hours. The heater is turned off until ready to begin boiling.

Press the  button to set the 7H Timer function.

(208 · 7H TIMER or 195 · 7H TIMER)



The TIMER light, the BOIL/QUICK TEMP light and the KEEP WARM light turn on at the same time for 2 seconds.

The BOIL/QUICK TEMP light and the KEEP WARM light turn off, and the 7H Timer function is activated.

The 7H Timer function is activated.

The boiling process will complete in 7 hours.

The BOIL/QUICK TEMP light turns off and the product switches to Keep Warm mode. (see pg.9, 12)

- Boiling may complete earlier, depending on room temperature, water temperature and amount of water.

When using the Quick Temp mode with the 7H Timer function:

- Set the 7H Timer function after selecting the Quick Temp mode. (see pg.14)

NOTE

- You cannot activate the 7H Timer function along with 175°F Keep Warm mode.
- If the Power Cord is detached, the 7H Timer function will be cancelled and must be reset.
- To cancel the Timer, press the TEMP SET/TIMER button several times or press the REBOIL/QUICK TEMP button once.

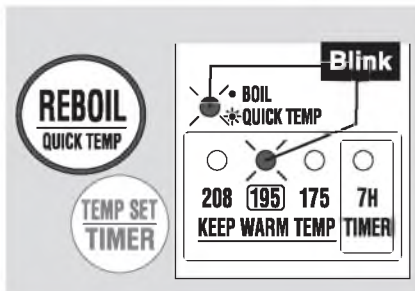
QUICK TEMP MODE

Quick Temp Mode

This function heats the water to the selected Keep Warm temperature without reaching a boil. The water will reach the selected Keep Warm temperature quicker than the regular Boil mode. Other benefits include reduced steam and reduced energy use. Use this mode when dechlorination is not necessary, such as when using bottled or purified water.

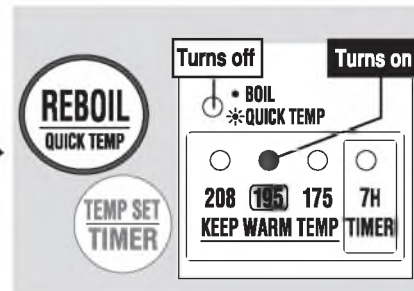
While the water is heating,
press .

The BOIL/QUICK TEMP light and KEEP WARM light begin to blink.



After reaching the selected temperature, it will automatically switch to Keep Warm.

The BOIL/QUICK TEMP light turns off and the KEEP WARM light turns on.



- The Quick Temp mode may be cancelled if the product is left unplugged for several minutes.
- Pressing the REBOIL/QUICK TEMP button again during Quick Temp mode returns it to the regular Boil mode.

- You cannot activate Quick Temp mode while the boiler is set at 208°F Keep Warm mode.
- You also cannot select 208°F Keep Warm mode while Quick Temp mode is activated.
- There may be a lingering chlorine smell if tap water is used while Quick Temp mode is activated. If this is an issue, use the regular Boil mode instead.
- When using the 7H Timer function, set the 7H Timer function after selecting the Quick Temp mode.
- Depending on the amount of water and room temperature the actual water temperature after heating may differ from that shown on the display.
- Depending on the amount of water, room temperature, and atmospheric pressure, some steam may be produced.

Note

- Water does not reach a boil under Quick Temp mode, and should not be used to prepare baby formula.
- Although the water will not reach a boil when Quick Temp mode is activated, the Steam Vent will become hot. Please do not touch it.

CLEANING AND MAINTENANCE

Always unplug the Power Cord, dispose all water, and allow to cool completely before cleaning.

NOTE

- Do not attempt to dry the product by turning it upside down when the bottom is wet. (Water may get inside the body and cause it to break or rust.)
- Do not use a thinner, abrasive cleansers or brushes (nylon/metal), eraser pads, bleach, detergent or anything that may damage the surface of the product. (May cause damage to the Nonstick Coating.)
- Do not use a dishwasher or dish dryer for cleaning or drying. (May cause the plastic parts to deform.)
- Before storing the product for a longer period of time, dry it completely and pack in a plastic bag to prevent odors from being absorbed.

Inner Lid

Wipe with a wet soft sponge.

Inner Container

Perform the Citric Acid Cleaning (see pg.16) periodically.

Especially when...

- Red rust-like spotting is visible on the Inner Container.
- Milky white or gray discoloration and/or filmy objects are found in the water.
- Boiling is louder than usual.
- Hot water has an odor.

(The condition of the Inner Container will vary depending on the water quality and frequency of use.)

Filter

Remove the Filter from the Inner Container and wash with a soft brush.

Pull the Filter up to release, and press down firmly to attach.

If you find it difficult to clean the Filter, replace it with a new one. (see pg.16)



- Never use the product without installing the Filter. (The Filter prevents foreign objects from entering the Electric Pump and obstructing the flow of hot water.)

Body/Upper Lid

Wipe clean with a damp well-wrung soft cloth.

- Do not wash any part of the Body or Control Panel with water. (May cause malfunction or rust.)



Power Cord

Wipe clean with a dry soft cloth.

HOW TO REPLACE THE INNER LID GASKET

The Inner Lid Gasket may need to be replaced due to time and wear. Check it about once a year.

Wipe new Inner Lid Gaskets with a wet soft sponge before attaching to the Inner Lid.

To remove the Inner Lid Gasket

- Loosen the 3 screws. ● Do not lose the screws.
- Remove the Inner Lid Gasket placed on the Inner Lid and Middle Plate.
 - Do not touch the Tube set on the Middle Plate.

After removing the Inner Lid, check the plastic part of the Upper Lid for abnormalities.

→ If this part is discolored or if it feels rough to the touch, replace it (there will be a charge for this).

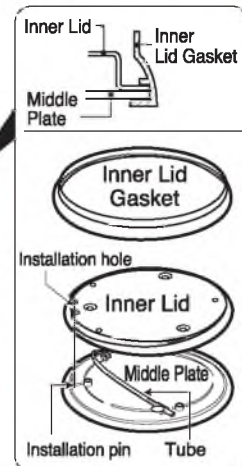
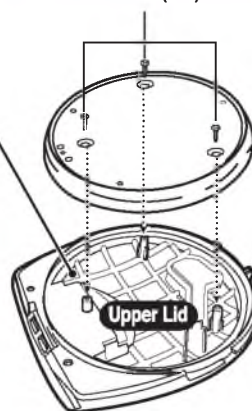
To attach the Inner Lid Gasket

- Place the Inner Lid and Middle Plate correctly.
 - Make sure to insert the pin on the Middle Plate correctly into the installation hole on the inner lid.
- Fit the Inner Lid Gasket securely to the rim of the Inner Lid as shown in the figure.
- Place them correctly onto the Upper Lid and tighten the screws securely.

When the Inner Lid Gasket takes on a white discoloration.

Please purchase and replace with a new one.

Screws (x3)



Hot water may leak from the gap between the Upper Lid and the Body when tilted if the Inner Lid Gasket becomes old and turns white. This may result in scalds. If hot water spews from the gap or there is steam even after replacing the Inner Lid Gasket, other parts may be in need of repair. Please contact Zojirushi Customer Service.

Perform every 1-3 month(s) of usage

HOW TO PERFORM CITRIC ACID CLEANING

Do not drink the water used for citric acid cleaning.

● In order to prevent gas bubbles and bubbling-over, the Citric Acid Cleaner for Electric Water Boilers (CD-K03E-JU) is recommended for cleaning. To purchase this cleaner, please visit an authorized Zojirushi dealer or www.zojirushi.com.

Preparation:

Check that the Filter is attached to the Inner Container.



NOTE

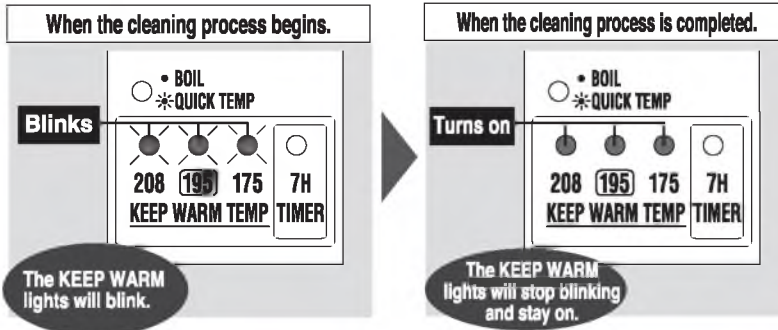
● If the Filter is dirty, remove it from the Inner Container, wash with a soft brush and reinstall.

1 Put 1 package of the Citric Acid Cleaner CD-K03E-JU in a cup and add warm water to dissolve. Pour it into the Inner Container and fill with water to the Maximum Water Level Line.

NOTE

● Do not fill over the Maximum Water Level Line. (Hot water may spill out, resulting in scalds.)

2 Close the Upper Lid, insert the Power Plug and press the **REBOIL** button for more than 3 seconds.



Cleaning time:
Approx. 1.5 hours.*

*Cleaning times may vary depending on the amount of water, water temperature and room temperature.

3 Unplug the Power Plug, detach the Upper Lid and dispose water where indicated "EMPTY FROM HERE." (Please take precautions not to splash water on the Hinge.)

NOTE

● Repeated citric acid cleaning may be necessary for hard-to-remove residues or if water does not dispense smoothly.

4 To remove the smell of citric acid, fill the Inner Container with water. Boil and dispense about a cup of hot water, allow to cool, then dispose the remaining water.

● If mineral or Alkalized Ionic water is used, calcium tends to build up on the surface of the Inner Container. If scale accumulates on the Inner Container or the Filter, boiling may become louder than usual and water may not dispense smoothly. Frequent cleaning is recommended when using mineral or Alkalized Ionic water.

When disposing hot water:

- Take precaution with the hot water and steam. You may scald yourself.
- Take precaution as hot water may drip from the Spout, causing scalds.

To cancel the Citric Acid Cleaning at any time, unplug the Power Plug for more than 5 seconds.

REPLACEMENT PARTS

- Replacement parts may be available for an additional charge. Please replace damaged parts only with new parts.
- When replacing parts, please record the model number and part name beforehand. Then contact either the store where you purchased the product or Zojirushi Customer Service.
Zojirushi Customer Service
1-800-733-6270 www.zojirushi.com

Parts Names	Parts Number
Inner Lid Gasket	627575-00
Filter	627402-00
Citric Acid Cleaner for Electric Water Boilers (1 oz. / 30 g × 4 packets)	CD-K03E-JU

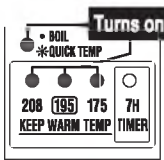
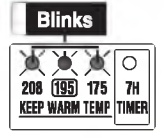
Q&A ON PRODUCT USE

Is it okay to use the product for heating liquids other than water? ▶	Do not fill the product with any liquid other than water. It may cause malfunction, or may overflow and cause scalding.	▶ pg.3
Does the water need to be changed every day? ▶	To prevent scale from building up, please change the water at least once a day.	▶ pg.10
Is it okay to use mineral water or Alkalized Ionic water? ▶	Yes. However, when mineral or Alkalized ionic water is used, a floating residue may develop or milky white substance may form on the surface of the Inner Container. This is due to the ingredients in the water and is harmless to your health. Frequent cleaning is recommended.	▶ pg.9 ▶ pg.16
I accidentally drank water while performing the Citric Acid Cleaning. Is this harmful to my health? ▶	Please follow the instructions shown on the package of the citric acid cleaner CD-K03E-JU.	
Is it okay to go out while the product is turned on? ▶	It is safe to use the product unattended as it has an Automatic Shut-Off function (power to the heater will be automatically turned off), which will be activated once it is empty of water. However be careful not to repeat the boiling process without filling the Inner Container with water, as the Nonstick Coating may discolor and peel.	▶ pg.11

TROUBLESHOOTING GUIDE Please check the following points before calling for service.

Condition	Cause	Remedy
Water does not heat up.	Power Plug is not connected to an electrical outlet.	Connect the Power Plug.
Water does not boil.	The Quick Temp mode is selected. (Water does not reach a boil under Quick Temp mode.)	Press the BOIL/QUICK TEMP button, select the regular Boil mode. (see pg.14)
	Scale or other residue has accumulated on the Inner Container.	Perform citric acid cleaning. (see pg.16)
	You have not performed citric acid cleaning regularly.	
	The product has not been used for a long time.	Boil water, unlock and dispense about 34 oz. (1 liter) of hot water. Discard the remaining. (see pg.9)
Hot water has a disagreeable odor.	If tap water is used under Quick Temp mode, it will take an additional 15 minutes after boiling completes to remove up to 80% of the chlorine.	If this is an issue, use the regular Boil mode instead. (see pg.14)
	<ul style="list-style-type: none"> ●A mild plastic odor may be noticeable with a new product. This odor will gradually fade away. ●You may smell chlorine (used for sterilization of tap water) after boiling. 	
Water pours out by itself from the Spout or Steam Vent.	Check that the Inner Container is not filled over the Maximum Water Level Line.	Pour out the excess water until it is below the Maximum Water Level Line.
The Quick Temp mode can not be selected.	Is the 208 Keep Warm mode selected?	Select the 195 or 175 Keep Warm mode, then select the Quick Temp mode. (see pg.14)
The 208 Keep Warm mode can not be selected during the Quick Temp mode.	You can not select the 208 Keep Warm mode during the Quick Temp mode.	
Water does not dispense or does not pour properly.	Hot water does not pour properly a few minutes after boiling.	Open the Upper Lid to release air bubbles, then close. (Be careful of steam when opening the Upper Lid.)
	Scale or other residue has accumulated on the Inner Container and Filter.	Clean the Inner Container and Filter. (see pg.15)
	The Automatic Dispense Lock is engaged.	Press the UNLOCK button, then press the DISPENSE button. (see pg.10)
	Power Plug is not connected to an electrical outlet.	Connect the Power Plug.

TROUBLESHOOTING GUIDE (cont.)

Condition	Cause	Remedy	
Water does not dispense or does not pour properly.	Calcium may build up in the water route and prevent water from dispensing smoothly.	Perform citric acid cleaning. (see pg.16)	
Milky white and rough-surfaced objects have built up on the surface of the Inner Container. Boiling is louder than usual.	Excessive accumulation of scale and other build-up on the surface of the Inner Container can cause boiling to become louder.	<div style="border: 1px solid black; padding: 5px;"> <p style="text-align: center;">Scale</p> <p>Over time and use, calcium and other minerals contained in water build up on the surface of the Inner Container and the Filter. It is called "scale" and is harmless to your health.</p> </div>	
Red rust-like spotting appears on the Inner Container surface.	Caused by iron in the water, not deterioration of the Inner Container.		
A filmy, floating residue is noticeable. (Could the Nonstick Coating be peeling off?)	Residue is due to the mineral content in water, not from corrosion of the Inner Container or peeling of the Nonstick Coating.		
A white floating residue is noticeable.	Remove the Inner Lid and check the plastic part of the Upper Lid for abnormalities. (see pg. 15)	If this part is discolored or if it feels rough to the touch, replace it.	
Water is not hot.	Initially upon boiling or if it has been a while after dispensing, the water may not be very hot.	Please discard the first cup (of the hot water).	
	Is the Timer set?	Press the BOIL/QUICK TEMP button. (see pg.13)	
The Body becomes hot.	●When the water temperature and/or room temperature is high, the outer surface of the Body may reach up to 140°F (60°C). This is not a malfunction.		
The Power Cord becomes hot.	●The Power Cord may become hot while the water is boiling. This is not a malfunction.		
Error Displays and their meaning	Four lights turn on at the same time.	 <p>The Inner Container is low on water or hot water was added to the Inner Container, causing the Automatic Shut-Off function to engage.</p>	Unplug the Power Plug and wait until the Inner Container cools down. Add water and plug in the Power Cord. (see pg.11)
	The Keep Warm lights blink at the same time.	 <p>The Inner Container is in a citric acid cleaning cycle.</p>	To cancel the citric acid cleaning cycle, unplug the Power Plug and wait more than 5 seconds before plugging back in. (see pg.16)
Replacement for the Upper Lid	Inner Lid Gasket	●The Inner Lid Gasket is replaceable so please check it every year. When steam comes out from the gap between the Upper Lid and the Main Body, or becomes white or discolored, replace it with a new one. (see pg.15)	
	Plastic Parts	●The plastic part of the Upper Lid may deteriorate over use. When replacing the Inner Lid Gasket, check the plastic part. If discoloration occurs or the surface becomes coarse, replace the Upper Lid (must purchase separately). (We take care in only using materials for the plastic parts that are safe and hygienic for food contact.)	

The Nonstick Coating of the Inner Container may become damaged over use. Contact the retail store where you purchased this product or call Zojirushi Customer Service at: 1-800-733-6270

MEMO

A large rectangular area with a dashed border, intended for writing a memo. The area is empty and occupies most of the page below the header.



www.zojirushi.com

CD-LTC ©