



ELECTRIC KETTLE OPERATING INSTRUCTIONS

CK-BAC10

INDEX

IMPORTANT SAFEGUARDS.....	2
PARTS NAMES AND FUNCTIONS.....	6
BOIL MODE.....	8
POUR HOT WATER.....	10
DISPOSE WATER.....	11
AUTOMATIC SHUT-OFF FUNCTION.....	11
CLEANING AND MAINTENANCE.....	12
REPLACEMENT PARTS & OTHER ITEMS.....	13
HOW TO REPLACE THE INNER LID GASKET.....	13
HOW TO PERFORM CITRIC ACID CLEANING.....	14
Q&A ON PRODUCT USE.....	14
SPECIFICATIONS.....	14
TROUBLESHOOTING GUIDE.....	15

*This product is for boiling water only and does not have a Keep Warm function.

IMPORTANT SAFEGUARDS

BASIC SAFETY PRECAUTIONS SHOULD ALWAYS BE FOLLOWED WHEN USING ELECTRICAL APPLIANCES, INCLUDING THE FOLLOWING:

1. Read all instructions thoroughly.
2. Avoid touching hot surfaces and do not close or clog the steam vent opening under any circumstances. The handles and knobs are provided for your safety and protection.
3. To safeguard against fire, electric shock and possible injury, keep the power cord, plugs and the appliance away from water or other liquids.
4. Close supervision is necessary when any appliance is used by or near children.
5. Unplug from outlet when not in use and before cleaning. Allow the appliance to cool before adding or removing parts, and before cleaning the appliance.
6. Do not use or operate any appliance with a damaged cord or plug. If the appliance malfunctions or has been damaged in any manner, unplug the appliance and return it to the nearest authorized service facility or dealer for examination, repair or adjustment.
7. The use of accessories or attachments not recommended by the appliance manufacturer may result in fire, electric shock or other injury to persons.
8. Do not use outdoors.
9. Keep the power cord away from hot surfaces and do not let the cord hang over the edge of tables or counters.
10. Do not place on or near a heated surface such as a gas or electric stove, or in a heated oven.
11. Always use extreme caution when moving an appliance containing hot liquids.
12. Place the kettle (body) securely on the base before plugging the cord into a wall outlet.
13. Do not use the appliance for other than intended or specified purposes.
14. To protect against electrical hazard, unplug the cord before cleaning.
15. Scalding may occur if the lid is opened during the boiling cycle.

SAVE THESE INSTRUCTIONS

THIS APPLIANCE IS FOR HOUSEHOLD USE ONLY.

This appliance is supplied with a short power cord to reduce the risk of becoming entangled in or tripping over. Extension cords may be used if care is exercised in their use. If an extension cord is used, the marked electrical rating of the cord should be at least as great as the electrical rating of the appliance, and a longer cord should be arranged so that it will not drape over the countertop or tabletop where it can be pulled on by children or tripped over unintentionally.

This appliance has a polarized plug (one blade is wider than the other). To reduce the risk of electric shock, this plug was designed to fit into a polarized outlet in only one direction. If the plug does not fit fully into the outlet, do not attempt to force it or modify it in any way. Simply reverse the plug and insert. If it still does not fit, contact a qualified electrician.

IMPORTANTES MESURES DE SÉCURITÉ

Pour utiliser des appareils électriques, il faudrait toujours prendre les précautions de base, y compris les suivantes.

1. Lisez toutes les instructions.
2. Ne touchez pas les surfaces qui peuvent être chaudes. Utilisez les poignées ou les boutons.
3. Pour éviter les chocs électriques, ne plongez pas le cordon, la fiche ou l'appareil portatif dans l'eau ou un autre liquide.
4. Surveillez bien les enfants s'ils utilisent un appareil ou s'ils se trouvent à proximité d'un appareil en marche.
5. Appareils portatifs. Débranchez l'appareil de la prise de courant quand vous ne l'utilisez pas avant d'enlever ou d'installer des pièces et avant de le nettoyer. Laissez l'appareil refroidir avant de le manipuler.
Appareils branchés à demeure. Assurez-vous que l'appareil est ARRÊTÉ quand vous ne l'utilisez pas avant d'enlever ou d'installer des pièces et avant de le nettoyer.
6. Appareils portatifs. Ne faites pas fonctionner l'appareil si le cordon ou la fiche sont endommagés, si l'appareil ne fonctionne pas correctement, s'il est tombé ou s'il a été endommagé. Confiez au service de réparation recommandé le plus proche tout examen, réparation ou réglage électrique ou mécanique de l'appareil.
7. L'utilisation d'accessoires non recommandés par le fabricant de l'appareil peut causer des blessures.
8. N'utilisez pas l'appareil à l'extérieur.
9. Ne laissez pas le cordon pendre par-dessus le bord d'une table ou d'un comptoir et assurez-vous que le cordon n'est pas en contact avec des surfaces chaudes.
10. Ne placez pas l'appareil près d'un brûleur à gaz allumé ou d'un élément électrique ou tension ou dans un four allumé.
11. Soyez très prudent en déplaçant un appareil qui contient du liquide chaud.
12. Le cas échéant, branchez toujours la fiche à l'appareil et assurez-vous que l'interrupteur de celui-ci est à la position ARRÊT (OFF) avant de brancher la fiche dans la prise. Pour débrancher l'appareil, placez l'interrupteur à ARRÊT (OFF) puis retirez la fiche de la prise de courant.
13. N'utilisez l'appareil que pour la fonction à laquelle il est destiné.
14. Pour vous protéger contre une secousse électrique, pensez à débrancher l'appareil avant tout nettoyage.
15. Si le couvercle est ouvert alors que l'eau est bouillante, il existe un risque de brûlures.

CONSERVEZ CES INSTRUCTIONS

CET APPAREIL EST UNIQUEMENT À USAGE DOMESTIQUE.

L'appareil est équipé d'un cordon court afin de réduire les risques d'enchevêtrement ou de chutes sur le cordon. Des rallonges peuvent être utilisées à condition que toutes les précautions soient prises lors de leur utilisation.

Si vous vous servez d'une rallonge, sa puissance électrique indiquée devra être égale ou supérieure à celle de l'appareil; Le cordon devra être arrangé de manière à ce qu'il ne pende pas depuis le haut d'un comptoir ou d'une table où il serait à portée de main des enfants et où il occasionnerait des accidents dus à une chute ou à un enchevêtrement. L'appareil a une prise polarisée (l'une des lames est plus large que l'autre). Pour réduire les risques de chocs électriques, la prise s'insère dans un seul sens à l'intérieur d'une prise murale polarisée. Si la prise ne s'adapte pas correctement dans la prise murale, retournez-la. Si elle ne s'adapte toujours pas, contactez un électricien spécialisé. Ne cherchez en aucun cas à modifier la prise.

IMPORTANT SAFEGUARDS

Before use

These WARNINGS and CAUTIONS are intended to protect you and others from personal injury and household damage. To ensure safe operation, please follow carefully.

WARNINGS

Do not use a power source other than 120V AC.

- Use of any other power supply voltage may cause fire or electric shock.

Use only an electrical outlet rated at 15 amperes minimum, and do not plug other devices into the same outlet.

- Plugging other devices into the same outlet may cause the electrical outlet to overheat, resulting in fire.

Do not immerse the product in water or splash it with water, and do not put it on a wet surface such as a sink.

- Doing so may cause short circuit or electric shock.

Do not fill over the Maximum Water Level Line.

- Overfilling may cause hot water to spill out, resulting in scalds.

Do not move the product or drain hot water by holding the Upper Lid.

- This may result in scalding by hot water spilling out from the Spout or Steam Vent. Always use the handle when carrying.

Do not cover the Steam Vent with anything such as a dishcloth.

- Hot water may spill out, resulting in scalds. It may also cause deformation or discoloration of the Upper Lid or breakdown of the product.

Do not allow children to use the product unsupervised. Keep it out of the reach of infants.

- Children are at risk of burns, electric shock or injury.

Do not plug or unplug the Power Cord if your hands are wet.

- Doing so may cause electric shock or injury.

Do not touch the Spout or Steam Vent.

- Doing so may cause burns or scalding. Take special precautions with children and infants.

Always dispose water by pouring it out of the spout with the Upper Lid closed securely.

- Disposing water with the Upper Lid open may cause scalding.

Do not boil anything other than water.

- Attempting to boil, cook, or heat up the following items may cause bubbling or boiling over, which may cause scalding. This may also cause clogging of the water route or corrosion of the Inner Container.

- Milk, sake, soup, charcoal, tea bags or tea leaves.
- Instant food.
- Food or sauce pouches or foods in plastic bags.

Do not place the product directly on a stovetop burner (gas stove), electric heater or an IH cooker.

- Doing so may cause fire.

If the blades or surface of the Power Plug become soiled, wipe them clean.

- A dirty Power Plug may cause fire.

Do not tilt the product or tip it over while on the Power Base.

- Hot water may spill from the Spout or Steam Vent.

Do not use the product if the Power Plug or Power Cord is damaged or if the Power Plug is loosely inserted into the electrical outlet.

- Doing so may cause electric shock, short circuit or fire.

Do not damage the Power Cord. Do not bend, pull, twist, fold, or attempt to modify the Power Cord. Do not place it on or near high temperature surfaces or appliances, under heavy items or between objects.

- A damaged Power Cord can cause fire or electric shock.

Do not slam the Upper Lid when closing.

- Hot water may spill out, resulting in scalds.

Do not modify the product. Only a repair technician may disassemble or repair this unit.

- Attempting to do so may cause fire, electric shock or injury. Make any repair inquiries to Zojirushi Customer Service.

Do not use the product as a cooler or place ice inside of it.

- This may cause condensation, resulting in electric shock or breakdown of the product.

Do not allow the Receptacle and Connector (metal parts) to become soiled with dust or come into contact with metal objects such as pins.

- This may cause electric shock, short circuit or fire.

Do not allow infants or children to lick the Receptacle and Connector (metal parts).

- Doing so may cause electric shock or injury. Take special precautions with children and infants.

Insert the Power Plug completely and securely into the electrical outlet.

- A loosely inserted Power Plug may cause electric shock, short circuit, smoke or fire.

Close the Upper Lid securely.

- Hot water may spill out when the product is overturned, resulting in scalds.

Stop using immediately if you notice any of the following symptoms indicating a malfunction or breakdown.

- Continued use of the product may cause smoke, fire, electric shocks or injury.
 - The Power Plug or Power Cord has become very hot.
 - The Power Cord is damaged or the electricity turns on and off when touched.
 - The Body is deformed or unusually hot.
 - Smoke is arising from the product or there is a burning smell.
 - Some part of the product is cracked, loose or unstable.
 - The product emits steam for at least 5 minutes continuously.

If any of the above occurs, unplug the product immediately and return to the store where you purchased it for check-ups and/or repairs.

CAUTIONS

Do not pour hot water during the boiling process.

- Hot water can spurt out, resulting in scalds.

Unplug the Power Plug from the outlet when the product is not in use.

- Leaving the Power Plug in an outlet may cause the insulation to become damaged, resulting in electric shock, short circuit or fire.

Do not place or use the product on unstable surfaces or on surfaces that are vulnerable to heat.

- Doing so may cause fire.

Always unplug the product by holding the Power Plug, not by pulling the Power Cord.

- Pulling the Power Cord to unplug the product may cause electric shock, short circuit or fire.

Always use caution when opening the Upper Lid and avoid skin contact with steam.

- Loose water or steam may escape upon opening the Upper Lid and cause scalds.

Do not use the product near walls, furniture or beneath shelving.

- Steam or heat may damage, discolor or deform walls, furniture or shelving.

Do not use other Power Base than the one provided. Do not use the Power Base for other appliances.

- Doing so may cause malfunction or fire.

Do not hold or carry the product by the Lid Lock.

- Doing so may cause injuries or scalds.

Do not touch hot surfaces during or immediately after use.

- Touching hot surfaces may cause burns. Be especially careful with metal parts such as the Lid and the Inner Container.

Please allow the product to cool down before cleaning.

- Touching hot surfaces may cause burns.

Replace the Inner Lid Gasket if it becomes discolored white.

- Hot water may spill out when the product is tilted or tipped over accidentally, and may cause scalding.

If the Power Cord is damaged, it must be replaced by the manufacturer, its service agent or similarly qualified persons to avoid hazards.

IMPORTANT

Do not operate the product when it is empty.

- This may burn or damage the product.

Avoid rough handling, dropping or bumping the product.

- This may cause damage or cease operation of the product.

Avoid letting steam make contact with cabinets and walls when using near or under a kitchen shelf.

- This may cause discoloration or deformation.

Allow the product to dry completely when storing the product in an area where it may freeze.

- If water left inside freeze, it may cause breakdown or malfunction.

Do not use the product where its steam may come into contact with other electrical appliances.

- The steam may cause fire, malfunction, discoloration or deformation to other electrical appliances.

Do not drag the product or the Power Base over any surface while attempting to move.

- This may cause damage to surfaces such as countertops.

Do not use the product near a heat source.

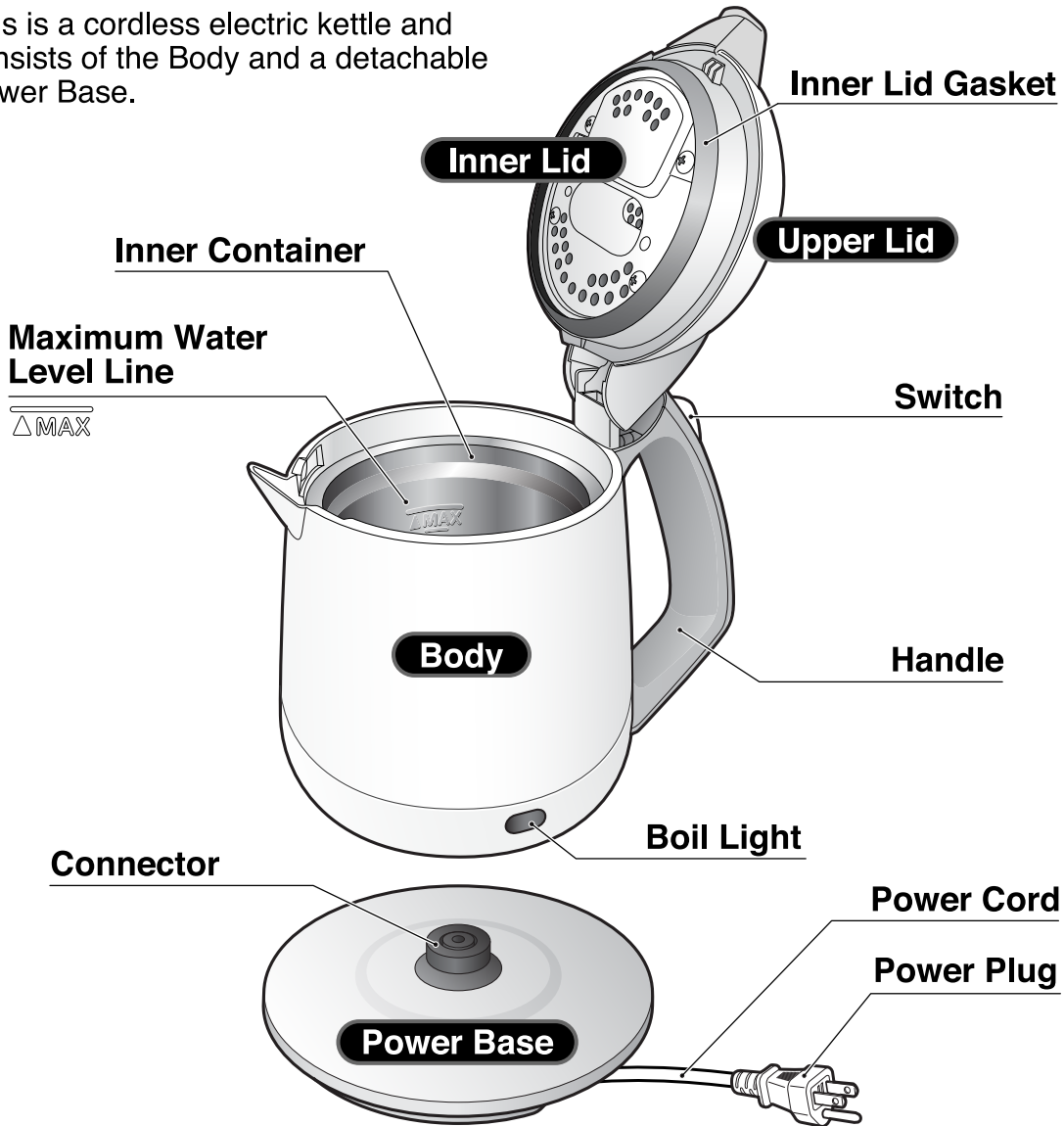
- This may cause fire, breakdown or damage of the product.

When boiling completes, do not press and hold the Switch to force the product to continue boiling.

- Steam may leak out and cause scalding.

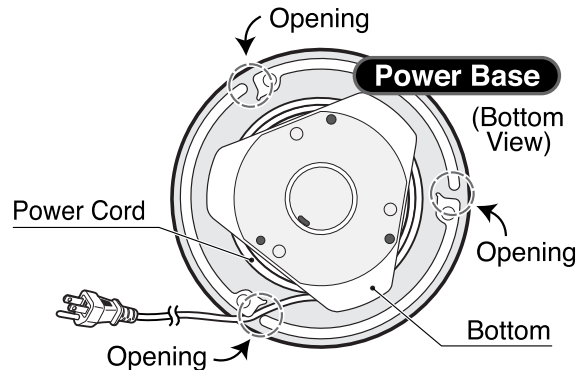
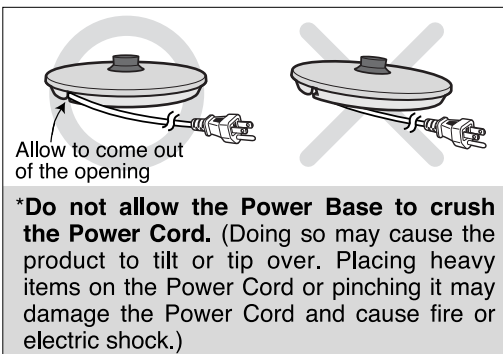
PARTS NAMES AND FUNCTIONS

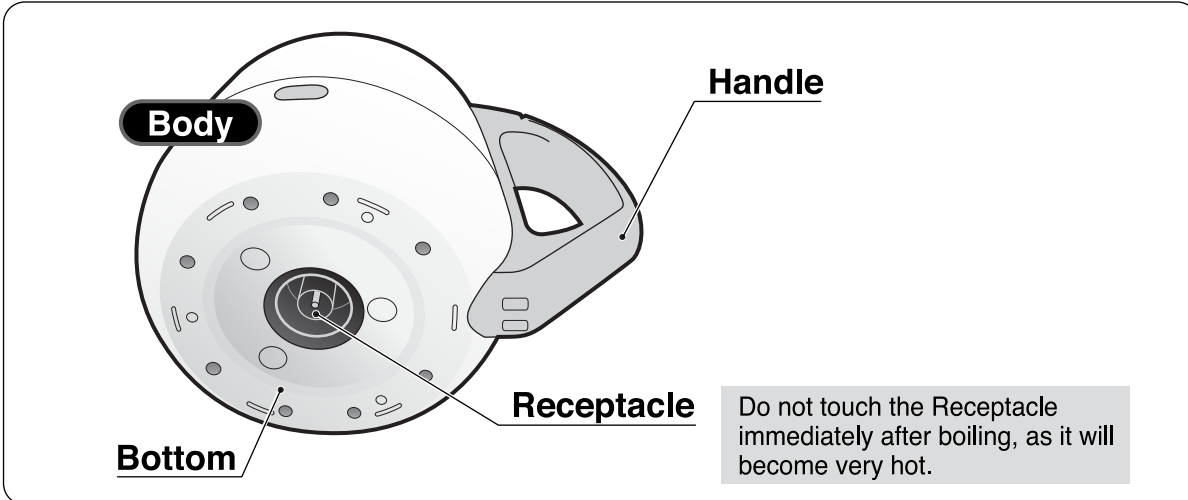
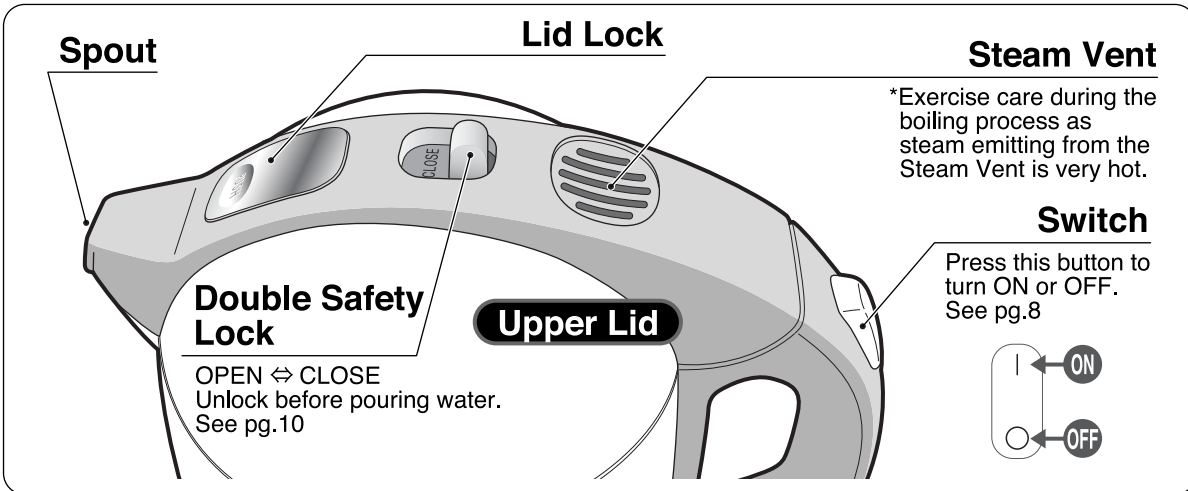
*This is a cordless electric kettle and consists of the Body and a detachable Power Base.



How to Shorten/Lengthen the Power Cord

Adjust the length of the Power Cord and allow it to come out of the Power Base from one of the three openings at the bottom.

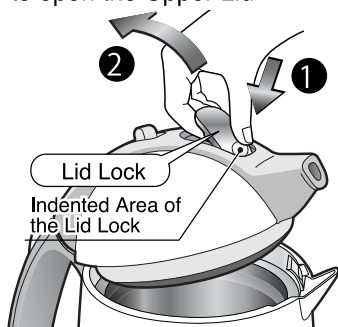




How to Open/Close the Upper Lid

To Open

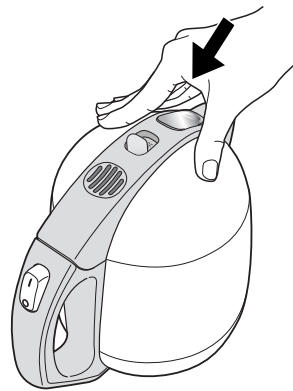
- 1 Press the indented area of the Lid Lock with thumb.
- 2 Pull the Lid Lock up with fingers to open the Upper Lid.



Be careful not to tip the product over.

To Close

Depress the Upper Lid straight until it clicks shut.



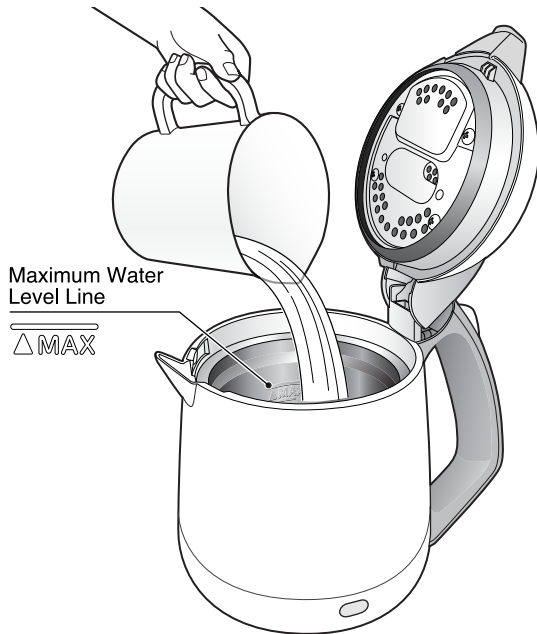
●Do not depress at an angle. (The Upper Lid may not close securely.)



BOIL MODE

The first time you use the product or after storing it for a long period of time, boil water once and discard it before boiling water for consumption.

- 1** Remove the Body from the Power Base, open the Upper Lid and fill the Inner Container with water using a pitcher or other container.



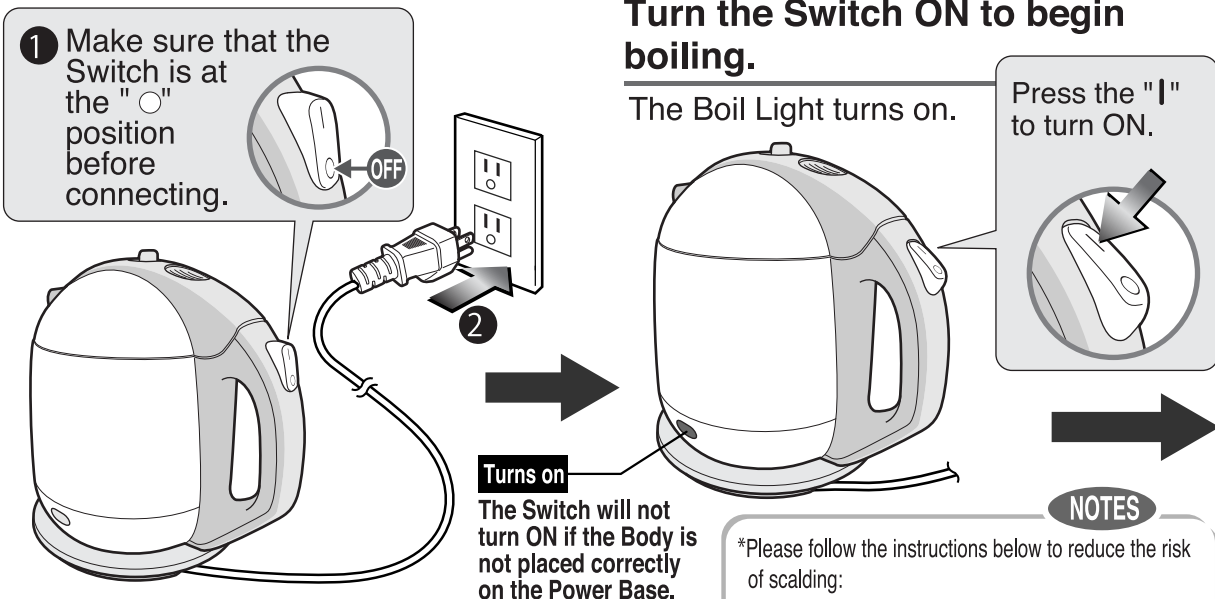
NOTES

- *Do not fill the Inner Container directly from a water faucet or place the product on a wet surface such as a sink. (Exposing the heating element directly to water may cause malfunction.)
- *Avoid splashing water on the Body. (May cause malfunction.)
- *Do not fill over the Maximum Water Level Line. (Hot water may overflow from the Steam Vent or Spout.)
- *Do not fill the Inner Container with any liquid other than water.
- *Do not use water additives such as charcoal for water purification or mineral additives. (Small particles may get clogged inside of the product.)
- *Be sure to close the Upper Lid securely. If the Upper Lid is not closed securely, the power will not switch OFF when boiling completes.
- *Do not fill the Inner Container while the Body is connected to the Power Base. (Doing so may splash water on the Power Base and cause malfunction.)

*When using mineral water:

When mineral water is used, a floating residue may develop or a milky white substance may form on the surface of the Inner Container. This is due to the ingredients in the water and is harmless to your health.

- 3** Connect the Power Cord and turn the Switch ON.



NOTES

- *Please follow the instructions below to reduce the risk of scalding:
 - Do not cover the Steam Vent with a cloth.
 - Be careful of steam coming out from the Steam Vent.
 - Do not open the Upper Lid while the Boil Light is on.
 - Do not attempt to pour hot water during the boiling process.
 - Do not move the product during the boiling process.

***Use only an electrical outlet rated at 15 amperes minimum, and do not plug other devices into the same outlet.**

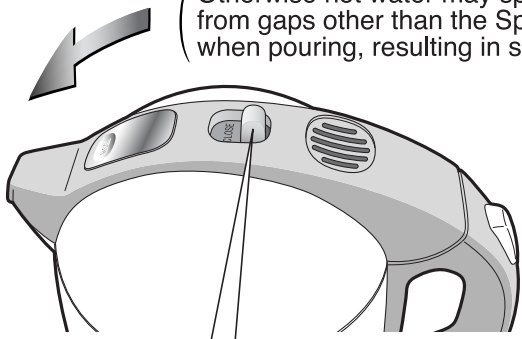
Plugging other devices into the same outlet may cause the electrical outlet to overheat, resulting in fire.

2 Close the Upper Lid and place the Body on the Power Base.

Use the provided Power Base only.

Close the Upper Lid securely until it clicks.

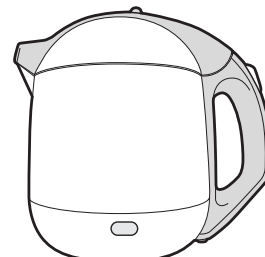
(Otherwise hot water may spill out from gaps other than the Spout when pouring, resulting in scalds.)



Make sure that the Double Safety Lock is at the CLOSE position.

(Hot steam may come out from the Spout if it is at the OPEN position, resulting in scalds.)

Set the Body on the Power Base correctly so that the Connector fits in the Receptacle securely.



Receptacle

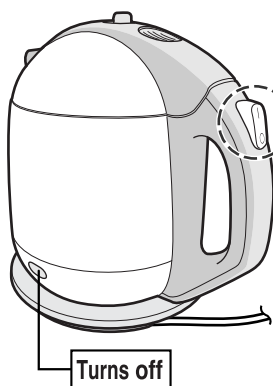
Connector

Place the Power Base on a clean, level and stable surface.

The first time you use the product you may notice the smell of plastic. This is normal and will gradually fade away.

When boiling has completed, the product automatically switches OFF.

The Boil Light turns off.



Automatically switches OFF.

NOTE

When boiling completes, do not press and hold the Switch to force the product to continue boiling. Doing so may cause steam to leak out and cause scalding.

Time required to boil water:

Approx. 5 minutes 30 seconds

(At a room temperature of 68°F with the Inner Container filled to the Maximum Water Level Line with water temperature at 68°F.)

*Press "○" to turn the Switch OFF during the boiling process.

*This product does not have a Keep Warm function.

Be careful as the Body will become hot immediately after boiling completes.



NOTE

Especially the Steam Vent, Receptacle and the inside of the Handle will become hot.

Inside of the Handle

Receptacle

*Unplug the Power Plug from the electrical outlet when boiling has completed.

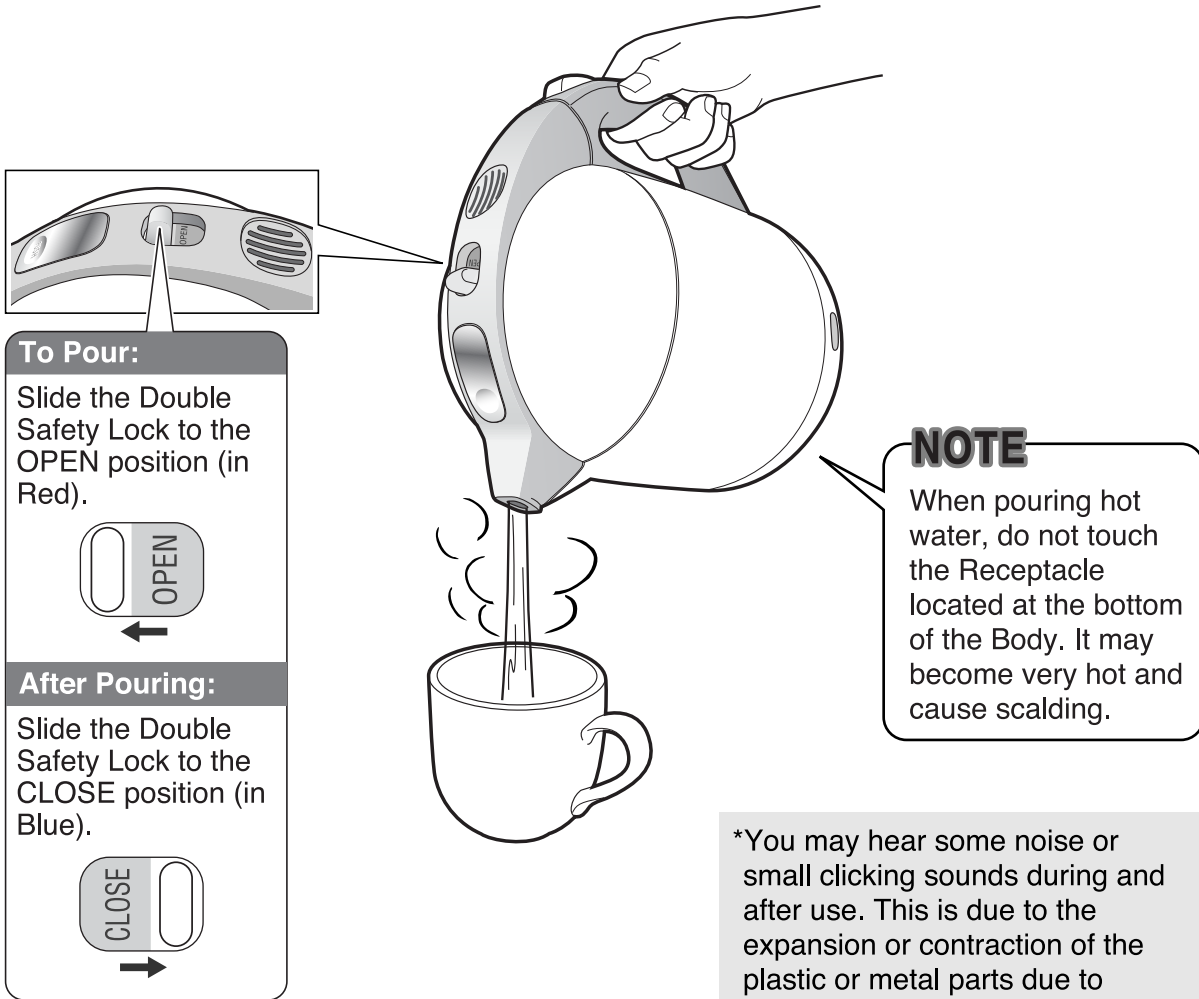
Take special precautions with infants and prevent them from playing with this product to avoid electric shock or injury.

POUR HOT WATER

Wait until boiling completes to pour hot water.

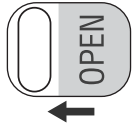
Make sure that the Switch is OFF at the "○" position, then lift the Body from the Power Base by holding the Handle and tilt it to pour hot water.

*This product utilizes a mechanism which monitors the amount of steam to turn the power OFF. Condensation may occur and drip from the bottom of the Body. This is normal and does not indicate a malfunction.



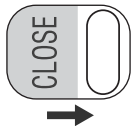
To Pour:

Slide the Double Safety Lock to the OPEN position (in Red).



After Pouring:

Slide the Double Safety Lock to the CLOSE position (in Blue).



NOTES

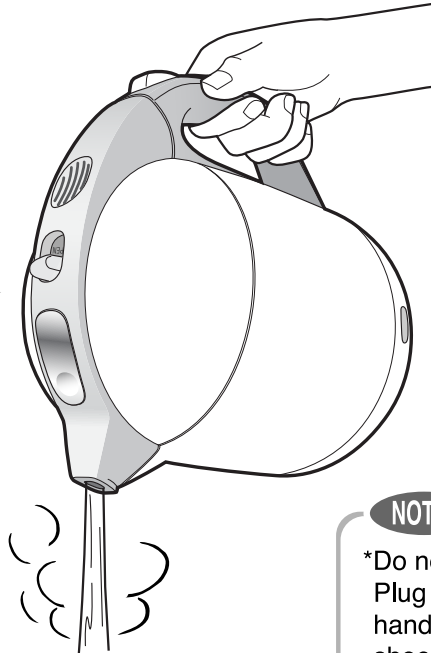
- *Make sure that steam is not emitting from the Steam Vent before opening the Double Safety Lock to avoid scalding.
- *Do not tilt, shake or tip the Body over as hot water may spill from the Spout even if the Double Safety Lock is at the CLOSE position.
- *Do not open the Upper Lid immediately after boiling completes. Doing so may cause scalding.
- *Do not tilt and pour the hot water too quickly. Doing so may cause scalding.

DISPOSE WATER

Discard left over water after each use, emptying the Inner Container completely.

Remove the Body from the Power Base by holding the Handle and tilt it to discard hot water.

Make sure the Upper Lid is closed securely.



NOTES

- *Do not plug or unplug the Power Plug or touch the Connector with wet hands. (Doing so may cause electric shock or injury.)
- *Handle carefully to avoid loose water from splashing on your hands, etc. (Could cause scalding.)
- *Do not allow hot water to splash on the Switch, Boil Light, Body or the bottom of the Body. (Doing so may cause scalding or breakdown.)
- *Dispose the water at least once a day. (Leaving water in the Inner Container can accumulate scale.)

Automatic Shut-Off Function

The Automatic Shut-Off function activates to shut down power to the heater when the product is switched ON without filling the Inner Container with water, in order to prevent damage from overheating.



Remedy

Allow the Inner Container to cool, fill with water then turn the Switch ON again.

CLEANING AND MAINTENANCE

All repairs and other services should be performed by an authorized service representative.

NOTES

- *Do not turn the product upside down if the bottom is wet. (Water may get inside the body and cause it to break or rust.)
- *Do not use a thinner, benzene, abrasive cleansers or brushes (nylon/metal), bleach or anything that may damage the surface of the product. (May cause damages to the Inner Lid and the Inner Container.)
- *Do not use a dishwasher for cleaning or drying. (May cause the plastic parts to deform.)
- *Before storing the product for longer period of time, dry it completely and pack in a plastic bag to prevent odors from developing.

Body/Upper Lid/Power Base

Wipe clean with a well-wrung soft cloth.

*Never wash the product under running water, nor immerse it in water. Do not allow water to splash on the Receptacle and Connector. (Doing so may cause water to get inside the product, resulting in malfunction or rust.)

Inner Lid

Wipe with a soft wet sponge.

Inner Container

Perform the Citric Acid Cleaning (see p.14) periodically.

Epecially when...

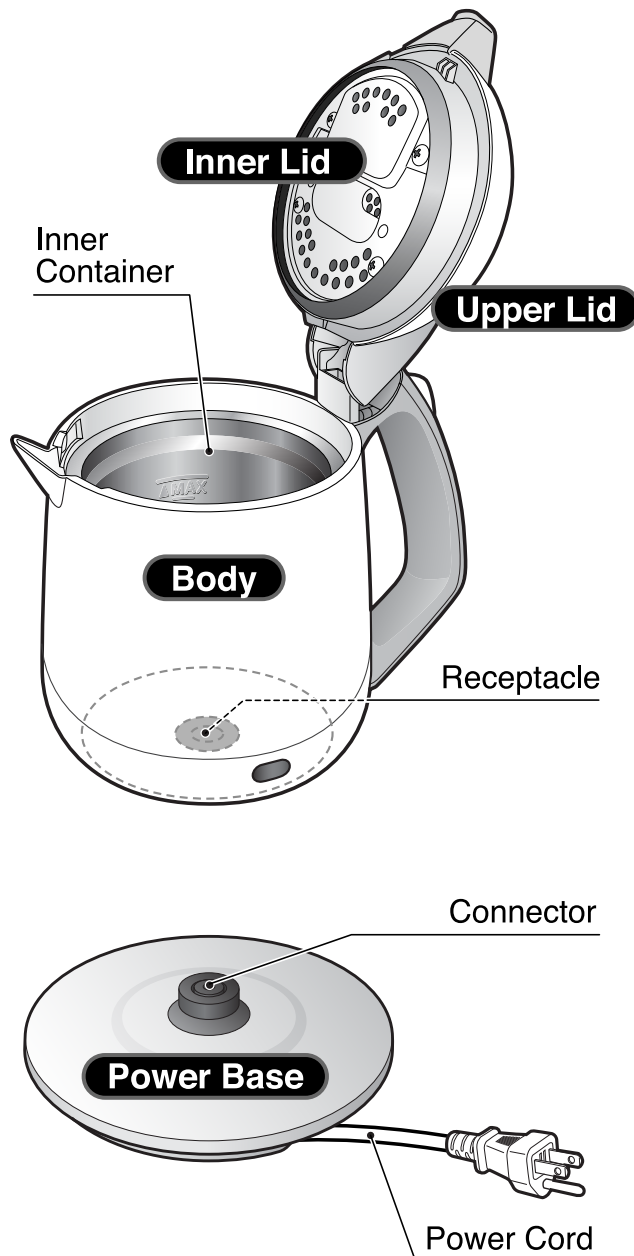
*Red rust-like spotting is visible on the Inner Container.

*Milky white or gray discoloration and/or filmy objects are found in the water.

(The condition of the Inner Container will vary depending on the water quality and frequency of use.)

Receptacle/Power Cord/Connector

Wipe clean with a soft dry cloth.



REPLACEMENT PARTS & OTHER ITEMS

HOW TO REPLACE THE INNER LID GASKET

The Inner Lid Gasket may need to be replaced due to time and wear. Check it about once a year.

Wipe new Inner Lid Gaskets with a wet soft sponge before attaching to the Inner Lid.

To remove the Inner Lid Gasket

- ① Loosen the 4 screws.
- ② Remove the Inner Lid Gasket.

NOTE

*Do not remove the screws from the Upper Lid to avoid losing them.

To attach the Inner Lid Gasket

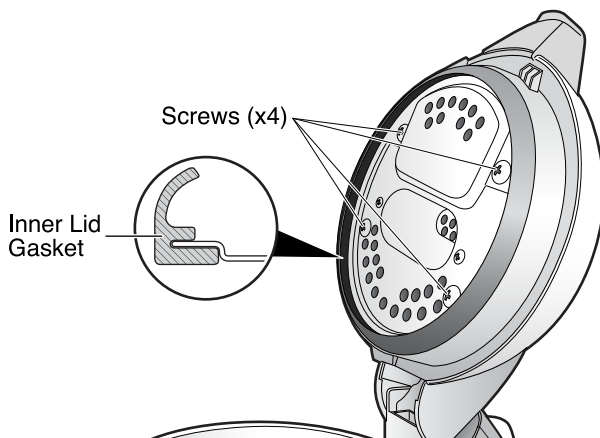
- ① Fit the Gasket of the Inner Lid securely to the outer circumference as shown in the figure.
- ② Tighten the screws securely.

NOTE

*If you remove the Inner Lid, be sure to reinstall it correctly.

When the Inner Lid Gasket takes on a white discoloration.

Please purchase and replace with a new one.



Hot water may leak from the gap between the Upper Lid and the Body when tilted if the Inner Lid Gasket becomes old and turns white. This may result in scalds.

REPLACEMENT PARTS & OTHER ITEMS

*Replacement parts may be available for an additional charge. Please replace damaged parts only with new parts.

*When replacing parts, please record the model number and part name beforehand. Then contact either the store where you purchased the product or Zojirushi Customer Service.

Part Name	Part Number
Inner Lid Gasket	BF296022M-00
Inner Container Cleaner for Electric Pots (30g×4 packs)	CD-K03E-JU

Zojirushi Customer Service

1-800-733-6270

www.zojirushi.com

Perform every 1-3 month(s) of usage

HOW TO PERFORM CITRIC ACID CLEANING

NOTE In order to prevent gas bubbles and bubbling-over, the citric acid Inner Container Cleaner for Electric Pots (CD-K03E-JU) is recommended for cleaning. To purchase this cleaner, please visit an authorized Zojirushi dealer or www.zojirushi.com. See pg.13

1 Put 1 pack of citric acid CD-K03E-JU in a cup and add warm water to dissolve. Pour it into the Inner Container and fill with water to the Maximum Water Level Line.

2 Close the Upper Lid, insert the Power Plug and press "I" to turn the Switch ON to boil. Leave it to soak for about 2 hours.

3 Pour the water out.

4 Fill with fresh water, boil again and pour it out to rinse.

NOTES

*Do not fill over the Maximum Water Level Line. (Hot water may spill out, resulting in scalds.)

*Repeated citric acid cleaning might be necessary for hard-to-remove residues.

*If Alkalized Ionic Water is used, calcium will tend to build up on the surface of the Inner Container. If scale accumulates on the Inner Container, boiling may become louder than usual.

Q&A ON PRODUCT USE

Is it okay to use the product for heating liquids other than water?	▶ Do not fill the product with any liquid other than water. It may cause malfunction, or may overflow and cause scalding.	▶ P.4
Does the water need to be changed every day?	▶ To prevent scale from building up, please change the water at least once a day.	▶ P.11
Is it okay to use mineral water?	▶ Yes. However, when mineral water is used, a floating residue may develop or milky white substance may form on the surface of the Inner Container. This is due to the ingredients in the water and is harmless to your health.	▶ P.8
Is it okay to use Alkalized Ionic Water?	▶ Yes. However, calcium tends to build up on the surface of the Inner Container with this type of water, so frequent cleaning is recommended.	▶ P.14
I accidentally drank water while performing the citric acid cleaning. Is this harmful to my health?	▶ Please follow the instructions shown on the package of the citric acid CD-K03E-JU.	

SPECIFICATIONS

Model No.	CK-BAC10		
Capacity	1.0 liter		
Rating	AC 120 V 1300W 60Hz		
Power Cord	2.5 feet (0.75 m)		
External Dimensions (inches)	Body Only	9-1/2(W) x 6-1/2(D) x 8-3/4(H)	With Power Base
Weight		Approx. 2.4 lbs. (1.1 kg)	Approx. 3.1 lbs. (1.4 kg)

*In high altitudes or severely cold areas, the product may not perform as specified. Avoid using the product in such areas or in other extreme conditions.

TROUBLESHOOTING GUIDE

Please check the following points before calling for service.

Condition	Cause	Remedy
Water is dripping from the bottom of the Body.	*This product utilizes a mechanism which monitors the amount of steam to turn the power OFF. Therefore, condensation may occur and drip from the bottom of the Body. This is normal and does not indicate malfunction. See pg.10.	
Power does not turn on. Boil Light does not turn on.	Power Plug is not connected to an electrical outlet.	Connect the Power Plug.
	The Body is not set correctly on the Power Base.	Set it correctly.
	The Switch is not ON at the "I" position.	Turn the Switch ON to the "I" position.
	Metal flakes or dusts have accumulated on the Connector.	Remove metal flakes or dusts.
Water pours out by itself from the Spout or Steam Vent.	Check that the Inner Container is not filled over the Maximum Water Level Line.	Pour out the excess water until it is below the Maximum Water Level Line.
There is a noise when pouring water or opening and closing the Upper Lid.	This sound is normal and comes from the movement of the weight which prevents hot water from spilling when the kettle is accidentally tipped over.	This does not indicate a malfunction.
There is a noise during and after use.	This is due to the expansion or contraction of the plastic or metal parts due to heating or cooling, and does not indicate a malfunction.	This does not indicate a malfunction. See pg.10.
A filmy, floating residue is noticeable.	Residue is due to the mineral content in water, not from corrosion of the Inner Container.	Clean the Inner Container with Citric Acid (Inner Container Cleaner). See pg.14
Milky white and rough-surfaced objects have built up on the surface of the Inner Container. (Boiling is louder than usual.)	Excessive accumulation of scale and other build-up on the surface of the Inner Container can cause boiling to become louder.	<p style="text-align: center;">Scale</p> <p>Over time and use, calcium and other minerals contained in water build up on the surface of the Inner Container. It is called "scale" and is harmless to your health.</p>
Red or gray rust-like spotting appears on the Inner Container surface.	Caused by iron or calcium in the water, not deterioration of the Inner Container.	
Replacement for the Upper Lid	Inner Lid Gasket	*The Inner Lid Gasket is replaceable so please check it every year. When steam comes out from the gap between the Upper Lid and the Body, or becomes white or discolored, replace it with a new one. See pg.13
	Plastic Parts	*The plastic part of the Upper Lid may deteriorate over use. If discoloration occurs or the surface becomes coarse, replace the Upper Lid.
Miscellaneous	The Body becomes hot.	*When the water temperature and/or room temperature is high, the outer surface of the Body may reach up to 140°F. This is not a malfunction.
	The Power Cord becomes hot.	*The Power Cord may become hot while the water is boiling. This is not a malfunction.



www.zojirushi.com

CK-BAC (F)(E)(D)