



USA

COFFEE MAKER

OPERATING INSTRUCTIONS

EC-EJC120

Always follow basic safety precautions when using electrical appliances.
Read all instructions carefully.
Please keep these Operating Instructions at hand for easy reference.

INDEX

IMPORTANT SAFEGUARDS	2
SPECIFICATIONS	5
BEFORE USE	5
PARTS NAMES	6
HOW TO REMOVE AND ATTACH EACH PART	7
HOW TO USE	8
● BREWING ICED COFFEE	12
CLEANING AND MAINTENANCE	13
● How to Perform Citric Acid Cleaning	14
TROUBLESHOOTING GUIDE	15
REPLACEMENT PARTS	15
QUICK START GUIDE	BACK COVER

IMPORTANT SAFEGUARDS

Be sure to follow the instructions.

To reduce the risk of fire, electric shock, and / or injury to persons, when using electrical appliances, basic safety precautions should always be followed, including the following:

1. Read all instructions.
2. Do not touch hot surfaces. Use handles or knobs. Do not close or clog the steam vent opening under any circumstances.
3. To protect against fire, electric shock and other injury to persons, do not immerse cord, plugs or the appliance in water or other liquids.
4. Close supervision is necessary when any appliance is used by or near children.
5. Unplug from outlet when the appliance is not in use, and before cleaning. Allow to cool before adding or removing parts other than the Glass Carafe, and before cleaning the appliance.
6. Do not operate any appliance with a damaged cord or plug, or after the appliance malfunctions or has been damaged in any manner. Return appliance to the nearest authorized service facility for examination, repair or adjustment.
7. The use of accessory attachments not recommended by the appliance manufacturer may result in fire, electric shock or other injury to persons.
8. Do not use outdoors.
9. Keep the power cord away from hot surfaces and do not let the cord hang over the edge of tables or counters.
10. Do not place on or near a hot gas or electric burner, or in a heated oven.
11. To disconnect, turn the power off by turning off the Switch, then remove plug from wall outlet.
12. Do not use appliance for other than intended use.
13. To protect against electrical hazards, unplug the cord at all times before cleaning.
14. Scalding may occur if the Lid is opened during the brewing cycles.
15. The Glass Carafe is designed for use with this appliance. It must never be used on a range top.
16. Do not set the hot Glass Carafe on a wet or cold surface.
17. Do not use a cracked Glass Carafe or a Glass Carafe having a loose or weakened handle.
18. Do not clean the Glass Carafe with cleansers, steel wool pads, or other abrasive materials.



NOTE: This appliance has a polarized plug (one blade is wider than the other). To reduce the risk of electric shock, this plug is intended to fit into a polarized outlet only one way. If the plug does not fit fully into the outlet, reverse the plug. If it still does not fit, contact a qualified electrician. Do not attempt to modify the plug in any way.

SAVE THESE INSTRUCTIONS

THIS APPLIANCE IS FOR HOUSEHOLD USE ONLY.

- A. A short power-supply cord is provided to reduce risks resulting from becoming entangled in or tripping over a longer cord.
- B. Extension cords may be used if care is exercised in their use.
- C. If an extension cord is used, (1) the marked electrical rating of the extension cord should be at least as great as the electrical rating of the appliance, (2) if the appliance is of the grounded type, the extension cord should be a grounding-type 3-wire cord, and (3) the longer cord should be arranged so that it will not drape over the counter top or table top where it can be pulled on by children or tripped over.







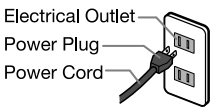
	WARNING RISK OF FIRE OR ELECTRIC SHOCK DO NOT OPEN	
WARNING: TO REDUCE THE RISK OF FIRE OR ELECTRIC SHOCK, DO NOT REMOVE COVER (OR BOTTOM) NO USER-SERVICEABLE PARTS INSIDE REPAIRS SHOULD BE DONE BY AUTHORIZED SERVICE PERSONNEL ONLY		

	The lightning flash with arrowhead symbol, within an equilateral triangle, is intended to alert the user to the presence of uninsulated "dangerous voltage" within the product's enclosure that may be of sufficient magnitude to constitute a risk of fire or electric shock to persons.
	The exclamation point within an equilateral triangle is intended to alert the user to the presence of important operating and maintenance (servicing) instructions in this literature.

IMPORTANT SAFEGUARDS (cont.)

These WARNINGS and CAUTIONS are intended to prevent property damage or personal injury to you and others.






⚠ WARNINGS

 <p>Do not modify the product. Only a repair technician may disassemble or repair this unit. Attempting to do so may cause fire, electric shock or injury. Make any repair inquiries to Zojirushi Customer Service.</p>	 <p>Insert the Power Plug completely and securely into the electrical outlet. A loosely inserted Power Plug may cause electric shock, short circuit, smoke or fire.</p>
 <p>Do not immerse the product in water or splash it with water. Doing so may cause short circuit or electric shock.</p> <p>Do not allow liquid to come in contact with the Power Plug or Power Cord. Doing so may cause short circuit or electric shock.</p>	<p>Use only an electrical outlet rated at 15 amperes minimum, and do not plug other devices into the same outlet. Plugging other devices into the same outlet may cause the electrical outlet to overheat, resulting in fire.</p>
 <p>Do not plug or unplug the Power Plug if your hands are wet. Doing so may cause electric shock or injury.</p>	<p>If the blades or surface of the Power Plug become soiled, wipe them clean. A dirty Power Plug may cause fire.</p>
 <p>Do not touch the Steam Vent and Warming Plate, or bring your hands or face near the Steam Vent. Doing so may cause burns or scalding. Take special precautions with children and infants.</p>	<p>Stop using immediately if you notice any of the following symptoms indicating a malfunction or breakdown. Continued use of the product may cause smoke, fire, electric shock or injury.</p> <ul style="list-style-type: none"> • The Power Plug or Power Cord has become very hot. • The Power Cord is deeply damaged or deformed. • There is a burning smell. • Some part of the product is cracked, unstable or loose. • The electricity turns on and off when the Power Cord is touched or moved. • The product does not operate even though the Switch is turned on. • Water leaks from the Main Body. • The Main Body is deformed or has become very hot. <p>If any of the above occurs, unplug the product immediately and return to Zojirushi Customer Service for check-ups and/or repairs.</p>
 <p>Do not allow children to use the product unsupervised. Keep it out of the reach of infants. Children are at risk of burns, electric shock or injury.</p> <p>Do not use a power source other than 120 V AC. Use of any other power supply voltage may cause fire or electric shock.</p> <p>Do not use this product without the Glass Carafe. Doing so may cause scalding.</p> <p>Do not use the product if the Power Plug or Power Cord is damaged or if the Power Plug is loosely inserted into the electrical outlet. Doing so may cause electric shock, short circuit or fire.</p> 	<p>This product is not intended for use by persons (including children) with reduced physical, sensory or mental capabilities, or lack of experience and knowledge, unless they have been given supervision or instruction concerning use of the product by a person responsible for their safety. Children should be supervised to ensure that they do not play with the product.</p>
<p>Do not damage the Power Cord. Do not bend, pull, twist, fold, or attempt to modify the Power Cord. Do not place it on or near high temperature surfaces or product, under heavy items or between objects. A damaged Power Cord can cause fire or electric shock.</p>	

●The illustrations used in these Operating Instructions may vary from the actual product you have purchased.

IMPORTANT SAFEGUARDS (cont.)

⚠ CAUTIONS

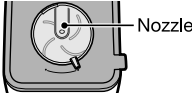
 <p>Do not touch hot surfaces such as the Lid, Shower Head, Filter Basket, or body of the Glass Carafe while the product is in use or shortly after. Doing so may cause burns or injury.</p>	 <p>After filling the Water Tank with water, do not move the Main Body. Doing so may cause scalding, malfunction or water leak.</p>
 <p>Do not use the product on surfaces that are vulnerable to heat. Doing so may cause fire.</p>	<p>Do not leave the Glass Carafe removed for long periods of time. Doing so may cause scalding.</p>
<p>Do not use the product on unstable surfaces. Doing so may cause scalding or injury.</p>	<p>Do not refill the Water Tank while coffee is brewing. Coffee may overflow and cause scalding.</p>
<p>Do not use the product near walls or furniture. Steam or heat may damage, discolor or deform walls or furniture.</p>	 <p>Unplug the Power Plug from the electrical outlet when the product is not in use. Leaving the Power Plug in an outlet may cause injury or burns, or electric shock and fire due to insulation degradation.</p>
<p>Do not use near an open flame. Doing so may cause fire.</p>	 <p>Please allow the product to cool down before cleaning. Touching hot surfaces may cause burns.</p>
<p>Do not heat the Main Body and Glass Carafe in a microwave oven or place it on top of direct flames (such as a gas stove top), or electric or induction heating (IH) cookers. Doing so may cause smoke or fire. The Handle of the Glass Carafe may deform or sparks may emit from the metal parts.</p>	<p>Always unplug the product by holding the Power Plug, not by pulling the Power Cord. Pulling the Power Cord to unplug the product may cause electric shock, short circuit or fire.</p>
<p>Do not move the Main Body when the Glass Carafe is in place. Doing so may cause scalding or other injury.</p>	<p>If the Power Cord or Power Plug is damaged, it must be replaced by the manufacturer, its service agent or similarly qualified persons to avoid hazards.</p>

IMPORTANT

<p>■ Do not use the product outdoors. Doing so may cause malfunction.</p>	<p>■ Do not drop the Glass Carafe or hit it against a hard surface or object. It may break the glass and cause injury.</p>
<p>■ Do not use or place the product on wet surfaces. Doing so may cause electric shock.</p>	<p>■ Do not soak the Glass Carafe in water, splash it with water or place it on a wet surface while it is still hot. If the Glass Carafe is damaged, it could easily break. If it does, please be careful not to cut your hands with broken glass.</p>
<p>■ Do not use the product where its steam may come into contact with other electrical appliances. The steam may cause fire, malfunction, discoloration or deformation to other electrical appliances.</p>	<p>■ Do not fill the Water Tank with anything other than water, such as milk, alcohol, coffee, or hot water. Doing so may cause malfunction.</p>
<p>■ When using the product on a kitchen shelf or in a similar location, exercise care to ensure that steam does not come into contact with the ceiling. Doing so may cause discoloration or deformation of the ceiling.</p>	<p>■ Do not leave the Water Tank filled with water. Doing so may cause malfunction, discoloration, odor, or deterioration in water quality.</p>
<p>■ Do not use the product on a carpet or fabric tablecloth. The carpet or tablecloth may be stained if the coffee splashes out.</p>	<p>■ Do not use finely-ground coffee. Doing so may cause the coffee to overflow and cause scalding.</p>
<p>■ Make sure that the entire product is placed squarely on a table and does not protrude. Failure to do so may cause scalding or other injury.</p>	<p>■ Do not use more than 6 leveled Coffee Scoops (approx. 2.54 oz. / 72g) of ground coffee. Doing so may cause the coffee to overflow and cause scalding.</p>

IMPORTANT SAFEGUARDS (cont.)

IMPORTANT

<p>■ Do not operate the product with an empty Water Tank (except during KEEP WARM). It may cause malfunction.</p>	<p>■ Do not touch the Shower Head, paper filter, or Filter Basket immediately after brewing has finished. Doing so may cause scalding.</p>
<p>■ Do not open the Lid while the product is in use. Doing so may cause scalding.</p>	<p>■ Wait at least 5 minutes before brewing consecutively. Otherwise, steam or hot water may come out from the Steam Vent when water is added or the product is moved, and may cause scalding.</p>
<p>■ Do not open the Lid if the Main Body is still hot. Even if the Power Plug is unplugged from the electric outlet, hot water or steam may come out from the Nozzle, resulting in scalds.</p> 	<p>■ Do not discard water by turning the Main Body upside down. Doing so may cause scalding or other injury.</p>
<p>■ Do not put your hand under the Main Body Gasket while the product is in use or shortly after. Hot water may drip and cause scalding.</p>	<p>■ This product is intended for household use only.</p>

SPECIFICATIONS

Model No.		EC-EJC120
Rating		AC 120 V 60 Hz
Electric Consumption		1050 W
Capacity		Max. 61 oz. (1.8 L)
Coffee Brewing System		Automatic Drip
Length of the Power Cord		1' 11" (0.6 m)
External Dimensions	(approx. inches)	8-1/8 (W) × 8-3/4 (D) × 15-1/4 (H)
	(approx. cm)	20.5 (W) × 22 (D) × 38.5 (H)
Weight		Approx. 7 lbs. (2.9 kg)

- External dimensions are measured without the Handle of the Glass Carafe.
- In certain locations (at high elevations, in severely cold climates, etc.), the product may not perform as specified. Avoid using the product in such areas or in other extreme conditions.
- This product is not suitable for use in countries or regions with different power supply voltages or frequencies.

BEFORE USE

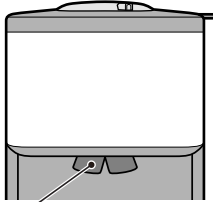
- This product is intended for household use only and not for commercial use.
- This product has been designed for brewing coffee only. **Do not use for any other purpose.** Do not fill the Water Tank with anything other than water (such as milk, alcohol, coffee, or hot water), as doing so may cause malfunction.
- This product will initially have a plastic odor, but this will fade with use.
- Do not carry the product by the Lid. Doing so may cause the product to fall.

- **Prior to initial use or when using the product after a long period of storage:**

- ① Wash the Shower Head, the Filter Basket, and the Glass Carafe. → P.13
- ② Attach each part.
- ③ Add water until it reaches the "HOT 12" Water Fill Line on the Glass Carafe and pour the water into the Water Tank.
- ④ Set the Glass Carafe (with Carafe Lid) in the Main Body. Turn on the Switch and run the water through the machine without brewing any coffee.

PARTS NAMES

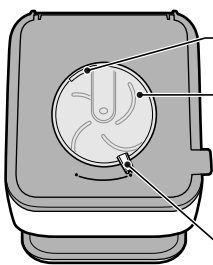
Front of Main Body



Main Body Gasket

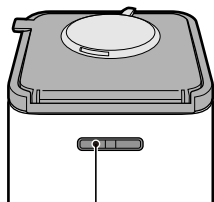
- The Main Body Gasket is not removable. Do not pull.

Top of Main Body



Steam Vent
Shower Dome
Taste Tuner

Back of Main Body



Overflow Drain

Shower Head (removable)

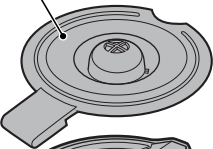
- Do not disassemble the Shower Head.

Shower Head Grip

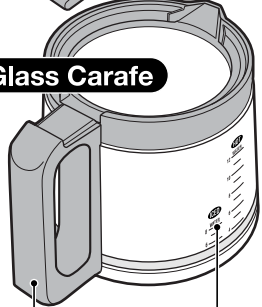


Front Back

Carafe Lid



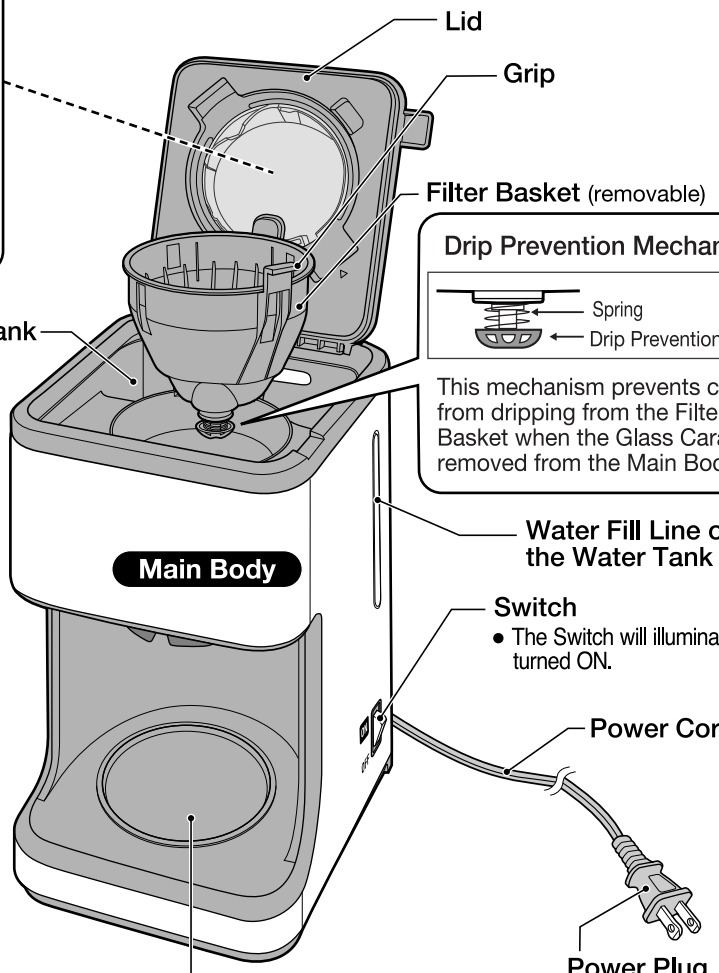
Glass Carafe



Handle Water Fill Line on the Glass Carafe

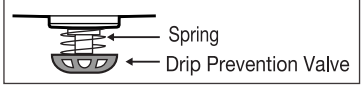
Accessories

Coffee Scoop

Lid
Grip
Filter Basket (removable)
Water Tank
Main Body
Warming Plate
Power Cord
Power Plug
Switch
• The Switch will illuminate when turned ON.
Water Fill Line on the Water Tank

Drip Prevention Mechanism



Spring
Drip Prevention Valve

This mechanism prevents coffee from dripping from the Filter Basket when the Glass Carafe is removed from the Main Body.

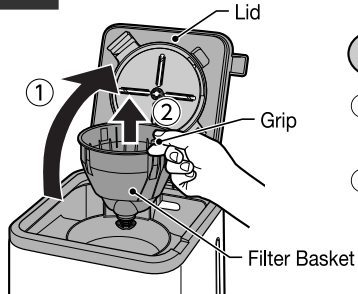
HOW TO REMOVE AND ATTACH EACH PART

- Please allow the product to cool down before removing or attaching its parts.

Filter Basket

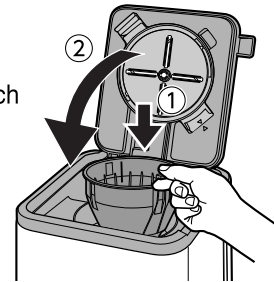
How to Remove

- ① Open the Lid.
- ② Hold the Grip and remove the Filter Basket.



How to Attach

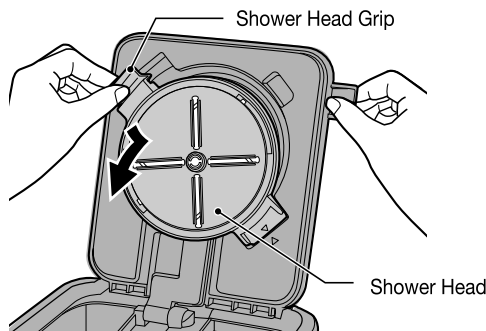
- ① Hold the Grip and attach the Filter Basket.
- ② Close the Lid.



Shower Head

How to Remove

Grasp the Shower Head Grip and remove in the direction of the arrow.

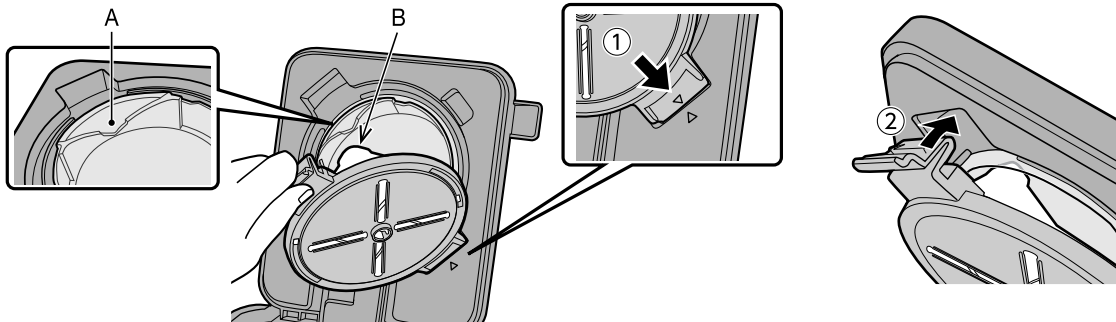


How to Attach

- Align part <A> of the Shower Dome to part of the Shower Case.

- ① Align the ▽ marks on the Shower Head and the Lid.

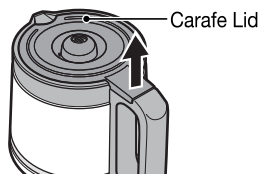
- ② Press until it clicks into place.



Carafe Lid

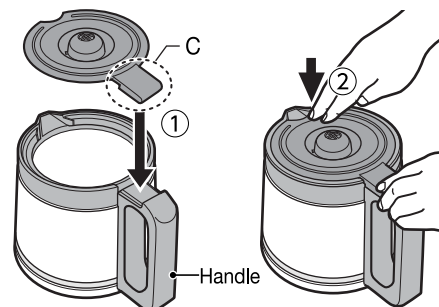
How to Remove

Lift the Carafe Lid to remove it from the Glass Carafe.



How to Attach

- ① Align part <C> of the Carafe Lid with the Handle of the Glass Carafe.
- ② Press until it clicks into place.



HOW TO USE

Brewing iced coffee → P.12

1 Fill the Water Tank with water.

① Fill the Glass Carafe with the desired amount of water using the Water Fill Lines.

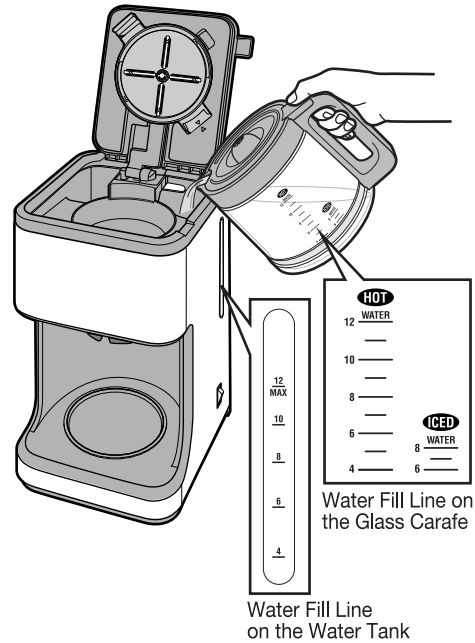
*If brewing 1-3 cups of coffee, use a measuring cup (not provided) to measure the water.

② Open the Lid and pour the water from ① to the Water Tank.

- When opening and closing the Lid, make sure that the Main Body does not tip over.
- Make sure that the Shower Head is attached to the Main Body before brewing.

Be sure to follow the instructions below to prevent a malfunction, water leak, or overflowing of coffee.

- Do not add water above “12” of the Water Fill Line on the Water Tank.
- Do not refill the Water Tank while coffee is brewing.
- Do not fill the Water Tank with hot water.
- If too much water is added to the Water Tank, water will overflow from the Overflow Drain at the back of the Main Body.



Water Amount Guidelines for 1-3 Cups

Cups Brewed		1	2	3
Water	Approx. oz.	5.2	10.5	15.7
	Approx. mL	155	310	465

Precautions When Using Hard Water:

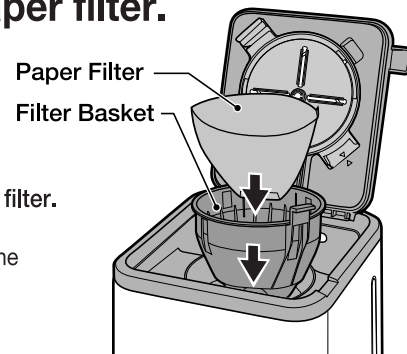
- Do not use water with 400ppm or more total dissolved solids. Minerals may build up inside the pipes of the product and hinder the brewing performance. For example, brewing may take longer or water may not drip properly.
- We recommend using water with 200ppm or less total dissolved solids.
- If brewing takes longer than usual, please clean the product using citric acid. → P.14

2 Attach the Filter Basket and place a paper filter.

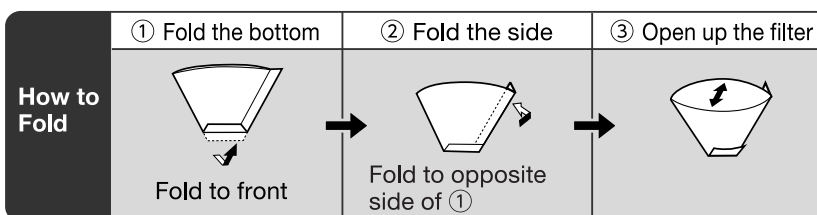
① Attach the Filter Basket to the Main Body.

② Place a paper filter in the Filter Basket.

- Do not use the product without a paper filter.
- Be sure to place the paper filter properly as described below. Failure to do so could cause coffee grounds to overflow from the filter.
 - Fold the filter as shown in the illustration below.
 - Adjust the width of the fold so that the filter does not protrude from the Filter Basket.
 - Do not use 2 or more filters at the same time.



How to Fold the Paper Filter



Please use a No. 4 cone coffee filter.

HOW TO USE (cont.)

3 Add ground coffee.

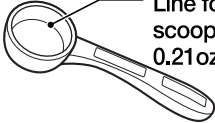
① Measure ground coffee using the provided Coffee Scoop, place in the paper filter and level the grounds.

- Use only ground coffee in the paper filter. Using anything other than ground coffee may damage the product.





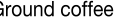

② Close the Lid.

• **Coffee Scoop**
1 leveled scoop of coffee grounds approx. 0.42 oz. / 12g

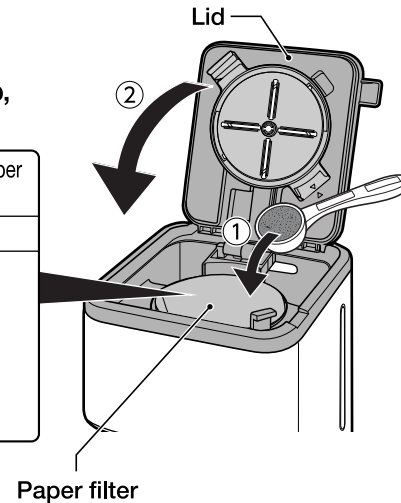
Line for 1/2 leveled scoop approx. 0.21oz. / 6g



Place the ground coffee in the paper filter and level the grounds.

✓	✗
	
	
	

Paper filter



■ Hot Coffee Brewing Guidelines

Cups Brewed		1	2	3	4	5	6	7	8	9	10	11	12
Ground Coffee	In Leveled Coffee Scoop	0.5	1	1.5	2	2.5	3	3.5	4	4.5	5	5.5	6
	Weight (Approx. oz.)	0.21	0.42	0.63	0.85	1.06	1.27	1.48	1.69	1.90	2.12	2.33	2.54
	Weight (Approx. g)	6	12	18	24	30	36	42	48	54	60	66	72

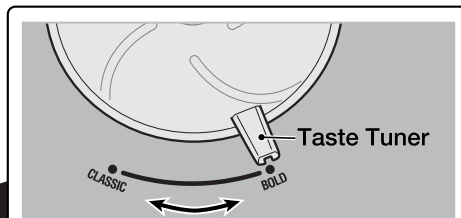
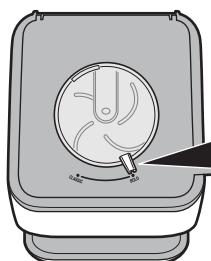
- Do not use finely-ground coffee.
Depending on the type of ground coffee being used (such as decaf or light roast), coffee grounds may overflow from the paper filter.
If this happens, reduce the number of cups to be brewed.
- Do not brew more than 6 leveled Coffee Scoops (approx. 2.54 oz. / 72g) of ground coffee.
(Doing so may cause the coffee to overflow and cause scalding.)
- When brewing just a few cups of coffee, the coffee may turn out weaker than expected. Increase the amount of ground coffee in accordance with your preferred strength.
- The number of cups brewed may vary depending on the amount, type, and fineness of the ground coffee that you use.

HOW TO USE (cont.)

4 Set the strength using the Taste Tuner.

Slide the Taste Tuner left or right to select the desired strength.

- Do not slide the Taste Tuner while brewing coffee. (Doing so may cause burns.)
- BOLD is recommended for brewing 1-3 cups of coffee. (The coffee tends to be weaker when brewed with a small amount of ground coffee.)

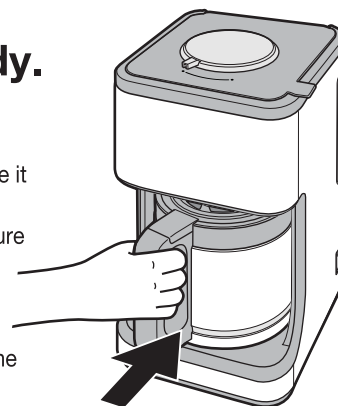


The strength of the coffee can be adjusted in a continuous manner from Classic to Bold.
CLASSIC: light and smooth flavor
BOLD: dynamic and bold flavor

5 Set the Glass Carafe in the Main Body.

Place the Glass Carafe on the Warming Plate.

- Do not scrape the Glass Carafe against the Warming Plate when you place it on the Warming Plate.
- Using the product when the Warming Plate is dirty or when there is moisture on the Warming Plate may cause the coating to peel off or become discolored.
- Be sure to place the Carafe Lid on the Glass Carafe. → P.7
- When putting the Glass Carafe in place, do not apply excessive force to the Drip Prevention Valve.



6 Insert the Power Plug into an electrical outlet, and turn on the Switch.

The Switch will illuminate and brewing will begin.

Never open the Lid while brewing.

- Do not use or place the product on wet surfaces. (Doing so may cause electric shock.)



The Switch will illuminate when turned ON.

■ Estimated Time Until Completion:

(Based on water and room temperature of 68°F / 20°C, BOLD strength setting)

Cups Brewed	1	2	3	4	5	6	7	8	9	10	11	12
Estimated Time (Approx. minutes)	3	4	5	6	7	8	9	10	10.5	11	12	13

- The estimated time until completion may vary depending on the amount of water, room temperature and the amount of ground coffee.

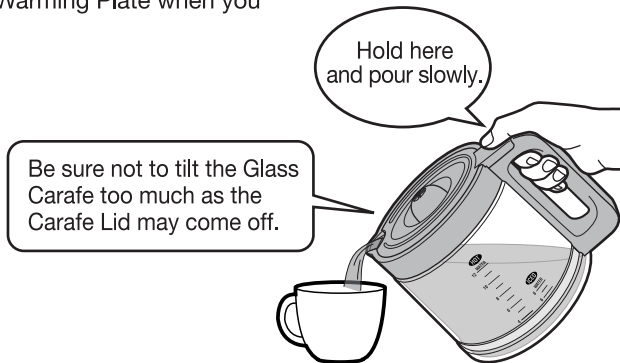
To Cancel Brewing

- ① Turn off the Switch, pull the Power Plug out of the electrical outlet.
 - ② Make sure the Main Body has cooled down and coffee is no longer dripping from the Filter Basket and then remove the Glass Carafe and the Filter Basket.
 - ③ If there is any water left in the Water Tank, place the Glass Carafe (with Carafe Lid) and Filter Basket in the product and turn on the Switch to run the water through the machine without brewing any coffee.
- Do not discard water by turning the Main Body upside down. (Doing so may cause injury or burns.)

HOW TO USE (cont.)

7 When brewing is completed, turn off the Switch and pour the coffee.

- ① Make sure coffee is no longer dripping from the Filter Basket and turn off the Switch.
 - The Switch will darken when turned OFF.
- ② Remove the Glass Carafe and pour coffee into a cup.
 - Do not scrape the Glass Carafe against the Warming Plate when you remove it from the Plate.



■ When Keeping the Coffee Warm

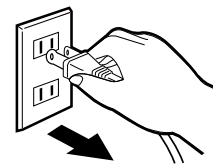
- ① Keep the Switch turned on.
- ② Keep Carafe Lid on the Glass Carafe.
 - The aroma and flavor of the coffee will deteriorate if it is left in the Glass Carafe for a long time. Try to limit the length of Keep Warm to 15 minutes max.

■ If You Like Your Coffee Hot

- Preheat cups with hot water before serving.
- Leave the Glass Carafe on the Warming Plate after brewing completes. (Try to limit the length of Keep Warm to 15 minutes max.)

8 After use

Be sure to turn the Switch off then hold the Power Plug and pull it out of the electrical outlet.



■ After Use

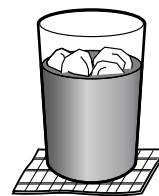
Allow the Main Body to cool completely, open the Lid, remove the Filter Basket from the Main Body, and remove the used paper filter.

- Exercise care not to burn yourself as the paper filter, which will be saturated with hot water, will be hot.
- Wipe any water droplets inside of the Lid and Main Body.

■ When Brewing Coffee Consecutively

- To brew your next pot of coffee, turn off the Switch, allow the Main Body to cool at least 5 minutes, and then follow "HOW TO USE" from step 1. → P.8
- Do not add water or move the Main Body while it is still hot. Steam or scalding water may suddenly emit from the Steam Vent, causing burns.

HOW TO USE (cont.)



BREWING ICED COFFEE

Required items

- ◆ Ground coffee for iced coffee
- ◆ Ice cubes

- 6 cups is the minimum amount of iced coffee that can be made.

Iced Coffee Brewing Guidelines and Estimated Time Until Completion

Cups Brewed		6	7	8
Ground Coffee	In Leveled Coffee Scoop	5	5.5	6
	Weight (Approx. oz.)	2.12	2.33	2.54
	Weight (Approx. g)	60	66	72
Estimated Time (Approx. minutes)		6	6.5	7

(Based on water and room temperature of 68°F / 20°C, BOLD strength setting)

- The estimated time until completion may vary depending on the amount of water, room temperature and the amount of ground coffee.

How to Brew Iced Coffee

- 1 Follow the instructions from step 1 to step 6 under “HOW TO USE” to brew the coffee. → P.8-10
 - Add water to the “ICED” line on the Glass Carafe.
 - Do not put ice cubes in the Glass Carafe before brewing coffee. (Doing so may cause coffee to overflow and cause scalding.)
- 2 When brewing is complete, carefully take the Glass Carafe out of the Main Body.
- 3 Remove the Carafe Lid, put ice cubes in the Glass Carafe, and stir the coffee to cool it down.

Ice Amount Guidelines

Cups Brewed		6	7	8
Amount of ice	Approx. number of ice cubes*	24	28	32
	Weight (Approx. oz.)	12.7	14.8	16.9
	Weight (Approx. g)	360	420	480

*Based on ice cubes measuring approx. 1 inch / 2.5 cm on all sides. The number of ice cubes to put in the Glass Carafe varies depending on the size of the cubes. Make adjustments in accordance with your preferences.

- 4 Place the Carafe Lid on the Glass Carafe and pour the coffee into a glass.
 - Place ice cubes in a glass as you like and pour the coffee over it.

CLEANING AND MAINTENANCE


Always unplug the product from the electrical outlet and allow the Main Body and Glass Carafe to cool completely before cleaning.

- Be sure to clean the product after every use.
- Do not splash the Main Body, Power Cord and Power Plug with water or immerse them in water. Doing so may cause electric shock or malfunction.
- Do not use a dishwasher or a dish-dryer. Doing so may cause deformation.
- Do not use boiling water to wash the product or parts as they may deform or break.
- Do not use the following:
 - Detergents other than mild kitchen detergent, such as thinner and bleach. Doing so may cause discoloration, cracks, degradation or corrosion.
 - Polishing powder, nylon brushes, scrub brushes, anything made with metal, eraser pads, hard nylon sponges and abrasive cleaners. Doing so may cause corrosion.
- When using chemically treated cloths, do not rub too hard or leave them on the product for a long time as the surface of the product may become damaged from chemical reactions.
- If you plan not to use the product for an extended period of time, allow it to dry completely to avoid unpleasant odors and store it in a plastic bag or other suitable container.

Main Body, Warming Plate

- ① Wipe the Main Body and Warming Plate clean with a soft cloth immersed in diluted mild kitchen detergent and wrung well.
- ② Wipe with a well-wrung soft damp cloth.
- ③ Wipe dry with a soft dry cloth.

- Exercise care concerning burns when discarding coffee.
- Wipe any coffee droplets or grounds remaining on the Warming Plate or the Main Body (in the vicinity of the Warming Plate).
- Wipe any coffee grounds remaining between the Main Body and the Lid so they do not fall into the Water Tank.
- The Main Body Gasket is not removable.



Glass Carafe, Shower Head

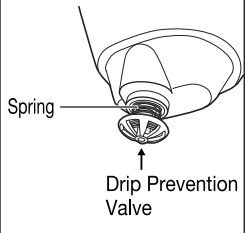
- ① Wash with a sponge or soft material with diluted mild kitchen detergent.
- ② Rinse with water.
- ③ Wipe dry with a soft dry cloth.

- Be sure to fully drain water from the Shower Head. Water may remain inside the part.
- Do not disassemble the Shower Head.
- Do not drop the Glass Carafe or hit it against a hard surface or object. It may break the glass and cause injury.

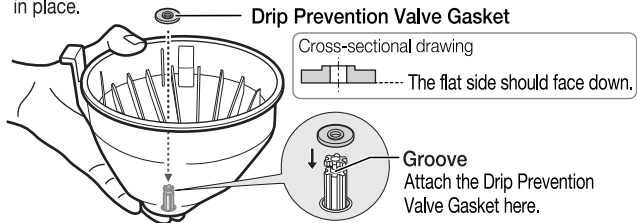
Filter Basket

- ① Wash the Filter Basket clean with a sponge or soft material with diluted mild kitchen detergent.
- ② Rinse with water.
- ③ Pour water in the Filter Basket, press the Drip Prevention Valve two or three times and wash.
- ④ Wipe dry with a soft dry cloth.

- If coffee grounds clog the Drip Prevention Valve, it may not seal properly and coffee may leak. Be sure to wash it after each use.
- Be sure to fully drain water from the Filter Basket. Otherwise, this water may drip into your coffee during brewing.
- Exercise care as pulling or forcibly twisting the Drip Prevention Valve may cause it to come off.
- Do not immerse the Filter Basket in water. Doing so may cause water to collect in spaces inside the part, resulting in rust or causing its shape to deform.



• **Do not disassemble the Drip Prevention Valve.**
If the Drip Prevention Valve Gasket comes off, insert the Drip Prevention Valve with Spring into the Filter Basket. Attach the Drip Prevention Valve Gasket to the Groove while pressing up on the Drip Prevention Valve to hold in place.





Drip Prevention Valve Gasket

Cross-sectional drawing
..... The flat side should face down.

Groove
Attach the Drip Prevention Valve Gasket here.

• **Be sure that the Drip Prevention Valve Gasket is attached securely.**
Water may leak if it is deformed or is loose.

✓	Attached correctly	
✗	Water may leak from gaps	 Loose

Power Cord and Power Plug

Wipe with a soft dry cloth.

CLEANING AND MAINTENANCE (cont.)

If hot water does not dispense smoothly, clean using citric acid.

Minerals contained in water may build up inside the pipes and other parts with use.

If minerals accumulate, hot water may not dispense smoothly, the amount of coffee brewed may be reduced, or hot water may leak from gaps in the Main Body.

- Remove any mineral buildup by cleaning with citric acid. (See “How to Perform Citric Acid Cleaning” below.)
- Perform citric acid cleaning about every 4 weeks of usage.
The cleaning interval depends on your water quality. If your area has water that’s high in mineral content or if you use mineral water, the product will be more susceptible to mineral buildup.

How to Perform Citric Acid Cleaning

- ① Put 1 package of the Citric Acid Cleaner CD-K03E-JU in the Glass Carafe and add a cup of warm water to dissolve.
- ② Add water to the “HOT 12” Water Fill Line on the Glass Carafe, mix thoroughly, and pour the resulting citric acid solution into the Water Tank.
- ③ Attach the Filter Basket and Shower Head to the Main Body (without any paper filter) and place the Glass Carafe (with Carafe Lid) onto the Warming Plate.
- ④ Turn on the Switch (to start running the solution through the product).
- ⑤ Once the citric acid solution falls to the “4” line on the Water Tank, turn off the Switch.
- ⑥ Pour the citric acid solution that’s been run through the product into a different container, cool it, and remove any white crystals or other matter in the solution.
- ⑦ Allow the Main Body to cool for at least **5 minutes**.
- ⑧ Pour the citric acid solution from ⑥ back into the Water Tank and repeat ④ through ⑦ until the solution no longer contains white crystals or other matter. (Finally, turn off the Switch once the citric acid solution is no longer coming out of the Filter Basket.)
- ⑨ After allowing the Main Body and Warming Plate to cool sufficiently, rinse the Glass Carafe and then run water through the product several times to eliminate any citric acid odor. (When brewing more than one pot of water, wait at least **5 minutes** after the Switch turns off before starting the next brewing cycle.)
- ⑩ Turn off the Switch and unplug the Power Plug from the electrical outlet.

- In order to prevent gas bubbles and bubbling-over, the Citric Acid Cleaner for Electric Water Boilers (CD-K03E-JU) is recommended for cleaning. (Available separately) → P.15

Citric acid (100%) is used as a food additive and is harmless from a food sanitation standpoint, but do not consume it.

- If hot water does not dispense smoothly, perform citric acid cleaning again.

TROUBLESHOOTING GUIDE Please check the following before calling for service.

Condition	Cause	Remedy
The product does not operate even when the Switch is turned on.	Is the Power Plug inserted correctly?	Insert the Power Plug into the electrical outlet.
Hot water does not dispense. Hot water does not dispense smoothly.	Is the Water Tank filled with water?	Pour water into the Water Tank. → P.8
	When minerals accumulate inside the pipes and other parts, hot water may not dispense smoothly. In that case, perform citric acid cleaning. → P.14	
Coffee or coffee grounds overflow from the filter.	Has the paper filter been placed properly in the Filter Basket?	Place the paper filter properly in the Filter Basket. → P.8
	Did you add more than 6 scoops of coffee grounds?	Do not add more than 6 scoops of coffee grounds. → P.9
	Is the Drip Prevention Valve clogged with coffee grounds?	Clean the Filter Basket. → P.13
	Has the Filter Basket been placed properly in the Main Body?	Place the Filter Basket properly in the Main Body. → P.7
	Is finely-ground coffee being used?	Please do not use finely-ground coffee.
	Are you using two or more layers of paper filter?	Use just one paper filter.
	Depending on the type of coffee or paper filter being used, coffee or coffee grounds may overflow from the filter. In that case, reduce the amount of coffee (number of cups) to be brewed.	
There is water left in the Water Tank.	When minerals accumulate inside the pipes and other parts, hot water may not dispense smoothly and water may be left in the Water Tank. In that case, perform citric acid cleaning. → P.14	
A noise is heard before or after brewing is complete.	The hissing sound from steam being forced out may be heard before and after brewing is complete.	
The Power Cord becomes hot.	The Power Cord may become hot while the product is turned on. This is not a malfunction.	
When performing cleaning or maintenance.	Unplug the Power Plug from the electrical outlet and allow the Main Body to cool for at least 5 minutes first.	

REPLACEMENT PARTS

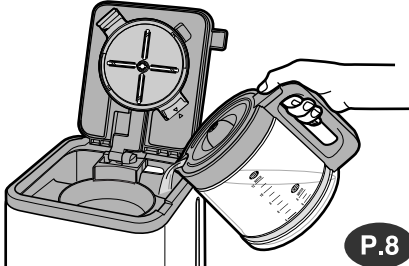
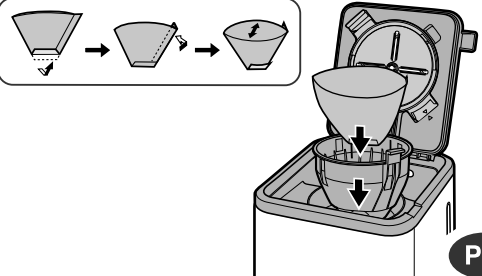
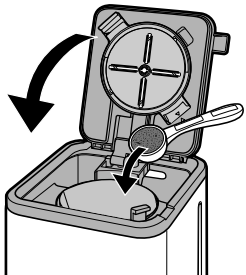
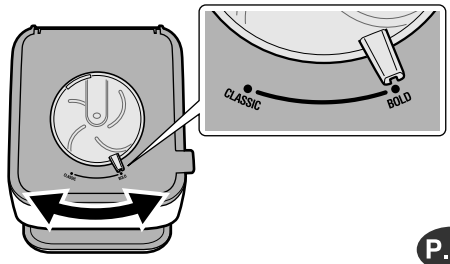
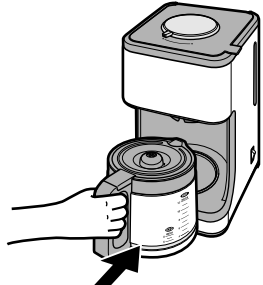


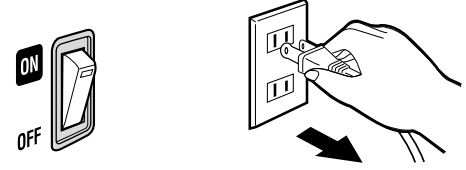
- Replacement parts may be available for an additional charge. Please replace damaged parts only with new parts.
- When replacing parts, please record the model number and part name beforehand. Parts can be purchased through Zojirushi.com, by contacting Zojirushi Customer Service, or the store where you purchased the product.

Zojirushi Customer Service
1-800-733-6270
www.zojirushi.com

Parts Name	Parts Number
Glass Carafe	JUGECESC
Coffee Scoop	BX194029L
Citric Acid Cleaner for Electric Water Boilers (1 oz. / 30g × 4 packets)	CD-K03E-JU

- The Glass Carafe (sold as a replacement part) does not include the Carafe Lid.

QUICK START GUIDE

<p>1</p>  <p>P.8</p>	<p>2</p>  <p>P.8</p>
<p>3</p>  <p>P.9</p>	<p>4</p>  <p>P.10</p>
<p>5</p>  <p>P.10</p>	<p>6 Start Brewing</p>  <p>The Switch will illuminate when turned ON.</p> <p>P.10</p>
<p>7 Brewing Completes</p>  <p>P.11</p>	<p>8 Turn off</p>  <p>P.11</p>

Hot Coffee Brewing Guidelines

(See P.8 and 9)

Cups Brewed		1	2	3	4	5	6	7	8	9	10	11	12
Water	Approx. mL	155	310	465	Measure using the Water Fill Lines on the Glass Carafe.								
Ground Coffee	In Leveled Coffee Scoop	0.5	1	1.5	2	2.5	3	3.5	4	4.5	5	5.5	6