



POP-UP TOASTER OPERATING INSTRUCTIONS

ET-XAC20

ZUTTO



INDEX

IMPORTANT SAFEGUARDS.....	2
SPECIFICATIONS.....	6
PARTS NAMES AND FUNCTIONS.....	7
HOW TO USE.....	8
TIPS ON TOASTING.....	8
CLEANING AND MAINTENANCE.....	10
TROUBLESHOOTING GUIDE.....	11

IMPORTANT SAFEGUARDS

Basic safety precautions should always be followed when using electrical appliances, including the following:

1. Read all instructions thoroughly.
2. Do not touch hot surfaces. Use handles or knobs.
3. To safeguard against fire, electric shock and possible injury, keep the power cord, plugs and the appliance away from water or other liquids.
4. Close supervision is necessary when any appliance is used by or near children.
5. Unplug from outlet when not in use and before cleaning. Allow the appliance to cool before adding or removing parts, and before cleaning the appliance.
6. Do not operate any appliance with a damaged cord or plug. If the appliance malfunctions or has been damaged in any manner, unplug the appliance and return it to the nearest authorized service facility for examination, repair or adjustment.
7. The use of accessories or attachments not recommended by the appliance manufacturer may result in fire, electric shock or other injury to persons.
8. Do not use outdoors.
9. Keep the power cord away from hot surfaces and do not let the cord hang over the edge of tables or counters.
10. Do not place on or near a heated surface such as a gas or electric stove, or in a heated oven.
11. Extreme caution must be used when moving an appliance while it is hot.
12. Plug the cord into a household electrical outlet. To disconnect, turn the power control to OFF, then remove plug from wall outlet.
13. Do not use the appliance for other than intended use.
14. To protect against electrical hazard, unplug the cord before cleaning.

*Oversize foods, metal foil packages or utensils must not be inserted in the toaster, as they may involve a risk of fire or electric shock.

*A fire may occur if the toaster is covered or touching flammable materials, such as curtains, draperies or walls when in operation. Do not operate under wall cabinets.

*Do not attempt to dislodge food when the toaster is plugged into an electrical outlet.

SAVE THESE INSTRUCTIONS

THIS APPLIANCE IS FOR HOUSEHOLD USE ONLY.

This appliance is supplied with a short power cord to reduce the risk of becoming entangled in or tripping over. Extension cords may be used if care is exercised in their use. If an extension cord is used, the marked electrical rating of the cord should be at least as great as the electrical rating of the appliance, and a longer cord should be arranged so that it will not drape over the countertop or tabletop where it can be pulled on by children or tripped over unintentionally.

This appliance has a polarized plug (one blade is wider than the other). To reduce the risk of electric shock, this plug was designed to fit into a polarized outlet in only one direction. If the plug does not fit fully into the outlet, do not attempt to force it or modify it in any way. Simply reverse the plug and insert. If it still does not fit, contact a qualified electrician.

IMPORTANTES MESURES DE SÉCURITÉ

Pour utiliser des appareils électriques, il faudrait toujours prendre les précautions de base, y compris les suivantes.

1. Lisez toutes les instructions.
2. Ne touchez pas les surfaces qui peuvent être chaudes. Utilisez les poignées ou les boutons.
3. Pour éviter les chocs électriques, ne plongez pas le cordon, la fiche ou l'appareil portatif dans l'eau ou un autre liquide.
4. Surveillez bien les enfants s'ils utilisent un appareil ou s'ils se trouvent à proximité d'un appareil en marche.
5. Appareils portatifs. Débranchez l'appareil de la prise de courant quand vous ne l'utilisez pas avant d'enlever ou d'installer des pièces et avant de le nettoyer. Laissez l'appareil refroidir avant de le manipuler.
Appareils branchés à demeure. Assurez-vous que l'appareil est ARRÊTÉ quand vous ne l'utilisez pas avant d'enlever ou d'installer des pièces et avant de le nettoyer.
6. Appareils portatifs. Ne faites pas fonctionner l'appareil si le cordon ou la fiche sont endommagés, si l'appareil ne fonctionne pas correctement, s'il est tombé ou s'il a été endommagé. Confiez au service de réparation recommandé le plus proche tout examen, réparation ou réglage électrique ou mécanique de l'appareil.
7. L'utilisation d'accessoires non recommandés par le fabricant de l'appareil peut causer des blessures.
8. N'utilisez pas l'appareil à l'extérieur.
9. Ne laissez pas le cordon pendre par-dessus le bord d'une table ou d'un comptoir et assurez-vous que le cordon n'est pas en contact avec des surfaces chaudes.
10. Ne placez pas l'appareil près d'un brûleur à gaz allumé ou d'un élément électrique ou tension ou dans un four allumé.
11. Veuillez prendre toutes les précautions nécessaires lorsque l'appareil est déplacé alors qu'il est encore chaud.
12. Branchez le cordon dans une prise domestique. Avant de débrancher l'appareil, placez-le sur la position ARRÊT puis retirez la fiche de la prise murale.
13. N'utilisez l'appareil que pour la fonction à laquelle il est destiné.
14. Pour vous protéger contre une secousse électrique, pensez à débrancher l'appareil avant tout nettoyage.

*Les aliments de trop grande taille, les feuilles métalliques d'emballage et les ustensiles courants ne doivent pas être insérés dans le grille-pain au risque de provoquer un incendie ou une électrocution.

*Un incendie peut se produire si le grille-pain en cours de fonctionnement est recouvert ou en contact avec des matériaux inflammables tels que des rideaux, des tissus ou un mur. Ne pas utiliser le grille-pain dans une vitrine suspendue.

*Veuillez ne pas essayer de retirer les aliments insérés lorsque la fiche électrique est branchée.

CONSERVEZ CES INSTRUCTIONS

CET APPAREIL EST UNIQUEMENT À USAGE DOMESTIQUE.

L'appareil est équipé d'un cordon court afin de réduire les risques d'enchevêtrement ou de chutes sur le cordon. Des rallonges peuvent être utilisées à condition que toutes les précautions soient prises lors de leur utilisation.

Si vous vous servez d'une rallonge, sa puissance électrique indiquée devra être égale ou supérieure à celle de l'appareil; Le cordon devra être arrangé de manière à ce qu'il ne pende pas depuis le haut d'un comptoir ou d'une table où il serait à portée de main des enfants et où il occasionnerait des accidents dus à une chute ou à un enchevêtrement. L'appareil a une prise polarisée (l'une des lames est plus large que l'autre). Pour réduire les risques de chocs électriques, la prise s'insère dans un seul sens à l'intérieur d'une prise murale polarisée. Si la prise ne s'adapte pas correctement dans la prise murale, retournez-la. Si elle ne s'adapte toujours pas, contactez un électricien spécialisé. Ne cherchez en aucun cas à modifier la prise.

IMPORTANT SAFEGUARDS


Be sure to follow the instructions.


- These WARNINGS and CAUTIONS are intended to protect you and others from personal injury and household damage. To ensure safe operation, please follow carefully.


 **WARNINGS** Indicates risk of serious injury. ※¹

 **CAUTIONS** Indicates risk of injury or property damage if mishandled. ※² ※³

- ※¹ Serious injury includes loss of eyesight, burns (high and low temperature), electric shock, bone fractures, toxic reactions as well as other injuries severe enough to require medical care or extended hospitalization.
- ※² Injury indicates physical damage, burns or electric shock not severe enough to require medical care or extended hospitalization.

 **CAUTIONS** Indicates a warning or caution. A specific caution is indicated inside or near the triangle by sentences or illustrations.

 **PROHIBITED** Indicates a prohibited operation. A specific prohibited operation is indicated inside or near the circle by sentences or illustrations.

 **INSTRUCTIONS** Indicates a requirement or instruction that must be followed. A specific instruction is indicated inside or near the circle by sentences or illustrations.

- ※³ Property damage indicates material damage towards a home, furniture, or pets and animals.

WARNINGS



Do not modify the toaster. Only a repair technician may disassemble or repair this unit.

Attempting to do so may cause fire, electric shock or injury. Make any repair inquiries to Zojirushi Customer Service.



Do not immerse the toaster in water or splash it with water.

Doing so may cause short circuit or electric shock.



Do not plug or unplug the Power Cord if your hands are wet.

Doing so may cause an electric shock or injury.



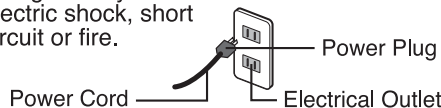
Do not use a power source other than 120V AC.

Use of any other power supply voltage may cause fire or electric shock.



Do not use the toaster if the Power Plug or Power Cord is damaged or if the Power Plug is loosely inserted into the electrical outlet.

Doing so may cause electric shock, short circuit or fire.



Do not use the toaster near flammable materials such as a curtain.

Doing so may cause fire.



Do not damage the Power Cord. Do not bend, pull, twist, fold, or attempt to modify the Power Cord. Do not place it on or near high temperature surfaces or appliances, under heavy items or between objects.

A damaged Power Cord can cause fire or electric shock.



Do not allow children to use the toaster unsupervised. Keep it out of the reach of infants.

Children are at risk of burns, electric shock or injury.



Do not put your fingers in the Slots of the toaster.

Doing so may cause burns or electric shock.



Never insert metal objects (such as knives, forks and others) into the Slots.

Doing so may cause electric shock.

- The illustrations used in this Operating Instructions may vary from the actual product you have purchased.

WARNINGS



Use only an electrical outlet rated at 15 amperes minimum, and do not plug other devices into the same outlet.

Plugging other devices into the same outlet may cause the electrical outlet to overheat, resulting in fire.



Insert the Power Plug completely and securely into the electrical outlet.

A loosely inserted Power Plug may cause electric shock, short circuit, smoke or fire.



If the blades or surface of the Power Plug become soiled, wipe them clean.

A dirty Power Plug may cause fire.

CAUTIONS



Do not touch hot surfaces during or immediately after use.

Touching hot surfaces may cause burns.



Do not operate the toaster with objects on top or underneath it.

The toaster or object may deform, melt or cause fire.



Do not use for other than intended purposes.



Unplug the Power Plug from the outlet when the toaster is not in use.

Leaving the Power Plug in an outlet may cause the insulation to become damaged, resulting in electric shock, short circuit or fire.



Do not place buttered breads or pastries with frostings in the toaster.

It may create a fire hazard.



Always unplug the toaster by holding the Power Plug, not by pulling the Power Cord.

Pulling the Power Cord to unplug the toaster may cause electric shock, short circuit or fire.



Do not force oversized or thick breads into the Slots.

It may catch fire or cause malfunction.



Please allow the toaster to cool down before cleaning.

Some parts may cause burns when hot.



Never leave the toaster unattended during operation.

The bread may catch fire.



Be sure to clean after every use.

Crumbs, if accumulated, may cause smoke and fire.



Do not place or use the toaster on unstable surfaces or on surfaces that are vulnerable to heat.

Doing so may cause fire.



Always set the Crumb Tray in place before use.

Otherwise it may cause fire.



If the Power Cord is damaged, it must be replaced by the manufacturer, its service agent or similarly qualified persons to avoid hazards.

Crumb Tray



IMPORTANT SAFEGUARDS

■ **Do not operate the toaster without breads in the Slots.**

■ **Do not operate with breads on top of the Slots.**

Doing so may deform the toaster or cause fire.

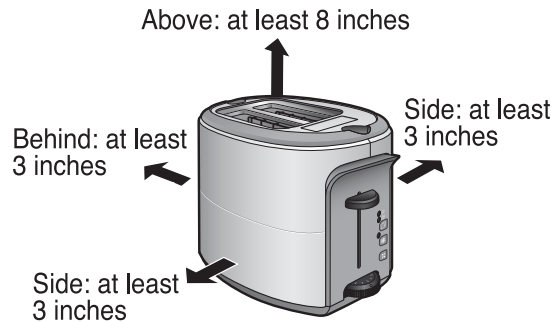
■ **Do not operate with the Cover on.**
Doing so may deform the toaster or cause fire.

■ **Do not use the Cover as a plate to warm other foods.**

Doing so may cause discoloration or deformation of the toaster.

KEEP AWAY FROM FLAMMABLES:

- Please keep the following distances between the toaster and its surroundings to prevent fire.
- The front of the toaster as well as one or both of its sides should not be against a wall or other objects. Please keep at least 12 inches of open space.
- When using on or near surfaces vulnerable to heat, keep a greater distance than those suggested in the illustration.



WHEN TOASTING BAGELS AND PASTRIES:

■ When toasting bagels

Please be sure to follow these instructions.

- Set the Browning Control at [1] and select Slice Selection 1 when toasting bagels.
- Slice bagels into two equal halves, between 5/8" and 1-1/4" thickness. Do not toast bagels without slicing.

■ When toasting pastries

Please be sure to follow these instructions as cracked or broken pieces may become lodged inside the toaster or fillings may leak out and cause breakdown of the toaster.

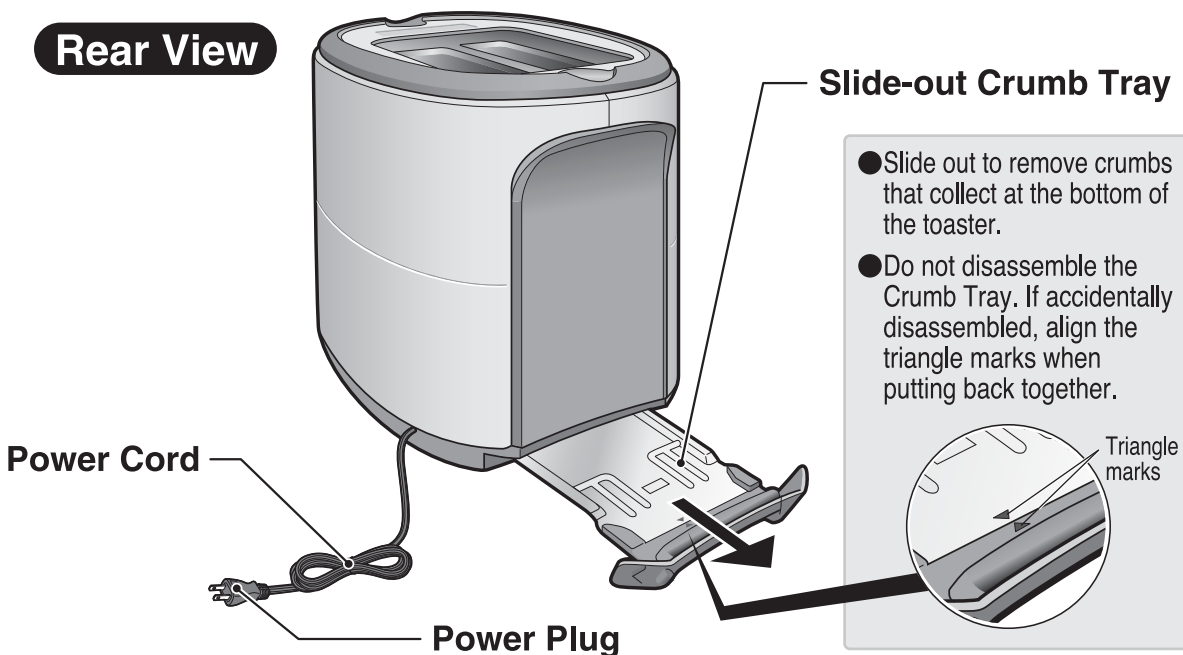
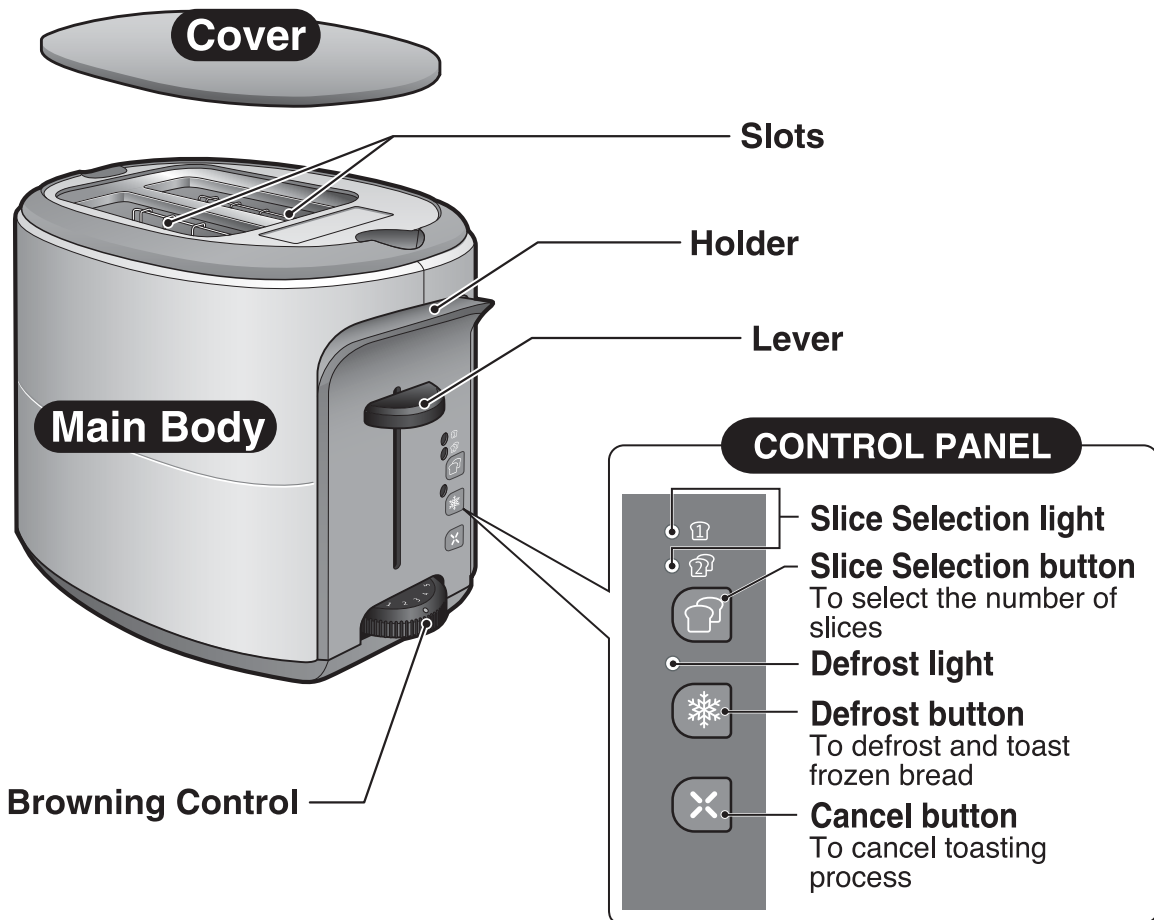
- Set the Browning Control at [1] and select Slice Selection 1 when toasting pastries.
- Remove all wrappers from the pastry before toasting.
- Do not toast cracked, broken or deformed pastries.

Be sure to clean after every use. Please stop using immediately if you see smoke or detect malfunction.

SPECIFICATIONS

Model No.	ET-XAC20
Capacity	120V AC 900W 60Hz
Length of Power Cord	4.6 feet (1.4m)
External Dimensions (including the Cover, in inches)	7.1 (W) x 11.6 (D) x 9.3 (H)
Weight (including the Power Cord Set and Cover)	Approx. 6.2lbs (2.8kg)

PARTS NAMES AND FUNCTIONS



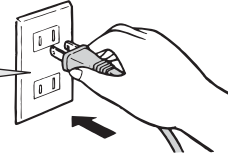
HOW TO USE

- This appliance is designed to toast sliced bread only. Do not use it for other than intended purposes nor should it be used for commercial purposes.
- You may see light smoke the first time you use the toaster. This is normal. The smoke is harmless and will soon disappear.

1 Insert the Power Plug into an electrical outlet.

- Be sure to insert the Power Plug securely.

*Do not plug other appliances into the same outlet
*15A minimum



2 Insert slice(s) of bread into the Slots.

- Insert the slice(s) horizontally if longer on one side.

TIPS ON TOASTING

■ Size of bread:

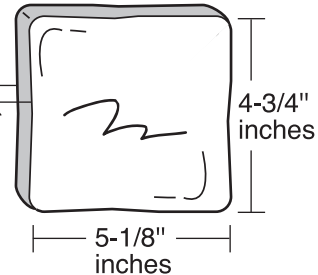
Thickness:

Between 5/8" and 1-1/4"

Size:

Approx. 4-3/4"(height) by 5-1/8"(width)

Thickness:
5/8"–1-1/4"
inches



- Large or small bread or bread with uneven surfaces (such as English muffins) may toast unevenly or become stuck inside the toaster. If the bread does not pop up fully, force the Lever up to remove the bread.
- When toasting a single slice of bread, use either Slots.
- Toasting results may vary depending on the thickness, condition (such as moisture level, length in freezer or bread with frost), and type of bread (rich in oils and fats or sugar), as well as the room temperature, humidity and voltage fluctuations. Make adjustments accordingly using the Browning Control.
- For even toasting, toast only one bread type and thickness at a time.
- Thin slices of bread may brown easily and could cause a fire hazard. Please take extra precautions.

3 Set the Browning Control.

Turn the (●) mark of the Browning Control to the desired position.

- Move the Browning Control toward [1] for a lighter browning, and [5] for darker.
- If you decide to change the Browning Control selection, change it within 30 seconds from pushing the Lever down. The change will not be activated if made after 30 seconds.
- Thickly cut pieces of bread (including bagels) will take longer to toast, sometimes significantly longer, since more moisture must be evaporated from the bread before toasting can occur. Very thick pieces may require two cycles.



4 Push the Lever down.

Push the Lever down until it locks in place. The Slice Selection light will turn on. The centering racks will adjust slot width automatically to hold the bread upright for even toasting.

- Remove the Cover during operation.
- The surface of the Main Body may become hot if bread is toasted consecutively.

Select any of these special toasting functions by pressing the appropriate button within 30 seconds of pushing the Lever down. The function lights will indicate which functions are selected.

■ Number of slices:

Press the Slice Selection button to choose the number of slices. The Slice Selection light should be on indicating the number of slices.

- Choose either 1 or 2 slices of bread. The default setting is 1 slice.
- The change in selection will not be activated if it is made after 30 seconds.

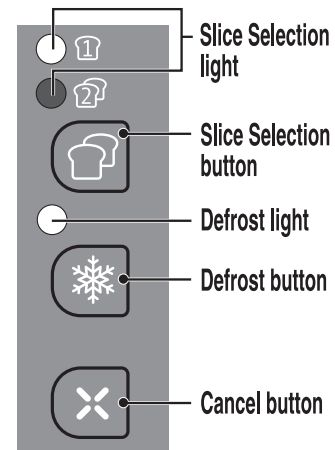
■ Defrost button:

The Defrost button is designed to defrost the bread before toasting. The Defrost light turns on to indicate the feature is activated.

- To cancel, press the Defrost button again. The Defrost light turns off to indicate it has been cancelled.
- The change in selection will not be activated if it is made after 30 seconds.

■ To stop cycle:

If you wish to stop the cycle before it is finished, press the Cancel button to interrupt.



- These special toasting functions cannot be activated unless the Lever is pushed down.

5 Toasting completes.

Once the toasting cycle completes, the toaster will turn off automatically and the bread will pop up. Push the Lever up manually and remove the bread.

- When toasting consecutively, wait at least one minute before toasting bread stored at room temperature, and at least 2 minutes for frozen bread, for optimum performance.
- Thinly sliced bread may jump out of the Slots. Please take extra precautions.
- Always unplug the Power Plug after use.

■ Estimated toasting time:

Bread	Number of Slices	
	1 slice	2 slices
Room Temperature	2-4 minutes	
Frozen	4-6 minutes	

- The estimated time may vary depending on the bread, room temperature and humidity.

CLEANING AND MAINTENANCE

- Always unplug the toaster from the electrical outlet and allow it to cool completely before cleaning.

NOTES

- Clean after every use.
- Do not immerse the toaster in water or splash it with water. It may cause short circuit or electric shock.
- Do not use abrasive cleansers or brushes (nylon/metal). It may damage the surface of the toaster.
- Do not use thinner, benzene, bleach or any other cleaning agents other than mild kitchen detergent.
- If using a chemically treated cloth, do not wipe the surface of the toaster strongly or allow the cloth to contact it for an extended period of time. It may damage the surface of the toaster or cause a chemical reaction.
- Do not use a dishwasher for cleaning or drying.

Cover / Crumb Tray:

- ① Wash with mild detergent and rinse.
- ② Wipe off moisture with a dry cloth.

- Place the Crumb Tray in the Main Body after every cleaning. Press it firmly until it locks into position.
- It is recommended that the Crumb Tray be emptied after each use.
- Please take precautions as the Crumb Tray may be hot immediately following a toasting cycle. It may cause burns to persons or surfaces.

Power Cord / Power Plug:

Wipe clean with a soft dry cloth.

Main Body:

- | | |
|-----------------|---|
| Exterior | <ol style="list-style-type: none">① Soak a soft cloth in mild detergent and water, wring out all excess moisture and wipe clean.② Wipe moisture off with a soft dry cloth. |
|-----------------|---|

Interior	<p>Lightly shake the Main Body to allow crumbs stuck inside the toaster to fall to the Crumb Tray.</p>
-----------------	--

- Do not turn the toaster upside-down and shake. Doing so may cause breakdown or damage to the toaster.
- Never insert any hard or sharp instruments into the Slots, as this could damage the toaster and cause a safety hazard.

TROUBLESHOOTING GUIDE

• Please check the following points before calling for service.

Condition	Cause	Remedy	
The Lever does not lock in place when pushed down.	The Power Plug is not plugged in completely.	Plug in securely.	
Toasting function buttons do not work.	The Lever is not pushed down and locked in place.	Select the buttons after pushing the Lever down.	
	More than 30 seconds have passed after pushing the Lever down.	Make changes to toasting functions within 30 seconds.	
Bread does not pop up after the toasting cycle completes.	Bread is deformed.	See p.8, "TIPS ON TOASTING" on the size of bread.	
	Bread is too large or too small.		
	Bread is too thick.		
Bread jumps out.	Thin bread may pop out upon completion of toasting cycle.	This is not a malfunction.	
Bread does not toast well.	Too dark.	The bread is dry.	See p.8, "TIPS ON TOASTING"
	Too light.	The bread is moist.	
	Too dark or too light.	Browning Control is not set appropriately.	Adjust the Browning Control accordingly.
		The Browning Control was changed more than 30 seconds after pushing the Lever down.	Make any changes within 30 seconds.
	Toast does not come out good.	Bread was toasted consecutively.	Wait at least one minute before toasting bread stored at room temperature, and at least 2 minutes for frozen bread before toasting the next bread.
		The setting of Browning Control, Defrost or Slice Selection button is incorrect.	Check that the setting is correct.
		Bread is deformed.	See p.8, "TIPS ON TOASTING"
		Bread has frost.	
	Bread was toasted twice.	Toasting bread twice will lend it a darker color or may cause it to burn.	
	The heating element turns off.	The heater automatically turns on and off for optimum toasting.	This is not a malfunction.
Heating elements for both Slots turn on although 1 slice of bread is selected.	Both heating elements turn on even when toasting 1 slice of bread.		
All lights are blinking.	It is a malfunction of the thermal sensor.	Please call for service.	



www.zojirushi.com

ET-XAC ©®