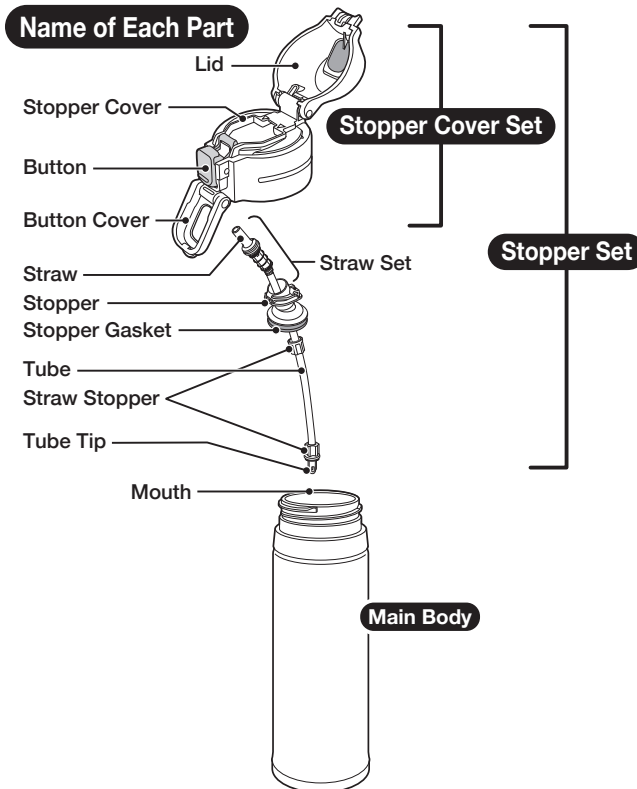


Name of Each Part



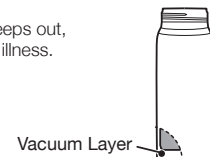
Please read these instructions before use, and keep for future reference.

SD-CS(E/K) / C

Important Safeguards: ● Please follow these instructions to prevent deterioration and discoloration of beverages, as well as malfunction and staining of the product.

Keep out of reach of infants and small children.
There is a risk of injury.

Do not use if water enters the interior of the Vacuum Layer.
If the internal water seeps out, drinking it may cause illness.



Never fill with hot beverages.

- The beverage may splash, leading to scalding.
- Accidental ingestion may cause scalding or choking.

Do not place near heat sources such as gas stoves, ovens and heaters.
Doing so may cause deformation or discoloration.

Do not drink out of the bottle while driving.
Doing so may stain the interior of the car or clothes. Attempting to use while driving may distract the driver and may lead to serious accidents.

Do not press the Button while the bottle is close to your face.
The Straw or the Lid may pop up and hit your face and could be dangerous.

Do not hold or carry the bottle by the Stopper Set, Button Cover, Lid, or Straw.
Fingers may become pinched or you may drop the bottle, causing injuries. In addition, the Lid, Button Cover, or Straw may become damaged.

Do not disassemble the Main Body.

Do not heat in a microwave.
Doing so may cause sparks or deform or discolor the bottle.

Do not place near open flames (from gas stoves, etc.), on top of electric heaters or IH hot plates, or other IH cooking devices.
Doing so may cause a fire or malfunction.

Please avoid filling the bottle with the following:

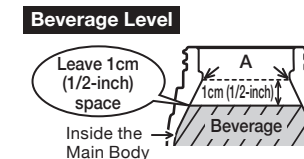
- **Dry ice and carbonated drinks:**
The pressure inside the Main Body may cause contents to spill out, resulting in injuries and damage to the Stopper Set.
- **Dairy products and fruit juice:**
If left inside for a long period of time, contents may spoil and produce gas that raises the pressure inside the Main Body, causing contents to spill out or the Stopper Set to burst, resulting in injuries.
- **Liquids containing salt such as soup:**
Although the liner is made of 18/8 stainless steel and is nonstick coated, salt may cause rust resulting in loss of cold retention.
- **Fruit pulp and tea leaves:**
May become caught in the Stopper and cause contents to spill.

Consume beverages within the same day.
Not doing so may cause spoilage. In addition, if left inside for a long period of time, spoiled beverages may produce gas, raising the pressure inside the Main Body and causing the Stopper Set to burst or beverages to spill. This may result in injuries and damage to the Stopper Set.

Please do not use for purposes other than keeping beverages cold.
This is for storing cold beverages and keeping them cold.

Warnings and Cautions:

- **Do not attach parts other than those specifically designed for this product.**
Doing so may cause leaks or breakage.
- **Leave 1cm (1/2-inch) room on top when filling the bottle.**
Overfilling may cause contents to overflow when the Stopper Set is attached. Beverages may also leak out.



- **Avoid dropping or hitting against hard surfaces.**
Damage to the plastic or stainless steel surface of the bottle may reduce its ability to retain cold.
- **Always clean thoroughly after use.**
Failing to do so may cause malfunctions such as rusting or perforation, or cause contents to spoil.

- **Do not remove the sticker on the bottom of the Main Body.**
Doing so may cause malfunctions such as rusting or perforation.



- **Do not damage the nonstick coating inside the Main Body.**
Scratches may cause rust, holes or other problems.

Warnings and Cautions: continued

- **Do not force large ice cubes in.**
Forcing or hitting the ice cubes may cause deformation, leaks, or malfunction.
- **Always clean the Stopper Set (Lid, Stopper, Stopper Gasket, Straw Set, Straw Stopper, Tube, and Tube Tip) thoroughly after use.**
Not doing so may cause decay, mold, odor or discoloration. It may also cause leaks.
- **Use only with the Stopper Set securely attached. Always close the Lid and Button Cover after use.**
Leaks may cause stains on your car, clothes, bags, etc.
- **Do not place cans, bottles, etc. inside the Main Body.**
These may deform or damage the Main Body.
- **Do not let small children bite or chew on the Straw.**
This may deform the Straw, resulting in leakage.
- **If the product is filled with a cold beverage under humid conditions, condensation may form on the Stopper Set. Stand the product upright when placing it in bags.**
- **Always make sure that the Straw Set, Stopper, Stopper Gasket, Tube, Straw Stopper, and Tube Tip are attached.**
Leaks may cause stains on your car, clothes, bags, etc.
- **Do not tilt the Main Body when the Lid is open.**
Leakage may stain clothing.
- **Store the Bottle upright when carrying inside bags to prevent beverages from spilling.**
- **Do not rub the design on the outside of the bottle strongly.**
Doing so may cause the design to come off.



● The illustrations used in this instruction manual may vary from the actual product you have purchased.

How to Use: ● Follow the instructions for care and wash the Stopper Set, the inside and outside of the Main Body thoroughly before use.
● When you first use the product, there may be a plastic smell. However, this will become less noticeable with use.

- Do not attach or remove the Stopper Set under the following conditions:
 - With the Lid or Button Cover open
 - While holding the Button Cover

1 Remove the Stopper Set from the Bottle.
Remove the Stopper Set from the Bottle by turning it counterclockwise as illustrated.

2 Fill the Bottle with a cold beverage.

Beverage Level

Leave 1cm (1/2-inch) space below the rim (part A)

For better performance, precool the Main Body with a small amount of cold water for about one minute.

3 Set the Stopper Set securely.
With the Lid and Button Cover closed, turn the Stopper Set clockwise as illustrated to attach it securely. The Lid Set should be set by adults.

- Confirm that the Stopper Gasket is correctly attached before using. (If not correctly attached, the beverage may leak. See "How to Assemble the Stopper Set" on p. 10-13.)
- Attach the Stopper Set properly and turn the Bottle upside down to make sure contents do not leak. If they do leak, clean the product (see "How to Take Care of Your Bottle" on p. 14-15) and start from "How to Use" 2.

4 Open the Lid and drink the beverage.

① With the Main Body upright, open the Button Cover as illustrated.

② Press the Button to open the Lid and drink the beverage from the Straw.

The Lid Cover may open slightly.

The Lid will open.

5 When you are done, close the Lid.

① With the Bottle standing upright on a flat surface, close the Lid until it clicks.

② Close the Button Cover securely until it clicks.

How to Disassemble the Stopper Set

- See p. 10-13 for how to assemble.

1 Remove the Stopper.
With the Lid open, hold the Stopper Set as illustrated, and push in the Tabs to remove the Stopper.

Do not remove this gasket.

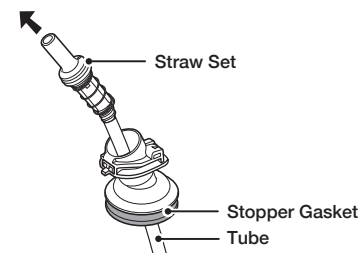
2 Remove the Tube Tip.
Turn the Straw Stopper as illustrated to remove the Tube Tip.

Be careful not to lose the Straw Stopper or the Tube Tip.

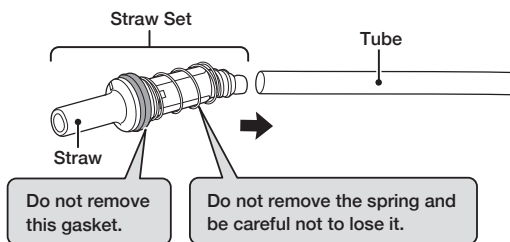
3 Remove the Straw Stopper.
While pushing the end of the Straw, turn the Straw Stopper as illustrated to remove it.

Be careful not to lose the Straw Stopper.

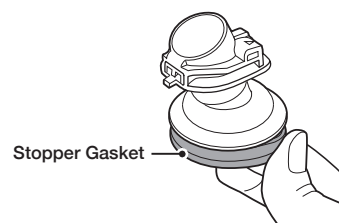
4 Pull the Straw Set as illustrated to remove.



5 Take the Tube out of the Straw Set.



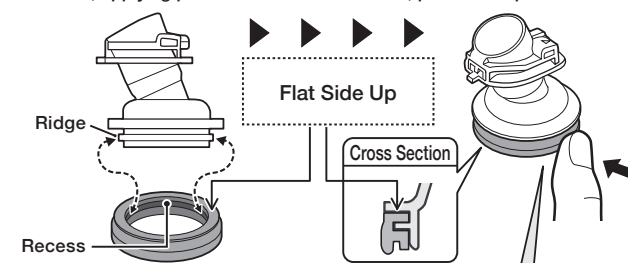
6 Remove the Stopper Gasket.



● Be sure to attach the Stopper Cover Set, Stopper, Stopper Gasket, Straw Set, Straw Stopper, Tube, and Tube Tip correctly to prevent malfunction or leaking of beverages.

1 Attach the Stopper Gasket.

Line up the recess in the Stopper Gasket with the ridge on the Stopper, and, applying pressure from the outside in, push it into place.

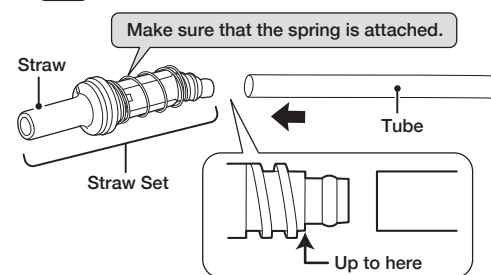


Be careful with the top and the bottom of the gasket and be sure to set correctly. Not doing so may cause beverages to leak.

Push along the rim with your finger.

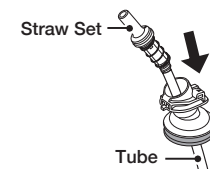
2 Attach the Tube to the Straw Set.

Attach the Tube so the end face touches the Straw Set. (See **Note** on p. 13.)

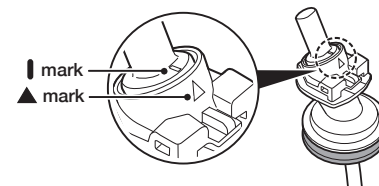


3 Insert the Straw Set into the Stopper.

① Insert the Straw Set into the Stopper from above.



② Align the ▲ part of the Stopper and the ▼ mark of the Straw, and press the Straw in all the way.

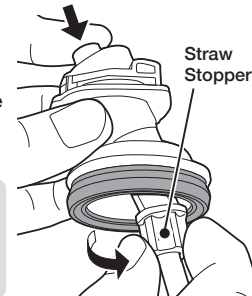


4 Attach the Straw Stopper.

① Insert the Straw Stopper into the Tube and move it up to the Straw Set.

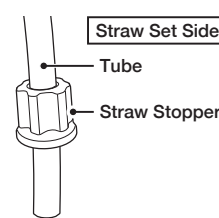
② While pushing in the end of the Straw, turn the Straw Stopper as illustrated to attach it.

- Make sure not to turn the Straw Stopper too forcefully. (Doing so may cause it to deform.)
- Attach the Straw Stopper as illustrated.



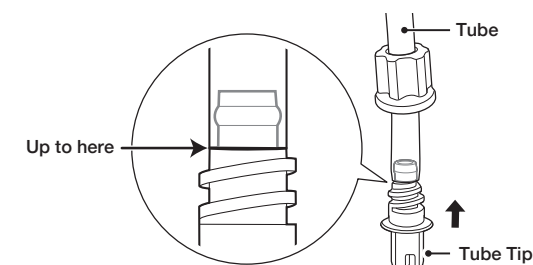
5 Attach the Tube Tip.

① Pass the Straw Stopper through the Tube.

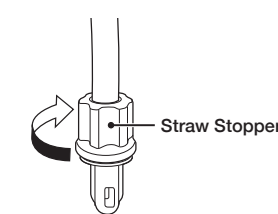


Attach the Straw Stopper as illustrated.

② Attach the Tube Tip so the end face touches the Tube.



③ Turn the Straw Stopper as illustrated to attach it.



How to Take Care of Your Bottle:

- Clean the product after each use to prevent odors and mold, and to keep the product sanitary.
- Always disassemble the product before cleaning. (See "How to Disassemble the Stopper Set" on p. 8-9.)

Outside Main Body Stopper Set

- ① Wash with warm water and mild dishwashing liquid using a soft sponge.
 - ② Rinse, shake a few times and wipe dry.
- Take apart the Stopper Set before washing and drying.
 - Use a small brush sold in stores if necessary.

Inside Main Body

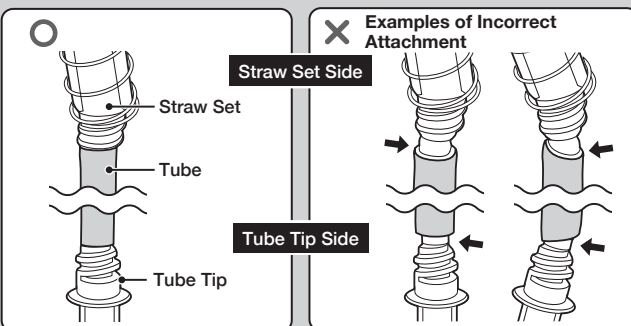
- ① Wash with a sponge brush or similar dipped in warm water and mild kitchen detergent.
 - ② Then rinse and wipe moisture out to dry.
- Keeping the inside clean will help prevent odors.

Notes for Handling the Product

- Do not use a dishwasher or dish-dryer. Do not boil to sanitize.
- Do not clean using paint thinner, metal wire scrub brushes, scrubbing brushes that include abrasive cleaners, polishing powders, cleansers, melamine sponges, or any similar items.
- Do not use chlorine-based bleach. In addition, do not use any kind of bleach, even non-chlorine-based, to clean the outside of the Main Body. It may damage the paint, print, or stickers on the Main Body.
- The product is washable, but do not soak it in water for an extended period of time.
- Wipe moisture off thoroughly to prevent water stains or rusting.
- If the product is not going to be used for an extended period, wash thoroughly with cold or lukewarm water and dry well. Store the product away from high temperatures and humidity. High temperatures and humidity may damage the product.

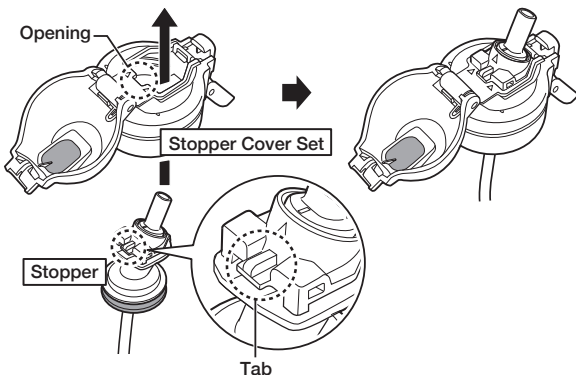
Note Attaching the Tube

When attaching the Straw and the Tube Tip to the Tube, attach them firmly so that the end face of the Tube touches them.



6 Attach the Stopper.

Align the opening of the Stopper Cover Set and the tab of the Stopper, and push the Stopper up to attach securely.



SPECIFICATIONS:

STAINLESS STEEL VACUUM COOL BOTTLE

Model No.	Capacity	Weight	Cold Retention (Below)
			6 hrs.
SD-CS50	0.52 liter (18 oz.)	0.27 kg (10 oz.)	9°C(48°F) @ 6 hrs.

Cold Retention Testing Conditions:
At a room temperature of 20°C±2°C (68°F±4°F), the Main Body is filled with cold water up to the level illustrated in **Beverage Level** on p. 3, and left standing in an upright position.
For cold retention, once the cold water reaches 4°C±1°C (39°F±2°F), the temperature is measured after 6 hours.

Materials:	Inner Liner	Stainless Steel (Nonstick Coated)
	Exterior	Stainless Steel (Acrylic Resin Painted)
	Mouth	Polypropylene
	Stopper	Polypropylene
	Straw	Polypropylene
	Lid	Polypropylene
	Tube Tip	Polypropylene
	Straw Stopper	Polypropylene
	Tube	Silicone
	Gasket	Silicone

Manufacturer: Zojirushi Corporation
Address: 1-20-5 Tenma, Kita-ku, Osaka 530-8511, Japan

To Remove Rust Spots and Water Stains:

You may find rust spots or water stains caused by impurities in the water. To remove these stains, fill the bottle with hot water with 10% vinegar and let it stand for 30 minutes to an hour without attaching the Stopper Set, then wash the interior thoroughly. (See "How to Take Care of Your Bottle" on p. 14, 15.)

To Remove Coffee and Tea Stains:

To remove coffee and tea stains from the interior and the Stopper Set, we recommend using Zojirushi's cleaning detergent SB-ZA01E. (Sold separately.)

- Always remove the Stopper Set when using SB-ZA01E."

We take care in only using materials that are safe and hygienic for food contact. However, if plastic parts become damaged or its surface becomes rough, please replace them for optimum performance. The Straw Set, Straw Stopper, Tube, Tube Tip, Stopper and Stopper Gasket may need to be replaced due to time and wear. Please check them about once a year. When replacing parts, please record the model number and part name beforehand. Then contact either the store where you purchased the product or Zojirushi Customer Service. Replacement parts may be available for an additional charge.