

Instruction Manual

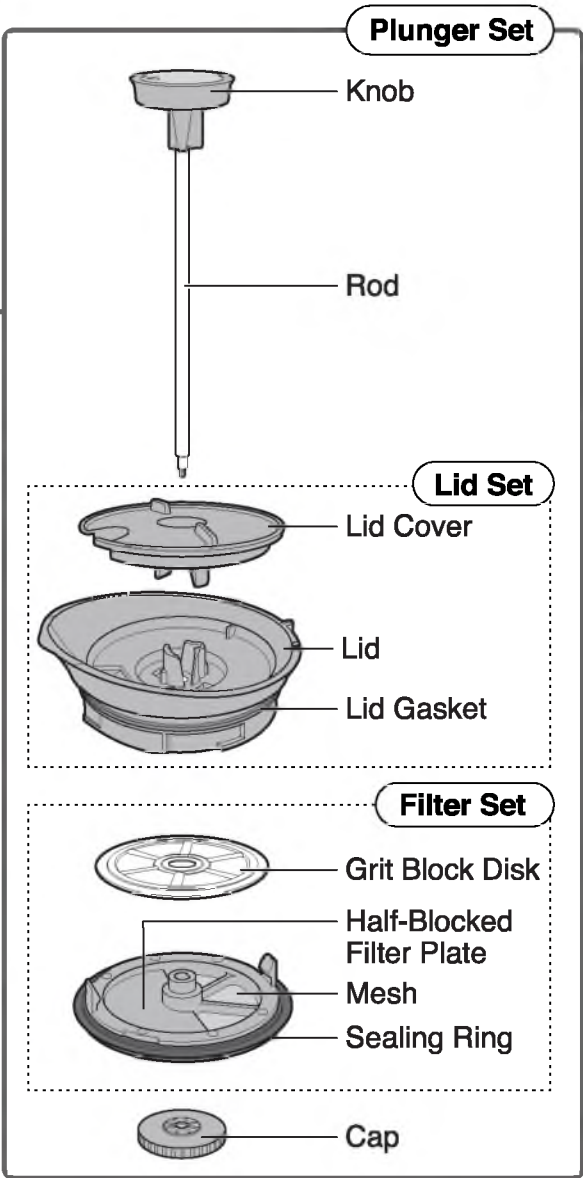
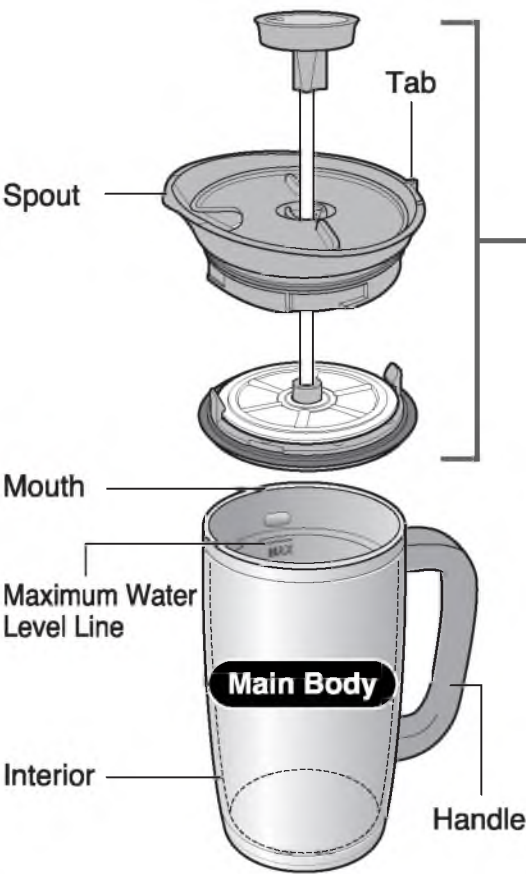
FRESH BREW VACUUM INSULATED STAINLESS FRENCH PRESS

Model No. **SK-XAE10**

Please read these instructions before use,
and keep for future reference.

● **Be sure that all parts are attached firmly before each use.**

Name of Each Part



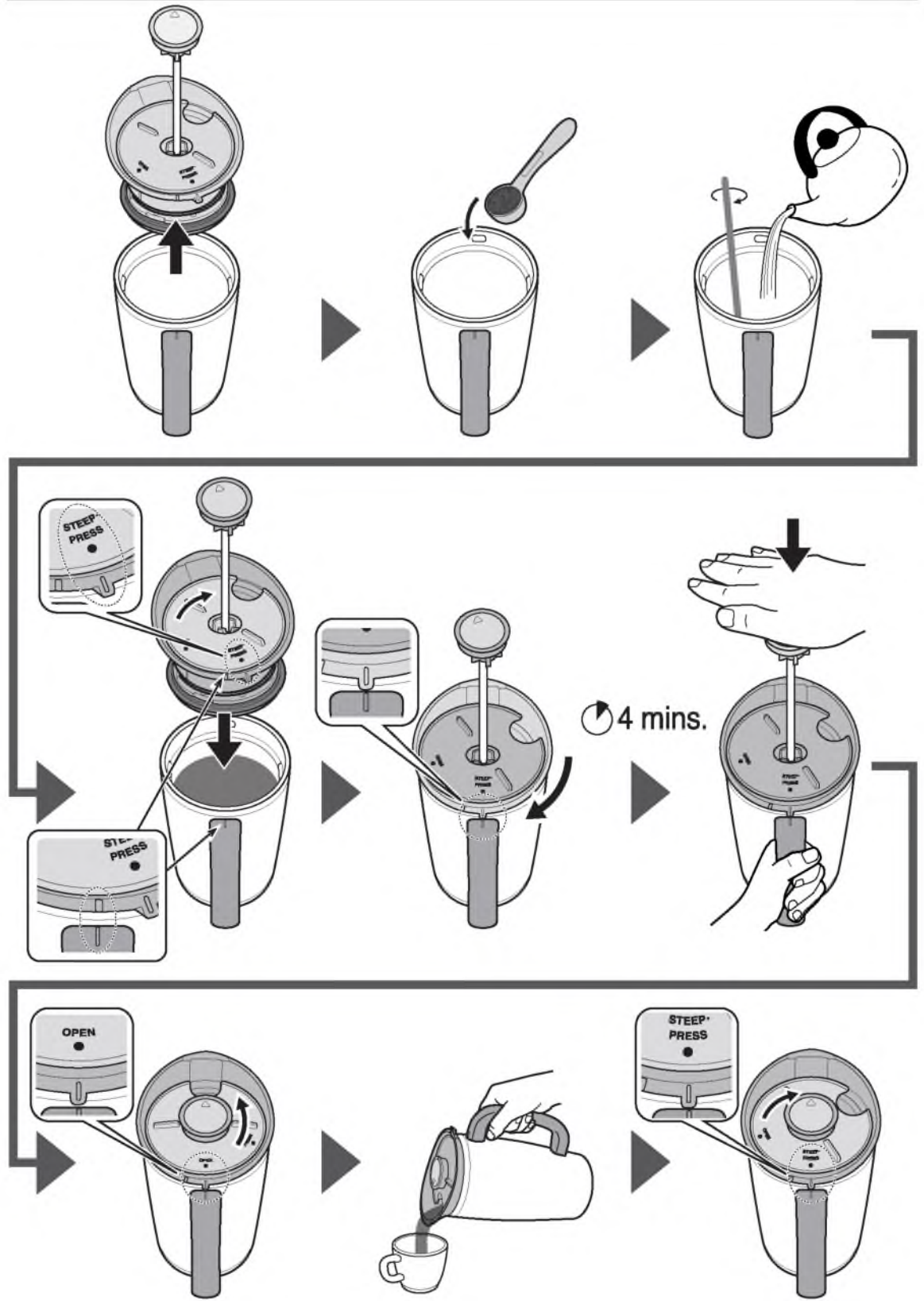
Accessory

Coffee Scoop



- **This product is not leak proof.**
- The illustrations used in this instruction manual may vary from the actual product you have purchased.

How to Brew French Pressed Coffee



Important Safeguards

Please follow these instructions to prevent scalding, deterioration and discoloration of beverages, and malfunction or staining of the product.

Keep out of the reach of infants and small children. Do not allow them to play with this product.

Mishandling may cause injury or scalding.

Do not use in direct sunlight or near open flames from sources such as stoves.

Doing so may cause scalding, deformation or discoloration of the product.

Do not place near open flames (from gas stoves) or on top of electric heaters or IH cooking devices.

Doing so may cause fire or damage.

Only use the product on a dry, flat, stable surface where it will not slip.

This product uses hot water. Always take sufficient precautions against scalding when using it.

Do not use the product for any purpose other than brewing coffee.

Do not use the product if it is damaged or deformed.

Do not use the product if its thermal insulation performance has deteriorated.

The outside of the Main Body will become very hot when filled with hot beverage and may cause burns.

Do not disassemble to repair.

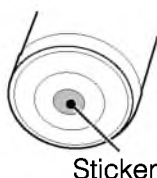
Doing so may cause damage or an accident.

Do not heat in a microwave.

Doing so may cause sparks, deform or discolor the product.

Never remove the sticker on the bottom of the Main Body.

Doing so may cause rust, holes, or other damage.



Do not allow a hot kettle to touch the Mouth of the Main Body.

Doing so may cause burns if the product is tipped over. It may also cause scratches or deformation of the product.



Hold the handle firmly when carrying the product.

- **Do not tilt the product or carry it on its side.**

Doing so may cause burns or stains.

- **Do not carry the product by the Knob or Lid.**

The product may fall and cause scalding or injury.

When the product is filled with a beverage, do not turn it over or lay it on its side.

Even if the Spout is closed, the beverage may leak and cause scalding or stains.

Clean the Main Body and Plunger Set before using the product for the first time.

Only use medium-coarse or coarse coffee ground.

If you use fine coffee grounds, the pressure inside the Main Body will rise and the beverage may spurt out, causing scalding, injury, or damage.

Do not fill the Main Body above the Maximum Water Level Line.

The beverage may overflow when the Plunger Set is inserted if filled above the Maximum Water Level Line on the Main Body. It may also leak afterwards.

Maximum Water Level Line

MAX

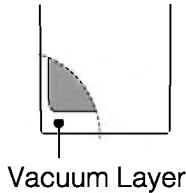
Beverage Level



Important Safeguards

Please follow these instructions to prevent scalding, deterioration and discoloration of beverages, and malfunction or staining of the product.

<p>Use the product with the Lid Set attached securely, and close the Spout after use. Hot beverages may leak and cause scalding. It may also cause stains.</p>	<p>Do not fill the product with a beverage while the Plunger Set is inserted. The beverage may overflow and cause scalding.</p>
<p>Follow the points below when pushing down the Knob.</p> <ul style="list-style-type: none"> ● Do not force down the Knob. Doing so may cause scalding or injury. ● Make sure that the Handle is aligned with STEEP · PRESS on the Lid Cover, then slowly push down the Knob. Not doing so may cause scalding, injury or damage. 	<p>Do not leave beverages in the product over a long period. Doing so may cause contents to spoil, degenerate, or produce an odor.</p>
<p>Do not drink directly from the product. Doing so may cause scalding. Pour the beverage into a cup before drinking.</p>	<p>Immediately after each use, thoroughly clean the Plunger Set and the Interior. Then, wipe off any moisture and allow to dry well. Leaving them dirty after use may lead to damage such as rust or holes.</p>
<p>Do not use if water can be heard inside the Vacuum Layer. This may reduce the product's ability to retain heat and cause scalding. Also, if the water seeps out from the interior, drinking it may cause health problems.</p>	<p>Do not attach parts other than those specifically designed for this product. Doing so may cause scalding due to the beverage leaking. It may also cause damage or stains.</p>
<p>Always use the product with the Lid Gasket and Sealing Ring attached. The beverage may leak and cause scalding or stains. It may also cause stains.</p>	<p>Do not abruptly tilt the product when pouring. The beverage may gush out and cause scalding.</p> <p>Do not shake the product when filled with beverage. Doing so may cause scalding or injury.</p>



Warnings & Cautions

Avoid dropping or hitting the product against hard surfaces.

Damage to plastic parts or the surface of the Main Body may reduce its ability to retain heat.

Follow the points below when cleaning the product.

- **Do not use chlorine bleach.**
Doing so may cause rust, holes, or other damage.
- **Do not boil the product or use a dishwasher or dish dryer.**
Doing so may cause scratches, rust, deformation, or other damage.

Do not scrape or rub the design on the Main Body with excessive force.

The design may come off.

Do not place cans or bottles inside the Main Body.

Doing so may cause deformation or damage the product.

Never fill the product with the following:

● **Ice or other hard substances**

When pushing down the Knob, they may come in contact with the Mesh and damage the Half-Blocked Filter Plate.

● **Milk, dairy beverages, fruit juice, syrup, etc.**

Contents may spoil. In addition, if left for a long time, spoilage may produce gases that cause the pressure inside the Main Body to rise and the beverage to spurt out.

● **Fruit pulp or tea leaves**

They may clog the product or leak, causing scalding or damage.

● **Dry ice or carbonated drinks**

The pressure inside the Main Body will rise and the beverage may spurt out, or the Plunger Set may become damaged and fly off.

● **Liquids high in sodium such as soup or Kobu-cha**

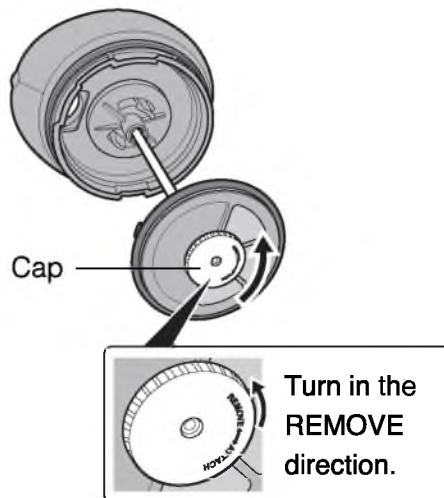
Although the liner is made of 18/8 stainless steel, salt could cause rust, resulting in loss of thermal insulation.

How to Disassemble / Assemble Parts

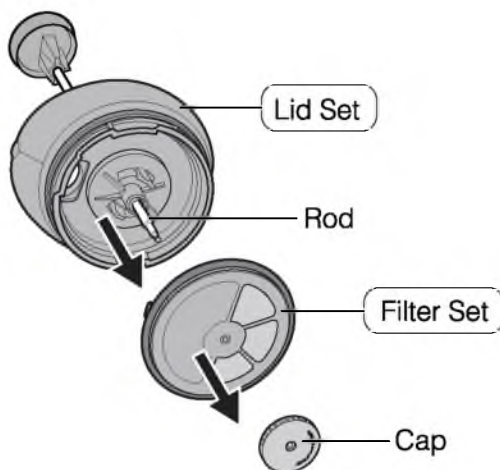
Plunger Set

To Disassemble

- 1 Remove the Cap by turning in the REMOVE direction.

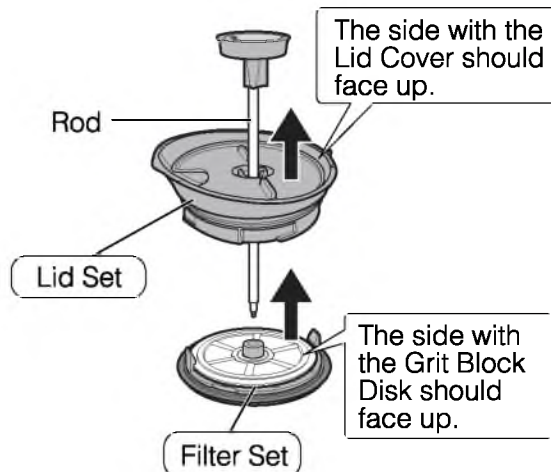


- 2 Pull the Filter Set and Lid Set off of the Rod.



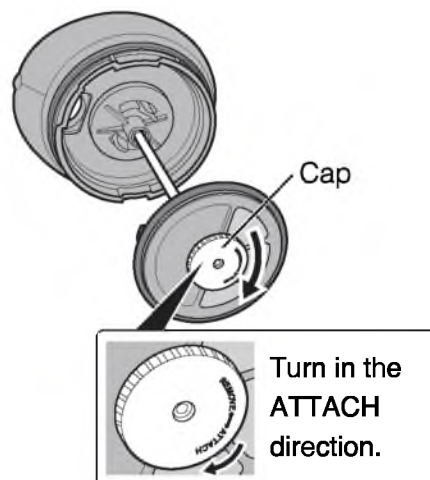
To Assemble

- 1 Insert the Rod through the Lid Set and then the Filter Set.



- 2 Turn the Cap in the ATTACH direction.

- Twist the Cap all the way so that it is securely locked in place.

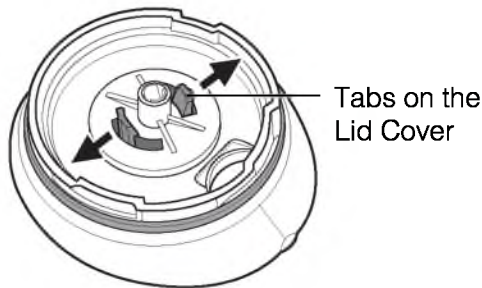


How to Disassemble / Assemble Parts (continued)

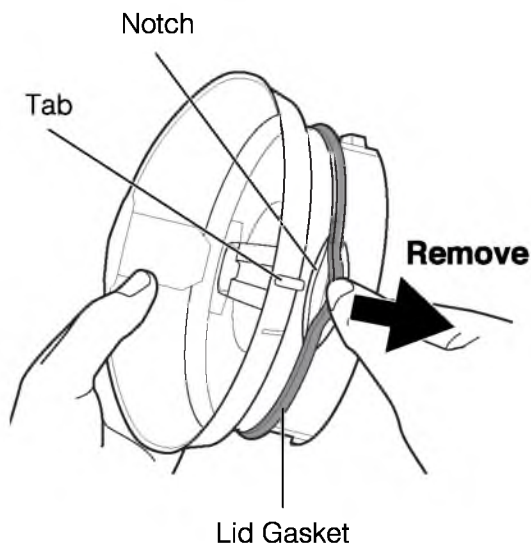
Lid Set

To Disassemble

- 1 Push the Tabs on the underside of the Lid Cover outward to remove the Lid Cover.

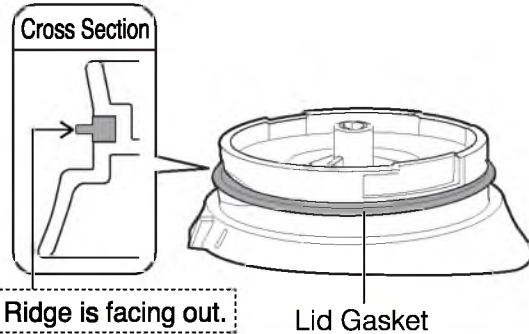


- 2 Place your finger on the Notch near the Tab and pull in the direction of the arrow as shown in the illustration to remove.

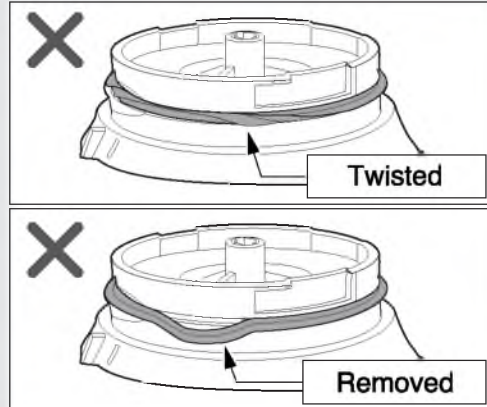


To Assemble

- 1 Attach the Lid Gasket with the Ridge facing out.

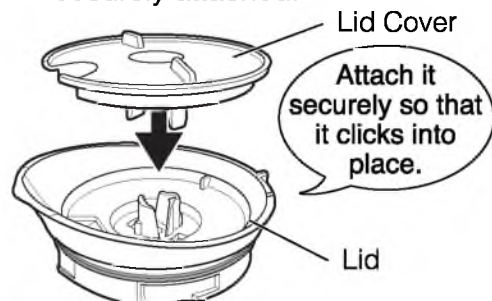


- Attach the Lid Gasket correctly. (Hot beverages may leak and cause scalding.)



- 2 Attach the Lid Cover to the Lid.

- Make sure that the Lid Cover is securely attached.



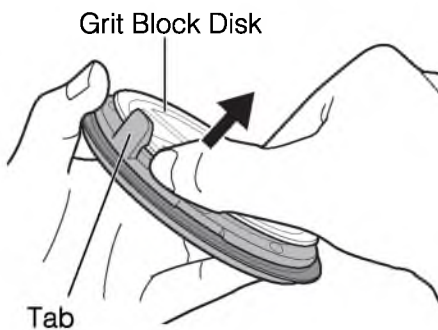
How to Disassemble / Assemble Parts (continued)

Filter Set

To Disassemble

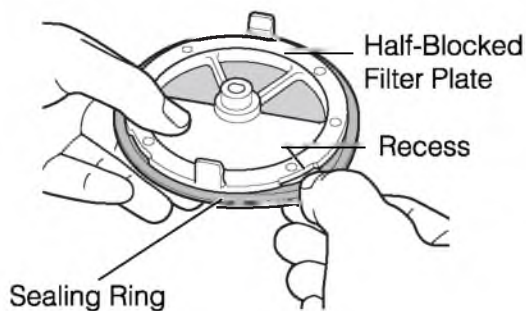
- ① **Insert your finger between the Half-Blocked Filter Plate and Grit Block Disk to remove the Grit Block Disk.**

- You can remove it more easily if you gently press the Tabs outward.



- ② **Pinch the Sealing Ring at the recess of the Half-Blocked Filter Plate and remove the Sealing Ring.**

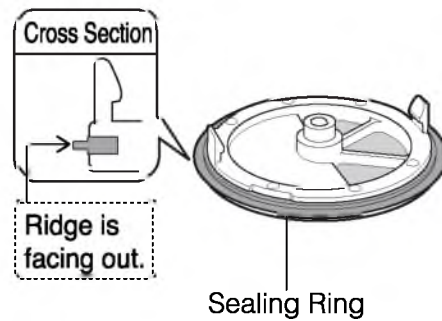
- Do not push the Mesh.
- The Sealing Ring may be oily after use. Use a cloth to easily pinch and remove.



To Assemble

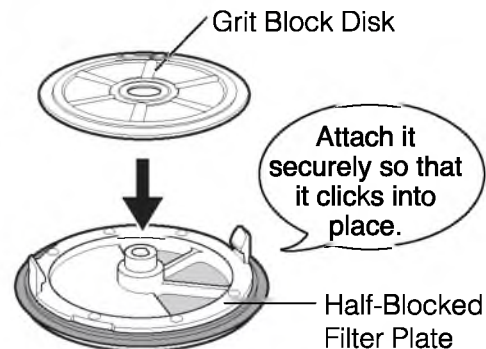
- ① **Attach the Sealing Ring with the Ridge facing out.**

- Attach the Sealing Ring correctly.



- ② **Attach the Grit Block Disk to the Half-Blocked Filter Plate.**

- Attach the Grit Block Disk so that the side with the projections is on top.



Using the French Press

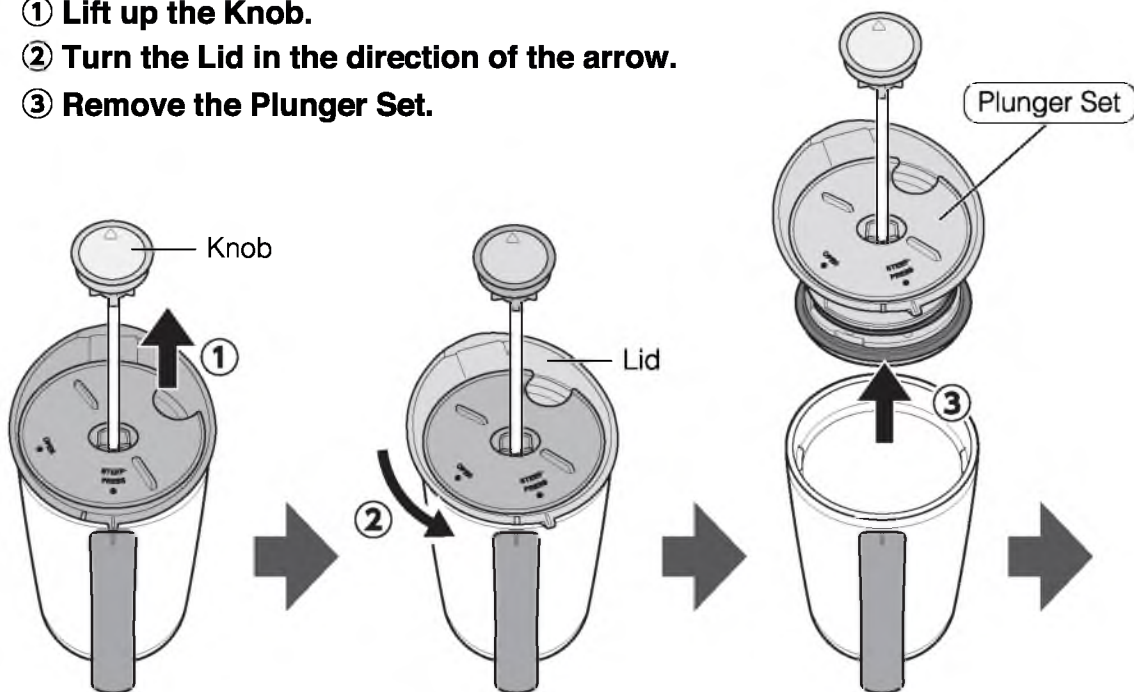
- Thoroughly clean the Plunger Set and Interior with lukewarm water before use.

- The product may initially have a plastic odor, but this will fade with use.
- Make sure that all the parts of the Plunger Set are correctly attached before use.
- Keep the Main Body upright when carrying the product.
- The Spout has a sharp lip to prevent dribbling and assure a clean pour. Please be careful not to touch the Spout when turning the Lid.



1 Remove the Plunger Set

- ① Lift up the Knob.
- ② Turn the Lid in the direction of the arrow.
- ③ Remove the Plunger Set.



NOTE

The product will retain heat more effectively if you preheat it for about 1 minute by filling the Main Body with hot water in advance.
(Do not fill the Main Body above the Maximum Water Level Line.)



Using the French Press (continued)

2 Add coffee grounds and hot water

- ① Add coffee grounds (medium-coarse or coarse grind) to the Main Body using the supplied Coffee Scoop.
 - ② Add hot water at a temperature of approx. 200-203°F (approx. 93-95°C). Stir with a stirrer or similar to make sure the coffee grounds are steeped in hot water.
- Do not add hot water above the Maximum Water Level Line.
 - If filling to the Maximum Water Level Line, first fill until slightly below the Maximum Water Level Line and stir with a stirrer or spoon. Then, add hot water to the Maximum Water Level Line.
 - If you stir with too much force, coffee grounds will stick to the Interior. In this case, push the coffee grounds back into the water using a spoon.

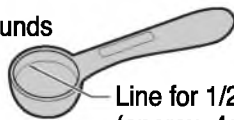
● French Press Coffee Brewing Guideline ●

Serving Size	Coffee Grounds (in Zojirushi Coffee Scoop)	Hot Water
1 serving	1 scoop (approx. 8g / 0.28 oz.)	150mL (5 oz.)
6 servings	6 scoops (approx. 48g / 1.68 oz.)	900mL (30 oz.)

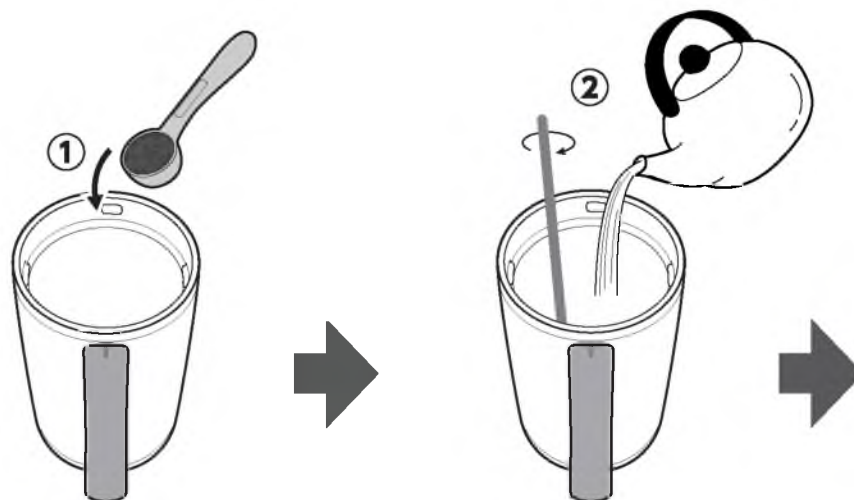
- Adjust the amount of coffee grounds according to your taste.

Coffee Scoop

1 leveled scoop of coffee grounds
(approx. 8g /
0.28 oz. / 2 Tbsp.)



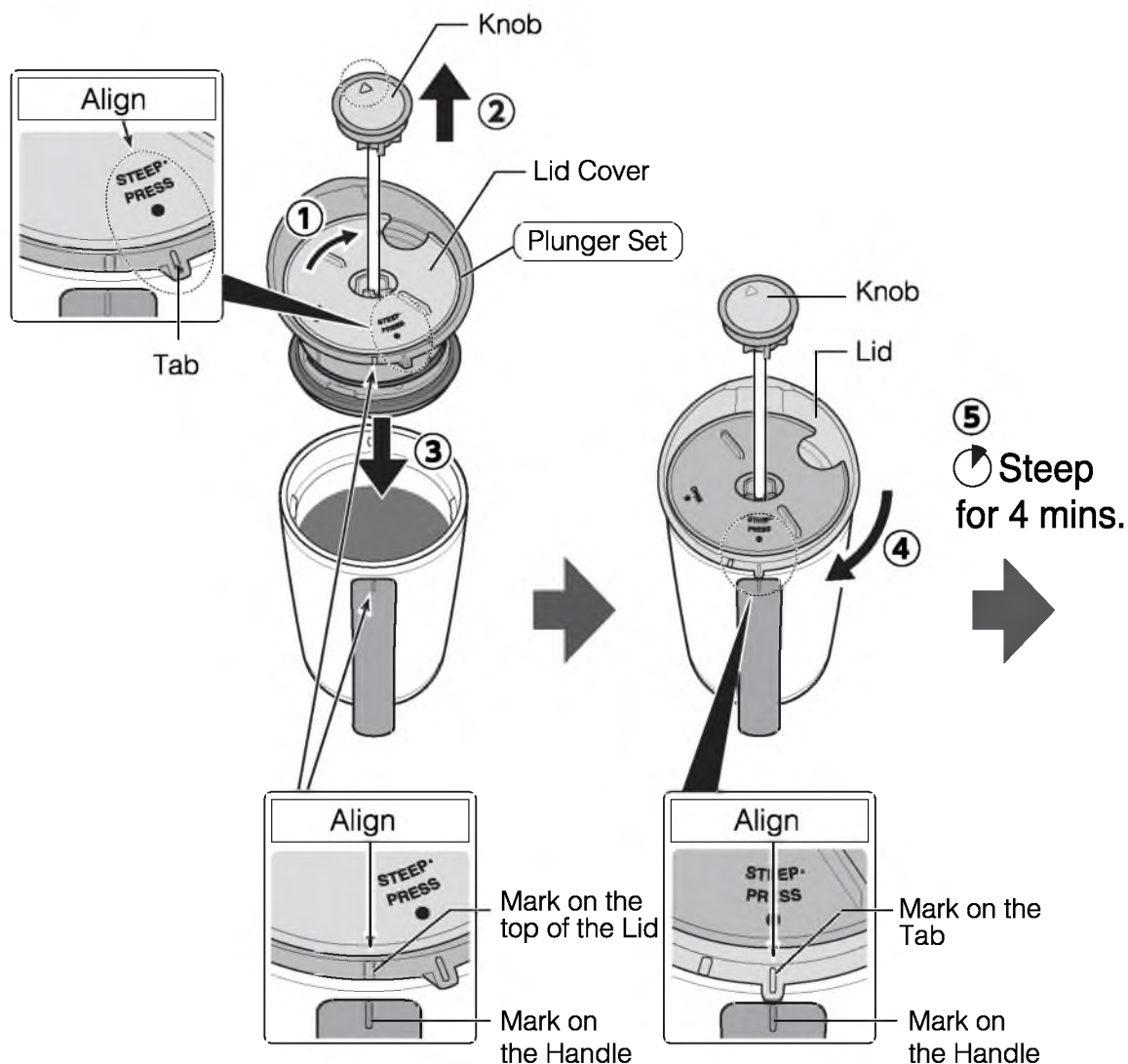
Line for 1/2 scoop
(approx. 4g /
0.14 oz. / 1 Tbsp.)



Using the French Press (continued)

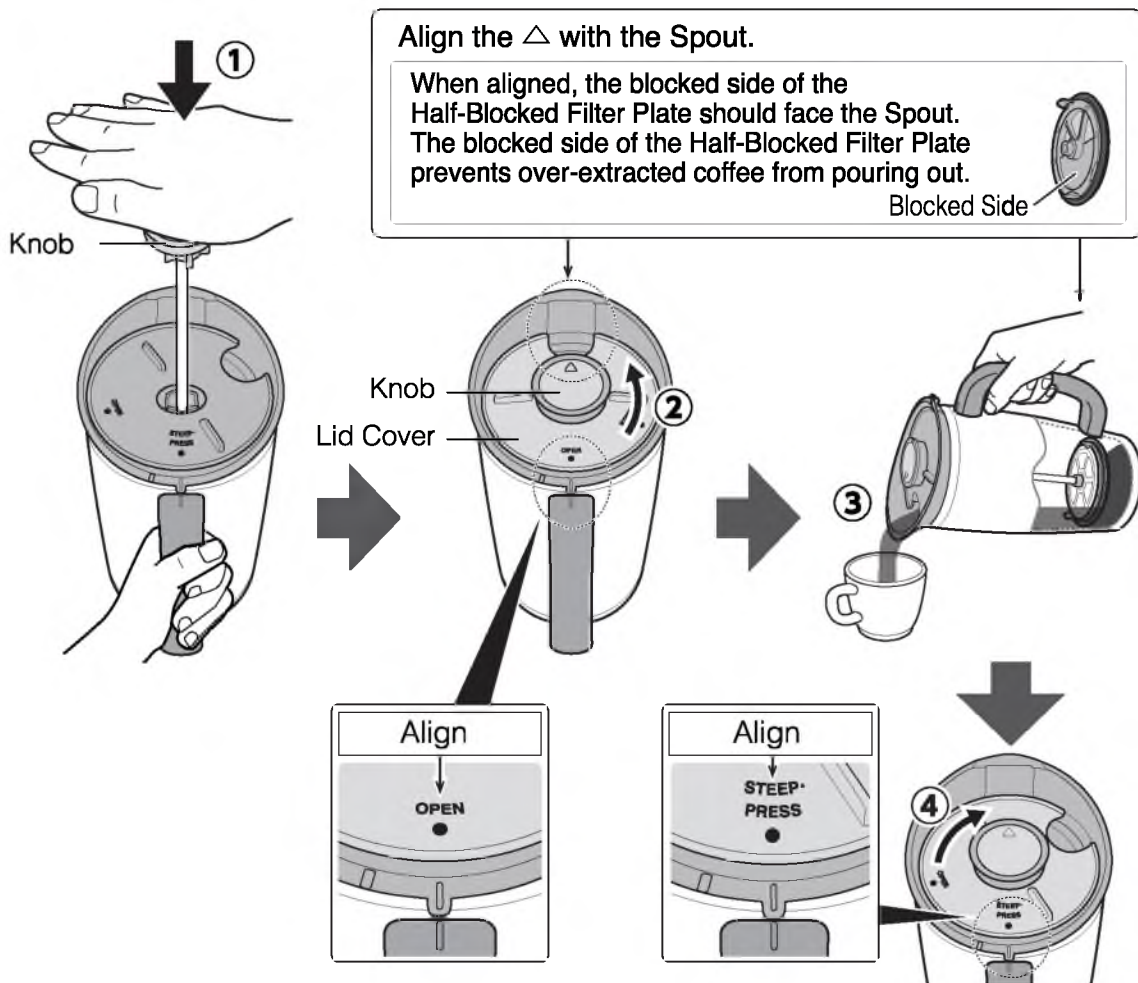
3 Attach the Plunger Set and steep for 4 minutes

- ① Turn the Lid Cover in the direction of the arrow to align **STEEP · PRESS** with the Tab.
- ② Lift up the Knob and align the \triangle with the Spout.
- ③ Insert the Plunger Set into the Main Body.
 - Make sure that the marks on the Lid and Handle align as illustrated.
- ④ Turn the Plunger Set in the direction of the arrow to align the mark on the Tab to the mark on the Handle.
 - The Plunger Set will be easier to turn if you turn it with your finger on the Tab.
- ⑤ Keep the plunger in the raised position and steep for 4 minutes.



4 Press down the Knob and pour the coffee

- ① **Slowly press down the Knob, taking about 10-15 seconds.**
 - If the Knob is difficult to push down, slightly lift the Knob and allow to sit shortly, then press down the Knob again.
 - Do not press down the Knob with excessive force. (Beverage may overflow.)
- ② **Turn the Lid Cover in the direction of the arrow to align OPEN with the Tab.**
- ③ **Pour the coffee into a cup.**
 - Before pouring, make sure that the Main Body, Lid, Lid Cover, and Knob are in the correct position. (Otherwise, the Lid may come off when pouring or the beverage may come out of an area other than the Spout and cause scalding or injury.)
- ④ **After pouring, turn the Lid Cover to close the Spout.**



Taking Care of Your French Press

Clean the product after each use to prevent odors, stain, mold, and to keep the product sanitary.

- The Rod and Filter Set are hot after use. Allow to cool before cleaning.
- Beverage may pool in the Filter Plate Set after the final pour. Remove the Plunger Set from the Main Body, then tilt the Plunger Set to drain any remaining beverage from the Filter Plate Set before cleaning.
- The Spout has a sharp lip to prevent dribbling and assure a clean pour. Please be careful when cleaning.
- Always disassemble the product before cleaning. (see pg. 6-8)

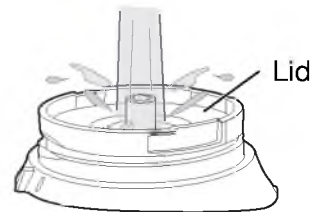
Exterior

Plunger Set

Coffee Scoop

- ① Wash with warm water and mild dishwashing liquid using a soft sponge.
- ② Rinse and wipe off any moisture and let dry thoroughly.

- Completely disassemble the Plunger Set before cleaning/drying. (see pg. 6-8 “How to Disassemble / Assemble Parts”)
- Clean difficult-to-reach areas with a small brush sold in stores.
- Clean the center of the Lid with running water after each use.



Interior

- ① Wash with warm water and mild dishwashing liquid using a soft sponge with a handle.
- ② Rinse and wipe off any moisture and let dry thoroughly.

To Remove Rust Spots and Water Stains:

You may find rust spots or water stains caused by impurities in the water. To remove these stains, fill the Main Body with hot water with 10% vinegar and allow to stand for 30 minutes to an hour without inserting the Plunger Set. Then wash the Interior thoroughly. (see pg. 13 “Taking Care of Your French Press”)

To Remove Coffee Stains:

To remove stains from the Interior, a food safe coffee pot cleaner is recommended for cleaning. (When cleaning the Interior using a food safe coffee pot cleaner, remove the Plunger Set.)

Taking Care of Your French Press (continued)

When Cleaning Your Product:

- Do not boil to sanitize or use a dishwasher or dish-dryer.
- Do not clean using paint thinner, polishing powders, abrasive cleansers, scrub brushes (nylon, metal wire, etc.), melamine sponges, the nylon side of an abrasive sponge, or any similar items. Doing so may damage the product.
- Do not use chlorine bleach. In addition, do not use even non-chlorine bleach to clean the exterior of the Main Body, as it may cause the print or stickers to come off.
- Do not soak in water for an extended period of time.
- If the product is not going to be used for an extended period, wash thoroughly with cold or lukewarm water and dry well. Store the product away from high temperatures and humidity. High temperatures and humidity may damage the product.

Replacement Parts

- Replacement parts may be available for an additional charge. Please replace damaged parts only with new parts.
- When replacing parts, please record the model number and part name beforehand. Parts can be purchased through Zojirushi.com, by contacting Zojirushi Customer Service, or the store where you purchased the product.

Zojirushi Customer Service

1-800-733-6270 www.zojirushi.com

Part Names (see pg. 1 "Name of Each Part")	Part Numbers
Lid Gasket	BS266003M-00
Sealing Ring	BS266011M-00
Coffee Scoop	BS266022L-01

Replacing the Lid Gasket, Sealing Ring and Lid:

We take care in only using materials that are safe and hygienic for food contact. However, if plastic parts become damaged or their surface becomes rough, please replace them for optimum performance. The Lid and other consumable parts may need to be replaced due to time and wear. Please check them about once a year.

Troubleshooting Guide

Problem	Cause	Solution
Beverage leaks from a part other than the Spout.	Are the Lid and Lid Gasket attached correctly?	Check the position and direction in which the Lid Gasket is attached, and make sure that the Lid is not loose. (see pg. 7, 11)
	Is the Lid or Lid Gasket dirty?	Clean the parts according to the instructions. (see pg. 13-14 "Taking Care of Your French Press")
	Did you overfill with beverage?	Discard a small amount of the beverage so it does not exceed the Maximum Water Level Line. (see pg. 9 "NOTE")
	Did you insert the Plunger Set with coffee grounds stuck on the Interior near the rim?	Remove any coffee grounds stuck on the Lid Gasket or the rim area before attaching the Plunger Set.
The beverage, Interior or Lid Set has a strong odor.	Did you leave beverages inside the product for a long time, or are there coffee stains on the Interior, Half-Blocked Filter Plate, Cap, Lid Gasket, or Sealing Ring?	Clean the parts according to the instructions. (see pg. 13-14 "Taking Care of Your French Press")
Large coffee grounds are in the coffee when poured.	After stirring, did you insert the Plunger Set while there were still coffee grounds stuck where the Lid attaches to the Main Body?	If there are any coffee grounds stuck on the Interior near the rim, push the grounds down with a spoon before inserting the Plunger Set.
	Are you using the Plunger Set with coffee grounds stuck to it?	Clean the parts according to the instructions. (see pg. 13-14 "Taking Care of Your French Press")
	Did you push down the Knob with excessive force?	Push down the Knob slowly.
	Is the Sealing Ring attached correctly?	Check the position and direction in which the Sealing Ring is attached, and make sure that it is not loose.

Troubleshooting Guide (continued)

Problem	Cause	Solution
The product does not retain heat.	Did you fill the product with a sufficiently hot beverage?	Fill the product with sufficiently hot beverage up to the correct level. To retain heat more effectively, preheat for about 1 minute by filling the Main Body with hot water before use. (see pg. 9 "NOTE")
Some beverage is left after the final pour.	The Filter Set is designed so that strong coffee and sediments remain at the bottom. This is not a malfunction.	
A rattling noise can be heard when the Main Body is shaken.	The noise comes from the metallic foil in the vacuum insulation to increase heat retention and does not indicate a malfunction.	
The Knob is difficult to push down.	Are you using fine coffee grounds or coffee grounds with a lot of fines?	Use medium-coarse or coarse coffee grounds. (see pg. 10) Also, some grinders may produce a lot of fines. Sift out the fines using a fine mesh strainer before brewing, and the Knob will be easier to push down.
	Is the product being used with coffee grounds trapped in the Mesh?	Clean the parts according to the instructions. (see pg. 13-14 "Taking Care of Your French Press")