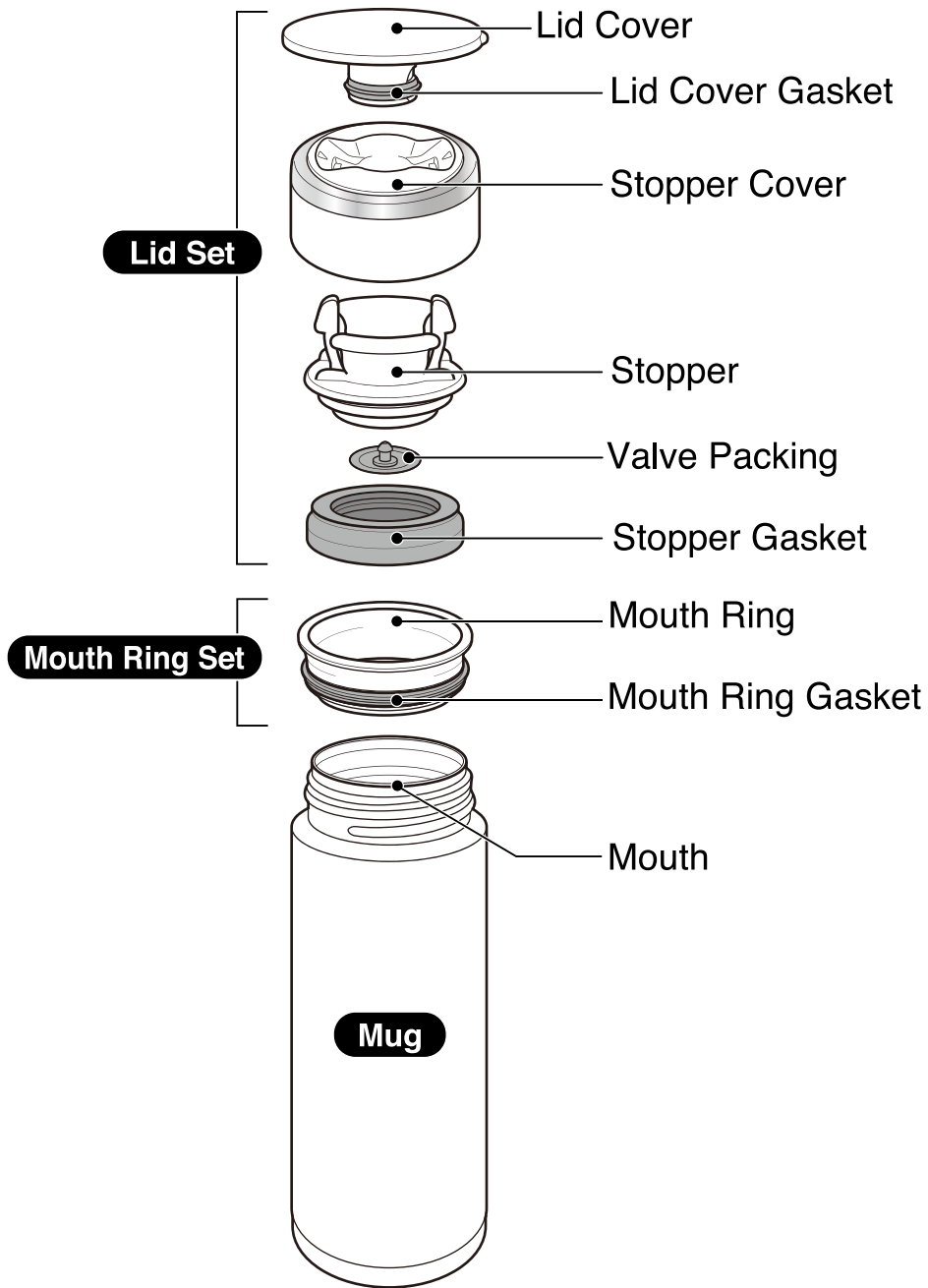




STAINLESS MUG

Model No. **SM-EB**

Name of Each Part



STAINLESS MUG

Household Use Only

Please read these instructions before use,
and keep for future reference.

Instruction Manual

Important Safeguards

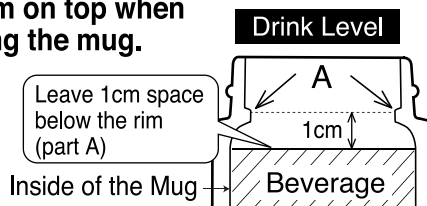
(This mug is for holding beverages and keeping them hot or cold. Please do not use for other than intended purposes.)

Please follow these instructions to prevent scalding, deterioration and discoloration of beverages, as well as malfunction and staining of the mug.

Do not allow infants or small children to use this product. Keep out of the reach of infants and small children.
Mishandling may cause injury or scalding.

Do not place near heat sources such as gas stoves, ovens and heaters.
Doing so may cause deformation or discoloration of the mug.

Leave 1cm (1/2-inch) room on top when filling the mug.



Contents may overflow when placing the Lid Set.

Do not use if the mug loses its heat retention properties.
The outside of the mug may become very hot if hot beverages are poured inside.

Always make sure the Stopper Gasket, Valve Packing and Mouth Ring Gasket are attached.
Contents may leak and/or cause scalding.

Do not heat in a microwave.
Doing so may cause sparks, deform or discolor the mug.

Always close the Lid Set securely.
Hot beverages may leak and cause scalding.

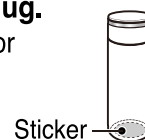
When containing hot beverages:

- **Do not shake the mug.**
Doing so may cause scalds or injury.
- **Be careful not to scald yourself when drinking out of the mug.**
Due to its vacuum insulation, the outside of the mug will not become hot, while hot beverages will remain very hot for many hours. Please use caution when drinking.

Do not drink out of the mug while driving. Always close the Lid Set securely after drinking.
Doing so may cause scalds or stain the interior of the car or clothes. Attempting to use while driving may also cause serious accidents.

Always make sure to use with the Lid Cover attached.
The interior of the Lid Set may become hot and cause scalds or injury.

Do not remove the sticker on the bottom of the mug.
Doing so may cause rust or holes.



Do not disassemble the Mug.

● The illustrations used in this instruction manual may vary from the actual product you have purchased.

When using a vehicle cup holder accessory:

- ① **Always keep the Lid Set securely closed when not drinking.**
Beverage may spill if the mug is tipped over, causing scalds or injury.
- ② **Make sure the mug fits into the holder securely before placing it in.**
Do not use the mug if it does not fit into the holder securely as it may tip over and cause scalds, injury or accidents.
- ③ **Check that the strength of the cup holder is sufficient to hold the mug before using.**
The mug may fall and cause injuries or burns, or stain the interior of the car or clothes if the cup holder does not hold up.
- ④ **Do not use a hanging-type cup holder that attaches to the window or air vent.**
The cup holder may fall off.
 - The mug may not fit into some cup holders.

Consume beverages within the same day to prevent from spoiling.

Beverages left inside for a long period of time may spoil and produce gas that may cause the Lid Set to burst or beverages to spill, causing injuries and scalds.

Clean the mug after every use.

Not cleaning thoroughly may cause the mug to rust, beverages to spoil, or cause pinholes.

Do not fill the mug with the following:

- Dry ice and carbonated drinks: contents may spill out or the pressure may cause the Lid Set to burst, causing injuries.
- Liquids high in sodium such as soup and Kobu-cha: although the liner is made of 18/8 stainless steel and is nonstick coated, salt may cause rust resulting in loss of thermal insulation.
- Dairy products and fruit juice: if left inside for a long period of time, contents may spoil and produce gas that may cause the Lid Set to burst, causing injuries.
- Fruit pulp and tea leaves: may become caught on the Stopper Gasket and cause contents to spoil.

When filling the mug with sports drinks:

- Rinse the inside of the mug as soon as possible after consumption to prevent rust and/or pinholes.
 - Clean the inside using a soft sponge to protect the nonstick coating from being scratched.
-

Warnings & Cautions

<p>Do not allow hot kettles to touch the Mouth Ring or the mouth of the mug. The mug may tip over, causing scalds.</p>	<p>Avoid dropping or hitting against hard surfaces. Damage to the plastic or stainless steel surface of the mug may reduce its ability to retain heat.</p>
<p>Always disassemble the Lid Set when washing then wipe dry. Water may collect inside the Lid Set and drip out if not dried well.</p>	<p>Do not rub the design on the outside of the mug strongly. It may come off.</p>
<p>Store the mug upright when carrying inside bags to prevent beverages from spilling.</p>	<p>Do not leave a tea bag inside and close the Lid Set. The tea bag may swell and cause leakage or cause drinks to spill out.</p>
<p>Do not tilt the mug suddenly when drinking. The beverage may spill and cause scalding or stain clothes.</p>	<p>Do not hold the mug by the Lid Set or Lid Cover. The mug may drop and cause injuries.</p>
<p>Do not force large ice cubes in. Doing so may cause deformation or damage to the product.</p>	<p>Clean the Stopper, Stopper Gasket, Valve Packing, Mouth Ring and Mouth Ring Gasket after every use. Not doing so may cause decay, mold, odor or discoloration. It may also cause leaks.</p>
<p>Do not attach parts other than those specifically for this product. Doing so may cause leaks or breakage.</p>	<p>Attach the Lid Set properly and turn the mug upside down to make sure contents do not leak.</p>
<p>Hot tea may discolor if stored for a long period of time. We recommend the use of tea bags and brewing right before consumption.</p>	<p>The rattling noise that may be heard when the product is shaken comes from the copper or aluminum foil in the vacuum insulation to increase heat (cold) retention and does not indicate a malfunction.</p>
<p>Be sure that the Stopper Gasket, Valve Packing and Lid Cover are attached properly to prevent beverages from leaking.</p>	

How to Take Care of Your Mug Always clean the mug after use.

- For better usage, please remember to clean after every use.

Exterior, Lid Set and the Mouth Ring Set	<ul style="list-style-type: none">① Wash with warm water and mild dishwashing liquid using a soft sponge.② Rinse, shake a few times and wipe dry.● Remove the Stopper Gasket and Valve Packing from the Lid Set and the Mouth Ring Gasket from the Mouth Ring before washing.● Please use a small brush (sold in stores) if necessary.
Interior	<ul style="list-style-type: none">① Wash with warm water and mild dishwashing liquid using a soft sponge with handle.② Then rinse and wipe moisture out to dry.● Keeping the inside clean will help prevent odors.

When Cleaning Your Product:

- **To protect the outside of the mug (paint, print or stickers):**
 - Do not use a dishwasher or dish-dryer. Do not boil to sanitize.
 - Do not use bleach on the outside of the mug.
- Do not clean with thinner, benzene, abrasive cleaners or other harsh cleaners.
- Do not use chlorine type bleach.
- Do not soak in water for an extended period of time.
- Wipe moisture off thoroughly to prevent water stains or rusting.
- Thoroughly wipe off any water between the Lid Cover and the Lid Set.

To Remove Rust Spots and Water Stains:

You may find rust spots or water stains caused by impurities in the water. To remove these stains, fill the mug with hot water with 10% vinegar and let it stand for 30 minutes to an hour without attaching the Lid Set, then wash the interior thoroughly.

To Remove Coffee and Tea Stains:

To remove coffee and tea stains from the interior, the Lid Set and the Mouth Ring Set, we recommend using Zojirushi's cleaning detergent SB-ZA01/SB-ZA01E. Always remove the Lid Set when using SB-ZA01/SB-ZA01E. Contact Zojirushi Customer Service or your local dealer for further information.

Replacing the Valve Packing, Stopper Gasket and Mouth Ring Set

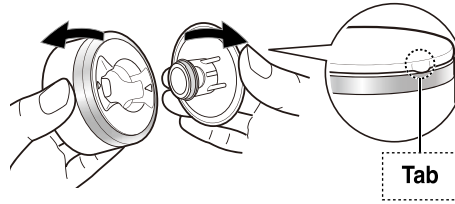
We take care in only using materials that are safe and hygienic for food contact. However, if plastic parts become damaged or its surface becomes rough, please replace them for optimum performance. The Valve Packing, Stopper Gasket and Mouth Ring Set may need to be replaced due to time and wear. Please check them about once a year. When replacing parts, please record the model number and part name beforehand. Then contact either the store where you purchased the product or Zojirushi Customer Service. Replacement parts may be available for an additional charge.

How to Disassemble the Parts

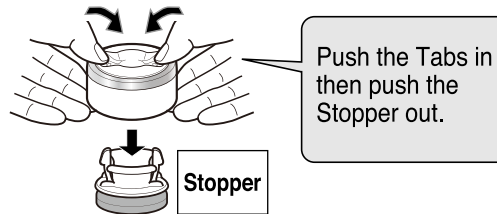
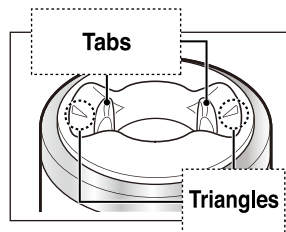
■Lid Set

1 Remove the Lid Cover.

Hold the Tab and pull apart as illustrated.

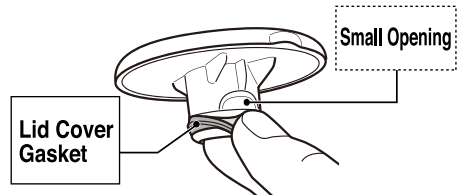


2 Remove the Stopper. Push the Tabs in as illustrated by the triangles to remove.

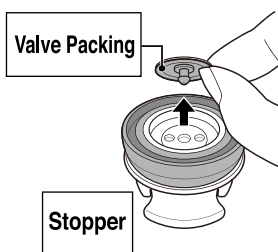


3 Remove the Lid Cover Gasket.

Remove the Lid Cover Gasket utilizing the Small Opening.



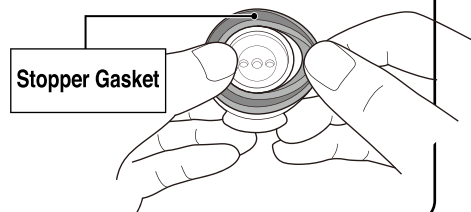
4 Remove the Valve Packing.



When removing the Valve Packing, be careful not to damage it with your nails.

5 Remove the Stopper Gasket.

Gently pull the Stopper Gasket off.



Please follow the steps in reverse to put the parts back together. SM-EB (E/K/T/C) / D