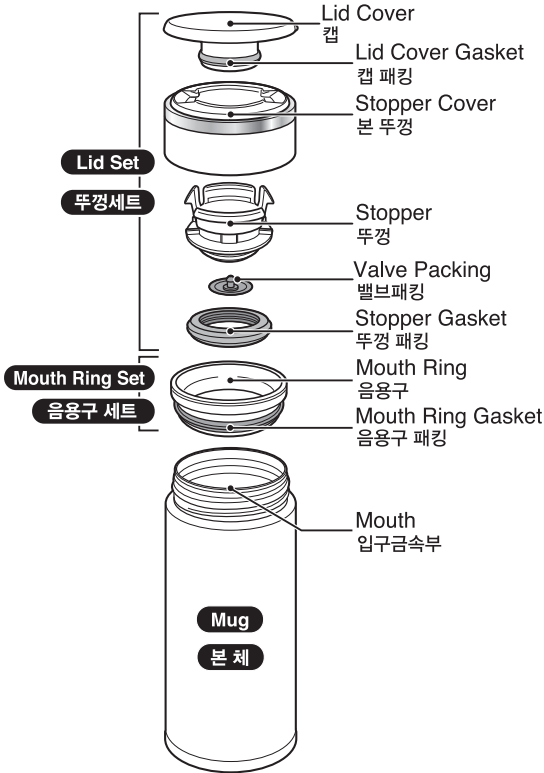




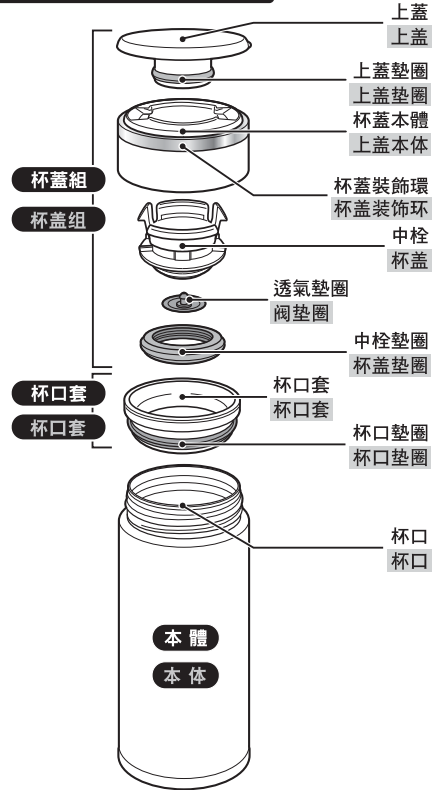
STAINLESS MUG

Model No. SM-JB

Name of Each Part / 각부의 명칭



各部位名稱 / 各部位名称



How to Disassemble the Parts / 부품의 분리 방법

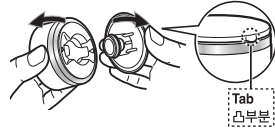
■ Lid Set

■ 뚜껑세트

1 Remove the Lid Cover.
캡을 분리한다

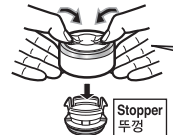
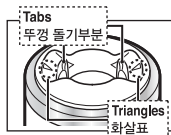
Hold the Tab and pull apart as illustrated.

캡의凸부분을 손가락으로 잡고 화살표 방향으로 당깁니다.

2 Remove the Stopper.
뚜껑을 분리한다

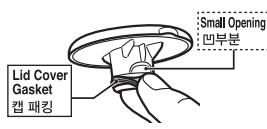
Push the Tabs in as illustrated by the triangles to remove.

뚜껑 돌기부분(2곳)을 화살표(> 및 <) 방향으로 손가락으로 눌러 분리합니다.

3 Remove the Lid Cover Gasket.
캡 패킹을 분리한다

Remove the Lid Cover Gasket utilizing the Small Opening.

안부분에 손가락을 대고 캡 패킹을 조금씩 당기며 분리합니다.

4 Remove the Valve Packing.
밸브패킹을 분리한다

When removing the Valve Packing, be careful not to damage it with your nails.

밸브패킹을 분리할 때는 손톱 등으로 손상시키지 않도록 주의하십시오.

5 Remove the Stopper Gasket.
뚜껑 패킹을 분리한다

Gently pull the Stopper Gasket off.



杯蓋組的拆卸方法

杯蓋組的拆卸方法

■ 杯蓋組

■ 杯蓋組

1 拆卸上蓋
拆卸上蓋

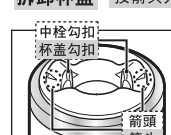
用手指按著上蓋的凸處，依箭頭方向撥開上蓋。

用手指捏著上蓋的凸處，往箭頭方向取下。

2 拆卸中栓
拆卸杯蓋

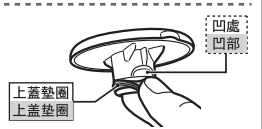
依箭頭方向(>及<)，用手指按壓中栓勾扣(2處)取下。

按箭頭方向(>及<)，用手指按壓杯蓋勾扣(2處)取下。

3 拆卸上蓋墊圈
拆卸上蓋墊圈

從凹處，用手指捏著墊圈取下。

用手指捏著凹部，邊移動墊圈邊取下。

4 取下透氣墊圈
取下閥墊圈

拆卸透氣墊圈時，請注意不要讓指尖等損傷墊圈。

拆卸閥墊圈時，請小心不要讓指尖等損傷墊圈。

5 拆卸中栓墊圈
拆卸杯蓋墊圈



Please follow the steps in reverse to put the parts back together. SM-JB (E/K/T/C) / A

安裝時，請依拆卸方法相反順序安裝。 安裝時，請依拆卸方法相反順序安裝。

Important Safeguards

(This mug is for holding beverages and keeping them hot or cold. Please do not use for other than intended purposes.)

Please follow these instructions to prevent scalding, deterioration and discoloration of beverages, as well as malfunction and staining of the mug.

<p>Keep out of reach of infants and small children.</p> <p>Mishandling may cause injury or scalding.</p>	<p>Do not place near heat sources such as gas stoves, ovens and heaters.</p> <p>Doing so may cause deformation or discoloration of the mug.</p>	<p>When using a vehicle cup holder accessory:</p> <p>① Always keep the Lid Set securely closed when not drinking. Beverage may spill if the mug is tipped over, causing scalds or injury.</p> <p>② Make sure the mug fits into the holder securely before placing it in. Do not use the mug if it does not fit into the holder securely as it may tip over and cause scalds, injury or accidents.</p> <p>③ Check that the strength of the cup holder is sufficient to hold the mug before using. The mug may fall and cause injuries or burns, or stain the interior of the car or clothes if the cup holder does not hold up.</p> <p>④ Do not use a hanging-type cup holder that attaches to the window or air vent. The cup holder may fall off.</p> <ul style="list-style-type: none">● The mug may not fit into some cup holders.
<p>Leave 1cm (1/2-inch) room on top when filling the mug.</p> 	<p>Do not use if the mug loses its heat retention properties.</p> <p>The outside of the mug may become very hot if hot beverages are poured inside.</p>	
<p>Contents may overflow when placing the Lid Set.</p>	<p>Always make sure the Stopper Gasket, Valve Packing and Mouth Ring Gasket are attached.</p> <p>Contents may leak and/or cause scalding.</p>	<p>Consume beverages within the same day to prevent from spoiling.</p> <p>Beverages left inside for a long period of time may spoil and produce gas that may cause the Lid Set to burst or beverages to spill, causing injuries and scalds.</p>
<p>Do not heat in a microwave.</p> <p>Doing so may cause sparks, deform or discolor the mug.</p>	<p>Always close the Lid Set securely.</p> <p>Hot beverages may leak and cause scalding.</p>	<p>Clean the mug after every use.</p> <p>Not cleaning thoroughly may cause the mug to rust, beverages to spoil, or cause pinholes.</p>
<p>When containing hot beverages:</p> <ul style="list-style-type: none">● Do not shake the mug. Doing so may cause scalds or injury.● Be careful not to scald yourself when drinking out of the mug. Due to its vacuum insulation, the outside of the mug will not become hot, while hot beverages will remain very hot for many hours. Please use caution when drinking.	<p>Do not drink out of the mug while driving. Always close the Lid Set securely after drinking.</p> <p>Doing so may cause scalds or stain the interior of the car or clothes. Attempting to use while driving may also cause serious accidents.</p>	<p>Do not fill the mug with the following:</p> <ul style="list-style-type: none">● Dry ice and carbonated drinks: contents may spill out or the pressure may cause the Lid Set to burst, causing injuries.● Liquids high in sodium such as soup and Kobu-cha: although the liner is made of 18/8 stainless steel and is nonstick coated, salt may cause rust resulting in loss of thermal insulation.● Dairy products and fruit juice: if left inside for a long period of time, contents may spoil and produce gas that may cause the Lid Set to burst, causing injuries.● Fruit pulp and tea leaves: may become caught on the Stopper Gasket and cause contents to spill.
<p>Always make sure to use with the Lid Cover attached.</p> <p>The interior of the Lid Set may become hot and cause scalds or injury.</p>	<p>Do not remove the sticker on the bottom of the mug.</p> <p>Doing so may cause rust or holes.</p> 	
<p>Do not disassemble the Mug.</p>		<p>When filling the mug with sports drinks:</p> <ul style="list-style-type: none">● Rinse the inside of the mug as soon as possible after consumption to prevent rust and/or pinholes.● Clean the inside using a soft sponge to protect the nonstick coating from being scratched.
<p>● The illustrations used in this instruction manual may vary from the actual product you have purchased.</p>		

● The illustrations used in this instruction manual may vary from the actual product you have purchased.

Warnings & Cautions

Do not allow hot kettles to touch the Mouth Ring or the mouth of the mug. The mug may tip over, causing scalds.	Avoid dropping or hitting against hard surfaces. Damage to the plastic or stainless steel surface of the mug may reduce its ability to retain heat.
Always disassemble the Lid Set when washing then wipe dry. Water may collect inside the Lid Set and drip out if not dried well.	Do not rub the design on the outside of the mug strongly. It may come off.
Store the mug upright when carrying inside bags to prevent beverages from spilling.	Do not leave a tea bag inside and close the Lid Set. The tea bag may swell and cause leakage or cause drinks to spill out.
Do not tilt the mug suddenly when drinking. The beverage may spill and cause scalding or stain clothes.	Do not hold the mug by the Lid Set or Lid Cover. The mug may drop and cause injuries.
Do not force large ice cubes in. Doing so may cause deformation or damage to the product.	Clean the Stopper, Stopper Gasket, Valve Packing, Mouth Ring and Mouth Ring Gasket after every use. Not cleaning thoroughly may cause mold to build.
Hot tea may discolor if stored for a long period of time. We recommend the use of tea bags and brewing right before consumption.	Attach the Lid Set properly and turn the mug upside down to make sure contents do not leak.
The rattling noise that may be heard when the product is shaken comes from the copper or aluminum foil in the vacuum insulation to increase heat retention and does not indicate a malfunction.	Be sure that the Stopper Gasket, Valve Packing and Lid Cover are attached properly to prevent beverages from leaking.

How to Take Care of Your Mug

Always clean the mug after use.

● For better usage, please remember to clean after every use.

Exterior, Lid Set and the Mouth Ring Set	① Wash with warm water and mild dishwashing liquid using a soft sponge. ② Rinse, shake a few times and wipe dry. ● Remove the Stopper Gasket and Valve Packing from the Lid Set and the Mouth Ring Gasket from the Mouth Ring before washing. ● Please use a small brush (sold in stores) if necessary.
Interior	① Wash with warm water and mild dishwashing liquid using a soft sponge with handle. ② Then rinse and wipe moisture out to dry. ● Keeping the inside clean will help prevent odors.

When Cleaning Your Product:

- **To protect the outside of the mug (paint, print or stickers):**
Do not use a dishwasher or dish-dryer. Do not boil to sanitize.
Do not use bleach on the outside of the mug.
- Do not clean with thinner, benzene, abrasive cleaners or other harsh cleaners.
- Do not use chlorine type bleach.
- Do not soak in water for an extended period of time.
- Wipe moisture off thoroughly to prevent water stains or rusting.
- Thoroughly wipe off any water between the Lid Cover and the Lid Set.

To Remove Rust Spots and Water Stains:

You may find rust spots or water stains caused by impurities in the water. To remove these stains, fill the mug with hot water with 10% vinegar and let it stand for 30 minutes to an hour without attaching the Lid Set, then wash the interior thoroughly.

To Remove Coffee and Tea Stains:

To remove coffee and tea stains from the interior, the Lid Set and the Mouth Ring Set, we recommend using Zojirushi's cleaning detergent SB-ZA01/SB-ZA01E. Always remove the Lid Set when using SB-ZA01/SB-ZA01E. Contact Zojirushi Customer Service or your local dealer for further information.

Replacing the Valve Packing, Stopper Gasket and Mouth Ring Set

We take care in only using materials that are safe and hygienic for food contact. However, if plastic parts become damaged or its surface becomes rough, please replace them for optimum performance. The Valve Packing, Stopper Gasket and Mouth Ring Set may need to be replaced due to time and wear. Please check them about once a year. When replacing parts, please record the model number and part name beforehand. Then contact either the store where you purchased the product or Zojirushi Customer Service. Replacement parts may be available for an additional charge.

SPECIFICATIONS:

Product: STAINLESS MUG
Model No. is stated on respective area.

Model No.	Capacity	Weight	Heat Retention	Cold Retention
SM-JB36	0.36 liter (12 oz.)	0.21 kg (8 oz.)	86°C (187°F) @ 1 hr. / 66°C (151°F) @ 6 hrs.	10°C (50°F) @ 6 hrs.
SM-JB48	0.48 liter (16 oz.)	0.24 kg (9 oz.)	87°C (189°F) @ 1 hr. / 70°C (158°F) @ 6 hrs.	9°C (48°F) @ 6 hrs.

Heat/Cold Retention Testing Conditions:
At a room temperature of 20°C±2°C, the mug is filled to the neck with hot or cold water and left standing in an upright position. For heat retention, once the hot water reaches 95°C±1°C, the temperature is measured after 1 hour and 6 hours. For cold retention, once the cold water reaches 4°C±1°C, the temperature is measured after 6 hours.
Materials: Inner Liner Stainless Steel (Nonstick Coated)
Exterior Stainless Steel (Acrylic Resin Painted)
Mouth of the Mug Stainless Steel
Mouth Ring Polypropylene
Stopper Polypropylene
Manufacturer: Zojirushi Corporation
Address: 1-20-5 Tenma, Kita-ku, Osaka 530-8511, Japan

품질표시

품명 : 스테인레스 보온병
모델명 : 상자 표면에 기재되어 있습니다.
실용량, 본체중량, 보온효력(주), 보냉효력(주)

모델명	실용량 (L)	중량 (kg)	보온효력 (도 이상)		보냉효력 (도 이하)
			1시간	6시간	6시간
SM-JB36	0.36	0.21	86	66	10
SM-JB48	0.48	0.24	87	70	9

(주) 보온효력이란 실온 20도 ±2도에서 제품에 뜨거운 물을 중간마개 하단까지 채우고 세워둔 상태에서 온수가 95도 ±1도일 때부터 24시간 및 6시간 방치한 경우의 그 물의 온도를 말합니다.
보냉효력이란 실온 20도 ±2도에서 제품에 냉수를 중간마개 하단까지 채워 세워둔 상태에서 물의 온도가 4도±1도일 때부터 6시간 방치한 경우의 그 물의 온도를 말합니다.
재료의 종류 : 내 부 스테인레스강 (불소수지 도장)
몸 체 스테인레스강 (아크릴수지 도장)
입구 금속부 스테인레스강
음 용 구 폴리프로필렌
뚜 꺽 폴리프로필렌
ZOJIRUSHI CORPORATION
1-20-5, TENMA, KITA-KU, OSAKA, JAPAN

品質標示

品名：不銹鋼真空保溫杯
型號、容量、本體重量、保溫 / 保冷效力(注)：

型號	容量 (公升)	重量 (公斤)	保溫效力 (度以上)		保冷效力 (度以下)
			1小時	6小時	6小時
SM-JB36	0.36	0.21	86	66	10
SM-JB48	0.48	0.24	87	70	9

(注) 保溫 / 保冷效力是商品在直立放置下，於室溫20±2度時，放入熱開水後其水溫降至95±1度開始，經過1小時及6小時之後；或放入冷開水後其水溫升至4±1度開始，經過6小時後，在瓶頸下方所測得瓶內的溫水或冷水水溫。
材料：本體內側 不銹鋼（防沾塗層）
本體外側 不銹鋼（壓克力樹脂塗層）
杯口 不銹鋼
杯口套 聚丙烯
杯蓋組 聚丙烯
原產地：泰國
製造商：象印股份有限公司
地址：日本國大阪府北區天滿1丁目20番5號
電話：+81-6-6356-2388
進口商(台灣)：台象股份有限公司
地址：台北市中山區長安東路2段100號9樓
電話：02-2506-9009 / 0800-880-141

製造日期：請參閱本體底部貼紙「製造番號」處，請勿撕除該貼紙。
舉例：BA 12 01 01
↓ 2012年 1月 1日
記載有BA, BB, BC, BD, . . . CA, CB, CC, CD, . . .
前2碼英文字母與製造日期無關，請參照第3碼後之說明。

品质标示

品名：不锈钢真空保温杯
型号：如包装上所示
容量、本体重量、保温 / 保冷效力（注）

型号	容量 (公升)	重量 (公斤)	保温效力 (度以上)		保冷效力 (度以下)
			1小时	6小时	6小时
SM-JB36	0.36	0.21	86	66	10
SM-JB48	0.48	0.24	87	70	9

(注) 本包装上品质标示所标明的保温 / 保冷效力是商品在直立放置下，于室温20±2度时，放入热开水后其水温降至95±1度开始，经过1小时及6小时之后；或放入冷开水后其水温升至4±1度开始，经过6小时后，在瓶颈下方所测得瓶内的温水或冷水水温。
材料：本体内侧 不锈钢（防粘涂层）
本体外侧 不锈钢（压克力树脂涂层）
杯口 不锈钢
杯口套 聚丙烯
杯盖 聚丙烯
上海象印家用电器有限公司
联系地址：上海市静安区南京西路699号东方有线大厦701室
制造商：象印有限公司
制造商地址：日本国大阪府北區天滿1丁目20番5号
原产地：泰国
象印公司全国服务热线：800-819-9119
手机用户拨打：400-680-9119
公司主页：http://zojirushi-china.com