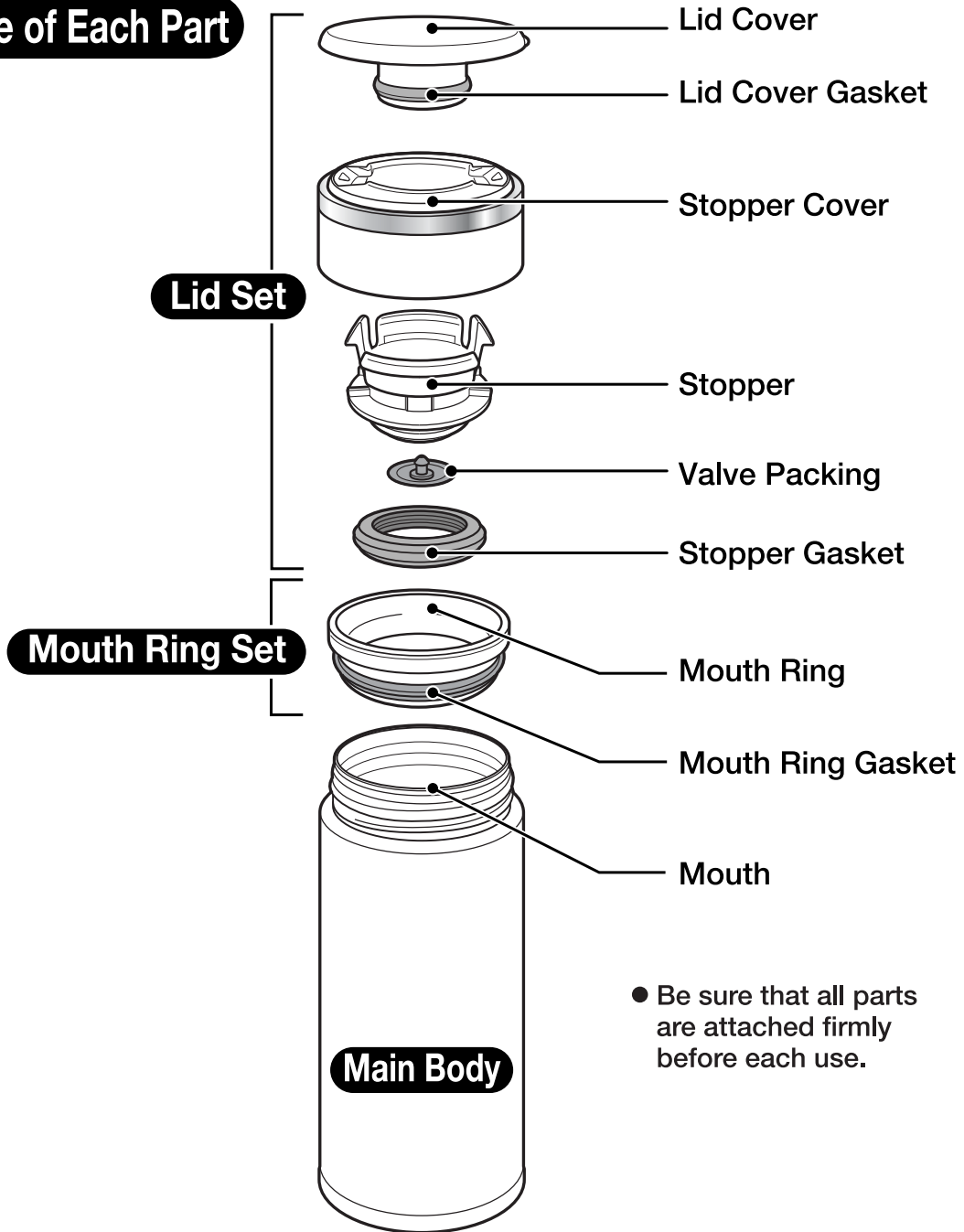




STAINLESS MUG SM-JD / SM-JE

Household Use Only
Instruction Manual

Name of Each Part



● Be sure that all parts are attached firmly before each use.

Please read these instructions before use, and keep for future reference.

SM-JD / SM-JE(E/K/T/C) / E

Important Safeguards

● Please follow these instructions to prevent scalding, deterioration and discoloration of beverages, as well as malfunction and staining of the Mug.

Do not allow infants or small children to use this product. Keep out of the reach of infants and small children.

Mishandling may cause injury or scalding.

Do not place near heat sources such as gas stoves, ovens and heaters.

Doing so may cause deformation or discoloration of the Mug.

Do not heat in a microwave.

Doing so may cause sparks, deform or discolor the Mug.

Do not use if the Mug loses its heat retention properties.

The outside of the Main Body may become very hot if hot beverages are poured inside.

Consume beverages within the same day.

Not doing so may cause spoiling. In addition, if left inside for a long period of time, spoiled beverages may produce gas, raising the pressure inside the Main Body and causing the Lid Set to burst or beverages to spill, resulting in injuries and scalding.

Always close the Lid Set securely.

Hot beverages may leak and cause scalding.

This Mug is for holding beverages and keeping them hot or cold.

Please do not use for other than intended purposes.

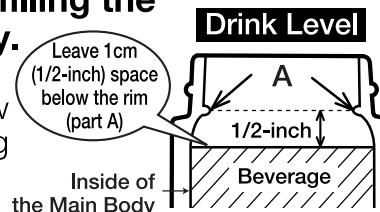
Do not remove the sticker on the bottom of the Mug.

Doing so may cause rust or holes.



Leave 1cm (1/2-inch) room on top when filling the Main Body.

Contents may overflow when placing the Lid Set.



Clean the Main Body after every use.

Not cleaning thoroughly may cause the Main Body to rust, beverages to spoil, or cause pinholes.

Do not drink out of the Mug while driving. Always close the Lid Set securely after drinking.

Doing so may cause scalds or stain the interior of the car or clothes. Attempting to use while driving may also cause serious accidents.

Do not disassemble the Main Body.

Always make sure the Lid Cover, Stopper, Valve Packing, Stopper Gasket and Mouth Ring Gasket are attached.

Contents may leak and/or cause scalding.

When containing hot beverages:

- **Do not shake the Mug.**
Doing so may cause scalds or injury.
- **Be careful not to scald yourself when drinking out of the Mug.**
Due to its vacuum insulation, the outside of the Mug will not become hot, while hot beverages will remain very hot for many hours. Please use caution when drinking.
- **Always make sure to use with the Lid Cover attached.**
The interior of the Lid Set may become hot and cause scalds or injury.

Important Safeguards, Continued

When filling the Mug with sports drinks:

- In order to prevent rusting and/or pinholes, rinse the inside and outside of the Main Body, the Lid Set and the Mouth Ring Set immediately after consumption.
 - Clean the inside using a soft sponge to protect the nonstick coating from being scratched.
-

When using a vehicle cup holder accessory:

- ① **Always keep the Lid Set securely closed when not drinking.**
Beverage may spill if the Mug is tipped over, causing scalds or injury.
 - ② **Make sure the Mug fits into the holder securely before placing it in.**
Do not use the Mug if it does not fit into the holder securely as it may tip over and cause scalds, injury or accidents.
 - ③ **Check that the strength of the cup holder is sufficient to hold the Mug before using.**
The Mug may fall and cause injuries or burns, or stain the interior of the car or clothes if the cup holder does not hold up.
 - ④ **Do not use a hanging-type cup holder that attaches to the window or air vent.**
The cup holder may fall off.
- **The Mug may not fit into some cup holders.**
-

Do not fill the Mug with the following:

- **Dry ice and carbonated drinks:**
Contents may spill out or the pressure may cause the Lid Set to burst, causing injuries.
 - **Liquids high in sodium such as soup and Kobu-cha:**
Although the liner is made of 18/8 stainless steel and is nonstick coated, salt may cause rust resulting in loss of thermal insulation.
 - **Dairy products and fruit juice:**
If left inside for a long period of time, contents may spoil and produce gas that may cause the Lid Set to burst, causing injuries.
 - **Fruit pulp and tea leaves:**
May become caught on the Stopper Gasket and cause contents to spoil.
-

Do not place near open flames (from gas stoves, etc.), on top of electric heaters or IH hot plates, or other IH cooking devices.

Doing so may cause a fire or malfunction.

Warnings & Cautions

Do not allow hot kettles to touch the Mouth Ring or the mouth of the Main Body.

The Mug may tip over, causing scalds.



Be sure that the Stopper Gasket, Valve Packing and Lid Cover are attached properly to prevent beverages from leaking.

Do not tilt the Main Body suddenly when drinking.

The beverage may spill and cause scalding or stain clothes.

Always disassemble the Lid Set when washing then wipe dry.

Water may collect inside the Lid Cover, the Stopper Cover or the Stopper, and may drip out if not dried well.

Do not leave a tea bag inside and close the Lid Set.

The tea bag may swell and cause leakage or cause drinks to spill out.

Clean the Stopper, Stopper Gasket, Valve Packing, Mouth Ring and Mouth Ring Gasket after every use.

Not doing so may cause decay, mold, odor or discoloration. It may also cause leaks.

Avoid dropping or hitting against hard surfaces.

Damage to the plastic or stainless steel surface of the Mug may reduce its ability to retain heat.

Do not hold the Mug by the Lid Set or Lid Cover.

The Mug may drop and cause injuries.

Do not rub the design on the outside of the Main Body strongly.

It may come off.

Do not attach parts other than those specifically for this product.

Doing so may cause leaks or breakage.

Hot tea may discolor if stored for a long period of time. We recommend the use of tea bags and brewing right before consumption.

Do not force large ice cubes in.

Doing so may cause deformation or damage to the product.

Store the Mug upright when carrying inside bags to prevent beverages from spilling.

Attach the Lid Set properly and turn the Mug upside down to make sure contents do not leak.

The rattling noise that may be heard when the Main Body is shaken comes from the copper or aluminum foil in the vacuum insulation to increase heat (cold) retention and does not indicate a malfunction.

- The illustrations used in this instruction manual may vary from the actual product you have purchased.

How to Take Care of Your Mug

- Clean the product after each use to prevent odors, dirt and mold, and to keep the product sanitary.
- For better usage, please remember to clean after every use.

Exterior, Lid Set and the Mouth Ring Set

- ① Wash with warm water and mild dishwashing liquid using a soft sponge.
 - ② Rinse, shake a few times and wipe dry.
- Remove the Stopper Gasket and Valve Packing from the Lid Set and the Mouth Ring Gasket from the Mouth Ring before washing. Foreign matter or dirt left on the Mug may cause beverages to leak.
 - Please use a small brush (sold in stores) if necessary.

Interior

- ① Wash with warm water and mild dishwashing liquid using a soft sponge with handle.
- ② Then rinse and wipe moisture out to dry.

When Cleaning Your Product:

To protect the paint, print or stickers on the outside of the Main Body:

- Do not use a dishwasher or dish-dryer. Do not boil to sanitize.
- Do not use bleach on the outside of the Main Body.
- Do not clean using paint thinner, benzine, metal wire scrub brushes, scrubbing brushes that include abrasive cleansers, polishing powders, cleansers, melamine sponges, or any similar items.
- Do not use chlorine type bleach.
- Do not soak in water for an extended period of time.
- Wipe moisture off thoroughly to prevent water stains or rusting.
- Thoroughly wipe off any water between the Lid Cover, the Stopper Cover and the Stopper.
- If the product is not going to be used for an extended period, wash thoroughly with cold or lukewarm water and dry well. Store the product away from high temperatures and humidity. These may damage the product.

Replacing the Stopper, Valve Packing, Stopper Gasket, Mouth Ring and Mouth Ring Gasket

We take care in only using materials that are safe and hygienic for food contact. However, if plastic parts become damaged or its surface becomes rough, please replace them for optimum performance. The Valve Packing, Stopper Gasket and Mouth Ring Set may need to be replaced due to time and wear. Please check them about once a year. When replacing parts, please record the model number and part name beforehand. Then contact either the store where you purchased the product or Zojirushi Customer Service. Replacement parts may be available for an additional charge.

How to Take Care of Your Mug, Continued

To Remove Rust Spots and Water Stains:

You may find rust spots or water stains caused by impurities in the water. To remove these stains, fill the Main Body with hot water with 10% vinegar and let it stand for 30 minutes to an hour without attaching the Lid Set, then wash the interior thoroughly.

To Remove Coffee and Tea Stains:

To remove coffee and tea stains from the interior, the Lid Set and the Mouth Ring Set, we recommend using Zojirushi's cleaning detergent SB-ZA01/SB-ZA01E. Always remove the Lid Set when using SB-ZA01/SB-ZA01E. Contact Zojirushi Customer Service or your local dealer for further information.

SPECIFICATIONS:

Product: STAINLESS MUG

Model No.	Capacity	Weight	Heat Retention (Above)	Cold Retention (Below)
SM-JD36	0.36 liter (12 oz.)	0.21 kg (8 oz.)	86°C (187°F) @ 1 hr./	10°C (50°F) @ 6 hrs./
SM-JE36			66°C (151°F) @ 6 hrs./	
SM-JD48	0.48 liter (16 oz.)	0.25 kg (9 oz.)	87°C (189°F) @ 1 hr./	9°C (48°F) @ 6 hrs./
SM-JE48			70°C (158°F) @ 6 hrs./	

Heat/Cold Retention Testing Conditions:

At a room temperature of 20°C±2°C (68°F±4°F), the Main Body is filled to below the Lid Set with hot or cold water and left standing in an upright position. For heat retention, once the hot water reaches 95°C±1°C (203°F±2°F), the temperature is measured after 1 hour and 6 hours.

For cold retention, once the cold water reaches 4°C±1°C (39°F±2°F), the temperature is measured after 6 hours.

Materials:	Inner Liner	Stainless Steel (Nonstick Coated)
	Exterior	Stainless Steel (Acrylic Resin Painted)
	Mouth	Stainless Steel
	Mouth Ring	Polypropylene
	Stopper	Polypropylene
	Gasket & Packing	Silicon

Manufacturer: Zojirushi Corporation

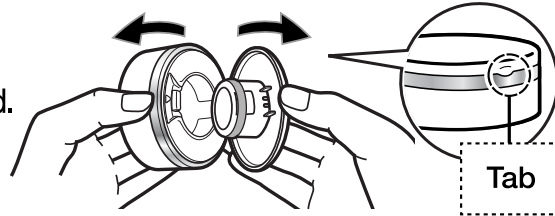
Address: 1-20-5 Tenma, Kita-ku, Osaka 530-8511, Japan

How to Disassemble the Parts

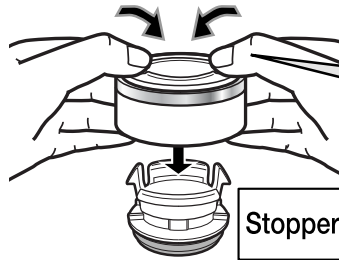
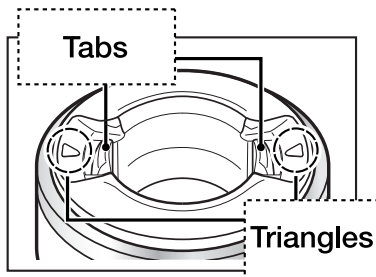
■ Lid Set

1 Remove the Lid Cover.

Hold the Tab and pull apart as illustrated.



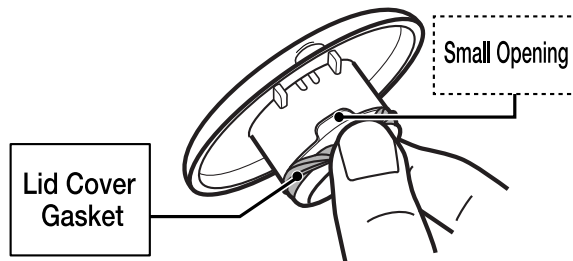
2 Remove the Stopper. Push the Tabs in as illustrated by the triangles to remove.



Push the Tabs in then push the Stopper out.

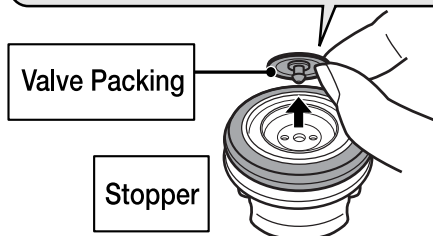
3 Remove the Lid Cover Gasket.

Remove the Lid Cover Gasket utilizing the Small Opening.

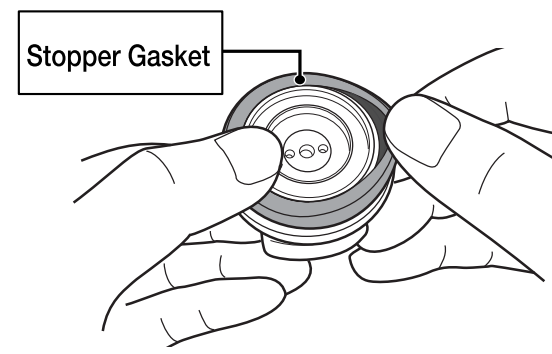


4 Remove the Valve Packing.

When removing the Valve Packing, be careful not to damage it with your nails.



5 Remove the Stopper Gasket.



Please follow the steps in reverse to put the parts back together.