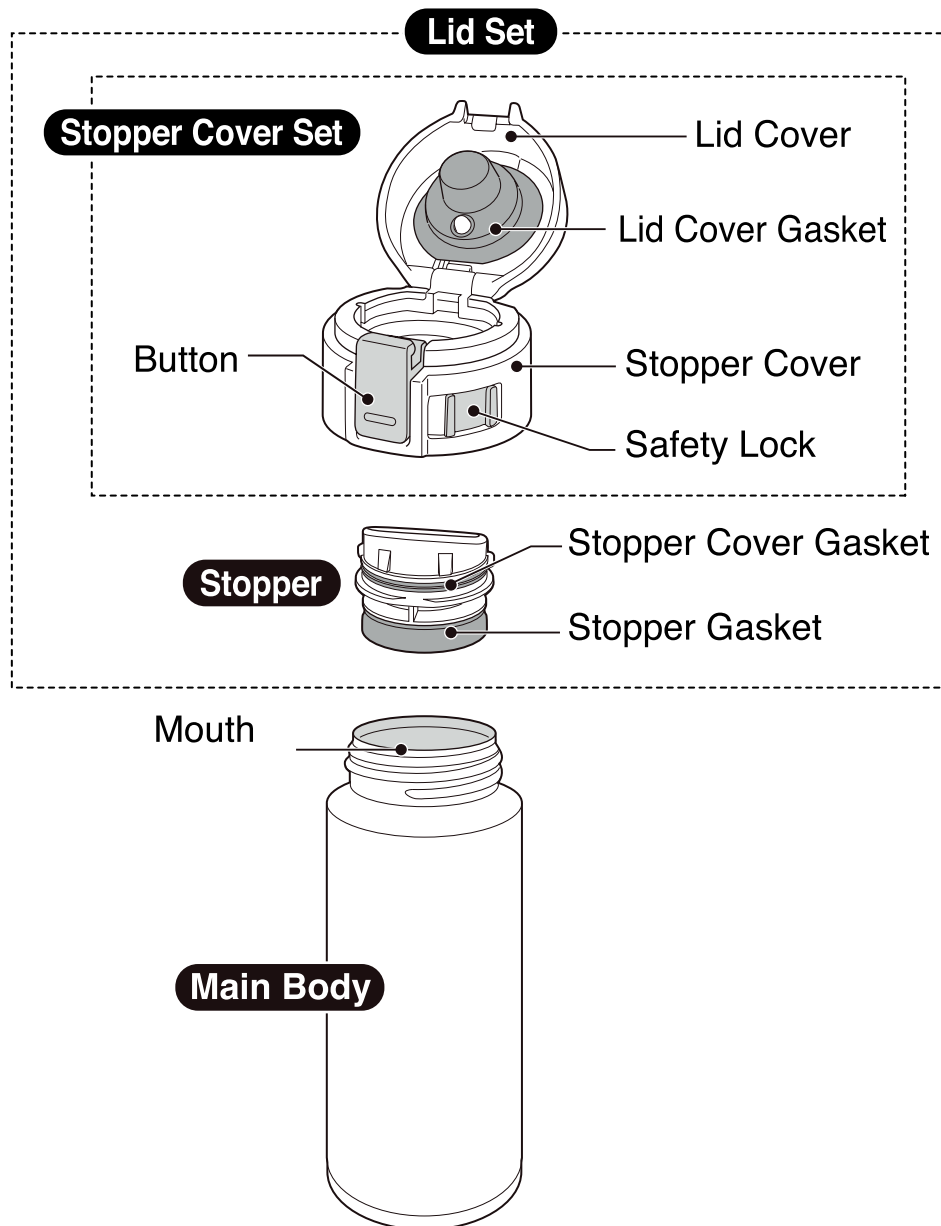




SM-KA / SM-KB (E/K/T/C) / E

# STAINLESS MUG Model No. SM-KA / SM-KB

## Name of Each Part



# STAINLESS MUG

# INSTRUCTION MANUAL

Household Use Only

Thank you for your purchase of this quality Zojirushi product. We are confident that it will give you top performance and optimum satisfaction for many years. To ensure this, please read and follow the important guidelines below.

## Important Safeguards:

- Please follow these instructions to prevent scalding, deterioration and discoloration of beverages, as well as malfunction and staining of the Mug.

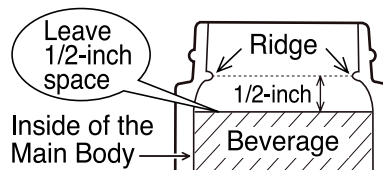
**Do not allow infants or small children to use this product. Keep out of the reach of infants and small children.**

Mishandling may cause injury or scalding.

**Leave 1/2-inch room on top when filling the Main Body.**

Contents may overflow when placing the Lid Set.

**Leave 1/2-inch room on top**



**Be careful not to scald yourself when the Mug contains hot beverages.**

Due to its vacuum insulation, the outside of the Main Body will not become hot, while hot beverages will remain very hot for many hours. Please drink with caution.

**Do not open the Lid Cover with the Mug close to your face or tilted toward you.**

Hot beverages may suddenly come out or spew out and may cause scalding.

**Always clean thoroughly after use.**

**Do not disassemble the Main Body.**

**Do not heat in a microwave.**

**Do not drink out of the Mug while driving.**

Doing so may cause scalds or stain the interior of the car or clothes. Attempting to use while driving may also cause serious accidents.

**When using a vehicle cup holder accessory:**

- ① **Always keep the Lid Cover securely closed when not drinking.**  
Beverage may spill if the Mug is tipped over, causing scalds or injury.
  - ② **Make sure the Mug fits into the holder securely before placing it in.**  
Do not use the Mug if it does not fit into the holder securely as it may tip over and cause scalds, injury or accidents.
  - ③ **Check that the strength of the cup holder is sufficient to hold the Mug before using.**  
The Mug may fall and cause injuries or burns, or stain the interior of the car or clothes if the cup holder does not hold up.
  - ④ **Do not use a hanging-type cup holder that attaches to the window or air vent.**  
The cup holder may fall off.
- The Mug may not fit into some cup holders.

**Do not remove the sticker on the bottom of the Main Body.**

Doing so may cause rust or holes.

Sticker



**Do not fill with beverages with the Lid Set attached.**

Doing so may cause beverages to overflow and is dangerous.

## **Important Safeguards: Continued**

- Please follow these instructions to prevent scalding, deterioration and discoloration of beverages, as well as malfunction and staining of the Mug.
- 

**Be sure to close the Lid Set security. Be sure to close the Lid Cover securely after use.**

Not doing so may cause contents to leak and result in scalding or staining of clothes and bags.

---

**Always make sure the Stopper Gasket, Stopper Cover Gasket and Lid Cover Gasket are attached.**

Contents may leak and/or cause scalding.

---

**Do not place near heat sources such as gas stoves, ovens and heaters.**

---

**Do not use the Mug if it loses its heat retention properties.**

The outside of the Main Body may become very hot if hot beverages are poured inside.

---

**Consume beverages within the same day to prevent from spoiling.**

---

**Do not fill the Mug with the following:**

- Dry ice and carbonated drinks: contents may spill out or the pressure may cause the Lid Set to burst, causing injuries.
  - Liquids high in sodium such as soup and Kobu-cha: although the liner is made of 18/8 stainless steel and is nonstick coated, salt may cause rust resulting in loss of thermal insulation.
  - Dairy products and fruit juice: if left inside for a long period of time, contents may spoil and produce gas that may cause the Lid Set to burst, causing injuries.
  - Fruit pulp and tea leaves: may become caught on the Stopper Gasket and cause contents to spoil.
- 

**When the Mug is filled with hot beverages, the pressure inside may increase and make it difficult to remove the Lid Set. If this happens, open the Lid Cover first to release the pressure then remove the Lid Set.**

Do not forcefully remove the Lid Set, as it may burst and cause injuries or scalds.

---

**Do not shake the Mug when it contains hot beverages.**

Doing so may cause scalds or injuries.

---

**When filling the Mug with sports drinks:**

- In order to prevent rusting and/or pinholes, rinse the inside and outside of the Main Body and the Lid Set immediately after consumption.
  - Clean the inside using a soft sponge to protect the nonstick coating from being scratched.
- 

**Do not place near open flames (from gas stoves, etc.), on top of electric heaters or IH hot plates, or other IH cooking devices.**

Doing so may cause a fire or malfunction.

---

## Warnings and Cautions:

---

**Do not allow hot kettles to touch the Mouth of the Main Body.**

Doing so may damage the Mug.

---

**Avoid dropping or hitting against hard surfaces.**

Doing so may damage the plastic or stainless steel surface of the Mug, which may reduce its ability to retain heat (keep warm or keep cool).

---

**Always disassemble the Lid Set when washing and wipe dry.**

Water may drip out if it is not dried well.

---

**Do not rub the design on the outside of the Main Body strongly.**

---

**Do not force large ice cubes in.**

---

**Hot tea may discolor if stored for a long period of time. We recommend the use of tea bags and brewing right before consumption.**

---

**Do not leave a tea bag inside and close the Lid Set.**

---

**Do not hold the Mug by the Lid Set or the Lid Cover when carrying.**

The Mug may fall and cause injuries.

---

**Always clean the Lid Set, Stopper Gasket, Stopper Cover Gasket and Lid Cover Gasket thoroughly after use.**

Not doing so may cause decay, mold, odor or discoloration. It may also cause leaks.

---

**If the Mug is filled with cold beverages and the humidity is high, condensation may occur on the Lid Set. Place the Mug at an upright position when carrying in a bag.**

---

**Placing ice cubes in the Mug may cause the internal pressure to decrease and the Lid Cover Gasket may come off when opening the Lid Cover. If this happens, please reattach the Lid Cover Gasket.**

---

**The rattling noise that may be heard when the Main Body is shaken comes from the copper or aluminum foil in the vacuum insulation to increase heat (cold) retention and does not indicate a malfunction.**

---

**Do not attach parts other than those specifically for this product.**

Doing so may cause leaks or breakage.

---

● The illustrations used in this instruction manual may vary from the actual product you have purchased.

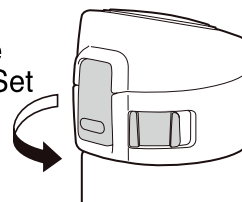
# How to Use:

- Follow the instructions for care and wash the Lid Set, the inside and outside of the Main Body thoroughly before use.
- Attach the Lid Set properly and turn the Mug upside down to make sure contents do not leak.

## 1 Remove the Lid Set from the Mug.

Remove the Lid Set from the Mug by turning it counterclockwise as illustrated.

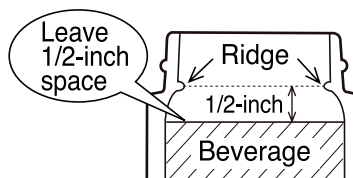
Remove the Lid Set



## 2 Fill the Main Body with beverage.

Preheat or precool the Main Body before filling with your beverage for better heat retention.

Leave 1/2-inch room on top



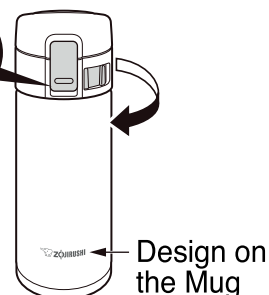
## 3 Close the Lid Set securely.

Close the Lid Cover, lock the Safety Lock\* then turn the Lid Set clockwise as illustrated to close.

\*See illustration for “4” below.

- Close the Lid Set securely until the design on the Mug and the center of the Lid Set align.

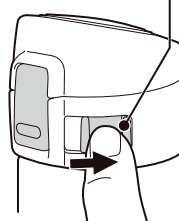
Center of the Lid Set



## 4 Unlock the Safety Lock.

With the Mug at an upright position, slide the Safety Lock to the right to unlock.

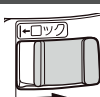
Safety Lock



LOCK



UNLOCK

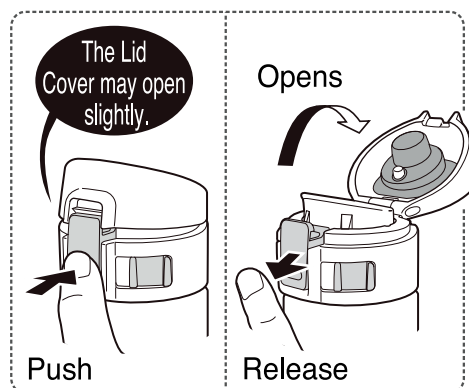


## How to Use: Continued

### 5 Open the Lid Cover.

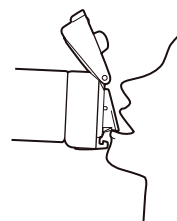
Push the Button and release to open the Lid Cover.

- If the Lid Cover does not open after releasing the Button, check that the Safety Lock is open and try again. (The Lid Cover may become difficult to open due to the temperature difference between the inside and outside of the Mug.)



### 6 Drink the beverage.

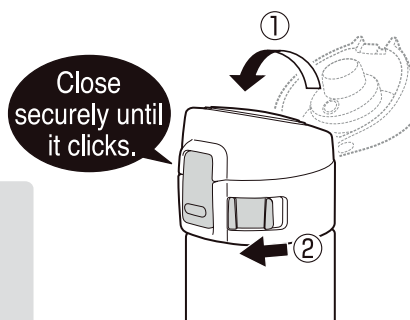
- Do not tilt the Mug suddenly when drinking. (The beverage may spill and cause scalding or stain clothes.)



### 7 Close the Lid Cover and lock.

- ① With the Mug at an upright position, close the Lid Cover until it clicks.
- ② Slide the Safety Lock to the left to lock.

- Do not leave the Mug with the Lid Cover open.
- Always close the Lid Cover securely at an upright position.



- Store the Mug upright when carrying inside bags to prevent beverages from spilling.



# How to Take Care of Your Mug:

- Always clean all parts thoroughly after each use.
- When cleaning the Lid Set, be sure to disassemble them into parts.

## Exterior and Lid Set

Wash with warm water and mild dishwashing liquid using a soft sponge. Rinse, shake a few times and wipe dry.

- When washing the Lid Set, disassemble it first then wash and dry.
- Disassemble the Stopper Gasket, Lid Cover Gasket and Stopper Cover Gasket before washing.
- Use a small brush sold in stores if necessary.

## Interior

Wash with warm water and mild dishwashing liquid using a soft sponge with handle, rinse and dry.

- Keeping the inside clean will help prevent odors.

## When Cleaning Your Product:

### ● To protect the outside of the Main Body (paint, print or stickers):

- Do not use a dishwasher or dish-dryer. Do not boil to sanitize.
- Do not use bleach on the outside of the Main Body.
- Do not clean with thinner, benzene, abrasive cleaners or other harsh cleaners.
- Do not use chlorine type bleach.
- Do not soak in water for an extended period of time.
- Wipe moisture off thoroughly to prevent water stains or rusting.

## To Remove Rust Spots and Water Stains:

You may find rust spots or water stains caused by impurities in the water. To remove these stains, fill the Main Body with hot water with 10% vinegar and let it stand for 30 minutes to an hour without attaching the Lid Set, then wash the interior thoroughly.

## To Remove Coffee and Tea Stains:

To remove coffee and tea stains from the interior and the Lid Set, we recommend using Zojirushi's cleaning detergent SB-ZA01/SB-ZA01E. Always remove the Lid Set when using SB-ZA01/SB-ZA01E. Contact Zojirushi Customer Service or your local dealer for further information.

## Replacement Parts:

We take care in only using materials that are safe and hygienic for food contact. However, if plastic parts become damaged or its surface becomes rough, please replace them for optimum performance. The Lid Set and Gaskets may need to be replaced due to time and wear. Please check them about once a year. When replacing parts, please record the model number and part name beforehand. Then contact either the store where you purchased the product or Zojirushi Customer Service. Replacement parts may be available for an additional charge.

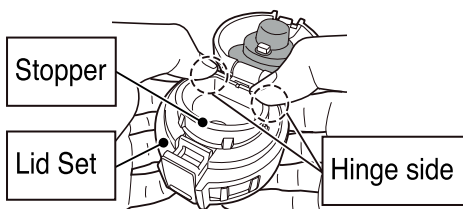
# How to Disassemble the Lid Set:

Be sure to attach the Stopper, Stopper Cover Set, Stopper Gasket, Stopper Cover Gasket and Lid Cover Gasket correctly to prevent malfunction or leaking of beverages.

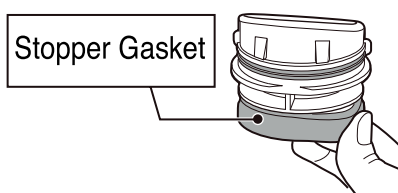
## 1 Remove the Lid Set from the Mug.

## 2 Remove the Stopper.

With the Lid Cover open, hold the Lid Set and press on the Hinge side of the Stopper to remove.

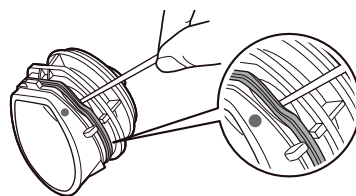


## 3 Remove the Stopper Gasket.



## 4 Remove the Stopper Cover Gasket.

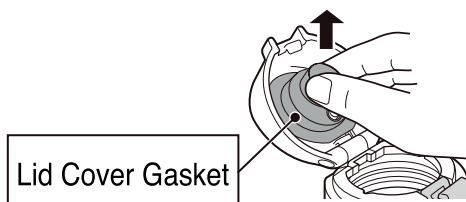
Remove the Stopper Cover Gasket by inserting a small tool such as a toothpick into the small opening near the “●” mark.



● Be careful not to damage the gasket.

## 5 Remove the Lid Cover Gasket.

Pinch the edge of the Lid Cover Gasket as illustrated and pull it toward you to remove.



Please follow the steps in reverse to put the parts back together.