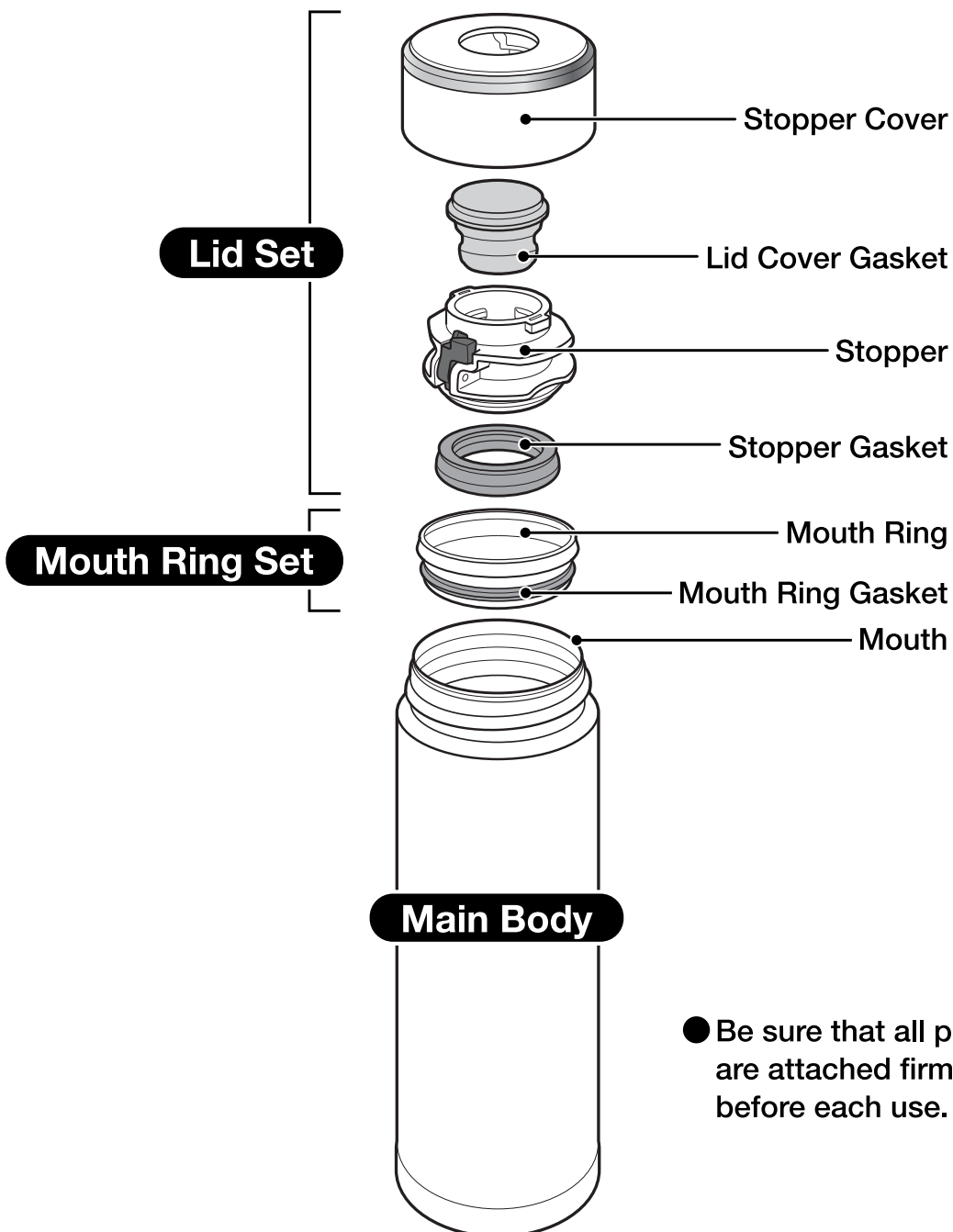


Name of Each Part

● Be sure that all parts are attached firmly before each use.

Please read these instructions before use, and keep for future reference.

Important Safeguards

Do not place near heat sources such as gas stoves, ovens and heaters.

Doing so may cause deformation or discoloration of the Mug.

Do not heat in a microwave.

Doing so may cause sparks, deform or discolor the Mug.

Do not use if the Mug loses its heat retention properties.

The outside of the Main Body may become very hot if hot beverages are poured inside.

Consume beverages within the same day.

Not doing so may cause spoiling. In addition, if left inside for a long period of time, spoiled beverages may produce gas, raising the pressure inside the Main Body and causing the Lid Set to burst or beverages to spill, resulting in injuries and scaldin

Always close the Lid Set securely.

Hot beverages may leak and cause scalding.

This Mug is for holding beverages and keeping them hot or cold. Please do not use for other than intended purposes.

Do not drink out of the Mug while driving.

Doing so may cause scalds or stain the interior of the car or clothes. Attempting to use while driving may also cause serious accidents.

When containing hot beverages:**● Do not shake the Mug.**

Doing so may cause scalds or injury.

● Be careful not to scald yourself when drinking out of the Mug.

Due to its vacuum insulation, the outside of the Mug will not become hot, while hot beverages will remain very hot for many hours. Please drink with caution.

Do not place near open flames (from gas stoves, etc.), on top of electric heaters or IH hot plates, or other IH cooking devices.

Doing so may cause a fire or malfunction.

Important Safeguards Continued

When filling the Mug with sports drinks:

- In order to prevent rusting and/or pinholes, rinse the inside and outside of the Main Body, the Lid Set and the Mouth Ring Set immediately after consumption.
 - Clean the inside using a soft sponge to protect the nonstick coating from being scratched.
-

When using a vehicle cup holder accessory:

- ① **Always keep the Lid Set securely closed when not drinking.**
Beverage may spill if the Mug is tipped over, causing scalds or injury.
 - ② **Make sure the Mug fits into the holder securely before placing it in.**
Do not use the Mug if it does not fit into the holder securely as it may tip over and cause scalds, injury or accidents.
 - ③ **Check that the strength of the cup holder is sufficient to hold the Mug before using.**
The Mug may fall and cause injuries or burns, or stain the interior of the car or clothes if the cup holder does not hold up.
 - ④ **Do not use a hanging-type cup holder that attaches to the window or air vent.**
The cup holder may fall off.
- **The Mug may not fit into some cup holders.**
-

Do not fill the Mug with the following:

- **Dry ice and carbonated drinks:**
Contents may spill out or the pressure may cause the Lid Set to burst, causing injuries.
 - **Liquids high in sodium such as soup and Kōbu-cha:**
Although the liner is made of 18/8 stainless steel and is nonstick coated, salt may cause rust resulting in loss of thermal insulation.
 - **Dairy products and fruit juice:**
If left inside for a long period of time, contents may spoil and produce gas that may cause the Lid Set to burst, causing injuries.
 - **Fruit pulp and tea leaves:**
May become caught on the Stopper Gasket and cause contents to spoil.
-

Do not disassemble the Main Body.

Warnings & Cautions:

Do not allow hot kettles to touch the Mouth Ring or the mouth of the Main Body.

The Mug may tip over, causing scalds.



Be sure that the Stopper Gasket and Lid Cover are attached properly to prevent beverages from leaking.

Do not tilt the Main Body suddenly when drinking.

The beverage may spill and cause scalding or stain clothes.

Always disassemble the Lid Set when washing then wipe dry.

Water may collect between the Stopper Cover, the Lid Cover Gasket or the Stopper, and may drip out if not dried well.

Do not leave a tea bag inside and close the Lid Set.

The tea bag may swell and cause leakage or cause drinks to spill out.

Clean the Stopper, Stopper Gasket, Mouth Ring and Mouth Ring Gasket after every use.

Not doing so may cause decay, mold, odor or discoloration. It may also cause leaks.

Avoid dropping or hitting against hard surfaces.

Damage to the plastic or stainless steel surface of the Mug may reduce its ability to retain heat.

Do not hold the Mug by the Lid Set.

The Mug may drop and cause injuries.

Do not rub the design on the outside of the Main Body strongly.

It may come off.

Do not attach parts other than those specifically for this product.

Doing so may cause leaks or breakage.

Hot tea may discolor if stored for a long period of time. We recommend the use of tea bags and brewing right before consumption.

Do not force large ice cubes in.

Doing so may cause deformation or damage to the product.

Store the Mug upright when carrying inside bags to prevent beverages from spilling.

Attach the Lid Set properly and turn the Mug upside down to make sure contents do not leak.

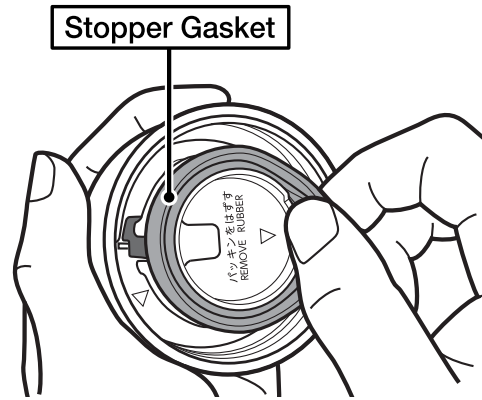
The rattling noise that may be heard when the Main Body is shaken comes from the copper or aluminum foil in the vacuum insulation to increase heat (cold) retention and does not indicate a malfunction.

- The illustrations used in this instruction manual may vary from the actual product you have purchased.

How to Disassemble the Lid Set:

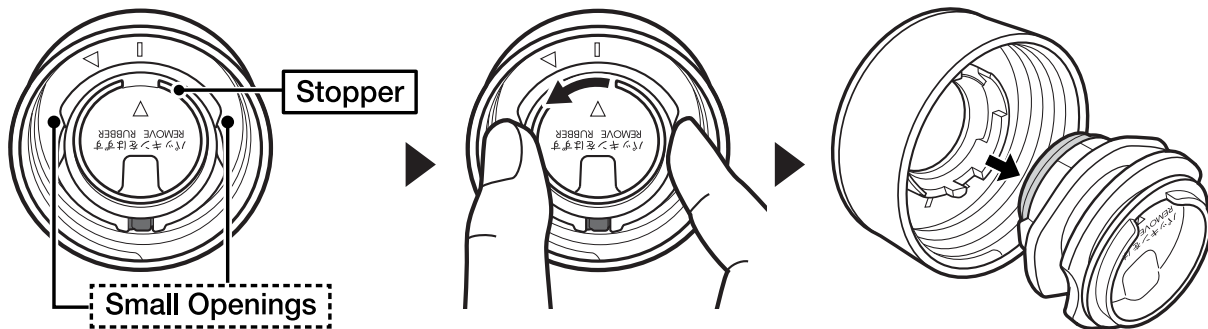
1 Remove the Stopper Gasket.

- The Stopper cannot be removed unless the Stopper Gasket is removed first.



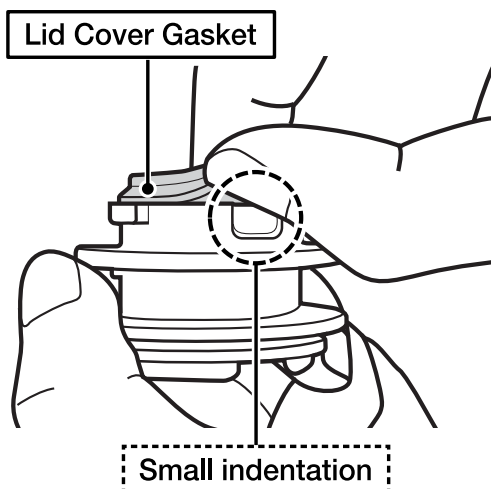
2 Remove the Stopper.

Insert your fingers in the small openings of the Stopper and turn in the direction of the arrow.



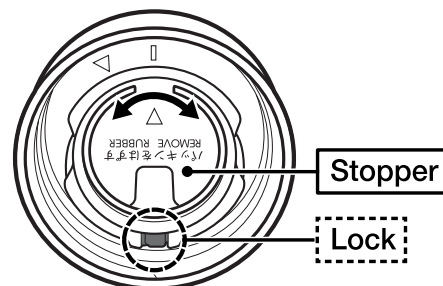
3 Remove the Lid Cover Gasket.

Place your finger over the small indentation in the Stopper, and remove the Lid Cover Gasket.



※ If the Stopper does not turn:

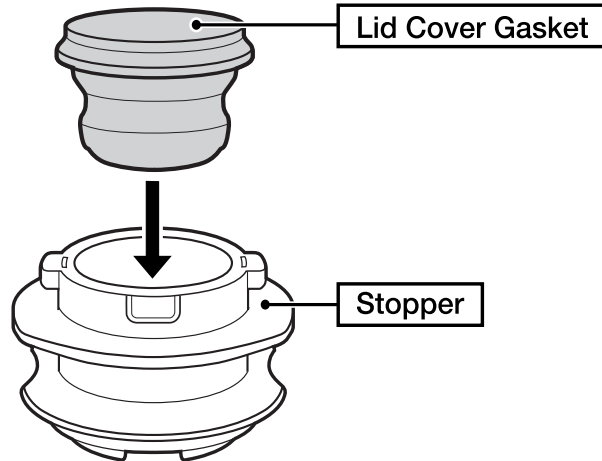
The Lock may not operate properly if clogged. If this happens, rinse the Lid Set under warm water and turn the Stopper left and right as shown in the illustration to remove anything clogging the lock, and the lock should operate normally.



How to Assemble the Lid Set:

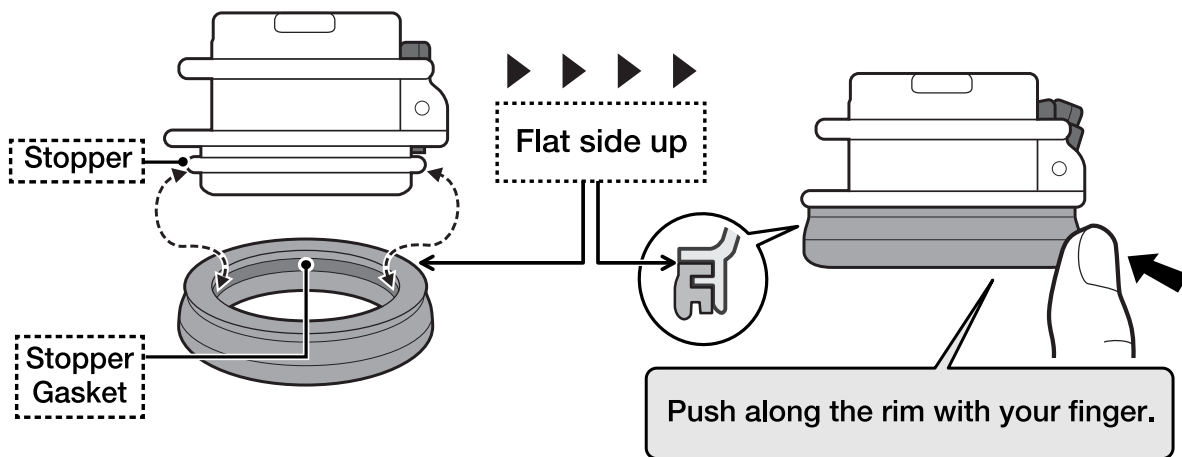
- Be sure to attach the Stopper Cover, Lid Cover Gasket, Stopper and Stopper Gasket correctly to prevent malfunction or leakage.

1 Attach the Lid Cover Gasket.



2 Attach the Stopper Gasket.

Fit the Stopper Gasket to the Stopper as illustrated.

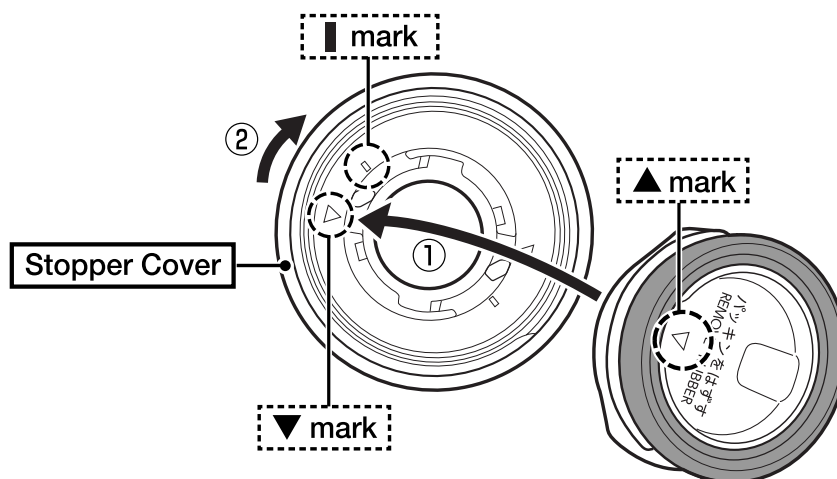


How to Assemble the Lid Set: Continued

3 Attach the Stopper to the Stopper Cover.

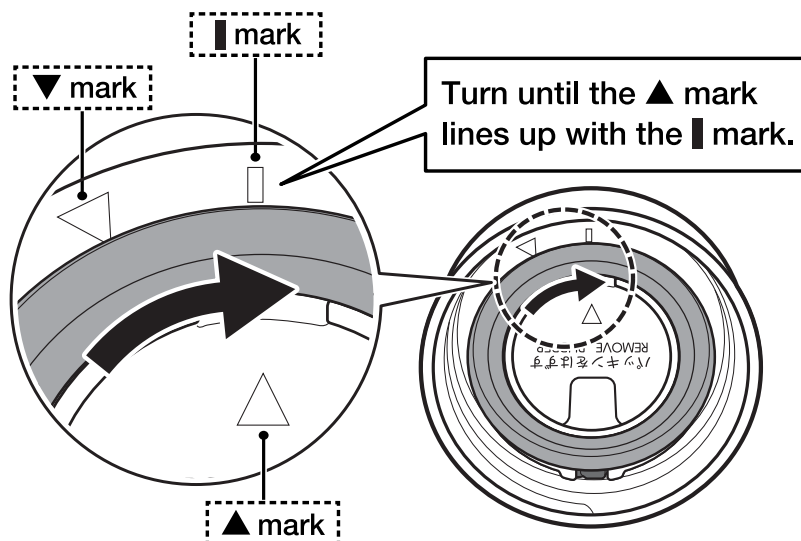
- ① Match the ▲ mark on the Stopper to the ▼ mark on the Stopper Cover and insert the Stopper into the Stopper Cover.
- ② Turn until the ▲ mark reaches the ▮ mark.

● The Stopper cannot be attached without the Stopper Gasket (designed to ensure that the Stopper Gasket is attached).



※ Before attaching to the Main Body

The Stopper is attached properly if it does not turn back in the direction of the ▼ mark when it is lined up with the ▮ mark. (The rotation lock is functioning.) Confirm that it is functioning correctly, then attach the Lid Set to the Main Body.



How to Take Care of Your Mug:

- Clean the product after each use to prevent odors, dirt and mold, and to keep the product sanitary.
- For better usage, please remember to clean after every use.

Exterior, Lid Set and the Mouth Ring Set

- ① Wash with warm water and mild dishwashing liquid using a soft sponge.
- ② Rinse, shake a few times and wipe dry.
 - Remove the Lid Cover Gasket and Stopper Gasket from the Lid Set and the Mouth Ring Gasket from the Mouth Ring before washing.
 - Please use a small brush (sold in stores) if necessary.

Interior

- ① Wash with warm water and mild dishwashing liquid using a soft sponge with handle.
- ② Then rinse and wipe moisture out to dry.

When Cleaning Your Product:

To protect the paint, print or stickers on the outside of the Main Body:

- Do not use a dishwasher or dish-dryer. Do not boil to sanitize.
- Do not use bleach on the outside of the Main Body.
- Do not clean using paint thinner, benzine, metal wire scrub brushes, scrubbing brushes that include abrasive cleansers, polishing powders, cleansers, melamine sponges, or any similar items.
- Do not use chlorine type bleach.
- The Main Body can be wiped off, but do not soak it (leave it) in water.
- Wipe moisture off thoroughly to prevent water stains or rusting.
- Thoroughly wipe off any water between the Lid Cover Gasket and the Stopper.
- If the product is not going to be used for an extended period, wash thoroughly with cold or lukewarm water and dry well. Store the product away from high temperatures and humidity.
High temperatures and humidity may damage the product.

Replacing the Stopper Gasket and Mouth Ring Set:

We take care in only using materials that are safe and hygienic for food contact. However, if plastic parts become damaged or its surface becomes rough, please replace them for optimum performance. The Stopper, Stopper Gasket, Mouth Ring and Mouth Ring Gasket may need to be replaced due to time and wear. Please check them about once a year. When replacing parts, please record the model number and part name beforehand. Then contact either the store where you purchased the product or Zojirushi Customer Service. Replacement parts may be available for an additional charge.

How to Take Care of Your Mug: Continued

To Remove Rust Spots and Water Stains:

You may find rust spots or water stains caused by impurities in the water. To remove these stains, fill the Main Body with hot water with 10% vinegar and let it stand for 30 minutes to an hour without attaching the Lid Set, then wash the interior thoroughly.

To Remove Coffee and Tea Stains:

To remove coffee and tea stains from the interior, the Lid Set and the Mouth Ring Set, we recommend using Zojirushi's cleaning detergent SB-ZA01/SB-ZA01E. Always remove the Lid Set when using SB-ZA01/SB-ZA01E. Contact Zojirushi Customer Service or your local dealer for further information.

SPECIFICATIONS:

Product: STAINLESS MUG

Model No.	Capacity	Weight	Heat Retention (Above)	Cold Retention (Below)
SM-LA36 SM-LB36	0.36 liter (12 oz.)	0.19 kg (7 oz.)	86°C (187°F) @ 1 hr. / 67°C (153°F) @ 6 hrs.	9°C (48°F) @ 6 hrs.
SM-LA48 SM-LB48	0.48 liter (16 oz.)	0.22 kg (8 oz.)	87°C (189°F) @ 1 hr. / 72°C (162°F) @ 6 hrs.	8°C (46°F) @ 6 hrs.
SM-LA60 SM-LB60	0.6 liter (20 oz.)	0.24 kg (9 oz.)	88°C (190°F) @ 1 hr. / 74°C (165°F) @ 6 hrs.	8°C (46°F) @ 6 hrs.

Heat/Cold Retention Testing Conditions:

At a room temperature of 20°C±2°C (68°F±4°F), the Main Body is filled to below the Lid Set with hot or cold water and left standing in an upright position. For heat retention, once the hot water reaches 95°C±1°C (203°F±2°F), the temperature is measured after 1 hour and 6 hours. For cold retention, once the cold water reaches 4°C±1°C (39°F±2°F), the temperature is measured after 6 hours.

Materials: Inner Liner	Stainless Steel (Nonstick Coated)
Exterior	Stainless Steel (Acrylic Resin Painted)
Mouth	Stainless Steel
Mouth Ring	Polypropylene
Stopper	Polypropylene
Gasket	Silicon

Manufacturer: Zojirushi Corporation

Address: 1-20-5 Tenma, Kita-ku, Osaka 530-8511, Japan