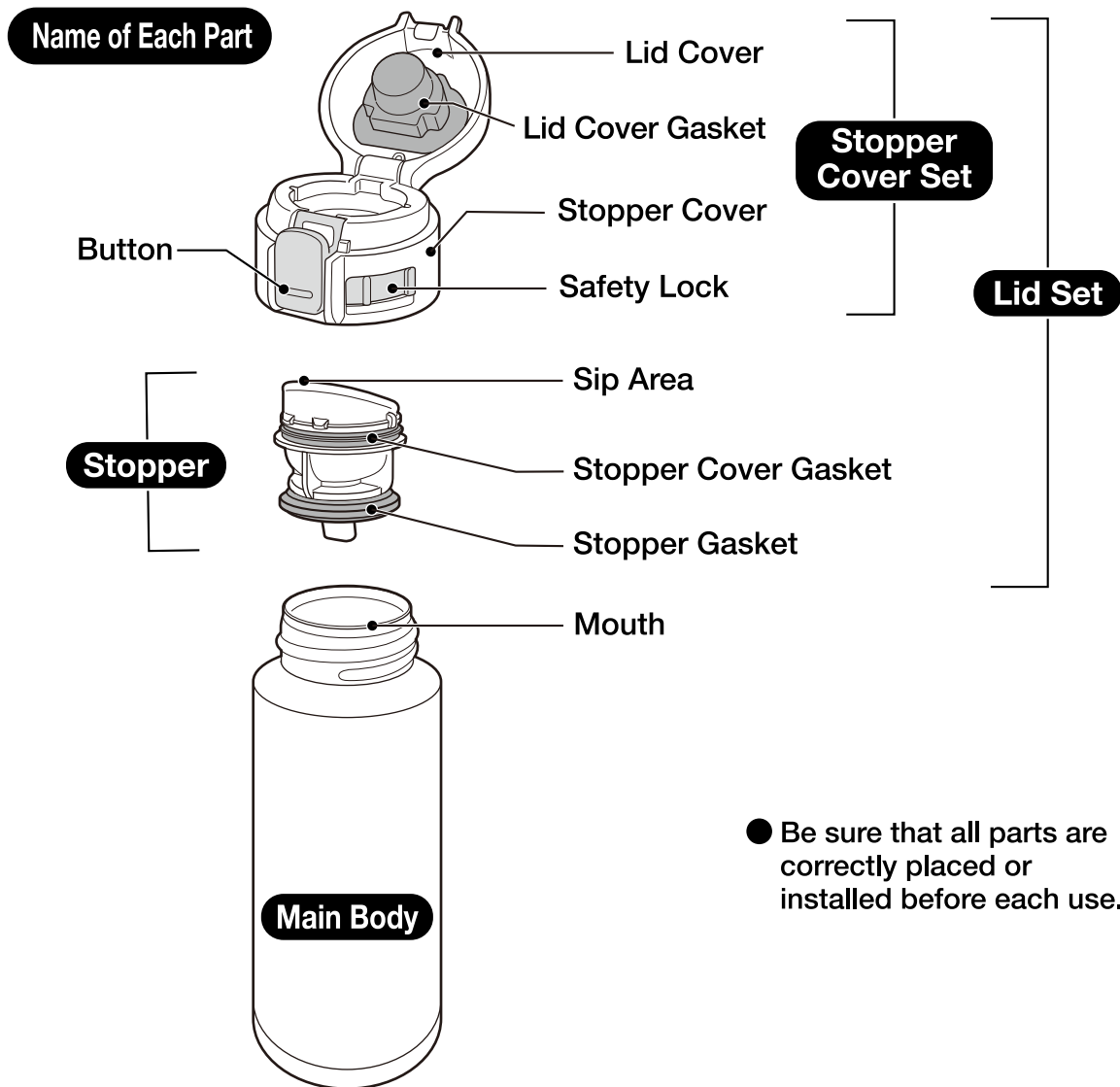




Household Use Only

STAINLESS MUG Model SM-PB/SM-PC Instruction Manual



● Be sure that all parts are correctly placed or installed before each use.

● The illustrations used in this instruction manual may differ from the actual product you have purchased.

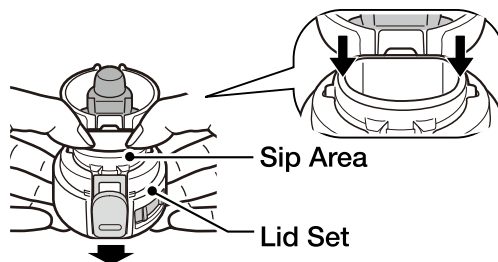
Please read these instructions before use, and keep for future reference.

How to Disassemble the Lid Set:

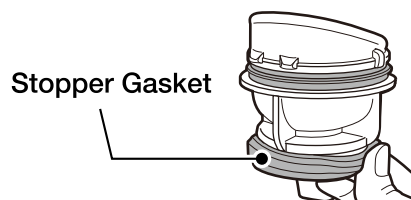
- When you first use the product, there may be a plastic smell. However, this will become less noticeable with use.

1 Remove the Stopper.

Hold the Lid Set as illustrated while the Lid Cover is open, then push the Stopper downward to remove.

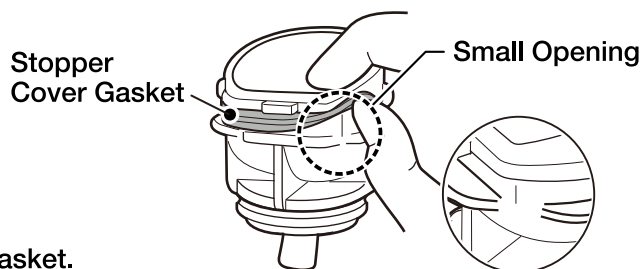


2 Remove the Stopper Gasket.



3 Remove the Stopper Cover Gasket.

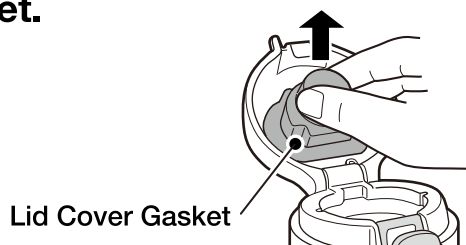
Place your finger to the small opening on the Stopper and gently pull the Stopper Cover Gasket off.



- Be careful not to damage the gasket.

4 Remove the Lid Cover Gasket.

Pinch the edge of the Lid Cover Gasket as illustrated and pull it toward you to remove.

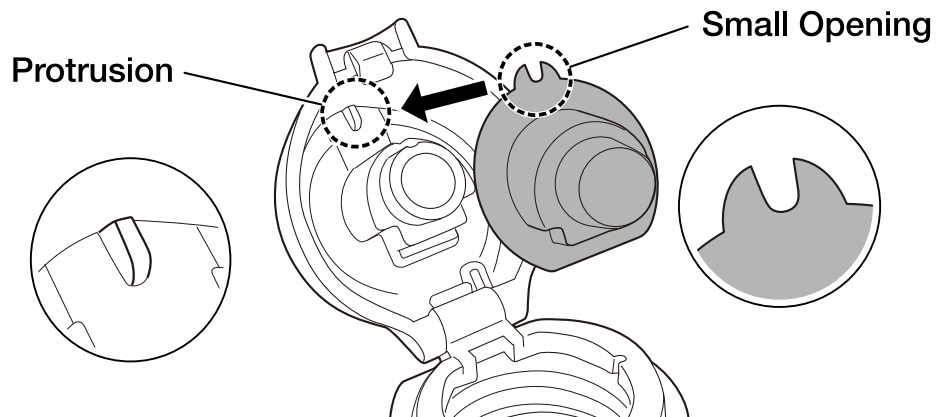


How to Assemble the Lid Set:

- Be sure to attach the Stopper Cover Set, Stopper and Gaskets correctly to prevent malfunction or leaking of beverages.

1 Attach the Lid Cover Gasket.

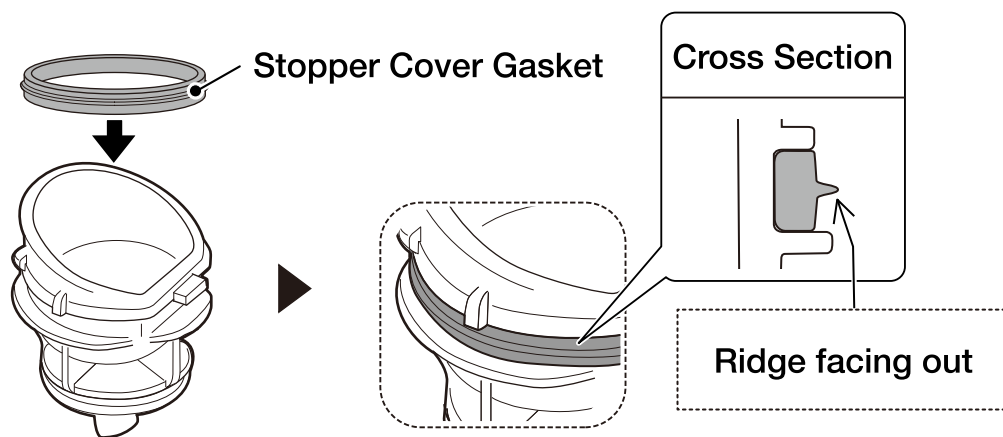
Align the Small Opening on the Lid Cover Gasket with the protrusion on the Lid Cover and press to attach.



- Be sure to set the Lid Cover Gasket before use.

2 Attach the Stopper Cover Gasket.

Attach the Stopper Cover Gasket with the ridge facing out.

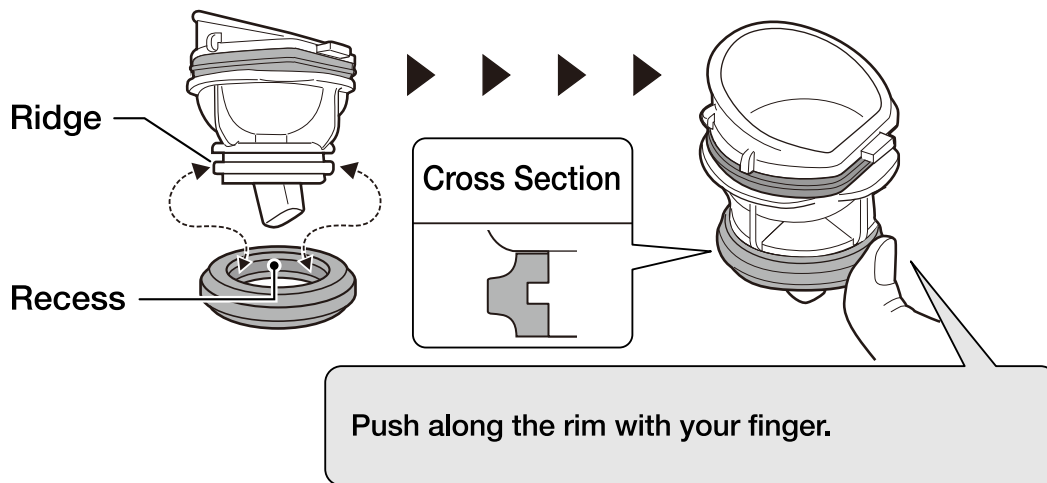


How to Assemble the Lid Set: continued

- Be sure to attach the Stopper Cover Set, Stopper and Gaskets correctly to prevent malfunction or leaking of beverages.

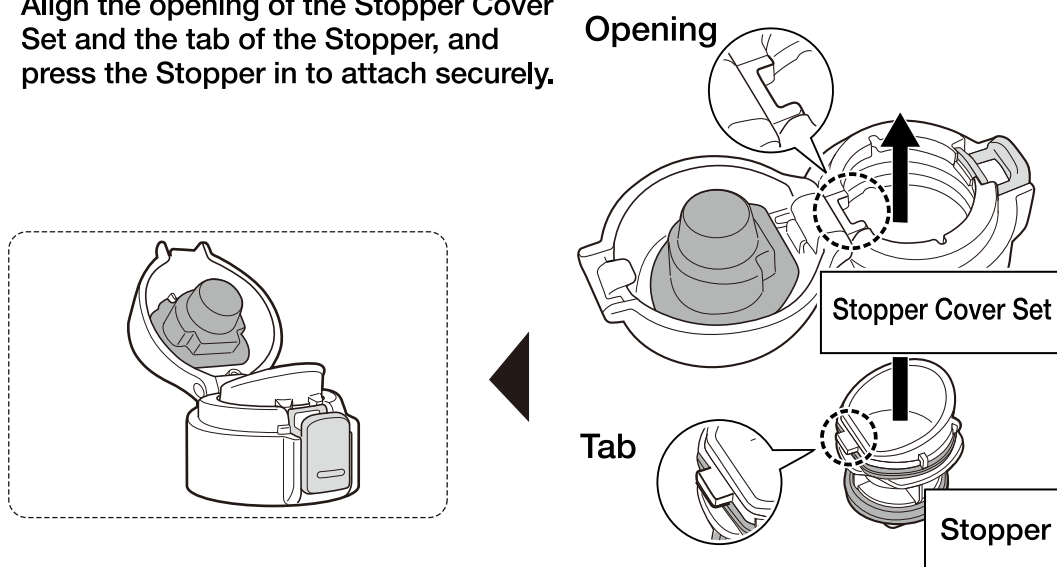
3 Attach the Stopper Gasket.

Line up the recess in the Stopper Gasket with the ridge on the Stopper, and, applying pressure from the outside in, push it into place.



4 Attach the Stopper.

Align the opening of the Stopper Cover Set and the tab of the Stopper, and press the Stopper in to attach securely.



Important Safeguards

- Please follow these instructions to prevent scalding, deterioration and discoloration of beverages, as well as malfunction and staining of the Mug.

Do not allow infants or small children to use this product. Keep out of the reach of infants and small children.

Mishandling may cause injury or scalding.

Always make sure that the Gaskets are attached during use.

Contents may leak and cause scalding or stains.

Do not attach parts other than those specifically designed for this product.

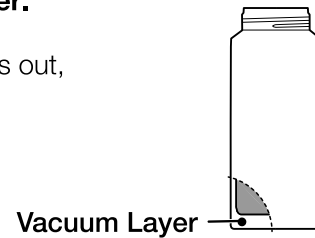
Doing so may cause leaks or breakage.

Do not use if the Mug loses its heat retention properties.

The outside of the Mug may become very hot if hot beverages are poured inside.

Do not use if water enters the interior of the Vacuum Layer.

In this case, the heat-retaining performance may deteriorate, resulting in a risk of burns. In addition, if the internal water seeps out, drinking it may cause illness.

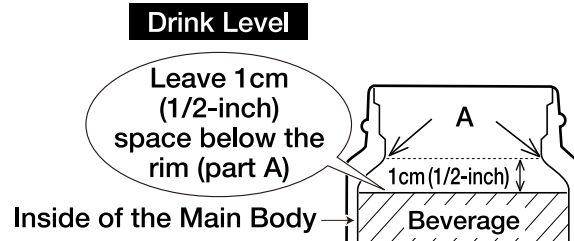


Be sure to set the Lid Set and close the Lid Cover securely after use.

Contents may leak and cause scalding or stains.

Leave 1cm (1/2-inch) room on top when filling the Main Body.

Contents may overflow when placing the Lid Set.



When containing hot beverages:

- **Drink slowly without tilting the Mug suddenly.**

There is a possibility that the beverage may spill and cause burns.

- **Do not shake the Mug.**

Doing so may cause scalds or injury.

- **Be careful not to scald yourself when drinking out of the Mug.**

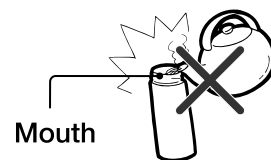
Due to its vacuum insulation, the outside of the Mug will not become hot, while the beverages inside will remain very hot for many hours. Please drink with caution.

- **The pressure inside the Mug may rise, making it difficult to remove the Lid Set. If that happens, open the Lid Cover once, and remove the Lid Set.**

Forcibly removing the Lid Set may make it fly off abruptly, causing injuries or burns.

Do not allow hot kettles to touch the Mouth of the Main Body.

The Main Body may tip over, causing scalds.



Important Safeguards continued

- Please follow these instructions to prevent scalding, deterioration and discoloration of beverages, as well as malfunction and staining of the Mug.

Do not fill with beverages while the Lid Set is attached.

Doing so may cause beverages to overfill and may cause burning and scalding.

Do not place near heat sources such as gas stoves, ovens and heaters.

Doing so may cause deformation or discoloration of the Mug.

Do not open the Lid Cover with the Mug close to your face or tilted toward you.

Hot beverages may suddenly come out or spew out and may cause scalding.

Do not drink out of the Mug while driving.

Doing so may cause scalds or stain the interior of the car or clothes. Attempting to use while driving may also cause serious accidents.

When using a vehicle cup holder accessory:

- ① Always keep the Lid Cover securely closed when not drinking.
- ② Make sure the Mug fits into the holder securely before placing it in.
- ③ Check that the strength of the cup holder is sufficient to hold the Mug before using.
- ④ Do not use a hanging-type cup holder that attaches to the window or air vent.

If the product falls or tips over, or the cup holder falls off or becomes damaged, this may cause burns, injuries, or accidents. In addition, the interior of the car or clothes may become stained.

- The Mug may not fit into some cup holders.

Do not hold the Mug by the Lid Set or the Lid Cover when carrying.

The Mug may fall and cause injuries.

Do not disassemble the Main Body.

Do not heat in a microwave.

Doing so may cause sparks, deformation or discoloration of the Mug.

Do not place near open flames (from gas stoves, etc.), on top of electric heaters or IH hot plates, or other IH cooking devices.

Doing so may cause a fire or malfunction.

Do not fill the Mug with the following:

- **Dry ice and carbonated drinks:** Contents may spill out or the pressure may cause the Lid Set to burst, causing injuries.
- **Liquids high in sodium such as soup and Kobu-cha:** Although the liner is made of 18/8 stainless steel and is nonstick coated, salt may cause rust resulting in loss of thermal insulation.
- **Dairy products and fruit juice:** If left inside for a long period of time, contents may spoil and produce gas that may cause the Lid Set to burst, causing injuries.
- **Fruit pulp and tea leaves:** May become caught on the Stopper Gasket and cause contents to spoil.

Consume beverages within the same day.

Not doing so may cause spoiling. In addition, if left inside for a long period of time, spoiled beverages may produce gas, raising the pressure inside the Mug and causing the Lid Set to burst or beverages to spill, resulting in injuries and scalding.

This Mug is for storing and keeping beverages hot or cold. Please do not use for other than intended purposes.

Warnings & Cautions

Avoid dropping or hitting against hard surfaces.

Damage to the plastic or stainless steel surface of the Mug may reduce its ability to retain heat.

Clean the Main Body after every use.

Not cleaning thoroughly may cause the Main Body to rust, beverages to spoil, or cause pinholes.

Do not remove the sticker on the bottom of the Main Body.

Doing so may cause rust or holes.



When filling the Mug with sports drinks:

- In order to prevent rusting and/or pinholes, rinse the inside and outside of the Main Body and the Lid Set immediately after consumption.
 - Clean the inside using a soft sponge to protect the nonstick coating from getting scratched.
-

Do not force large ice cubes in. Break them into smaller pieces instead.

Doing so may cause deformation or damage to the product.

Always clean the Stopper and Gaskets thoroughly after use.

Not doing so may cause decay, mold, odor or discoloration. It may also cause leaks.

If a cold beverage is put into the product under highly humid conditions, condensation may form on the Lid Set. Stand the product upright when placing it in bags.

Always disassemble the Lid Set when washing and wipe dry (see p.2).

Water may drip out if it is not dried well.

This product is designed to be drunk from directly. If it is used for pouring, the beverage may splash.

Do not leave a tea bag inside and set the Lid Set.

The tea bag may swell and cause leakage or cause drinks to spill out.

Store the Mug upright when carrying inside bags to prevent beverages from spilling.



Do not scratch or rub the design on the outside of the Main Body strongly using fingernails or hard objects.

This may cause the design to come off.

Hot tea may discolor if stored for a long period of time. We recommend the use of tea bags and brewing right before consumption.

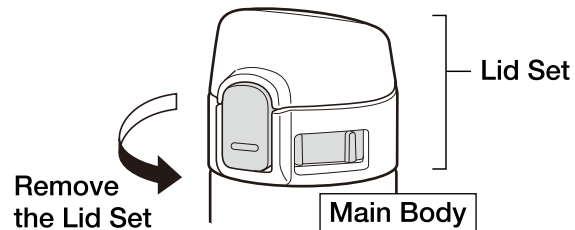
The rattling noise that may be heard when the Main Body is shaken comes from the copper or aluminum foil in the vacuum insulation to increase heat (cold) retention and does not indicate a malfunction.

How to Use:

- Follow the instructions for care and wash the Lid Set, the inside and outside of the Main Body thoroughly before use.

1 Remove the Lid Set from the Main Body.

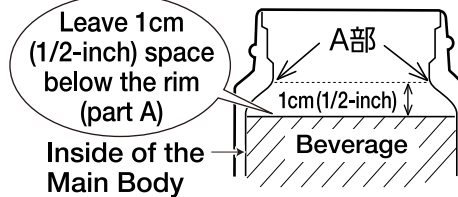
Remove the Lid Set from the Main Body by turning it counterclockwise as illustrated.



2 Fill the Main Body with beverage.

For better heat retention, preheat or precool the Main Body with hot water (cold water) for about one minute, and then fill it with your beverage.

Drink Level

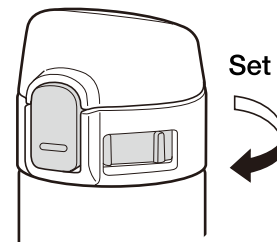


3 Set the Lid Set securely.


Close the Lid Cover, lock the Safety Lock* then turn the Lid Set clockwise as illustrated to set.

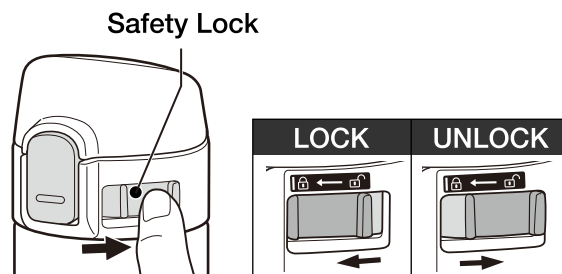
* See illustration 4 below.

- Confirm that the Gaskets are correctly attached before using. (If not correctly attached, the beverage may leak.)
- Firmly close the Lid Set with the Main Body in an upright position.
- Attach the Lid Set properly and turn the Mug upside down to make sure contents do not leak.



4 Unlock the Safety Lock.

Slide the Safety Lock to the right () to unlock.

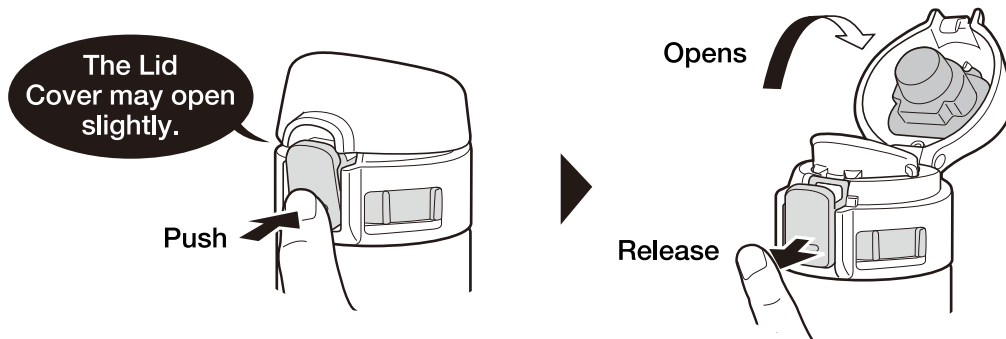


How to Use: continued

- Follow the instructions for care and wash the Lid Set, the inside and outside of the Main Body thoroughly before use.

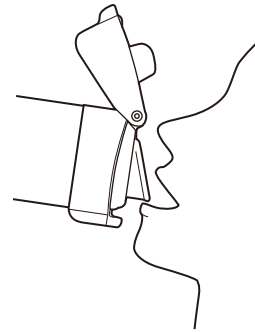
5 Open the Lid Cover.

Push the Button and release to open the Lid Cover.



6 Drink the beverage.

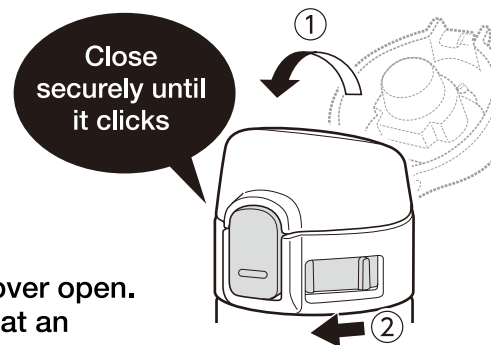
- Do not tilt the Mug suddenly when drinking.
(The beverage may spill and cause scalding or stain clothes.)



7 Close the Lid Cover and lock.

- ① With the Mug at an upright position, close the Lid Cover until it clicks.
- ② Slide the Safety Lock all the way to the left to lock (see p.8 illustration 4).

- Do not leave the Mug with the Lid Cover open.
- Always close the Lid Cover securely at an upright position.



How to Take Care of Your Mug:

- Clean the product after each use to prevent odors and mold, and to keep the product sanitary.
- Always disassemble the product before cleaning. (see p.2)

Exterior Lid Set

- ① Wash with warm water and mild dishwashing liquid using a soft sponge.
- ② Rinse, shake a few times and wipe dry.
 - When washing the Lid Set, disassemble it first then wash and dry.
 - Use a small brush sold in stores if necessary.

Interior

- ① Wash with warm water and mild dishwashing liquid using a soft sponge with handle.
- ② Then rinse and wipe moisture out to dry.

When Cleaning Your Product:

- Do not use a dishwasher or dish-dryer. Do not boil to sanitize.
- Do not clean using paint thinner, metal wire scrub brushes, scrubbing brushes that include abrasive cleaners, polishing powders, cleansers, melamine sponges, or any similar items.
- Do not use chlorine-based bleach. In addition, do not use any kind of bleach, even non-chlorine-based, to clean the outside of the Main Body. It may damage the paint, print, or stickers on the Main Body.
- Do not soak in water for an extended period of time.
- Wipe moisture off thoroughly to prevent water stains or rusting.
- If the product is not going to be used for an extended period, wash thoroughly with cold or lukewarm water and dry well. Store the product away from high temperatures and humidity. High temperatures and humidity may damage the product.

To Remove Rust Spots and Water Stains:

You may find rust spots or water stains caused by impurities in the water. To remove these stains, fill the Main Body with hot water with 10% vinegar and let it stand for 30 minutes to an hour without attaching the Lid Set, then wash the interior thoroughly.

To Remove Coffee and Tea Stains:

To remove coffee and tea stains from the interior and the Lid Set, we recommend using Zojirushi's cleaning detergent [SB-ZA01/SB-ZA01E]. Always remove the Lid Set when using [SB-ZA01/SB-ZA01E]. Contact Zojirushi Customer Service or your local dealer for further information.

Replacing the Stopper and Gaskets:

We take care in only using materials that are safe and hygienic for food contact. However, if plastic parts become damaged or its surface becomes rough, please replace them for optimum performance. The Stopper and other consumable parts may need to be replaced due to time and wear. Please check them about once a year. When replacing parts, please record the model number and part name beforehand. Then contact either the store where you purchased the product or Zojirushi Customer Service. Replacement parts may be available for an additional charge.