



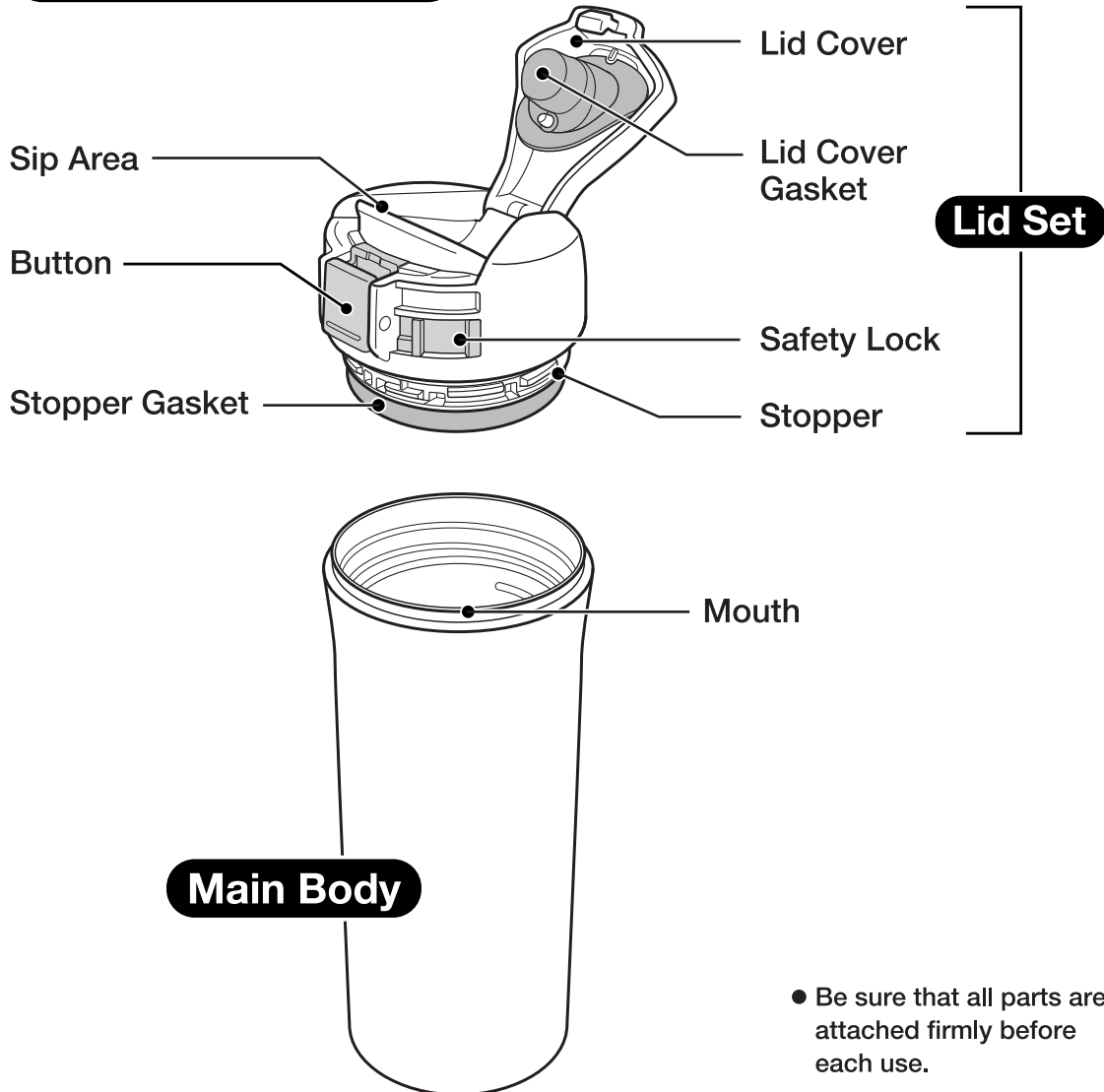
Household Use Only

STAINLESS MUG

Model No. SM-YAE/SM-YAF

Instruction Manual

Name of Each Part



- Be sure that all parts are attached firmly before each use.

● The illustrations used in this instruction manual may vary from the actual product you have purchased.

Please read these instructions before use, and keep for future reference.

SM-YAE / SM-YAF (E/K) / A

<p>Do not allow infants or small children to use this product. Keep out of the reach of infants and small children. Mishandling may cause injury or scalding.</p>	<p>Do not use if the Mug loses its heat retention properties. The outside of the Main Body may become very hot if hot beverages are poured inside.</p>
	<p>Do not open the Lid Cover with the Mug close to your face or tilted toward you. Hot beverages may suddenly come out or spew out and may cause scalding.</p>
	<p>Do not heat in a microwave. Doing so may cause sparks, deformation or discoloration of the Mug.</p>
	<p>Do not drink out of the Mug while driving. Doing so may cause scalds or stain the interior of the car or clothes. Attempting to use whil</p>

Important Safeguards • Please follow these instructions to prevent scalding, deterioration and discoloration of beverages, as well as malfunction and staining of the Mug.

Do not disassemble the Main Body.

Consume beverages within the same day to prevent from spoiling.

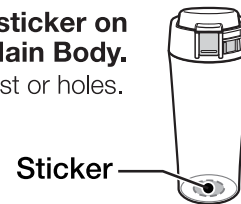
Beverages left inside for a long period of time may spoil and produce gas that may cause the Lid Set to burst or beverages to spill, causing injuries and scalds.

Do not place near heat sources such as gas stoves, ovens and heaters.

Doing so may cause deformation or discoloration of the Mug.

Do not remove the sticker on the bottom of the Main Body.

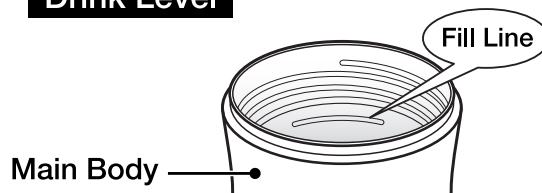
Doing so may cause rust or holes.



Do not fill beverages above the fill line.

Filling above the line may cause the contents to overflow when the Lid Set is tightened, and may be cause burning or scalding.

Drink Level



When using a vehicle cup holder accessory:

- ① **Always keep the Lid Cover securely closed when not drinking.**
Beverage may spill if the Mug is tipped over, causing scalds or injury.
 - ② **Make sure the Mug fits into the holder securely before placing it in.**
Do not use the Mug if it does not fit into the holder securely as it may tip over and cause scalds, injury or accidents.
 - ③ **Check that the strength of the cup holder is sufficient to hold the Mug before using.**
The Mug may fall and cause injuries or burns, or stain the interior of the car or clothes if the cup holder does not hold up.
 - ④ **Do not use a hanging-type cup holder that attaches to the window or air vent.**
The cup holder may fall off.
- **The Mug may not fit into some cup holders.**

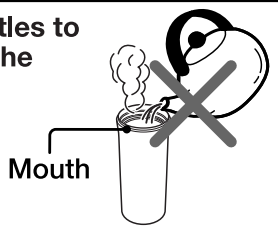
When filling the Mug with sports drinks:

- **In order to prevent rusting and/or pinholes, rinse the inside and outside of the Main Body and the Lid Set immediately after consumption.**
- **Clean the inside using a soft sponge to protect from getting scratched.**

**This Mug is for storing and keeping beverages hot or cold.
Please do not use for other than intended purposes.**

Warnings & Cautions

Do not allow hot kettles to touch the Mouth of the Main Body.
 The Mug may tip over, causing scalds.



After cleaning the Lid Set, shake it well to remove excess water, and wipe thoroughly.
 Water may drip out if it is not dried well.

Do not leave a tea bag inside and set the Lid Set.
 The tea bag may swell and cause leakage or cause drinks to spill out.

The rattling noise that may be heard when the Main Body is shaken comes from the copper or aluminum foil in the vacuum insulation to increase heat (cold) retention and does not indicate a malfunction.

Hot tea may discolor if stored for a long period of time. We recommend the use of tea bags and brewing right before consumption.

Avoid dropping or hitting against hard surfaces.
 Damage to the plastic or stainless steel surface of the Mug may reduce its ability to retain heat.

Do not force large ice cubes in. Break them into smaller pieces instead.
 Doing so may cause deformation or damage to the product.

Do not hold the Mug by the Lid Set or the Lid Cover when carrying.
 The Mug may fall and cause injuries.

Always clean the Lid Set, Lid Cover Gasket and Stopper Gasket thoroughly after use.
 Not doing so may cause decay, mold, odor or discoloration. It may also cause leaks.

Do not scratch or rub the design on the outside of the Main Body strongly using fingernails or hard objects.
 This may cause the design to come off.

Do not attach parts other than those specifically designed for this product.
 Doing so may cause leaks or breakage.

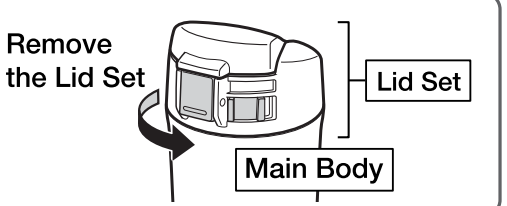
Placing ice cubes in the Mug may cause the internal pressure to decrease and the Lid Cover Gasket may come off when opening the Lid Cover. If this happens, please reattach the Lid Cover Gasket.

If a cold beverage is put into the product under highly humid conditions, condensation may form on the Lid Set. Stand the product upright when placing it in bags.

When the Mug contains hot beverages, the upper portion of the Main Body and/or the Lid Set may become warm to the touch. This is normal and does not indicate a malfunction.

How to Use: - Rinse the Lid Set and the inside of the Mug thoroughly with lukewarm water.

1 Remove the Lid Set from the Main Body.
 Remove the Lid Set from the Main Body by turning it counterclockwise as illustrated.



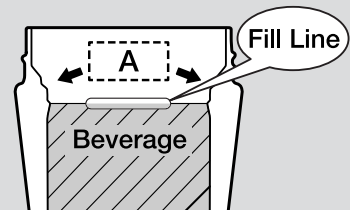
How to Use:

2 Fill the Mug with beverage.

- Overfilling the Mug may cause the contents to overflow when the Lid Set is tightened. Only fill beverages below the fill line.



- Wipe clean any beverage remaining on A (above the fill line). (to prevent leakage of contents after closing the Lid Set)
- Heat/cool beverages thoroughly before pouring them into the Mug.



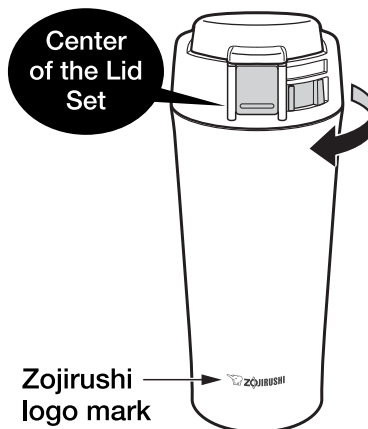
For better heat retention, preheat or precool the Main Body with hot water (cold water) for about one minute, and then fill it with your beverage.

3 Close the Lid Set.

Close the Lid Cover, lock the Safety Lock*, and turn the Lid Set clockwise as illustrated to close.

*See pg.6 illustration 4.

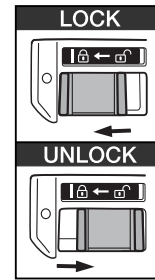
- Confirm that the Lid Cover Gasket and Stopper Gasket are correctly attached before using. (If not correctly attached, the beverage may leak.)
- Firmly attach the Lid Set to the upright Main Body, lining up the Zojirushi logo mark with the front of the Lid Set.
- Attach the Lid Set properly and turn the Mug upside down to make sure contents do not leak.



How to Use: continued

4 Unlock the Safety Lock.

Slide the Safety Lock to the right (🔓) to unlock.



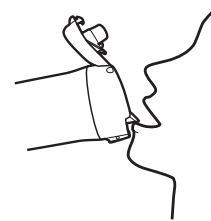
5 Open the Lid Cover.

Push the Button and release to open the Lid Cover.



6 Drink the beverage.

- Do not tilt the Mug suddenly when drinking. (The beverage may spill and cause scalding or stain clothes.)

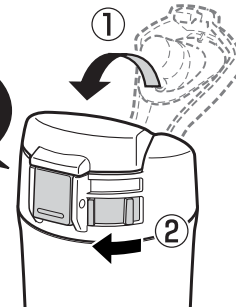


7 Close the Lid Cover and lock.

- ① With the Mug at an upright position, close the Lid Cover until it clicks.
- ② Slide the Safety Lock to the left to lock (see pg.6 illustration 4).

- Do not leave the Mug with the Lid Cover open.
- Always close the Lid Cover securely at an upright position.

Close securely until it clicks.



- Store the Mug upright when carrying inside bags to prevent beverages from spilling.



How to Remove and Attach Parts:

- Be sure to attach the Lid Cover Gasket and Stopper Gasket correctly to prevent malfunction or leakage.

Caution The Sip Area and the Stopper cannot be detached from the Lid Set.

■ To Remove

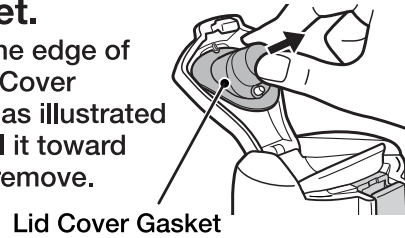
1 Remove the Lid Set from the Main Body.

2 Remove the Stopper Gasket.



3 Remove the Lid Cover Gasket.

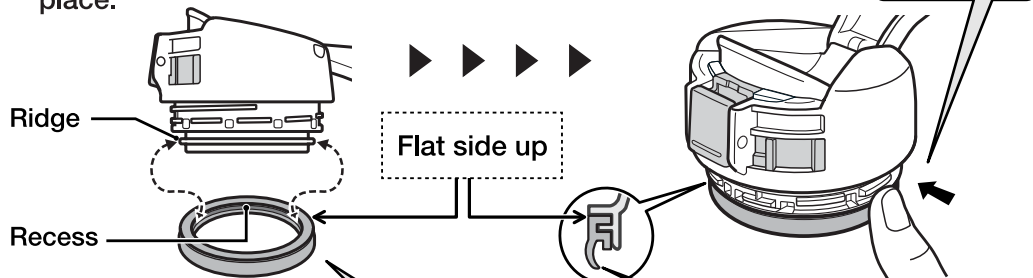
Pinch the edge of the Lid Cover Gasket as illustrated and pull it toward you to remove.



■ To Attach

1 Attach the Stopper Gasket.

Line up the recess in the Stopper Gasket with the ridge on the Stopper and apply pressure from the outside in to push it into place.



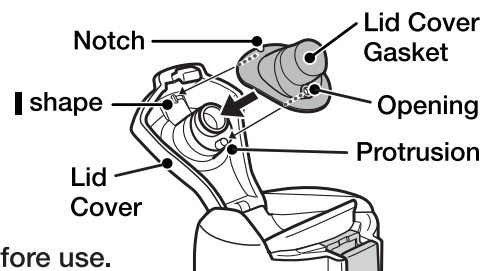
Be careful with the top and the bottom of the gasket and be sure to set correctly. Not doing so may cause beverages to leak.

Always attach with this part facing down.

2 Attach the Lid Cover Gasket.

Align the opening on the Lid Cover Gasket with the protrusion on the Lid Cover and press to attach. Align the notch on the Lid Cover Gasket with the I shape on the inside of the Lid Cover.

- Be sure to set the Lid Cover Gasket before use.



How to Take Care of Your Mug: ● Clean the product after each use to prevent odors and mold, and to keep the product sanitary.

Exterior Lid Set

- ① Wash with warm water and mild dishwashing liquid using a soft sponge.
 - Disassemble the Lid Cover Gasket and Stopper Gasket before washing the Lid Set. (See pg.7)
 - Use a small brush sold in stores if necessary.
 - To wash the interior of the Stopper, fill the sink or a container with water, soak the Lid Set, and then rinse.
- ② Rinse, shake a few times and wipe dry.
 - After cleaning the Lid Set, shake it well to remove excess water. Wipe any water remaining on the surface thoroughly. (If not, the beverage may leak.)

Interior

- ① Wash with warm water and mild dishwashing liquid using a soft sponge with handle.
- ② Then rinse and wipe moisture out to dry.

When Cleaning Your Product:

To protect the paint, print or stickers on the outside of the Main Body:

- Do not use a dishwasher or dish-dryer. Do not boil to sanitize.
- Do not use bleach on the outside of the Main Body.
- If the product is not going to be used for an extended period, wash thoroughly with cold or lukewarm water and dry well. Store the product away from high temperatures and humidity.

High temperatures and humidity may damage the product.
- Do not clean with thinner, benzene, abrasive cleaners or other harsh cleaners.
- Do not use chlorine type bleach.
- The product is washable, but do not soak it in water for an extended period of time.
- Wipe moisture off thoroughly to prevent water stains or rusting.

Replacing the Lid Set (Lid Cover Gasket and Stopper Gasket):

We take care in only using materials that are safe and hygienic for food contact. However, if plastic parts become damaged or its surface becomes rough, please replace them for optimum performance. The Stopper may need to be replaced due to time and wear. Please check them about once a year. When replacing parts, please record the model number and part name beforehand. Then contact either the store where you purchased the product or Zojirushi Customer Service. Replacement parts may be available for an additional charge.

How to Take Care of Your Mug: continued

To Remove Rust Spots and Water Stains:

You may find rust spots or water stains caused by impurities in the water. To remove these stains, fill the Main Body with hot water with 10% vinegar and let it stand for 30 minutes to an hour without attaching the Lid Set, then wash the interior thoroughly. (See pg.8 “How to Take Care of Your Mug.”)

To Remove Coffee and Tea Stains:

To remove coffee and tea stains from the interior and the Lid Set, we recommend using Zojirushi’s cleaning detergent [SB-ZA01E]. Always remove the Lid Set when using SB-ZA01E. Contact Zojirushi Customer Service or your local dealer for further information.

SPECIFICATIONS:

Product: STAINLESS MUG

Model No.	Capacity	Weight	Heat Retention (Above)	Cold Retention (Below)
SM-YAE48	16 oz.	11 oz.	178°F (81°C) @ 1 hr.	50°F (10°C) @ 6 hrs.
SM-YAF48	(0.48 liter)	(0.3 kg)	133°F (56°C) @ 6 hrs.	

Heat/Cold Retention Testing Conditions:

At a room temperature of 68°F±4°F (20°C±2°C), the Main Body is filled to below the Lid Set with hot or cold water and left standing in an upright position. For heat retention, once the hot water reaches 203°F±2°F (95°C±1°C), the temperature is measured after 1 hour and 6 hours.

For cold retention, once the cold water reaches 39°F±2°F (4°C±1°C), the temperature is measured after 6 hours.

Materials: Inner Liner	Stainless Steel
Exterior	Stainless Steel (Acrylic Resin Painted)
Mouth	Stainless Steel
Stopper	Polypropylene
Lid Cover	Polypropylene
Gasket	Silicon

Manufacturer: Zojirushi Corporation

Address: 1-20-5 Tenma, Kita-ku, Osaka 530-8511, Japan