



Household Use Only

STAINLESS MUG

Model No. **SM-EAE** Instruction Manual

Please read before use. Keep the instructions for future references.

How to Use

Before use, rinse the Lid Set, Mouth Ring Set, and the interior of the Mug thoroughly with luke warm water. Be sure that the Seal Rubber and the Mouth Ring Gasket are attached properly. (It may cause drinks to leak)

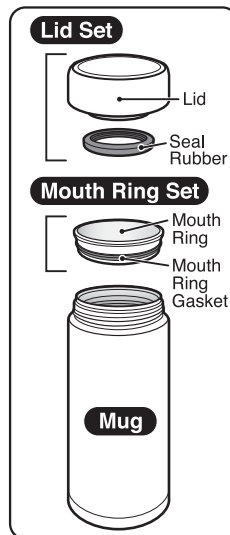
- 1 Remove the Lid Set from the Mug turning it counter-clockwise.

- 2 Fill up the Mug with drinks and close the Lid Set securely.

- Close the Lid Set securely.

Preheat or precool the mug before filling with your beverage for better heat retention.

Filling up the Mug with too much drink may cause leakage. If this happens, discard some amount of drinks and close the Lid Set.
NOTE: See next page "Drink Level" for further details.



Please follow the instructions

(This product is for keeping beverages hot or cold. Do not use for other purposes.)

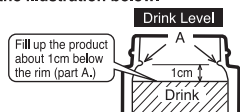
Please follow the following instructions to avoid scalding, deterioration and discoloration of drinks, as well as malfunction and staining of the product.

Keep the product away from the reach of infants.

It may cause injury or scalding.



Keep the drink level as shown in the illustration below.



Be careful not to over fill the Mug. Over filling may cause leakage.

Always use with the Seal Rubber and the Mouth Ring Gasket attached.

Usage without the Seal Rubber and the Mouth Ring Gasket may cause leaking and/or scalding.

Do not bring the Mug near heat sources such as gas heaters or cooking stoves.

Doing so may cause deformation or discoloration of the product.

When using the drink holder of the vehicle:

- ① **Always keep the Lid Set securely closed when not drinking.**
Beverages may spill if the Mug is tipped over, causing scalding and injury.
 - ② **Be sure that the Mug fits into the holder securely before placing it in the holder.**
If the Mug does not fit securely, beverages may spill when the Mug tips over and cause scalding and injury.
 - ③ **Check if the strength of the holder is sufficient to hold the Mug before use.**
If it is not sufficient, the holder may come off or break and tip the Mug over resulting in scalding, stains on car interior or on clothing.
 - ④ **When using a portable drink holder, do not use a hanging-type holder.**
Do not use a holder that is hung from the window or from the air conditioner as the drink holder may slip off.
- Depending on the type of the drink holders, the Mug may not fit in.

● The illustration used in this Instruction Manual and the actual product may vary.

Be careful not to scald yourself when the product contains hot beverages.

Due to the high level thermal efficiency, the exterior of the product will not be hot even if the product contains hot beverages.



Do not use the product if the thermal insulation is lost.

The outside of the product may become hot and cause scalds if it is filled with hot beverages.

Do not microwave the Mug.

It may cause sparks and be dangerous. It may also cause its deformation and discoloration.

Always close the Lid securely.

Hot drinks may leak and cause scalding.

Do not use while driving.

May cause scalds and may also stain the interior of the car or your clothes. Attempting to use while driving the car may cause serious accidents.

Clean the Mug after every use. Not doing so may cause the Mug to rust or create pinholes in it, or cause beverages to spoil.

Finish the drink within the day.

Leaving drinks for a long period of time may cause the drinks to spoil, create gas which increases inner pressure and the Lid may pop off or drinks may splash out causing scalds and injury.

Do not fill the Mug with the following:

- Dry ice and carbonated drinks: contents may spill out or the pressure may cause the stopper to burst, causing injuries.
- Liquids containing salt such as soup or Kobu-cha: although the liner is made of 18/8 stainless steel and is nonstick coated, salt may cause rust resulting in loss of thermal insulation.
- Dairy products and fruit juice: if left inside for a long period of time, contents may spoil and produce gas that may cause the stopper to burst, causing injuries.
- Fruit pulp and tea leaves: may become caught on the Seal Rubber and cause contents to spill.

Warning & Caution

Do not touch the Mouth Ring or the mouth of the Mug with the spout of a hot kettle.

The Mug may tilt over causing scalds.

After washing the Lid Set, shake a few times to release the water contained, and wipe it dry.

Otherwise the remaining water may drip out.

To avoid bags getting wet, always place the Mug in an upright position.

Do not attempt to put large ice cubes into the Mug. Crush ice into small pieces.

It may cause deformation or damage.

Clean the Lid, Seal Rubber, Mouth Ring and Mouth Ring Gasket after every use.

Not doing so may cause mold to build.

Do not drop or apply strong shocks to the product.

May cause plastic parts to break and dent the stainless steel exterior.

Do not scratch the printing on the Mug with hard elements.

It may come off.

Please close the Lid Set at upright position after finish drinking.

Do not close the Lid Set with a tea bag inside.

The tea bag may swell and cause leakage or may cause drinks to splash out.

Keeping hot tea warm for long hours may cause the color of the tea to change. For outdoor use, it is recommended to place hot water in the Mug, and to use a tea bag immediately before drinking for a fresher brew.

Cleaning

Always clean the Mug after use.

- For better usage, please remember to clean after every use.

The Exterior, Lid Set and the Mouth Ring Set

Wash with luke warm water and mild dishwashing liquid using a soft sponge. After rinsing, shake a few times and wipe it dry well.

- Remove the Seal Rubber from the Lid Set and the Mouth Ring Gasket from the Mouth Ring before washing.
- Please use a small brush sold in stores if necessary.

The Inside

Wash with luke warm water and mild dishwashing liquid using a soft sponge brush with handle. After rinsing, wipe it dry well.

- Always wash the inside thoroughly after each use to prevent odors from developing.

- Wipe off moisture thoroughly to prevent water stains or rusting of the product.
- Do not soak for an extended period of time.
- Do not use chlorine type bleach.
- Do not clean with thinner, benzene, abrasive cleaners or other harsh cleaners.
- Do not use a dishwasher or dish-dryer. Do not boil to sanitize.

To Remove Rust Spots and Water Stains:

You may find rust spots or water stains caused by impurities in the water. To remove these stains, fill the Mug with hot water with 10% vinegar and let stand for 30 minutes. Rinse and wash with a soft sponge brush with handle.

To Remove Coffee and Tea Stains:

To remove coffee and tea stains from the interior, the Lid Set and the Mouth Ring Set, we recommend using Zojirushi's cleaning detergent SB-ZA01E. Always remove the Lid Set when using SB-ZA01E. Contact Zojirushi Customer Service or your local dealer for further information.

SM-EAE (E/K/T/C) / B

How to Disassemble & Assemble the Parts

■ Lid Set

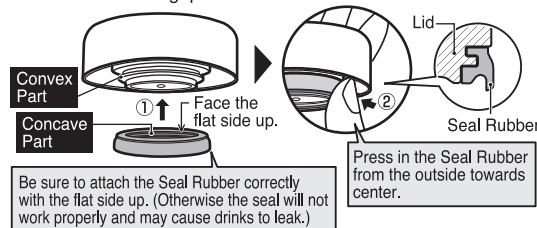
How to Disassemble

- ① Hold the Seal Rubber with your fingers and pull to remove.



How to Assemble

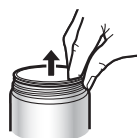
- ① Align the Concave Part of the Seal Rubber with Convex Part of the Lid and fit in by pressing the circumference of the Seal Rubber.
- ② Press in the Seal Rubber from the outside towards center so that there is no gap between it and the Lid.



■ Mouth Ring Set

How to Disassemble

- ① Remove the Mouth Ring Set as illustrated.



- ② Remove the Mouth Ring Gasket with a small tool such as a toothpick.



How to Assemble

- ① Attach the Mouth Ring Gasket with the Convex Part facing out.



- ② Press in the Mouth Ring Set while turning it slightly to fit securely.



Replacing the Seal Rubber and the Mouth Ring Set

The Seal Rubber and the Mouth Ring Set may need to be replaced due to time and wear. Please check it about once a year. For optimum performance, please replace them if the surface of the plastic becomes rough or damaged. Replacement parts may be available for an additional charge.