



Household Use Only

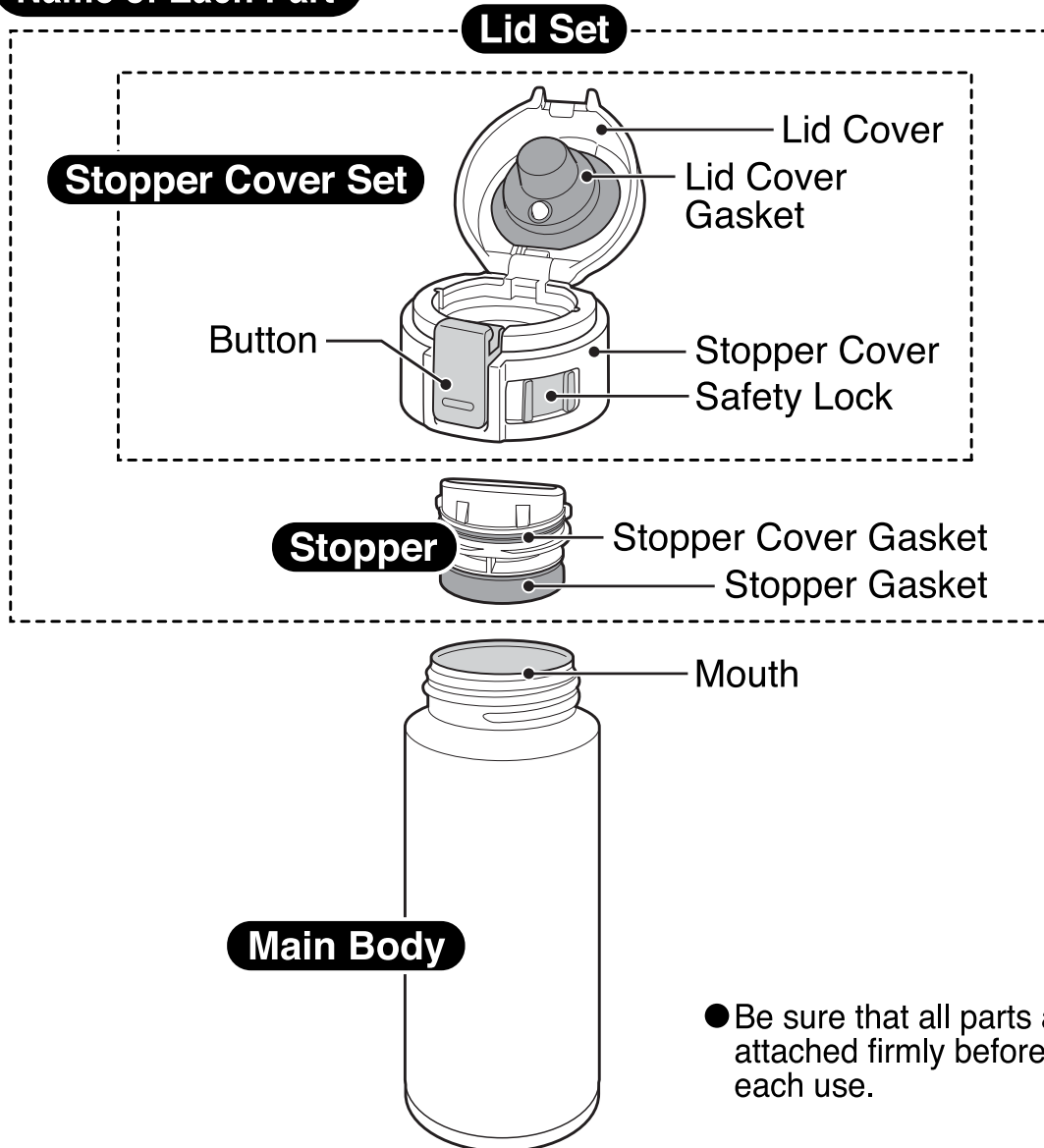
STAINLESS MUG

Model **SM-KHE/SM-KHF**

INSTRUCTION MANUAL

Thank you for your purchase of this quality Zojirushi product. We are confident that it will give you top performance and optimum satisfaction for many years. To ensure this, please read and follow the important guidelines below.

Name of Each Part



- Be sure that all parts are attached firmly before each use.

This Mug is for holding beverages and keeping them hot or cold. Please do not use for other than intended purposes.

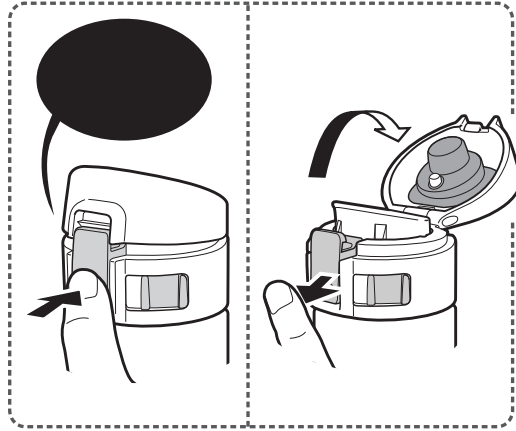
SM-KHE/SM-KHF (E/F) / G

How to Use:

5 Open the Lid Cover.

Push the Button and release to open the Lid Cover.

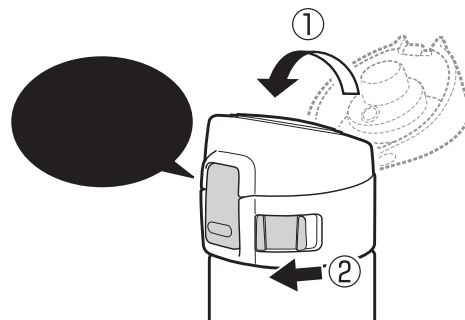
- If the Lid Cover does not open after releasing the Button, c



6 Drink the beverage.

- Do not tilt the Mug suddenly when drinking. (The beverage may spill and cause scalding or stain clothes.)

7 Close the Lid Cover and lock.



- Store the Mug upright when carrying inside bags to prevent beverages from spilling.



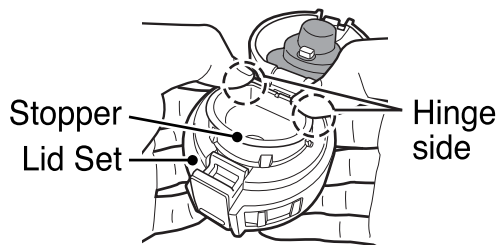
How to Disassemble & Assemble the Lid Set:

Be sure to attach the Stopper, Stopper Cover Set, Stopper Gasket, Stopper Cover Gasket and Lid Cover Gasket correctly to prevent malfunction or leaking of beverages.

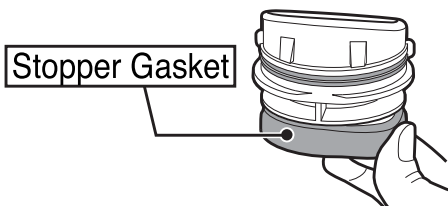
How to Disassemble:

1 Remove the Lid Set from the Main Body.

2 Remove the Stopper.
With the Lid Cover open, hold the Lid Set and press on the Hinge side of the Stopper to remove.

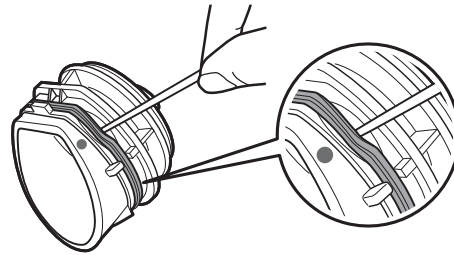


3 Remove the Stopper Gasket.



4 Remove the Stopper Cover Gasket.

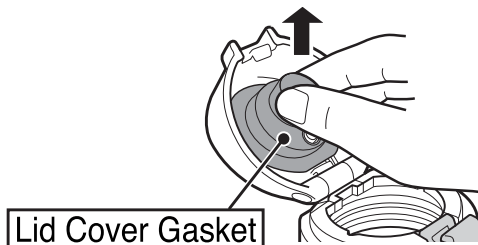
Remove the Stopper Cover Gasket by inserting a small tool such as a toothpick into the small opening near the "●" mark.



● Be careful not to damage the gasket.

5 Remove the Lid Cover Gasket.

Pinch the edge of the Lid Cover Gasket as illustrated and pull it toward you to remove.

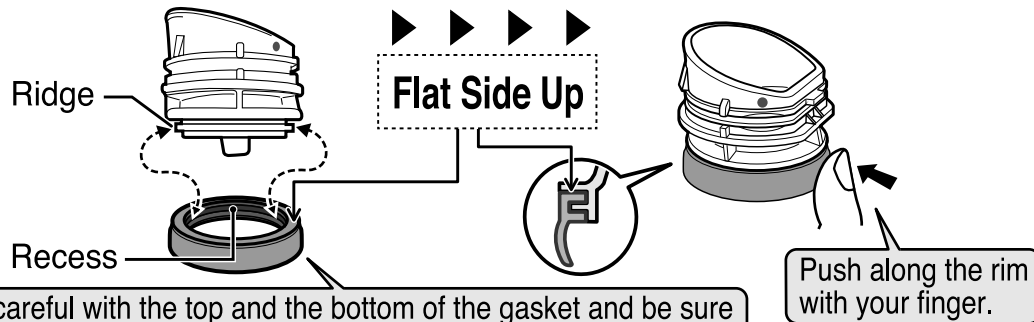


How to Disassemble & Assemble the Lid Set:

How to Assemble:

1 Attach the Stopper Gasket.

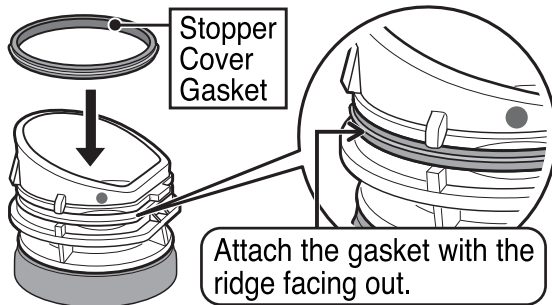
Line up the recess in the Stopper Gasket with the ridge on the Stopper, and, applying pressure from the outside in, push it into place.



Be careful with the top and the bottom of the gasket and be sure to set correctly. Not doing so may cause beverages to leak.

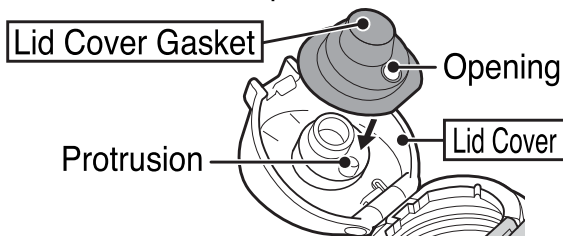
2 Attach the Stopper Cover Gasket.

Attach the Stopper Cover Gasket with the ridge facing out.



3 Attach the Lid Cover Gasket.

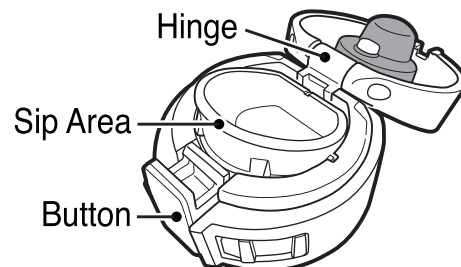
Align the opening on the Lid Cover Gasket with the protrusion on the Lid Cover and press to attach.



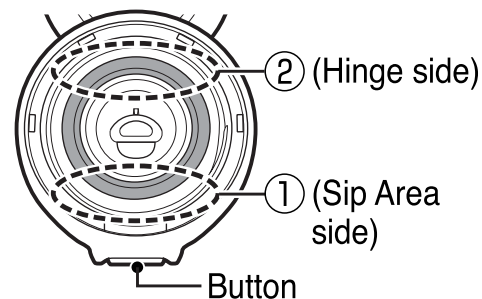
● Be sure to set the Lid Cover Gasket before use.

4 Attach the Stopper.

- (1) Push up the Sip Area side of the Stopper ①.
- (2) Push up the Hinge side of the Stopper ② and push it in to attach the Stopper securely.



Underside View of the Lid Set



How to Take Care of Your Mug:

- Always clean all parts thoroughly after each use.
- When cleaning the Lid Set, be sure to disassemble them into parts (see pg.7).

Exterior and Lid Set

Wash with warm water and mild dishwashing liquid using a soft sponge. Rinse, shake a few times and wipe dry.

- Disassemble the Stopper Gasket, Lid Cover Gasket and Stopper Cover Gasket before washing.
- Use a small brush sold in stores if necessary.

Interior

Wash with warm water and mild dishwashing liquid using a soft sponge with handle, rinse and dry.

- Keeping the inside clean will help prevent odors.

- Do not clean using paint thinner, metal wire scrub brushes, scrubbing brushes that include abrasive cleaners, polishing powders, cleansers, melamine sponges, or any similar items.
- Do not use chlorine type bleach.
- Do not use a dishwasher or dish-dryer. Do not boil to sanitize.
- Do not soak in water for an extended period of time.
- Wipe moisture off thoroughly to prevent water stains or rusting.
- If the product is not going to be used for an extended period, wash thoroughly with cold or lukewarm water and dry well. Store the product away from high temperatures and humidity.

To Remove Rust Spots and Water Stains:

You may find rust spots or water stains caused by impurities in the water. To remove these stains, fill the Main Body with hot water with 10% vinegar and let it stand for 30 minutes to an hour without attaching the Lid Set, then wash the interior thoroughly.

To Remove Coffee and Tea Stains:

To remove coffee and tea stains from the interior and the Lid Set, we recommend using Zojirushi's cleaning detergent SB-ZA01E. Always remove the Lid Set when using SB-ZA01E. Contact Zojirushi Customer Service or your local dealer for further information.

Replacement Parts:

We take care in only using materials that are safe and hygienic for food contact. However, if plastic parts become damaged or its surface becomes rough, please replace them for optimum performance. The Stopper and Gaskets may need to be replaced due to time and wear. Please check them about once a year. When replacing parts, please record the model number and part name beforehand. Then contact either the store where you purchased the product or Zojirushi Customer Service. Replacement parts may be available for an additional charge.