

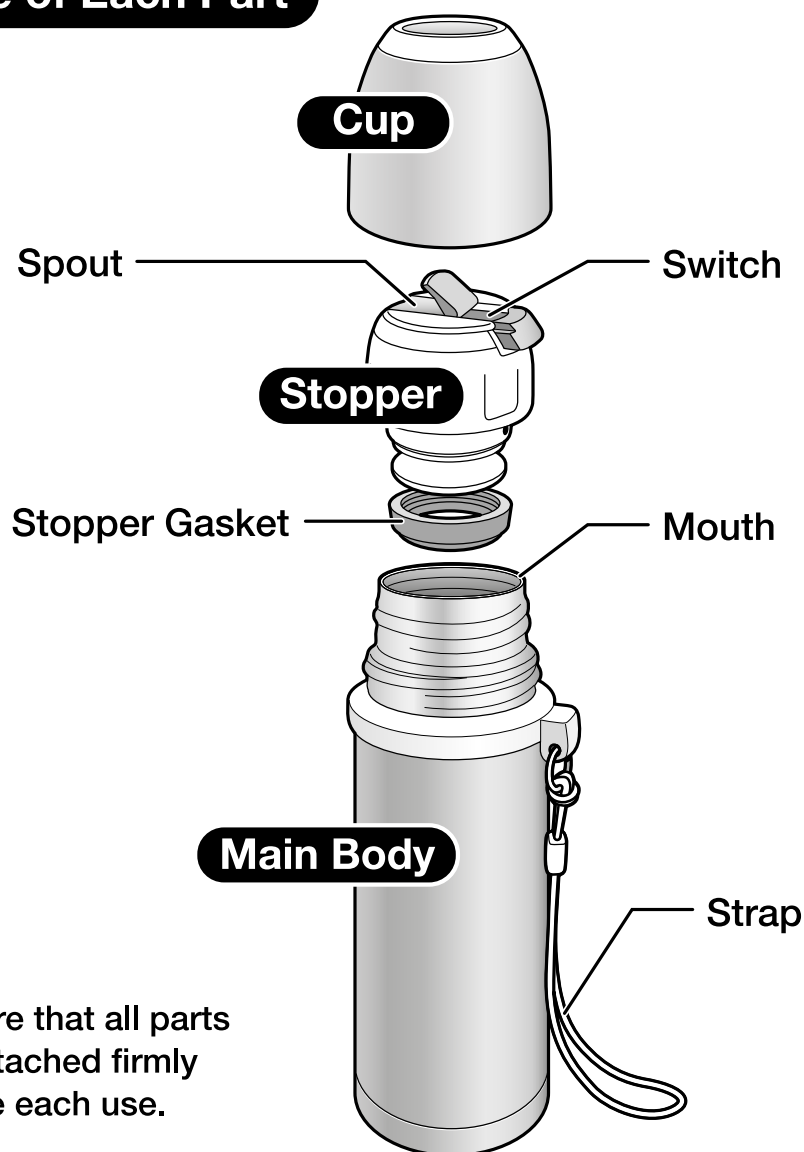


**HOUSEHOLD USE ONLY**

Instruction Manual

**STAINLESS STEEL VACUUM BOTTLE Model No. SS-PCE**

**Name of Each Part**



- Be sure that all parts are attached firmly before each use.


- The illustrations used in this instruction manual may vary from the actual product you have purchased.

Please read these instructions before use, and keep them for future reference.

SS-PCE(E/K/T/C) / A

# Important Safeguards:

- Please follow these instructions to prevent scalding, deterioration or discoloration of beverages, and malfunction or staining of the product.

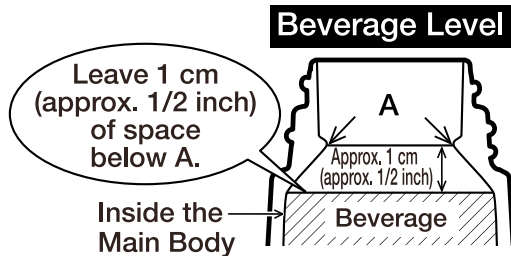
|   |  |
|---|--|
| <p><b>Keep the product out of the reach of infants and small children. Do not allow them to play with the product.</b><br/>Mishandling may cause injury or scalding.</p>  | <p><b>When containing hot beverages:</b></p> <ul style="list-style-type: none"> <li>● <b>Tilt the product slowly when pouring hot beverages.</b><br/>Pouring too quickly may cause scalding.</li> <li>● <b>Do not shake the bottle.</b><br/>Doing so may cause scalding or injuries.</li> <li>● <b>Be careful not to scald yourself when drinking hot beverages.</b><br/>Due to its vacuum insulation, the outside of the bottle will not become hot, while hot beverages will remain very hot for many hours. Please drink with caution.</li> <li>● <b>Always use the Cup when drinking hot beverages. Never drink directly out of the bottle.</b><br/>Doing so may cause scalding.</li> <li>● <b>The Stopper may become difficult to remove when pressure builds up inside the bottle. If this happens, pull out the Switch to release the pressure before removing the Stopper.</b><br/>Do not forcefully remove the Stopper. It may pop out and cause scalding or injuries.</li> </ul> |
| <p><b>Do not swing the bottle by the Strap.</b><br/>Doing so may cause injury or damage.</p>  |  |
| <p><b>Do not carry the bottle by the Cup or Stopper.</b><br/>Dropping the bottle is dangerous.</p>  |  |
| <p><b>Always close the Stopper tightly to prevent beverages from spilling, and make sure to close the Spout by pushing in the Switch after pouring.</b><br/>Hot beverages may leak and cause scalding.</p>  |  |
| <p><b>Always make sure the Stopper Gasket is attached.</b><br/>Contents may leak and cause scalding or stains.</p>  |  |
| <p><b>Please avoid filling the bottle with the following:</b></p> <ul style="list-style-type: none"> <li>● <b>Dry ice and carbonated drinks:</b><br/>Pressure may build up inside the bottle and cause contents to spill out, the Spout to become difficult to open, or the Stopper or Cup to burst, resulting in injuries.</li> <li>● <b>Dairy products and fruit juice:</b><br/>If left inside for a long period of time, contents may spoil and produce gas. This gas can cause pressure to build up inside the bottle, and as a result the Stopper may burst, beverages may spill, or the Stopper or Cup may be damaged.</li> <li>● <b>Liquids containing salt such as soup:</b><br/>Although the liner is made of 18/8 stainless steel and is nonstick-coated, salt may cause rust, resulting in loss of thermal insulation.</li> <li>● <b>Fruit pulp and tea leaves:</b><br/>These may become caught in the Stopper and cause contents to spill.</li> </ul> | <p><b>Do not use the bottle if it loses its heat retention properties.</b><br/>The outside of the Main Body may become very hot if hot beverages are poured inside.</p>  |
|   | <p><b>Do not remove the sticker on the bottom of the Main Body.</b><br/>Doing so may cause malfunctions such as rusting or pinholes.</p> <div data-bbox="1153 1186 1380 1333">  <p>Sticker</p> </div>   |
|   | <p><b>Always clean thoroughly after use.</b><br/>Failing to do so may cause malfunctions such as rusting or pinholes, or cause contents to spoil.</p>  |
| <p><b>Do not pull out the Switch with the bottle close to your face or tilted toward you.</b><br/>Hot beverages may spew out and cause scalding.</p>  | <p><b>Do not heat in a microwave.</b><br/>Doing so may cause sparks, or deformation or discoloration of the bottle.</p>  |
|   | <p><b>Do not drink out of the bottle while driving.</b><br/>Doing so may cause scalding, or stain the interior of the car or your clothes. In addition, attempting to use while driving may distract the driver and lead to serious accidents.</p>   |
| <p><b>Do not place near open flames (from gas stoves, etc.), or on top of electric heaters, IH hot plates, or other IH cooking devices.</b><br/>Doing so may cause a fire or malfunction.</p>   |  |

## Important Safeguards: continued

- Please follow these instructions to prevent scalding, deterioration or discoloration of beverages, and malfunction or staining of the product.

### Leave 1 cm (1/2 inch) of space on top when filling the Main Body.

Otherwise, contents may overflow when you attach the Stopper, or the Spout may become difficult to open. Beverages may also become caught in the Stopper and leak out later. If you overfill the Main Body, pour out some of the beverage before you reattach the Stopper.



### Consume beverages within the same day to prevent them from spoiling.

Beverages left inside for a long period of time may spoil and produce gas. If this gas causes pressure to build up inside the bottle, the Stopper may burst, beverages may spill, or the Stopper or Cup may be damaged.

### When filling the bottle with sports drinks:

- Rinse the inside and outside of the Main Body (Mouth), the Stopper, and the Cup as soon as possible after consumption to prevent rust and/or pinholes.
- Clean the inside using a soft sponge to avoid scratching the nonstick coating. Scratches to the coating may cause rust and pinholes.

### Do not modify or disassemble the product.

Doing so may cause accidents or damage the product.

### Do not place near heat sources such as gas stoves, ovens, or heaters.

Doing so may cause deformation or discoloration.

### Do not use for other than the intended purposes.

This bottle is for holding beverages and keeping them hot or cold.

## Warnings and Cautions:

### Avoid dropping or hitting the bottle against hard surfaces.

Damage to the plastic or stainless steel surface of the bottle may reduce its ability to retain heat.

### Condensation may form on the inside of the Cup when keeping warm hot beverages.

### Do not attach parts other than those designed specifically for this product.

Doing so may cause leaks or breakage.

### After washing, shake the Stopper several times to remove any water left inside, and wipe dry.

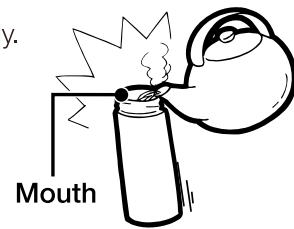
Water left inside may leak out.

### Do not rub or scratch the design on the outside of the Main Body.

Doing so may cause the design to come off.

### Do not allow hot kettles to touch the Mouth of the Main Body.

The Main Body may tip over and cause scalding. It may also damage the Main Body.



### Crush large ice cubes beforehand. Do not force them into the Main Body.

Forcing or hitting the ice cubes may cause deformation or malfunction.

### Always clean the Stopper and Stopper Gasket thoroughly after use.

Not doing so may result in decay, mold, odor, or discoloration as well as leakage.

## Warnings and Cautions: continued

Hot tea may discolor if stored for a long period of time. We recommend using tea bags to brew tea right before consuming.

**Do not close the Stopper with a tea bag left inside.**

The tea bag may swell and cause contents to leak or splatter.

The rattling noise that may be heard when the product is shaken comes from copper or aluminum foil in the vacuum insulation intended to increase heat (cold) retention, and does not indicate a malfunction.

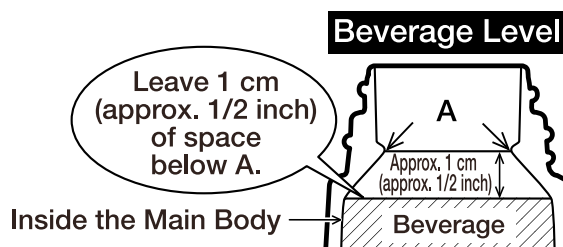
## How to Use:

- Before use, wash the Cup, Stopper, and inside and outside of the Main Body thoroughly according to the instructions for care.
- When you first use the product, there may be a plastic smell. However, this will become less noticeable with use.

**1 Remove the Cup and Stopper from the Main Body.**

**2 Fill the Main Body with beverage and reattach the Stopper. If the Main Body is too full when you attach the Stopper, the Switch may get stuck.**

If the Main Body is overfilled when attaching the Stopper, the Switch may become stuck. If it becomes stuck, do not force it. Instead, remove the Stopper and pour out some of the beverage. Then, reattach the Stopper.



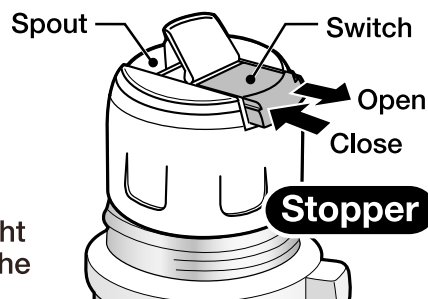
For better heat retention, preheat or precool the Main Body with a small amount of hot water (cold water) for about one minute, and then fill it with your beverage.

- Make sure that the Stopper Gasket is attached correctly before use. (If not attached correctly, the beverage may leak. See “How to Attach the Stopper Gasket” on p. 7.)
- Attach the Stopper securely.
- Close the Spout completely.
- Turn the bottle upside down to make sure contents do not leak.
- If there is leakage, pour out a small amount of the beverage and shake out any beverage inside the Stopper. Then, reattach the Stopper.

## How to Use: continued

### 3 Pour the beverage.

- ① With the bottle upright, open the Spout by pulling out the Switch on the Stopper in the direction of the arrow.
- ② Tilt the bottle and pour the beverage out from the Spout.
- ③ After pouring, return the bottle to an upright position and close the Spout by pushing the Switch in the direction of the arrow.



- **Tilt the bottle slowly when pouring hot beverages.**  
Otherwise, the beverage may spurt out and cause scalding.

- After pouring, stand the Bottle upright and close the Spout. Closing the Spout while the Bottle is tilted may cause beverages to become caught in the Stopper and leak out later. Some droplets of beverages may remain inside the Cup. To avoid staining your clothes or surroundings caused by leaks of beverages, please follow these precautions.

- After pouring beverages, leave the bottle in an upright position for 2-3 seconds before closing the Spout.
- Shake the Cup to remove any droplets, and then wipe it dry.
- Store the bottle upright when carrying it inside a bag to prevent beverages from spilling.



## How to Take Care of Your Bottle:

- Clean the product after each use to prevent odors and mold, and to keep the product sanitary.

|  |  |
|--|--|
| <b>Outside Main Body<br/>Cup<br/>Stopper</b> | <ol style="list-style-type: none"><li>① Remove the Strap.</li><li>② Wash with warm water and mild dishwashing liquid using a soft sponge.</li><li>③ Rinse, shake a few times, and wipe dry.<ul style="list-style-type: none"><li>● Use a small brush sold in stores if necessary to wash hard-to-reach areas.</li></ul></li></ol>  |
| <b>Inside Main Body</b>                      | <ol style="list-style-type: none"><li>① Fill the Main Body with warm water, close the Stopper, and pour the warm water out through the Spout several times.</li><li>② Remove the Stopper and wash with warm water and mild dishwashing liquid, using a soft sponge with a handle.</li><li>③ Then, rinse and wipe dry.<ul style="list-style-type: none"><li>● Keeping the inside clean will help prevent odors and keep the product sanitary.</li></ul></li></ol> |
| <b>Strap</b>                                 | Soak a soft cloth in warm water and dishwashing soap, and wipe away any dirt.  |

## How to Take Care of Your Bottle: continued

### When Cleaning Your Product:

#### To protect the paint, print, and stickers on the outside of the Main Body:

- Do not use a dishwasher or dish-dryer. Do not boil to sanitize.
  - Do not use bleach on the outside of the Main Body.
  - Do not clean using paint thinner, benzene, metal wire scrub brushes, scrubbing brushes that include abrasive cleaners, polishing powders, cleansers, melamine sponges, or any similar items.
  - Do not use chlorine bleach.
  - Do not soak in water for an extended period of time.
  - Wipe moisture off thoroughly to prevent water stains or rusting.
  - If the product is not going to be used for an extended period of time, wash thoroughly with cold or lukewarm water and dry well. Store the product away from high temperatures and humidity.
- High temperatures and humidity may damage the product.

### To Remove Rust Spots and Water Stains:

You may find rust spots or water stains on the inside of the Main Body caused by impurities in the water. To remove these stains, fill the Main Body with a mixture of hot water and 10% vinegar, and let it stand for 30 minutes to an hour without attaching the Stopper. Then, wash the interior thoroughly. (See “How to Take Care of Your Bottle” on p. 5-8.)

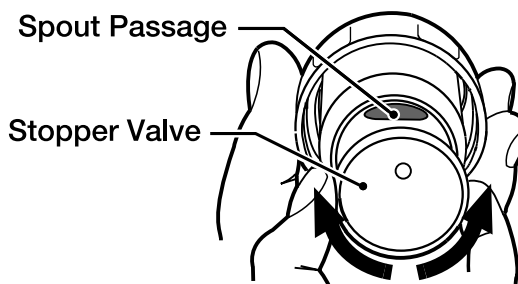
### To Remove Coffee or Tea Stains

To remove coffee or tea stains from the interior and the Stopper, we recommend using Zojirushi's stainless steel bottle cleaning detergent **SB-ZA01/SB-ZA01E** (sold separately).

- Always remove the Stopper when using SB-ZA01/SB-ZA01E.

### ■ Cleaning the Stopper

- 1 Pull the Stopper Valve down while turning it about 180 degrees to hold it in the open position. (Turn it another 180 degrees to return it to its original position.)



Pull down and turn about 180 degrees.

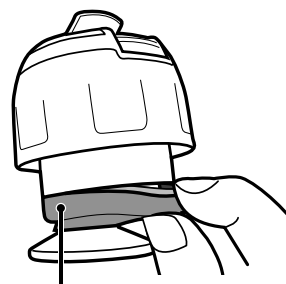


## How to Take Care of Your Bottle: continued

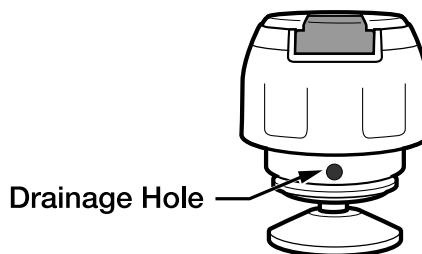
**2** Remove the Stopper Gasket.

**3** Soak a soft sponge in warm water and mild dishwashing liquid and wash both the Stopper and Stopper Gasket, then dry them both.

**4** If there is water remaining inside the Stopper, pour it out of the Drainage Hole. Shake the Stopper a few times and then wipe it dry. (If water is left inside the Stopper, it may leak out later and stain your clothes or bag.)



Stopper Gasket

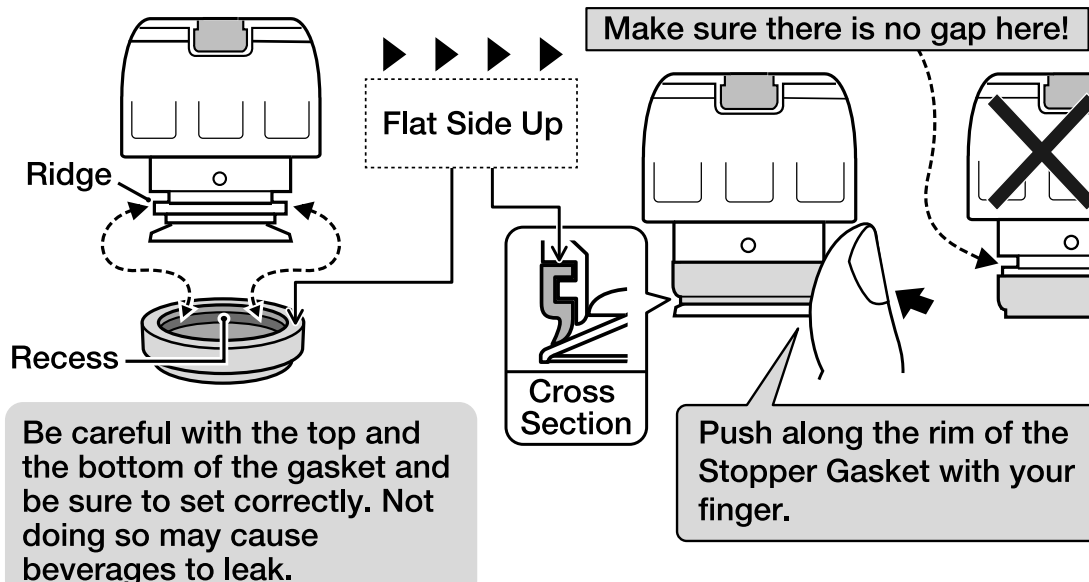


Drainage Hole

### ■ How to Attach the Stopper Gasket:

- Do not disassemble the Stopper.
- After cleaning, be sure to attach the Stopper Gasket correctly to prevent beverages from leaking and the product from malfunctioning.

Line up the recess in the Stopper Gasket with the ridge on the Stopper, and fit onto the Stopper while pushing along the rim with your finger.



## How to Take Care of Your Bottle: continued

### Replacement Parts:

We take care in only using materials that are safe and hygienic for food contact. However, if plastic parts become damaged or their surfaces become rough, please replace them for optimum performance. The Stopper and Stopper Gasket may need to be replaced due to time and wear. Please check them about once a year. When replacing parts, please record the model number and part name beforehand. Then, contact either the store where you purchased the product, or Zojirushi Customer Service. Replacement parts may be available for an additional charge.

## SPECIFICATIONS:

### Product: STAINLESS STEEL VACUUM BOTTLE

| Model No. | Capacity              | Weight             | Heat Retention<br>(Above) | Cold Retention<br>(Below) |
|-----------|-----------------------|--------------------|---------------------------|---------------------------|
| SS-PCE20  | 0.2 liter<br>(7 oz.)  | 0.17 kg<br>(6 oz.) | 71°C (160°F)<br>@ 6 hrs.  | 9°C (48°F)<br>@ 6 hrs.    |
| SS-PCE25  | 0.25 liter<br>(8 oz.) | 0.18 kg<br>(7 oz.) | 74°C (165°F)<br>@ 6 hrs.  | 8°C (46°F)<br>@ 6 hrs.    |

#### ■ Heat/Cold Retention Testing Conditions:

At a room temperature of 20°C±2°C (68°F±4°F), the Main Body is filled with hot or cold water up to the level illustrated in **Beverage Level** on p. 3, and left standing in an upright position.

For heat retention, the temperature is measured 6 hours after the hot water reaches 95°C±1°C (203°F±2°F).

For cold retention, the temperature is measured 6 hours after the cold water reaches 4°C±1°C (39°F±2°F).

|            |             |  |
|------------|-------------|--|
| Materials: | Inner Liner | Stainless Steel (Nonstick coated)      |
|            | Exterior    | Stainless Steel (Acrylic resin coated) |
|            | Mouth       | Stainless Steel                        |
|            | Cup         | Polypropylene                          |
|            | Stopper     | Polypropylene                          |
|            | Gasket      | Silicone                               |

Manufacturer: Zojirushi Corporation

Address: 1-20-5 Tenma, Kita-ku, Osaka 530-8511, Japan