

Thank you for your purchase of this quality Zojirushi product. We are confident that it will give you top performance and optimum satisfaction for many years. To ensure this, please read and follow the important guidelines below.

Important Safeguards:

- This mug is for holding beverages and keeping them hot or cold. Please do not use for other than intended purposes.

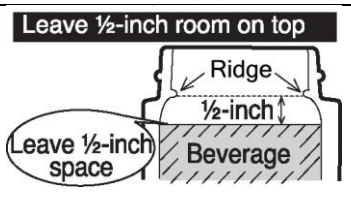
• Please follow these instructions to prevent scalding, deterioration and discoloration of beverages, as well as malfunction and staining of the product.

Keep out of reach of infants and small children.

Consume beverages within the same day to prevent from spoiling.

Due to its vacuum insulation, the outside of the mug will not become hot, while hot beverages will remain very hot for many hours. Please use caution when drinking.

Leave ½-inch room on top when filling the mug. Contents may overflow when placing the stopper set.



Do not drink out of the mug while driving.

Do not heat in a microwave.

Always make sure the stopper gasket is on.

Always clean thoroughly after use.

Do not use the mug if it loses its heat retention properties. The outside of the mug may become very hot if hot beverages are poured inside.

(SM-D models only) Do not open the lid with the mug close to your face or tilted toward you. Pressure built up in the mug may cause hot beverages to spew out.

Always close the stopper set tightly to prevent beverages from spilling.

Keep away from heat sources such as gas stoves, ovens and heaters.

Do not remove the sticker on the bottom of the mug.

Do not disassemble the mug.

When using a vehicle cup holder accessory:

1. Always keep the Lid Set securely closed when not drinking.
2. Make sure the mug fits into the holder securely before placing it in.
3. Check that the strength of the cup holder is sufficient to hold the mug before using.
4. Do not use a hanging-type cup holder that attaches to the window or air vent.

The mug may not fit in some cup holders.

When filling the mug with sports drinks:

- Rinse the inside of the mug as soon as possible after consumption to prevent rust and/or pinholes.
- Clean the inside using a soft sponge to protect the nonstick coating from being scratched.

Always make sure to use with the lid cover attached.

Do not tilt the mug suddenly when drinking.

Do not shake the mug when containing hot beverages.

Please avoid filling the mug with the following:

- Dry ice and carbonated drinks: contents may spill out or the pressure may cause the stopper to burst, causing injuries.
- Liquids containing salt such as soup: although the liner is made of 18/8 stainless steel and is nonstick coated, salt may cause rust resulting in loss of thermal insulation.
- Dairy products and fruit juice: if left inside for a long period of time, contents may spoil and produce gas that may cause the stopper to burst, causing injuries.
- Fruit pulp and tea leaves: may become caught in the stopper and cause contents to spill.

Warnings and Cautions:

Do not allow hot kettles to touch the mouth of the mug. Doing so may damage the mug.



Do not leave a tea bag inside and close the stopper set.

Do not rub the design on the outside of the mug strongly.

Do not force large ice cubes in.

Avoid dropping or hitting against hard surfaces. Damage to the plastic or stainless steel surface of the mug may reduce its ability to retain heat.

Make sure there is no water left inside the stopper set after cleaning.

Store the mug upright when carrying inside bags to prevent beverages from spilling.

The rattling noise that may be heard when the product is shaken comes from the copper or aluminum foil in the vacuum insulation to increase heat or cold retention and does not indicate a malfunction.

Attach the stopper properly and turn the mug upside down to make sure contents do not leak.

When closing the stopper, stand the mug at an upright position, then close the stopper securely.

Always clean the stopper and gaskets thoroughly after use.

Hot tea may discolor if stored for a long period of time. We recommend the use of tea bags and brewing right before consumption.

•The illustrations used in this instruction manual may vary from the actual product you have purchased.

How to Take Care of Your Mug:

- Do not soak in water.

<p>Outside Main Body / Stopper Set</p>	<p>Wash with warm water and mild dishwashing liquid using a soft sponge, rinse and dry.</p> <ul style="list-style-type: none"> • Use a small brush sold in stores if necessary. • Detach and wash gaskets after each use, and remember to attach them. • Disassemble the stopper set (if applicable) before washing. • Always dry thoroughly after washing.
<p>Inside Main Body</p>	<p>Remove the stopper set, wash with warm water and mild dishwashing liquid using a soft sponge with handle, rinse and dry. Keeping the inside clean will help prevent odors.</p>
<ul style="list-style-type: none"> • Do not use a dishwasher or dish-dryer. Do not boil to sanitize. • Do not clean with thinner, benzene, abrasive cleaners or other harsh cleaners. 	<ul style="list-style-type: none"> • Do not use chlorine type bleach. • Do not soak.

To Remove Rust Spots and Water Stains:

You may find rust spots or water stains caused by impurities in the water. To remove these stains, fill the mug with hot water with 10% vinegar and let stand for 30 minutes to an hour without attaching the stopper, then wash the interior thoroughly.

To Remove Coffee and Tea Stains:

To remove coffee and tea stains from the interior or the stopper, we recommend using Zojirushi's cleaning detergent SB-ZA01E. Always remove the stopper when using SB-ZA01E. Contact Zojirushi Customer Service or your local dealer for further information.

Replacement Parts:

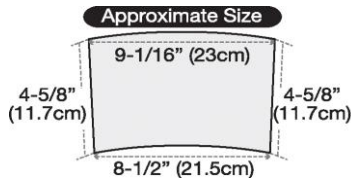
We take care in only using materials that are safe and hygienic for food contact. However, if plastic parts become damaged or its surface becomes rough, please replace them for optimum performance. The stopper and gaskets may need to be replaced due to time and wear. Please check them about once a year. When replacing parts, please record the model number and part name beforehand. Then contact either the store where you purchased the product or Zojirushi Customer Service. Replacement parts may be available for an additional charge.

Some of the information below may not apply to your mug. Please review them if applicable.

Personalize Your Wrap:

You can decorate your mug with your own pictures and designs. Just cut the paper to the same size and shape as the wrap that came with your mug, and replace it.

- Remove the clear cover to replace the wrap.
- Please see the illustration below for the approximate size and shape of the wrap.



- Please make copies of irreplaceable photos and materials and use the copy to prevent damage.
- Depending on the type of paper and ink used, the color may rub off onto the inside of the clear cover.

Download or Print from D-mug Studio

Go to www.zojirushi.com and then to the D-mug Studio to download or create your personalized wrap. Please see the website for details. *Contents of the website may change without notice.

How to Remove the Clear Cover:

1. Remove the clear cover stopper by turning counterclockwise.



2. Hold the main body and pull the clear cover down.



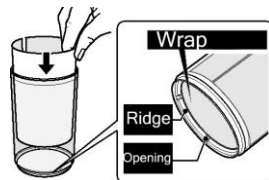
3. Remove the wrap from the clear cover.



How to Attach the Clear Cover:

1. Place the wrap inside the clear cover.

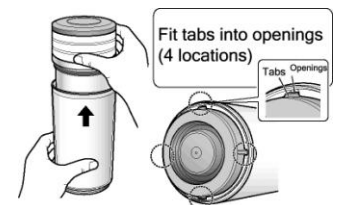
Insert the wrap from the top until it stops along the ridge at the bottom of the clear cover.



- Make sure not to insert the wrap upside down.
- Make sure that the wrap fits nicely along the inside of the clear cover, that it is not bent nor caught between the clear cover gasket or the clear cover.

2. Place the clear cover onto the main body.

Fit the tabs on the main body to the openings at the bottom inside of the clear cover. Make sure that the clear cover fits all the way.



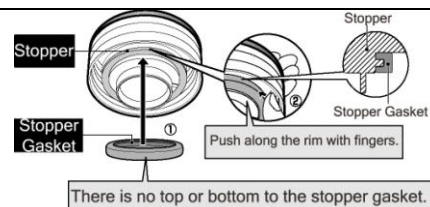
- Make sure the clear cover gasket is on the main body straight to prevent water from getting in between the clear cover and main body.
- Make sure the ridge of the clear cover gasket is facing out.

3. Close the clear cover stopper by turning clockwise.

How to Attach the Stopper Gasket:

1. Fit the stopper gasket to the stopper as illustrated. Make sure there is no space in between.

2. Make sure the gasket is fit all around. There is no top or bottom to the stopper gasket. Push along the rim with your finger.



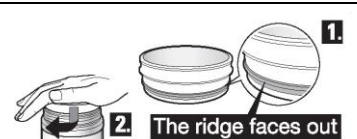
How to Disassemble the Mouth Ring Set:

1. Remove the mouth ring set from the main body.
2. Remove the mouth ring gasket with a small tool such as a toothpick.



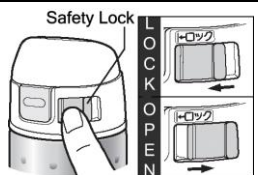
How to Assemble the Mouth Ring Set:

1. Fit the mouth ring gasket as illustrated.
2. Fit the mouth ring set to the main body tightly while turning slightly.



How to Unlock the Safety Lock:

With the mug standing upright, slide the safety lock to the right to unlock. The lid will not open if the safety lock is at the locked position.



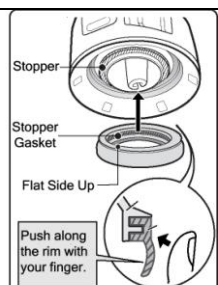
How to Open the Lid:

Push the open button to open the lid. Depressing the open button will release the latch. The lid will open further when the button is released. If the lid does not open further, make sure the safety lock is unlocked, and depress the open button further and then release. (Depending on the temperature difference between the inside and outside of the mug, the lid may not open smoothly.)



How to Attach the Stopper Gasket:

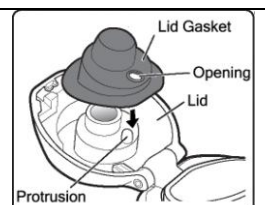
Fit the stopper gasket to the stopper as illustrated. Make sure there is no open space in between. Make sure not to place the stopper gasket upside down.



How to Attach the Lid Gasket:

Align the opening on the lid gasket with the protrusion on the lid to attach the lid gasket.

- Always make sure the lid gasket is attached before use.



For questions or comments, please contact:

Zojirushi America Corporation

Tel: (800) 733-6270 www.zojirushi.com